

UNITED STATES
DEPARTMENT OF THE INTERIOR
GEOLOGICAL SURVEY

APPLICATION FOR PERMIT TO DRILL, DEEPEN, OR PLUG BACK

1a. TYPE OF WORK

DRILL ☒DEEPEN ☐PLUG BACK ☐

b. TYPE OF WELL

OIL
WELL ☒GAS
WELL ☐

OTHER

SINGLE
ZONE ☒MULTIPLE
ZONE ☐

2. NAME OF OPERATOR

Houston Oil & Minerals Corporation

3. ADDRESS OF OPERATOR

Suite 504, 1700 Broadway, Denver, Colorado 80203

4. LOCATION OF WELL (Report location clearly and in accordance with any State requirements.)

At surface

990' FNL, 990' FEL, SEC 1, T15N, R4W

At proposed prod. zone

14. DISTANCE IN MILES AND DIRECTION FROM NEAREST TOWN OR POST OFFICE*

46 miles southwest of Cuba, N.M.

15. DISTANCE FROM PROPOSED*

LOCATION TO NEAREST
PROPERTY OR LEASE LINK, FT.
(Also to nearest drlg. unit line, if any)

990'

16. NO. OF ACRES IN LEASE

17. NO. OF ACRES ASSIGNED
TO THIS WELL

40

18. DISTANCE FROM PROPOSED LOCATION*
TO NEAREST WELL, DRILLING, COMPLETED,
OR APPLIED FOR, ON THIS LEASE, FT.

19. PROPOSED DEPTH

8000'

20. ROTARY OR CABLE TOOLS

Rotary

21. ELEVATIONS (Show whether DF, RT, GR, etc.)

6195' Ungraded Ground Elevation

22. APPROX. DATE WORK WILL START*

February 20, 1977

23.

PROPOSED CASING AND CEMENTING PROGRAM

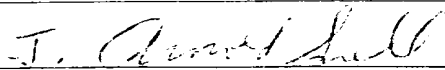
SIZE OF HOLE	SIZE OF CASING	WEIGHT PER FOOT	SETTING DEPTH	QUANTITY OF CEMENT
17 1/2"	13 3/8"	54.5#	150'	150 sacks
12 1/4"	9 5/8"	32.3#	1200'	300-400 sacks
8 3/4"	5 1/2"	15.5 & 17.0#	8000'	1000+ sacks

Operator proposes to drill to 8000' to test Pennsylvanian formation. A 13 3/8" Conductor string will be set at 150'± and cemented to surface. BOP's will be installed and tested and a 12 1/4" hole will be drilled with mud to 1200' where 9 5/8" Casing will be set and cemented. The BOP stack consisting of a Series 900 (3000 psi) double gate and a Series 900 Hydril plus the manifold will be tested before drilling 8 3/4" hole to approximately 8000'. A low solids-non dispersed mud will be used. Mud logging and sample analysis will be utilized from base of Conductor pipe to TD with Cores and DST's taken where necessary for evaluation. No abnormal pressures or temperatures are anticipated and the well should take less than 40 days to drill. The surface formation is Gallup. Other estimated formation tops are: Dakota 1100', Morrison 1150', Entrada 2025', Chinle 2250', San Andres 3700', and Pennsylvanian 5750'. The well is located on the Ignacio Chavez Land Grant.

IN ABOVE SPACE DESCRIBE PROPOSED PROGRAM: If proposal is to deepen or plug back, give data on present productive zone and proposed new productive zone. If proposal is to drill or deepen directionally, give pertinent data on subsurface locations and measured and true vertical depths. Give blowout preventer program, if any.

24.

SIGNED



TITLE

Area Manager

Minerals Management Inc

DATE February 9, 1977

(This space for Federal or State office use)

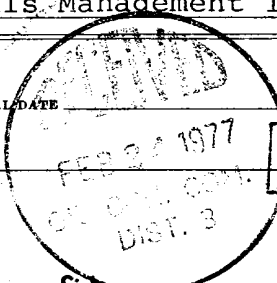
PERMIT NO.

APPROVAL DATE

APPROVED BY

TITLE

CONDITIONS OF APPROVAL, IF ANY:



RECEIVED

FEB 10 1977

*See Instructions On Reverse Side

U. S. GEOLOGICAL SURVEY
DURANGO, COLO.

**NEW MEXICO OIL CONSERVATION COMMISSION
WELL LOCATION AND ACREAGE DEDICATION PLAT**

Form C-102
Supersedes C-128
Effective 1-1-65

All distances must be from the outer boundaries of the Section.

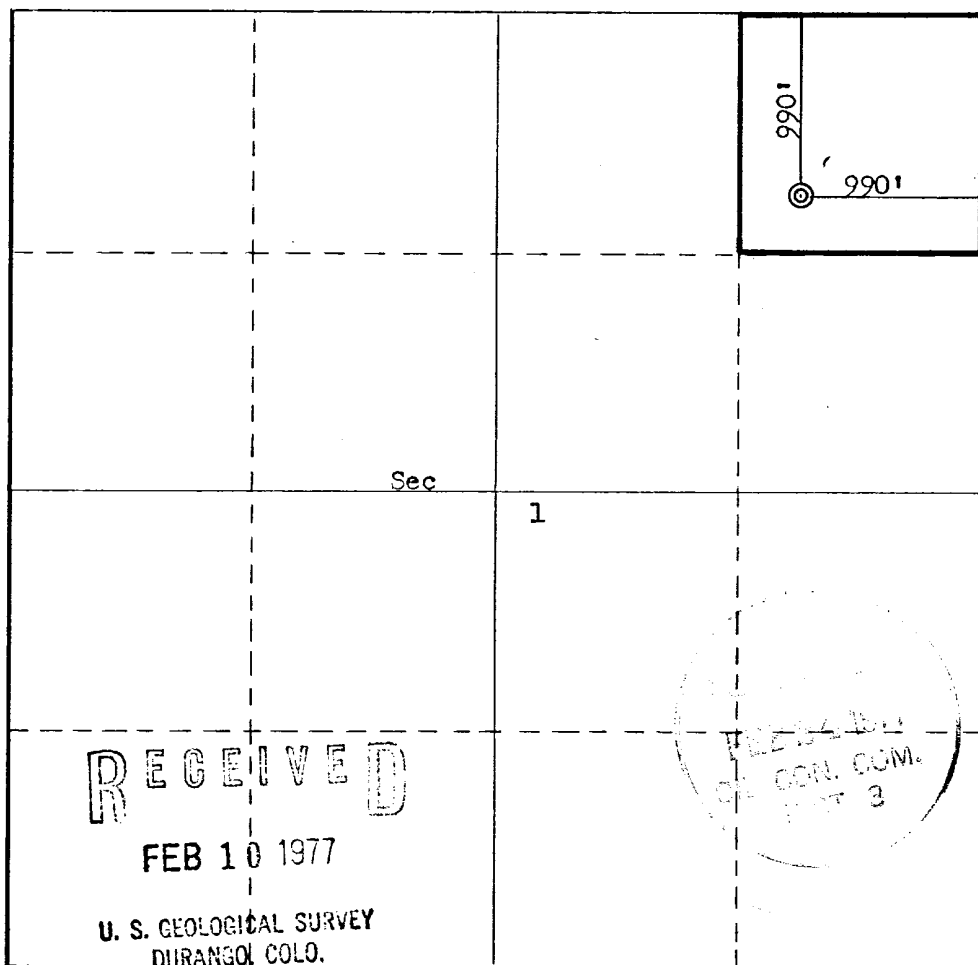
Operator Houston Oil & Minerals			Lease Booth-Drought		Well No. 2
Unit Letter A	Section 1	Township 15N	Range 4W	County Sandoval	
Actual Footage Location of Well:					
990 feet from the North line and		990 feet from the East line			
Ground Level Elev. 6195	Producing Formation Pennsylvanian	Pool Wildcat	Dedicated Acreage: 40 Acres		

1. Outline the acreage dedicated to the subject well by colored pencil or hachure marks on the plat below.
2. If more than one lease is dedicated to the well, outline each and identify the ownership thereof (both as to working interest and royalty).
3. If more than one lease of different ownership is dedicated to the well, have the interests of all owners been consolidated by communitization, unitization, force-pooling, etc?

☐ Yes ☐ No If answer is "yes," type of consolidation _____

If answer is "no," list the owners and tract descriptions which have actually been consolidated. (Use reverse side of this form if necessary.) _____

No allowable will be assigned to the well until all interests have been consolidated (by communitization, unitization, forced-pooling, or otherwise) or until a non-standard unit, eliminating such interests, has been approved by the Commission.



CERTIFICATION

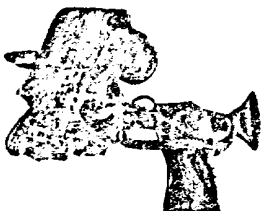
I hereby certify that the information contained herein is true and complete to the best of my knowledge and belief.

Name
Fred B. Kerr Jr.
Position
Area Manager
Company
Minerals Management Inc.
Date
February 9, 1977

I hereby certify that the well location shown on this plat was plotted from field notes of actual surveys made by me or under my supervision, and that the same is true and correct to the best of my knowledge and belief.

Date Surveyed
February 8, 1977
Registered Professional Engineer and/or Land Surveyor
Fred B. Kerr Jr.
Fred B. Kerr Jr.

Certificate No.
3950



MINERALS MANAGEMENT INCORPORATED
A Division of SCIENTIFIC SOFTWARE CORPORATION

DEVELOPMENT PLAN FOR SURFACE USE
HOUSTON OIL AND MINERALS CORPORATION

BOOTH DROUGHT WELL NO. 2

990' FNL and 990' FEL

SECTION 1, T15N, R4W

SANDOVAL COUNTY, NEW MEXICO

1. Existing Roads

See attached Cabazon Quadrangle map showing directions from New Mexico State Highway 44 to the well location. The road is good with only minor repairs required at several cattleguard approaches.

2. Planned Access Road

See attached topographic map. The proposed access road leaves the main road as shown in Section 31, T16N, R3W, proceeding along an existing trail approximately 1/2 mile to the well location. The trail will be improved and water bars will be installed where necessary for adequate drainage.

3. Location of Existing Wells

There are no other known wells within the immediate area.

4. Location of Production Facilities

All production facilities (tank batteries, flowlines, treatment equipment) are to be initially contained within the proposed location site.

RECEIVED

FEB 10 1977

U. S. GEOLOGICAL SURVEY

DURANGO, COLO.

5. Location & Type of Water Supply

Arrangements for water for drilling purposes will be made with the Bureau of Land Management to use water from a well located in Section 36, T16N, R4W.

6. Source of Construction Materials

All construction materials for this location and access road are to be borrowed materials accumulated during construction of the location site and access road. No additional construction material is anticipated at this time.

7. Methods of Handling Waste Disposal

All garbage and trash that can be burned shall be burned. All unburnable trash will be contained in a trash pit and covered with a minimum of 4' of cover. All production waste such as cuttings, chemicals, overflows of oil, water and drilling fluids, shall be contained in the reserve pit and on completion of drilling activities buried with a minimum of 4' of cover. The reserve pit will be fenced until cleanup operations are commenced. A portable toilet will be provided for human waste.

8. Ancillary Facilities

There are no ancillary facilities planned for this location.

9. Well Site Layout

See attached location layout plat. A 7'-8' cut will be required on the west edge of the location.

10. Plans for Restoration of the Surface

Cleanup of the well location will commence immediately following the removal of the drilling equipment. The reserve pit will be fenced until restoration operations are commenced. The well location will be returned to approximate natural contour and the access road will be returned to original contour if the well is not productive. Both the road and location will be restored and reseeded in accordance with BLM specifications. Full restoration activities will begin within 90 days after completion of the well and reseeded will be done at the time as directed by the BLM.

RECEIVED

FEB 10 1977

U. S. GEOLOGICAL SURVEY
DURANGO, COLO.

11. Other Information

Impact on the environment will be minimal. Although topography in the Area is fairly rugged, as shown on the attached topographic map, the location is readily accessible with the drillsite located on the side of a slightly sloping (6%) hill. Juniper trees are generally sparse and only a few will be removed at the wellsite. Vegetation is primarily sagebrush and grasses. The proposed wellsite is located on the Ignacio Chavez Grant.

12. Lessee's or Operator's Representative

Mr. Ron Scott
1700 Broadway, Suite 504
Denver, Colorado 80203
Business Phone: (303) 861-7942

13. Certification

I hereby certify that I, or persons under my direct supervision, have inspected the proposed drillsite and access route; that I am familiar with the conditions which presently exist; that the statements made in the plan are, to the best of my knowledge, true and correct; and that the work associated with the operations proposed herein will be performed by Houston Oil and Minerals Corp. and its contractors and subcontractors in conformity with this plan and terms and conditions with this plan and the terms and conditions under which it is approved.

2-9-77
Date

J. Arnold Snell
J. Arnold Snell
Area Manager
Minerals Management Inc.

S

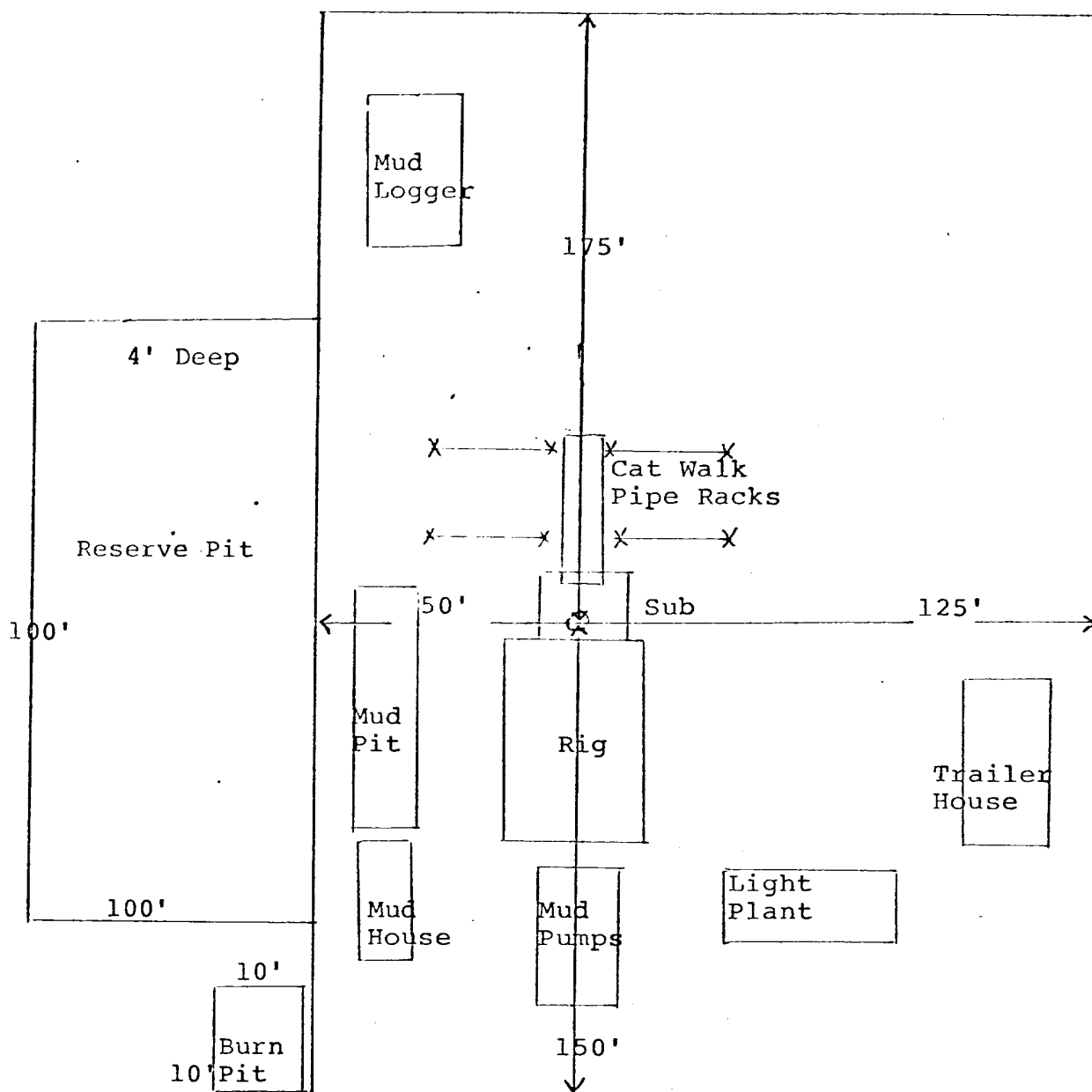
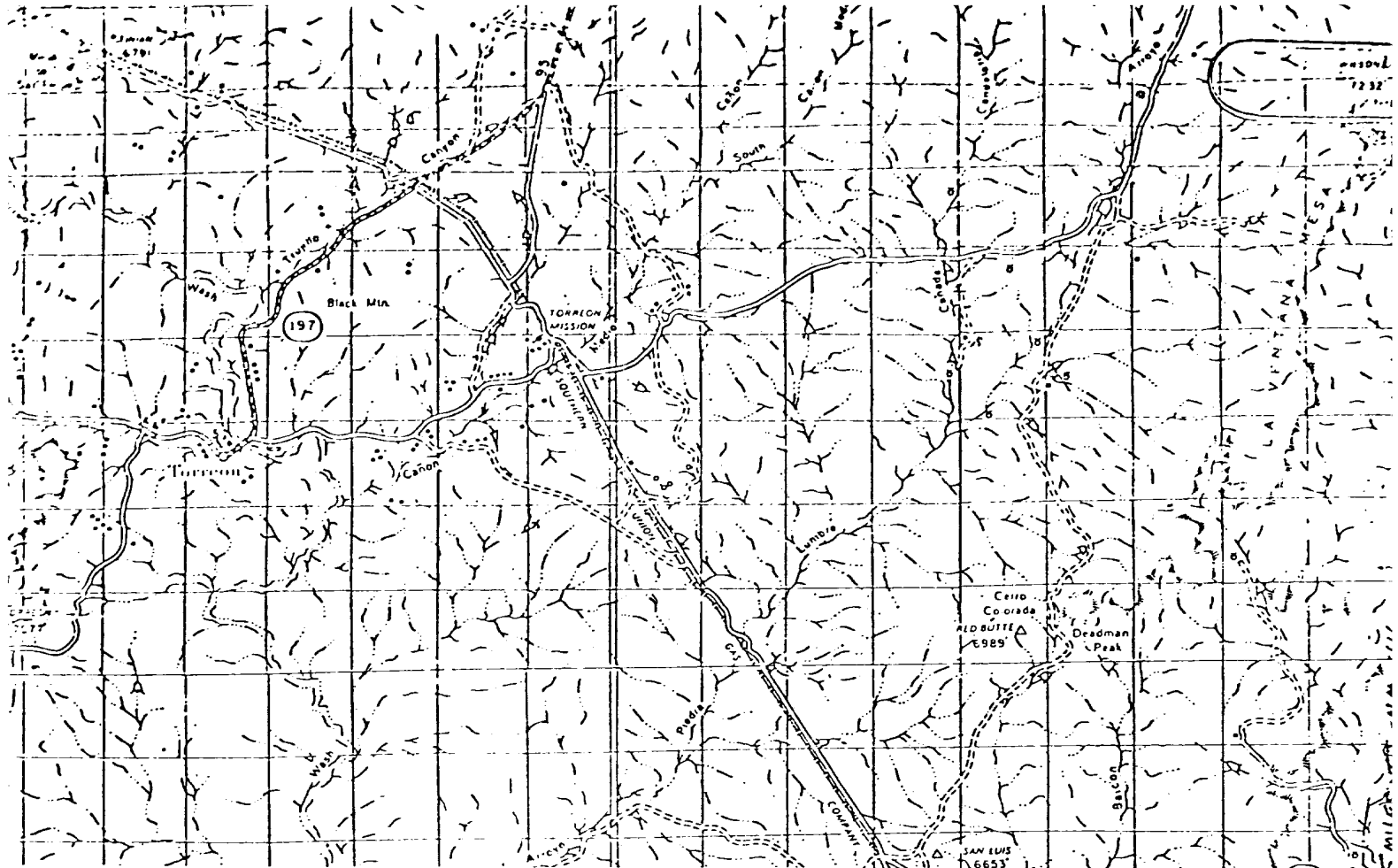
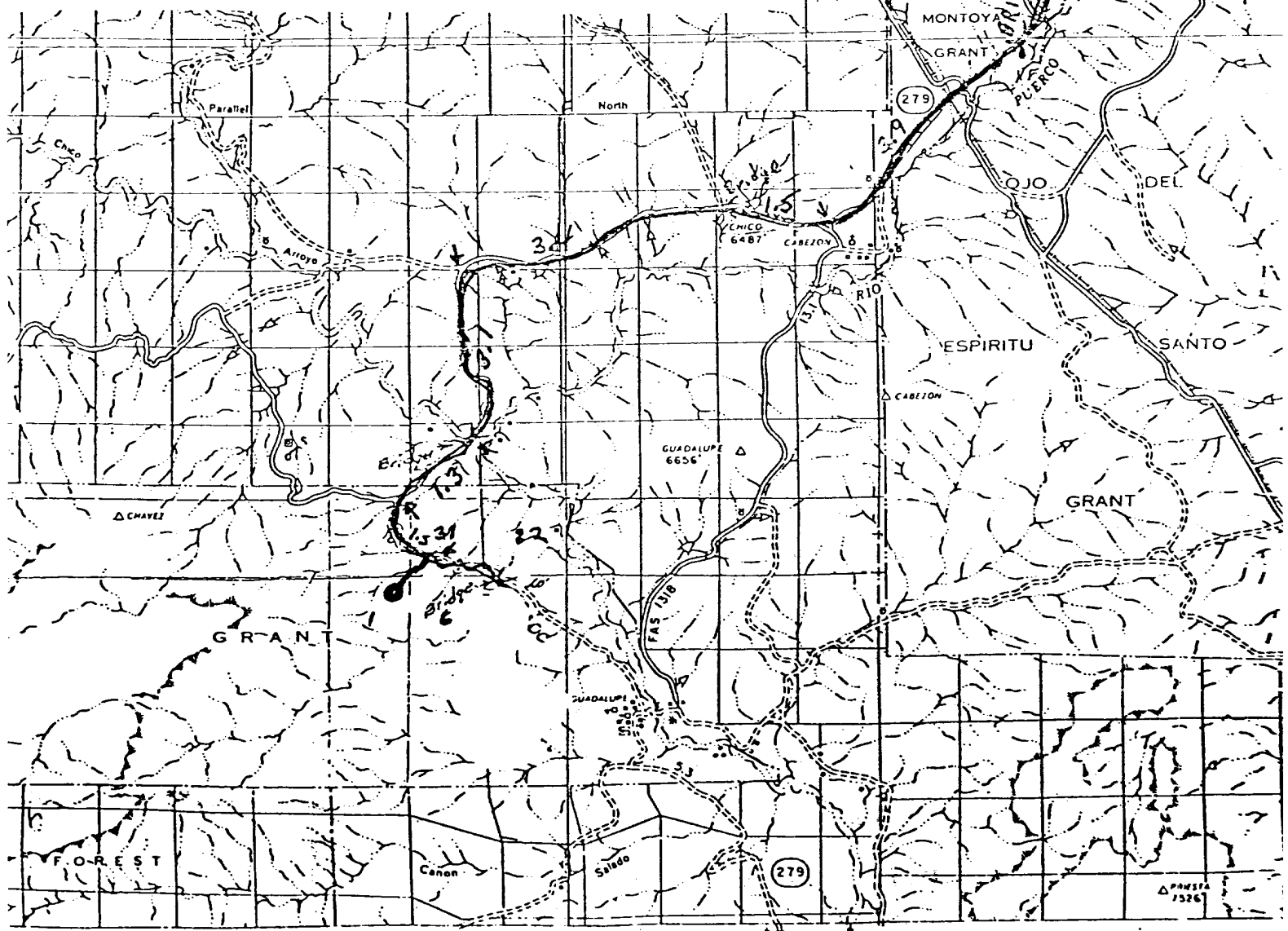


DIAGRAM OF WELL LOCATION

AND DRILLING RIG LAYOUT



From Cuba, N.M. go south on N.M. 44 for 21 mi.
 turn right, stay on main road for 13 miles,
 keep right at Cabezón turnoff for 4.9 miles,
 turn left for 4.4 miles, then left for 1.5 mi.,
 then right to location.



Longitude -10
 R. 4 W.

R. 3 W.

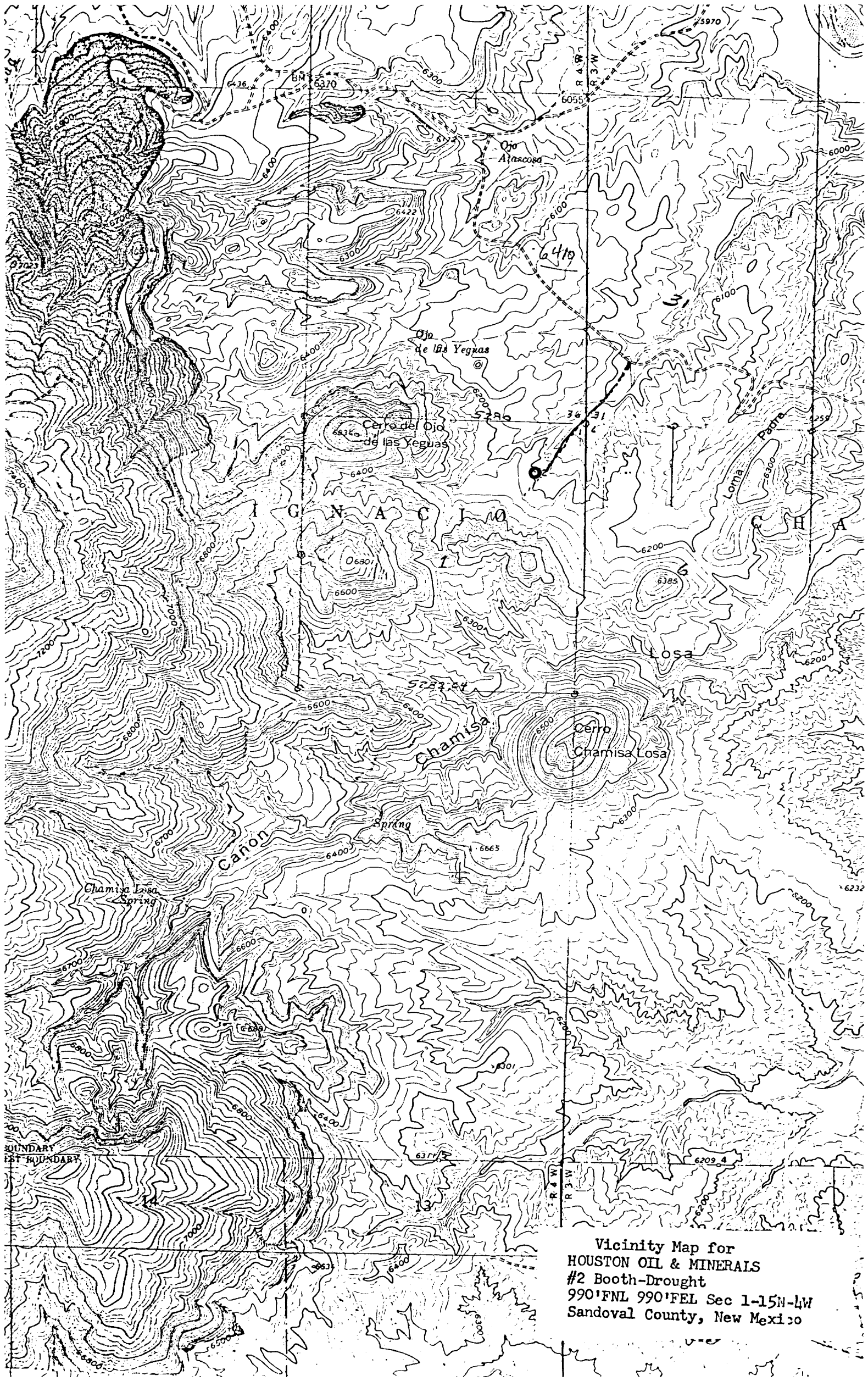
R. 2 W.

Scale 1/2 inch or 1 inch = 2 Miles

DATE OF INVENTORY
 MCKINLEY COUNTY 1964
 SANDOVAL COUNTY 1961

CABEZÓN
 QUADRANG
 28

RECEIVED
FEB 10 1977
U. S. GEOLOGICAL SURVEY
DURANGO, COLO.



Vicinity Map for
HOUSTON OIL & MINERALS
#2 Booth-Drought
990'FNL 990'FEL Sec 1-15N-4W
Sandoval County, New Mexico