

UNITED STATES  
DEPARTMENT OF THE INTERIOR  
GEOLOGICAL SURVEY

## APPLICATION FOR PERMIT TO DRILL, DEEPEN, OR PLUG BACK

## 1a. TYPE OF WORK

DRILL ☒DEEPEN ☐PLUG BACK ☐

## b. TYPE OF WELL

OIL  
WELL ☐GAS  
WELL ☒

OTHER

SINGLE  
ZONE ☒MULTIPLE  
ZONE ☐

## 2. NAME OF OPERATOR

Chace Oil Company

## 3. ADDRESS OF OPERATOR

313 Washington, SE, Albuquerque, NM 87108

## 4. LOCATION OF WELL (Report location clearly and in accordance with any State requirements.\*)

At surface

Unit "M" 790' SL &amp; 1150 WL

At proposed prod. zone

Same

## 14. DISTANCE IN MILES AND DIRECTION FROM NEAREST TOWN OR POST OFFICE\*

9 miles South of Lybrook, NM

## 15. DISTANCE FROM PROPOSED\*

LOCATION TO NEAREST  
PROPERTY OR LEASE LINE, FT.

(Also to nearest drilg. unit line, if any)

1150

## 16. NO. OF ACRES IN LEASE

160

17. NO. OF ACRES ASSIGNED  
TO THIS WELL

160

## 18. DISTANCE FROM PROPOSED LOCATION\*

TO NEAREST WELL, DRILLING, COMPLETED,  
OR APPLIED FOR, ON THIS LEASE, FT.

2800'

## 19. PROPOSED DEPTH

2000'

## 20. ROTARY OR CABLE TOOLS

Rotary

## 21. ELEVATIONS (Show whether DF, RT, GR, etc.)

6838 GR

## 22. APPROX. DATE WORK WILL START\*

June 1, 1977

## 23.

## PROPOSED CASING AND CEMENTING PROGRAM

SIZE OF HOLE	SIZE OF CASING	WEIGHT PER FOOT	SETTING DEPTH	QUANTITY OF CEMENT
12 3/4	8 5/8"	24#	100'	100 sxs

Drill 12 3/4" hole to 103' Set 8 5/8" csg. to approx. 100'  
Cement to surface. Using adequate mud system and BOP drill  
a 7 7/8" hole to 2000' Log with Induction and Density logs  
and if productive run 4 1/2" - 9.5# csg to TD and complete as  
gas well.



*Gas not dedicated*  
IN ABOVE SPACE DESCRIBE PROPOSED PROGRAM: If proposal is to deepen or plug back, give data on present productive zone and proposed new productive zone. If proposal is to drill or deepen directionally, give pertinent data on subsurface locations and measured and true vertical depths. Give blowout preventer program, if any.

## 24.

SIGNED

*Reggie McCary*

TITLE

President

DATE

3-14-77

(This space for Federal or State office use)

PERMIT NO.

APPROVAL DATE

APPROVED BY

TITLE

DATE

CONDITIONS OF APPROVAL, IF ANY:

\*See Instructions On Reverse Side

# NEW MEXICO OIL CONSERVATION COMMISSION

## WELL LOCATION AND ACERAGE DEDICATION PLAT

All distances must be from the outer boundaries of the Section

Operator <b>CHACE OIL COMPANY</b>			Lease <b>RUSTY NAVAJO</b>		Well No. <b>7</b>
Unit Letter <b>M</b>	Section <b>22</b>	Township <b>22 NORTH</b>	Range <b>7 WEST</b>	County <b>SANDOVAL</b>	
Actual Footage Location of Well:					
<b>790</b> feet from the <b>SOUTH</b> line and		<b>1150</b> feet from the <b>WEST</b> line			
Ground Level Elev <b>6838</b>	Producing Formation <i>Chaco</i>	Pool <i>Rusty</i>	Dedicated Acreage: <b>160</b> Acres		

1. Outline the acreage dedicated to the subject well by colored pencil or hachure marks on the plat below.
2. If more than one lease is dedicated to the well, outline each and identify the ownership thereof (both as to working interest and royalty),
3. If more than one lease of different ownership is dedicated to the well, have the interests of all owners been consolidated by communitization, unitization, force-pooling, etc?  
☐ Yes   ☐ No   If answer is "yes," type of consolidation \_\_\_\_\_

If answer is "no," list the owners and tract descriptions which have actually consolidated. (Use reverse side of this form if necessary.) \_\_\_\_\_

No allowable will be assigned to the well until all interests have been consolidated (by communitization, unitization, forced-pooling, or otherwise) or until a non standard unit, eliminating such interests, has been approved by the Commission.

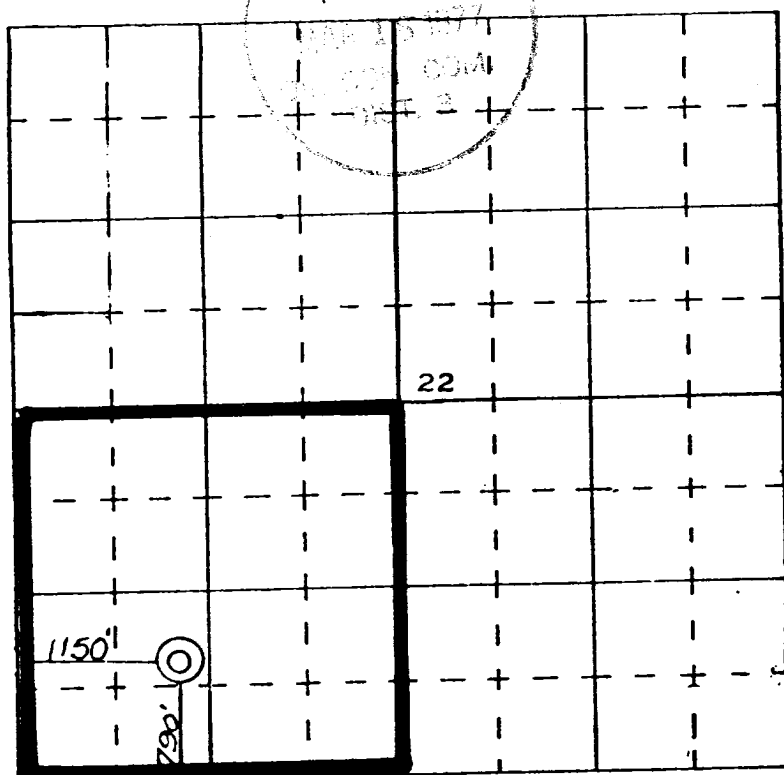
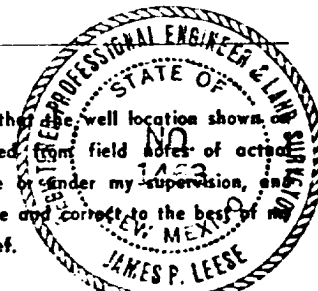
### CERTIFICATION

I hereby certify that the information contained herein is true and complete to the best of my knowledge and belief.

*Royce McCary*  
 Name  
**Royce McCary**  
 Position  
**President**  
 Company  
**Chace Oil Co.**  
 Date  
**3-14-77**

I hereby certify that the well location shown on this plat was plotted from field notes of actual surveys made by me or under my supervision, and that the same is true and correct to the best of my knowledge and belief.

**2 March 1977**  
 Date Surveyed  
*James P. Leese*  
 Registered Professional Engineer  
 and/or Land Surveyor **James P. Leese**



SCALE—4 INCHES EQUALS 1 MILE

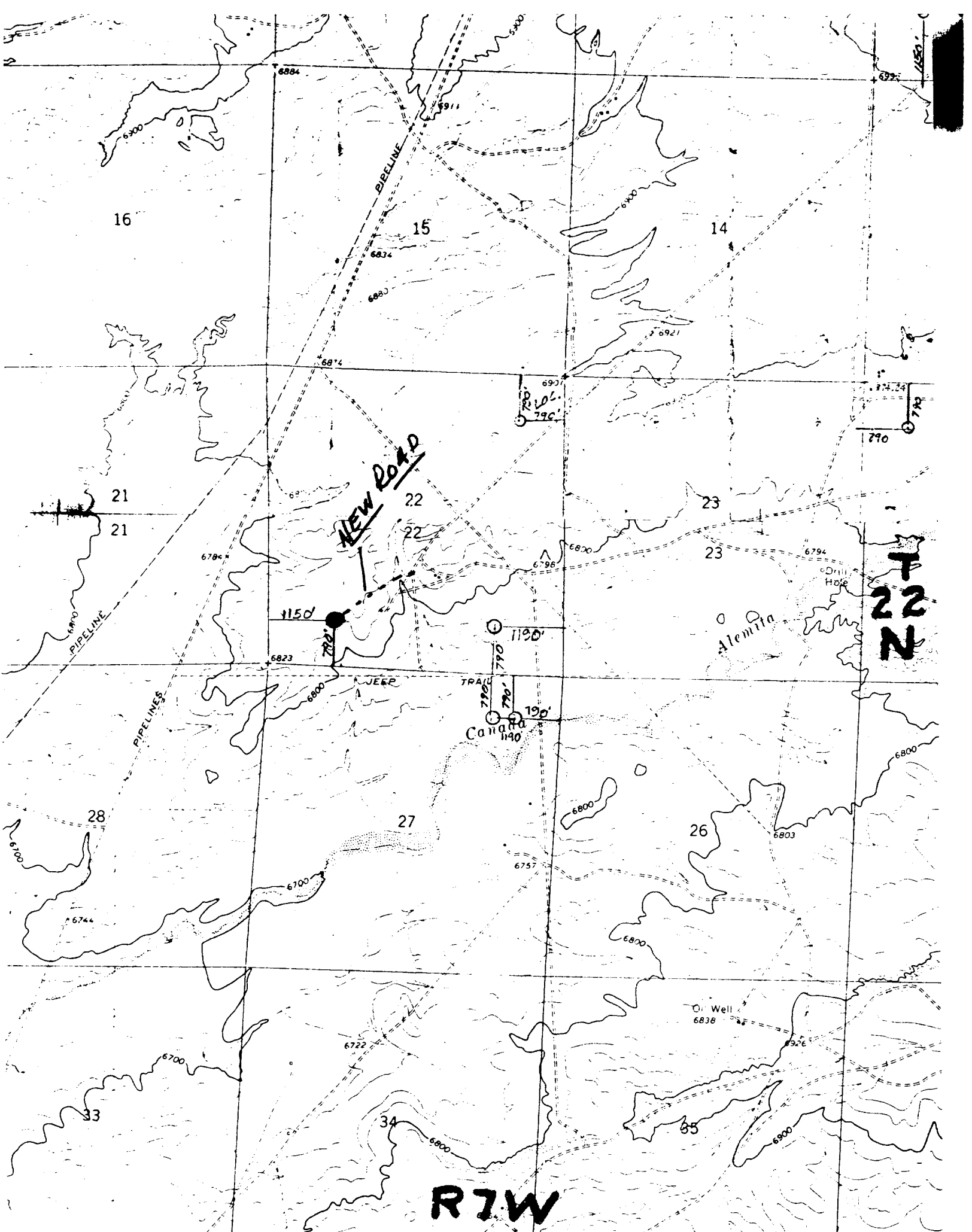
SAN JUAN ENGINEERING COMPANY, FARMINGTON, N. M.

**1463**  
 Certificate No.

## DEVELOPMENT PLAN FOR SURFACE RESUME

Chace Oil Company #7 Rusty Navajo  
Unit M 790' SL & 1150' WL Sec. 22  
T22N-R7W Sandoval County, New Mexico

1. Location and vicinity map, San Juan Engineering Company Exit Hwy 44 at Lybrook
2. 1400' of new road to be compacted to connect drill site with existing area roads. New road to be 20' in width.
3. Well site is approximately 2600' West of the Rusty Navajo #8 in unit P, Section 22, T22N-R7W.
4. Roads shown on vicinity plat and location plat.
5. In case of production (gas) well will be tied into a gathering line, but market has not been established. No tank batteries or separators are anticipated at this time.
6. Water to come from private source at Lybrook, New Mexico.
7. All trash and waste material will be placed in the mud pit and covered. No additional surface to be used, such as air strips or campsites.
8. NONE
9. NONE
10. Rig layout shown on plat attached
11. The topography is rolling, covered with sagebrush, sand, broom snakeweed. A few Pinon & Cedar trees.
12. Drilling pad to be compacted.
13. After well completion, location to be restored to original condition less a few sagebrush and sodded with required seeds.
14. Field representative to contact is Royce McCary, telephone 266-5562 at 313 Washington S.E., Albuquerque, New Mexico 87108



1. Location 200' x 200'
2. Reserve pit 40' x 75'
3. Rig & Location
4. Mud system
5. Electrical system
6. New road
7. Trailer House

NW $\frac{1}{4}$  Sec. 22  
 T22N-R7W  
 Sandoval County, New Mexico

