

NO. OF COPIES RECEIVED	7
DISTRIBUTION	
SANTA FE	1
FILE	1
U.S.G.S.	2
LAND OFFICE	
OPERATOR	3

NEW MEXICO OIL CONSERVATION COMMISSION

30-043-20270  
Form C-101  
Revised 1-1-65

5A. Indicate Type of Lease  
STATE  FEE

5. State Oil & Gas Lease No.  
State

APPLICATION FOR PERMIT TO DRILL, DEEPEN, OR PLUG BACK

1a. Type of Work		7. Unit Agreement Name	
b. Type of Well DRILL <input checked="" type="checkbox"/> DEEPEN <input type="checkbox"/> PLUG BACK <input type="checkbox"/> OIL WELL <input type="checkbox"/> GAS WELL <input checked="" type="checkbox"/> OTHER _____ SINGLE ZONE <input type="checkbox"/> MULTIPLE ZONE <input checked="" type="checkbox"/>		N/A	
2. Name of Operator Basin Fuels, Incorporated		8. Farm or Lease Name Mesa State 16	
3. Address of Operator Suite 300, 300 W. Arrington, Farmington, N.M. 87401		9. Well No. 1	
4. Location of Well UNIT LETTER P LOCATED 1020 FEET FROM THE South LINE AND 1045 FEET FROM THE East LINE OF SEC. 16 TWP. 22N RGE. 7W NMPM		10. Field and Pool, or Wildcat Rusty Chacra	
21. Elevations (Show whether DF, RT, etc.) 6815' GL		19. Proposed Depth 1900'	19A. Formation Chacra (La Ventana)
21A. Kind & Status Plug. Bond Statewide	21B. Drilling Contractor Lee Wilson	20. Rotary or C.T. Rotary	
22. Approx. Date Work will start May 15, 1977		12. County Sandoval	

PROPOSED CASING AND CEMENT PROGRAM

SIZE OF HOLE	SIZE OF CASING	WEIGHT PER FOOT	SETTING DEPTH	SACKS OF CEMENT	EST. TOP
9-7/8"	7"	28 lb.	100'	75	Circulate Cement
6-1/4"	4 1/2"	9 1/2 lb.	1900'	100	1400'

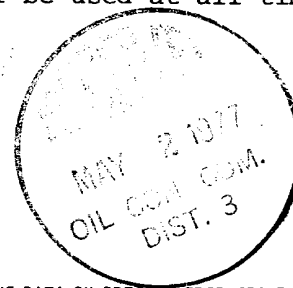
Set 7" surface casing at 100' and circulate cement. Drill to 1900', run logs, if production is indicated set and cement 4 1/2" production casing with 100 sacks cement. Gun perforate, fracture treat in a completion attempt. If non-commercial, will plug and abandon in accordance with state abandonment regulations and restore surface.

A single manual blow-out preventer with drill rams will be used at all times material to the drilling of the well.

The well is not dedicated to a pipeline.

APPROVAL VALID  
FOR 90 DAYS UNLESS  
DRILLING COMMENCED.

EXPIRES 7-31-77



IN ABOVE SPACE DESCRIBE PROPOSED PROGRAM, IF PROPOSAL IS TO DEEPEN OR PLUG BACK, GIVE DATA ON PRESENT PRODUCTIVE ZONE AND PROPOSED NEW PRODUCTIVE ZONE. GIVE BLOWOUT PREVENTER PROGRAM, IF ANY.

I hereby certify that the information above is true and complete to the best of my knowledge and belief.

Signed Lee B. Sumner Title President Date 4/29/77

(This space for State Use)

APPROVED BY AR Hendrick TITLE SUPERVISOR DIST. 3 DATE MAY 2 1977

CONDITIONS OF APPROVAL, IF ANY:

**NEW MEXICO OIL CONSERVATION COMMISSION  
WELL LOCATION AND ACERAGE DEDICATION PLAT**

All distances must be from the outer boundaries of the Section

Operator: <b>BASIN FUELS, INCORPORATED</b>		Lease: <b>Mesa State 16</b>		Well No: <b>2-1</b>
Unit Letter: <b>P</b>	Section: <b>16</b>	Township: <b>22 North</b>	Range: <b>7 West</b>	County: <b>SANDOVAL</b>
Actual Footage Location of Well: <b>1020</b> feet from the <b>SOUTH</b> line and <b>1045</b> feet from the <b>EAST</b> line				
Ground Level Elev.: <b>6815</b>	Producing Formation: <b>Chacra (La Ventana)</b>	Pool: <b>Rusty Chacra</b>	Dedicated Acreage: <b>160</b> Acres	

1. Outline the acreage dedicated to the subject well by colored pencil or hachure marks on the plat below.
2. If more than one lease is dedicated to the well, outline each and identify the ownership thereof (both as to working interest and royalty),
3. If more than one lease of different ownership is dedicated to the well, have the interests of all owners been consolidated by communitization, unitization, force-pooling, etc?  
 Yes    No   If answer is "yes," type of consolidation .....

If answer is "no," list the owners and tract descriptions which have actually consolidated. (Use reverse side of this Form if necessary.) .....

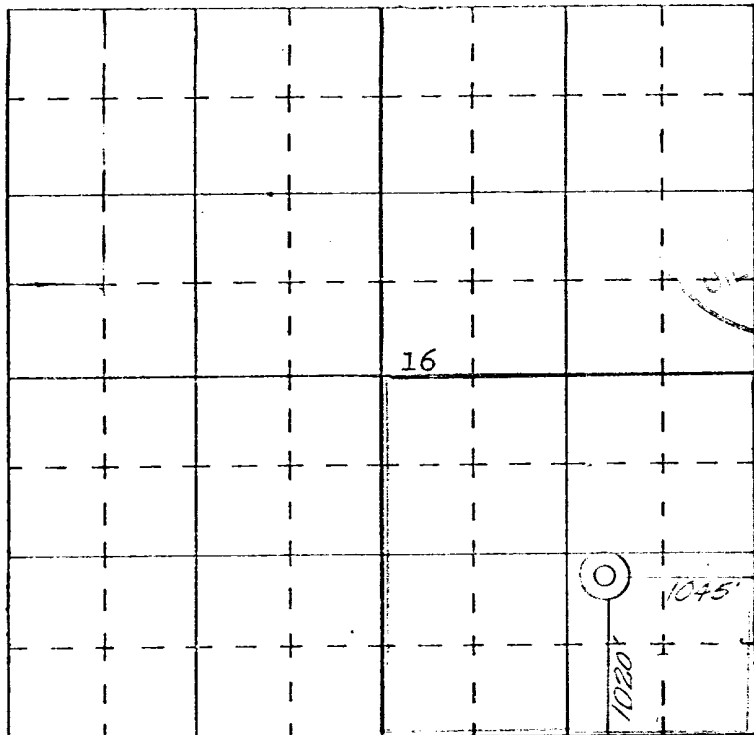
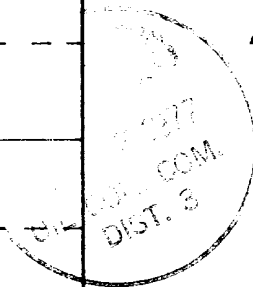
No allowable will be assigned to the well until all interests have been consolidated (by communitization, unitization, forced-pooling, or otherwise) or until a non standard unit, eliminating such interests, has been approved by the Commission.

**CERTIFICATION**

I hereby certify that the information contained herein is true and complete to the best of my knowledge and belief.

*Joel B. Burr, Jr.*  
**Joel B. Burr, Jr.**

Name  
**President**  
Position  
**Basin Fuels, Incorporated**  
Company  
**4/29/77**  
Date



I hereby certify that the well location shown on this plat was plotted from field notes of actual surveys made by me or under my supervision, and that the same is true and correct to the best of my knowledge and belief.

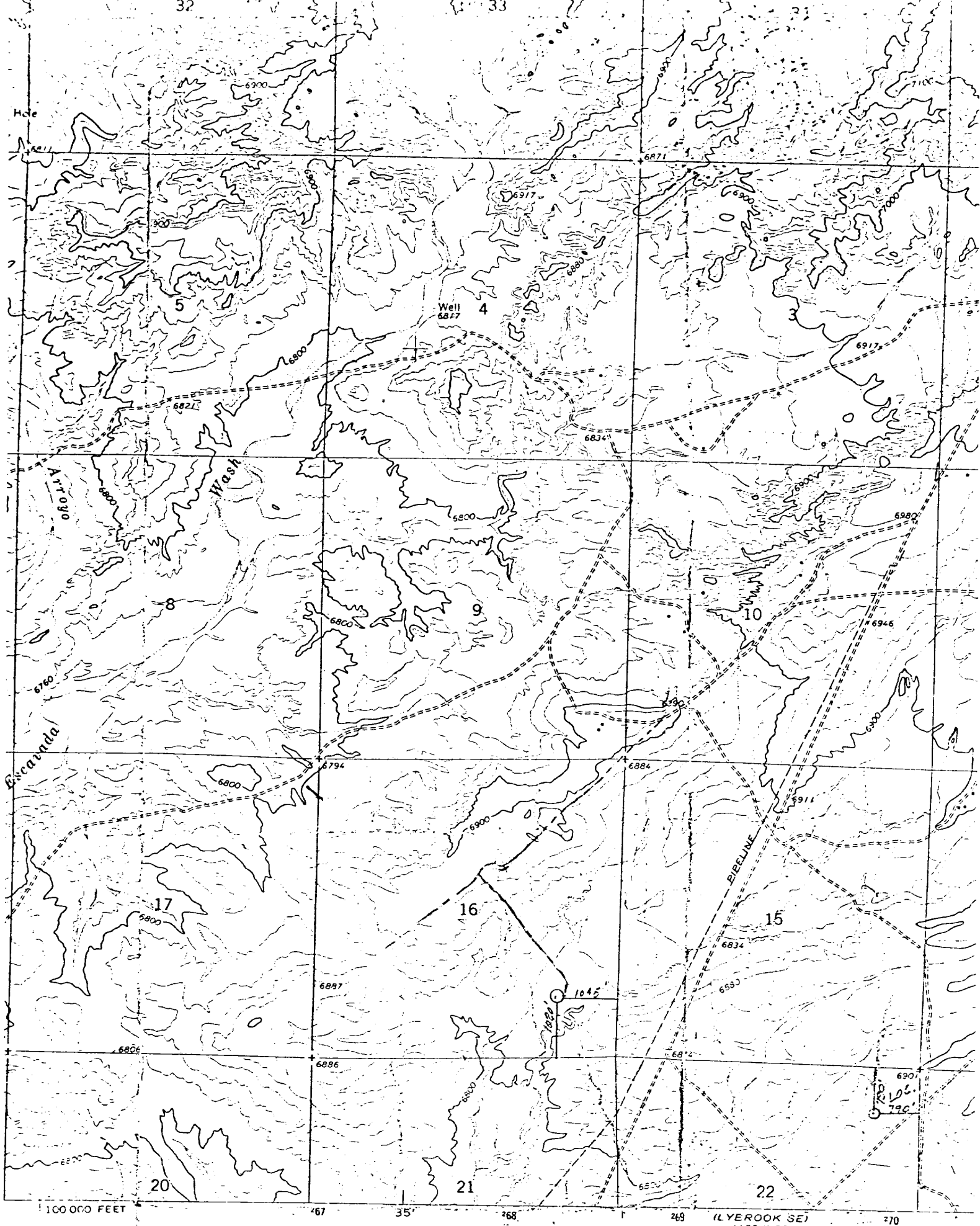
**26 April 1977**  
Date Surveyed  
*James P. Leese*  
Registered Professional Engineer  
and/or Land Surveyor **James P. Leese**

**1463**

Certificate No. \_\_\_\_\_

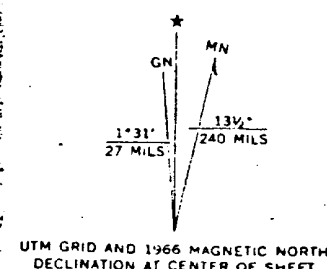
SCALE—4 INCHES EQUALS 1 MILE

**SAN JUAN ENGINEERING COMPANY, FARMINGTON, N. M.**

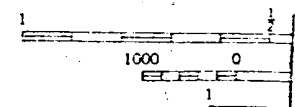


cal Survey

stem,



UTM GRID AND 1966 MAGNETIC NORTH DECLINATION AT CENTER OF SHEET



SCALE 1:24000

Vicinity Map For  
**BASIN FUELS**  
 Loc. in SE/4 Sec. 16,  
 T22N, R7W, N.M.P.M.,  
 Sandoval Co., N. Mex.  
 scale: 1" = 2000'

THIS MAP COMPLIES WITH NATIONAL MAP ACCURACY STANDARDS  
 FOR SALE BY U.S. GEOLOGICAL SURVEY, DENVER, COLORADO 80225, OR WASH:  
 A FOLDER DESCRIBING TOPOGRAPHIC MAPS AND SYMBOLS IS AVAILABLE ON I