

**NEW MEXICO OIL CONSERVATION COMMISSION
WELL LOCATION AND ACREAGE DEDICATION PLAT**

Form C-102
Supersedes C-128
Effective 1-1-65

All distances must be from the outer boundaries of the Section.

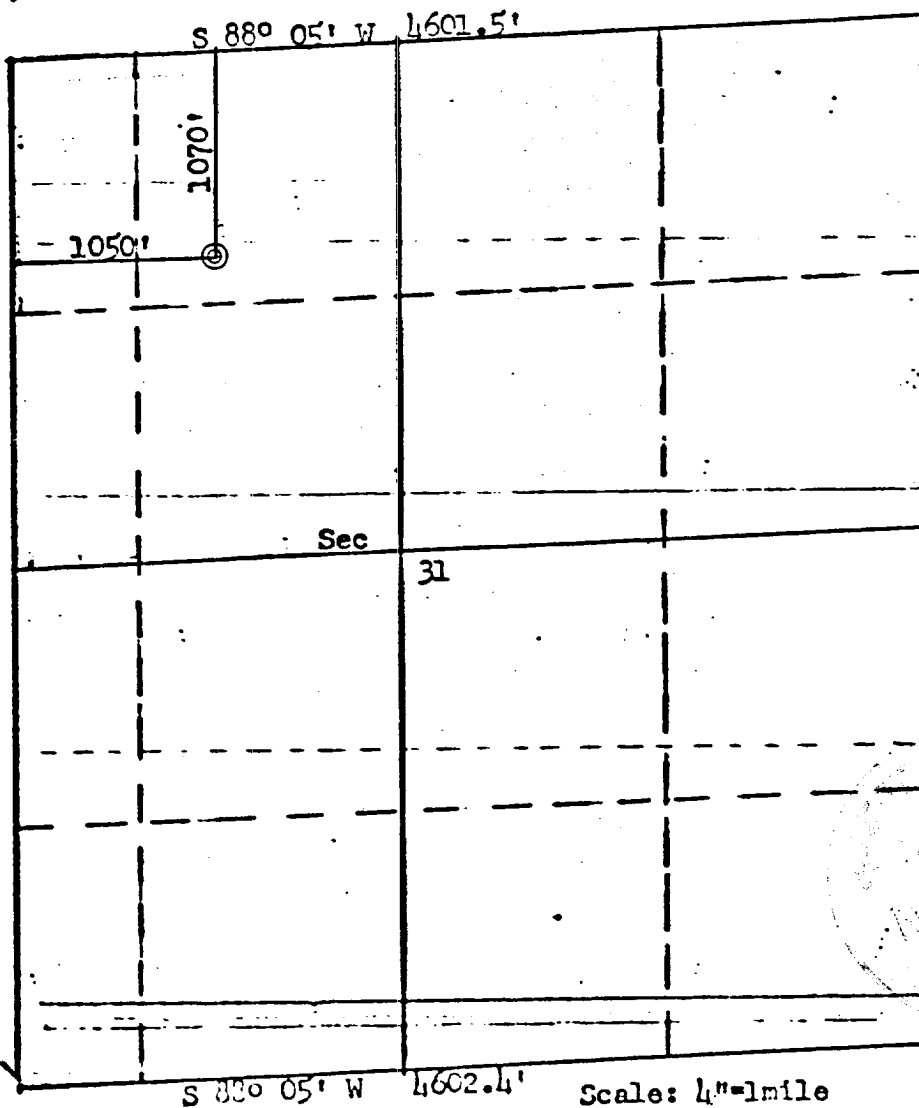
Operator Merrion & Bayless			Lease Jicarilla 428		Well No. 5
Unit Letter C	Section 31	Township 23N	Range 4W	County Sandoval	
Actual Footage Location of Well: 1070 feet from the North line and 1050 feet from the West line					
Ground Level Elev. 6838	Producing Formation Chacra		Pool Undesignated		Dedicated Acreage: 260 118.89 Acres

1. Outline the acreage dedicated to the subject well by colored pencil or hachure marks on the plat below.
2. If more than one lease is dedicated to the well, outline each and identify the ownership thereof (both as to working interest and royalty).
3. If more than one lease of different ownership is dedicated to the well, have the interests of all owners been consolidated by communitization, unitization, force-pooling, etc?

Yes No If answer is "yes," type of consolidation _____

If answer is "no," list the owners and tract descriptions which have actually been consolidated. (Use reverse side of this form if necessary.) _____

No allowable will be assigned to the well until all interests have been consolidated (by communitization, unitization, forced-pooling, or otherwise) or until a non-standard unit, eliminating such interests, has been approved by the Commission.



CERTIFICATION

I hereby certify that the information contained herein is true and complete to the best of my knowledge and belief.

Robert L. Bayless
Name

Robert L. Bayless

Position

Co-Owner

Company

Merrion & Bayless

Date

March 31, 1978

I hereby certify that the well location shown on this plat was plotted from field notes of actual surveys made by me or under my supervision, and that the same is true and correct to the best of my knowledge and belief.

Date Surveyed

April 14, 1977

Registered Professional Engineer and Land Surveyor

Fred B. Kerr
Fred B. Kerr

Certificate No.

3950

Scale: 4"=1mile