

UNITED STATES
DEPARTMENT OF THE INTERIOR
GEOLOGICAL SURVEY30-043-20279
5. LEASE DESIGNATION AND SERIAL NO.

Jicarilla 15

6. IF INDIAN, ALLOTTEE OR TRIBE NAME

Jicarilla Apache

7. UNIT AGREEMENT NAME

8. FARM OR LEASE NAME

Chace Apache

9. WELL NO.

3

10. FIELD AND POOL, OR WILDCAT

Chacon Dakota

11. SEC., T., R., M., OR BLK.
AND SURVEY OR AREA

Sec. 20 T23N-R3W

12. COUNTY OR PARISH

Sandoval

13. STATE

NM

APPLICATION FOR PERMIT TO DRILL, DEEPEN, OR PLUG BACK

1a. TYPE OF WORK

DRILL ☒DEEPEN ☐PLUG BACK ☐

b. TYPE OF WELL

OIL
WELL ☒GAS
WELL ☐

OTHER

SINGLE
ZONE ☒MULTIPLE
ZONE ☐

2. NAME OF OPERATOR

Chace Oil Company, Inc.

3. ADDRESS OF OPERATOR

313 Washington, SE Albuquerque, NM 87108

4. LOCATION OF WELL (Report location clearly and in accordance with any State requirements.)*

At surface

Unit F - 1850' NL & 1850 WL

At proposed prod. zone

14. DISTANCE IN MILES AND DIRECTION FROM NEAREST TOWN OR POST OFFICE*

Regina, NM 13 miles NE

15. DISTANCE FROM PROPOSED*

LOCATION TO NEAREST

PROPERTY OR LEASE LINE, FT.

(Also to nearest drig. unit line, if any)

1850'

16. NO. OF ACRES IN LEASE

1600

17. NO. OF ACRES ASSIGNED
TO THIS WELL

160

18. DISTANCE FROM PROPOSED LOCATION*

TO NEAREST WELL, DRILLING, COMPLETED,
OR APPLIED FOR, ON THIS LEASE, FT.

2500'

19. PROPOSED DEPTH

7600'

20. ROTARY OR CABLE TOOLS

Rotary

21. ELEVATIONS (Show whether DF, RT, GR, etc.)

7257 GL

22. APPROX. DATE WORK WILL START*

23.

PROPOSED CASING AND CEMENTING PROGRAM

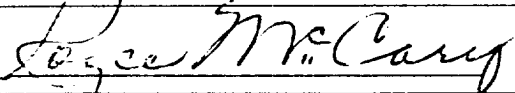
SIZE OF HOLE	SIZE OF CASING	WEIGHT PER FOOT	SETTING DEPTH	QUANTITY OF CEMENT
13 1/2	8 5/8	24#	250'	225 sxs

Drill 265' 13 1/2" surface hole, set 250' 8 5/8" csg. Cement to surface with 225 sxs. Using oil base mud (15%) oil and adequate BOP drill a 7-7/8" hole to 7800' to test the Dakota formation. If productive run 4 1/2" 10.5# or heavier csg. to total depth and cement in stages to cover the producing zones including the Pictured Cliffs formation. If non-productive plug and abandon. The BOP to be a Schaeffer double gate Hydraulic tested to 5000#. Coleman Drilling Company to be the contractor.

IN ABOVE SPACE DESCRIBE PROPOSED PROGRAM: If proposal is to deepen or plug back, give data on present productive zone and proposed new productive zone. If proposal is to drill or deepen directionally, give pertinent data on subsurface locations and measured and true vertical depths. Give blowout preventer program, if any.

24.

SIGNED



TITLE President

DATE 5-23-77

(This space for Federal or State office use)

PERMIT NO.

APPROVAL DATE

APPROVED BY

TITLE

DATE

CONDITIONS OF APPROVAL, IF ANY:



*See Instructions On Reverse Side

**NEW MEXICO OIL CONSERVATION COMMISSION
WELL LOCATION AND ACERAGE DEDICATION PLAT**

All distances must be from the outer boundaries of the Section

Operator CHACE OIL COMPANY			Lease CHACE APACHE		Well No. 3
Unit Letter F	Section 20	Township 23 NORTH	Range 3 WEST	County SANDOVAL	

Actual Footage Location of Well:
1850 feet from the **NORTH** line and **1850** feet from the **WEST** line

Ground Level Elev. 7257	Producing Formation Dakota	Pool Chacon ext	Dedicated Acreage: 160 Acres
-----------------------------------	--------------------------------------	---------------------------	--

- Outline the acreage dedicated to the subject well by colored pencil or hatchure marks on the plat below.
- If more than one lease is dedicated to the well, outline each and identify the ownership thereof (both as to working interest and royalty),
- If more than one lease of different ownership is dedicated to the well, have the interests of all owners been consolidated by communitization, unitization, force-pooling, etc?

() Yes () No If answer is "yes," type of consolidation

If answer is "no," list the owners and tract descriptions which have actually consolidated. (Use reverse side of this Form if necessary.)

No allowable will be assigned to the well until all interests have been consolidated (by communitization, unitization, forced-pooling, or otherwise) or until a non standard unit, eliminating such interests, has been approved by the Commission.

CERTIFICATION

I hereby certify that the information contained herein is true and complete to the best of my knowledge and belief.

Royce McCary
 Name
Royce McCary

Position
President

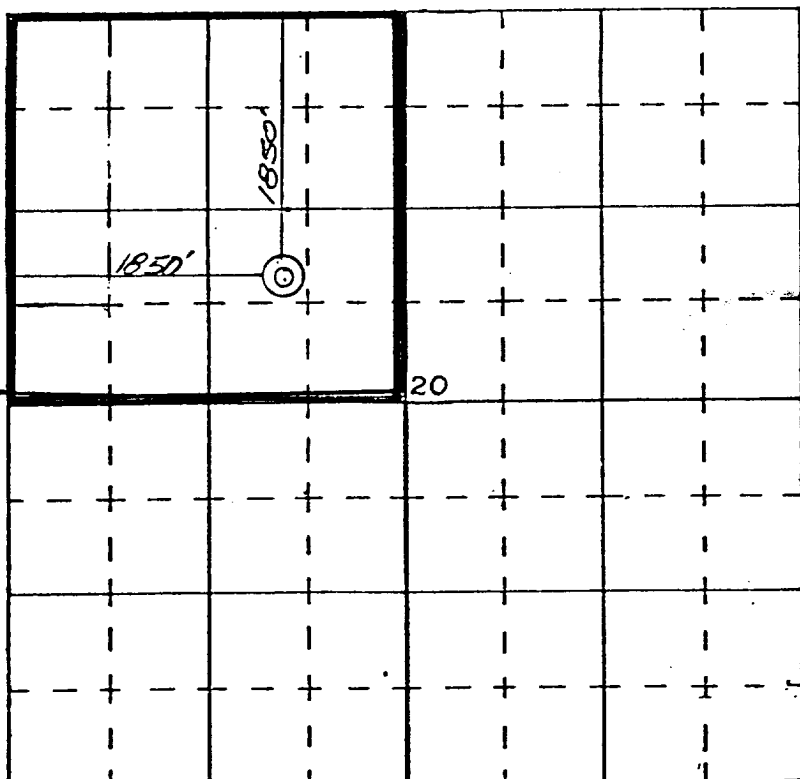
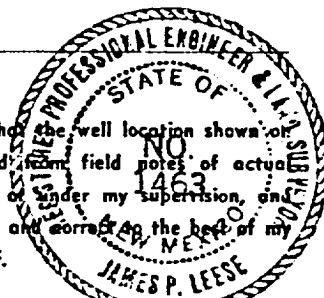
Company
Chace Oil Company, Inc.

Date
5-23-77

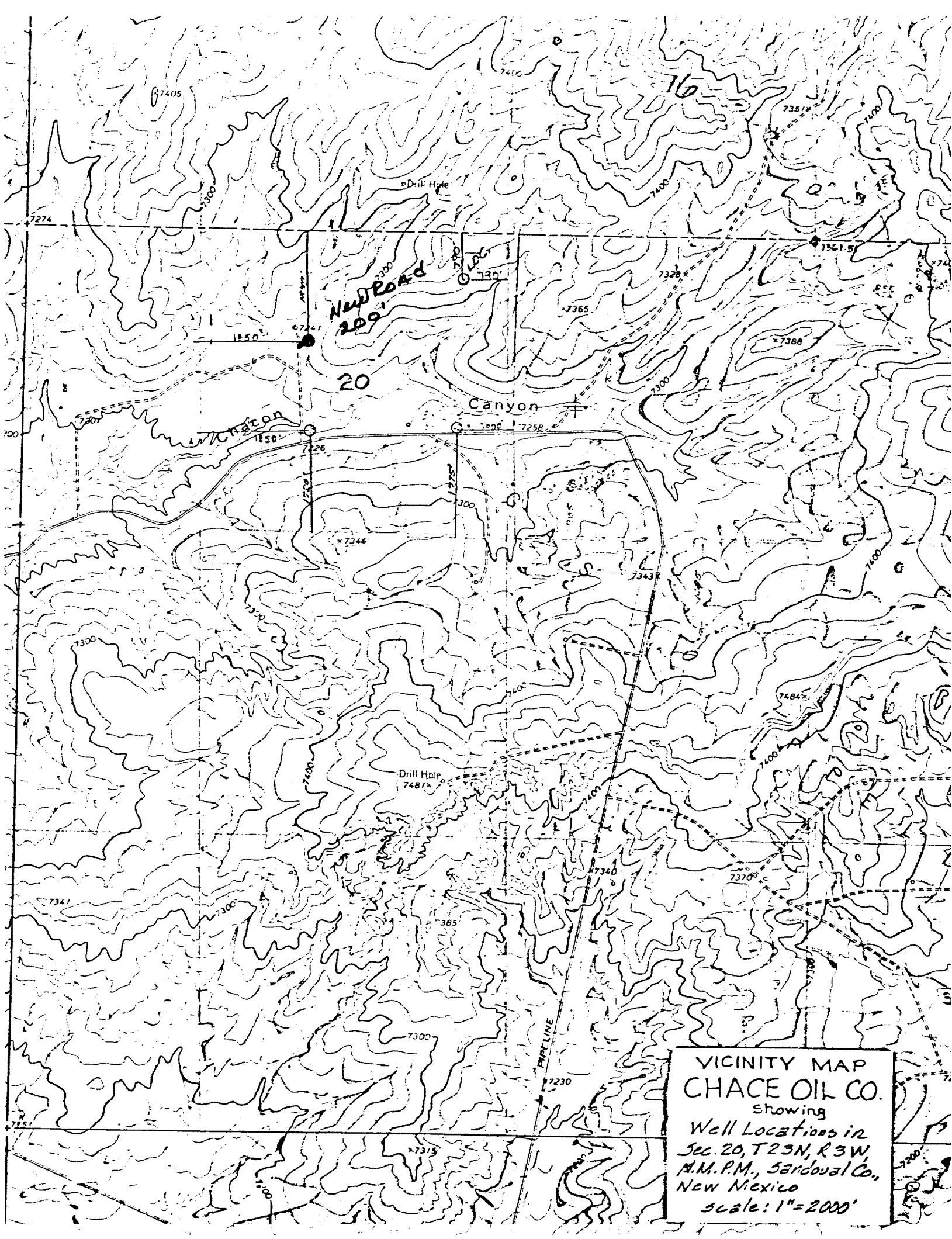
I hereby certify that the well location shown on this plat was plotted from field notes of actual surveys made by me or under my supervision, and that the same is true and correct to the best of my knowledge and belief.

6 May 1977

Date Surveyed
James P. Leese
 Registered Professional Engineer
 and/or Land Surveyor **James P. Leese**



SCALE—4 INCHES EQUALS 1 MILE



VICINITY MAP
CHACE OIL CO.
Showing
Well Locations in
Sec. 20, T23N, R3W,
H.M.P.M., Sandoval Co.,
New Mexico
Scale: 1"=2000'