

**NEW MEXICO OIL CONSERVATION COMMISSION
WELL LOCATION AND ACERAGE DEDICATION PLAT**

All distances must be from the outer boundaries of the Section

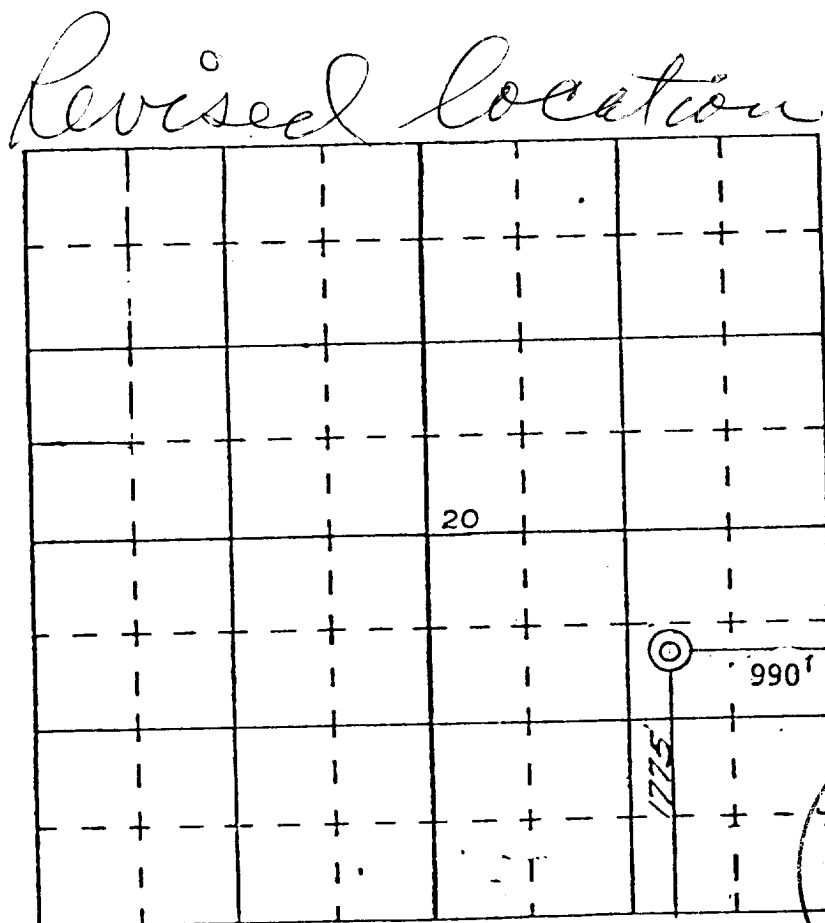
Operator CHACE OIL COMPANY		Lease CHACE APACHE		Well No. 2
Unit Letter I	Section 20	Township 23 NORTH	Range 3 WEST	County SANDOVAL
Actual Footage Location of Well: 1775 feet from the SOUTH line and 990' feet from the EAST line				
Ground Level Elev. 7250	Producing Formation		Pool	Dedicated Acreage Acres

- Outline the acreage dedicated to the subject well by colored pencil or hatchure marks on the plat below.
- If more than one lease is dedicated to the well, outline each and identify the ownership thereof (both as to working interest and royalty).
- If more than one lease of different ownership is dedicated to the well, have the interests of all owners been consolidated by communitization, unitization, force-pooling, etc?

() Yes () No If answer is "yes," type of consolidation _____

If answer is "no," list the owners and tract descriptions which have actually consolidated. (Use reverse side of this form if necessary.) _____

No allowable will be assigned to the well until all interests have been consolidated (by communitization, unitization, forced-pooling, or otherwise) or until a non standard unit, eliminating such interests, has been approved by the Commission.



CERTIFICATION

I hereby certify that the information contained herein is true and complete to the best of my knowledge and belief.

Royce McCary
Name

Royce McCary
Position

President
Company

Chace Oil Company
Date

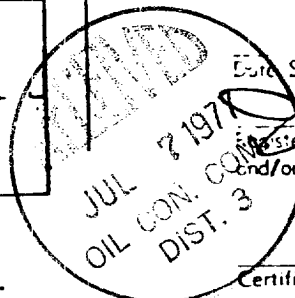
June 15, 1977

I hereby certify that the well location shown on this plat was plotted from field notes of actual surveys made by me or under my supervision and that the same is true and correct to the best of my knowledge and belief.

7 May 1977

Examined

James P. Leese
Registered Professional Engineer
and/or Land Surveyor



SCALE—4 INCHES EQUALS 1 MILE

SAN JUAN ENGINEERING COMPANY, FARMINGTON, N. M.

1463

Certificate No.