

**UNITED STATES
DEPARTMENT OF THE INTERIOR
GEOLOGICAL SURVEY**

APPLICATION FOR PERMIT TO DRILL, DEEPEN, OR PLUG BACK

1a. TYPE OF WORKDRILL ☒DEEPEN ☐PLUG BACK ☐**b. TYPE OF WELL**OIL WELL ☐GAS WELL ☒

OTHER

SINGLE ZONE ☐MULTIPLE ZONE ☐**2. NAME OF OPERATOR**

J. Gregory Merrion and Robert L. Bayless

3. ADDRESS OF OPERATOR

P.O. Box 507, Farmington, New Mexico 87401

4. LOCATION OF WELL (Report location clearly and in accordance with any State requirements.)*

At surface

790 FNL and 790 FEL

At proposed prod. zone

Same

14. DISTANCE IN MILES AND DIRECTION FROM NEAREST TOWN OR POST OFFICE***15. DISTANCE FROM PROPOSED***LOCATION TO NEAREST
PROPERTY OR LEASE LINE, FT.
(Also to nearest drlg. unit line, if any)**16. NO. OF ACRES IN LEASE****17. NO. OF ACRES ASSIGNED TO THIS WELL**

160

18. DISTANCE FROM PROPOSED LOCATION* TO NEAREST WELL, DRILLING, COMPLETED, OR APPLIED FOR, ON THIS LEASE, FT.**19. PROPOSED DEPTH**

2400 ft.

20. ROTARY OR CABLE TOOLS

Rotary

21. ELEVATIONS (Show whether DF, RT, GR, etc.)

6917 ft. G.L.

22. APPROX. DATE WORK WILL START*

As soon as possible

23.**PROPOSED CASING AND CEMENTING PROGRAM**

SIZE OF HOLE	SIZE OF CASING	WEIGHT PER FOOT	SETTING DEPTH	QUANTITY OF CEMENT
9-5/8"	7"	23 lb./ft.	60'	20 sax
4-3/4"	2-7/8"	6.5 lb./ft.	2400'	150 sax

Will drill 9-5/8" hole to 60 ft. and set 60 ft. of 7", 23 lb./ft. casing with 20 sax cement. Will drill 4-3/4" hole to 2400 ft. and run logs. If appears productive will run 2400 ft. of 2-7/8", 6.5 lb./ft., J-55 casing and cement with 150 sax. Will perforate and stimulate as required. A 6"-900 double ram blowout preventer will be used.

Note: Gas under development agreement to Northwest Pipeline.

IN ABOVE SPACE DESCRIBE PROPOSED PROGRAM: If proposal is to deepen or plug back, give data on present productive zone and proposed new productive zone. If proposal is to drill or deepen directionally, give pertinent data on subsurface locations and measured and true vertical depths. Give blowout preventer program, if any.

24.

SIGNED

Co-Owner

DATE

July 29, 1977

(This space for Federal or State office use)

PERMIT NO.

APPROVAL DATE

APPROVED BY

TITLE

DATE

CONDITIONS OF APPROVAL, IF ANY:

*See Instructions On Reverse Side

NEW MEXICO OIL CONSERVATION COMMISSION
WELL LOCATION AND ACREAGE DEDICATION PLAT

Form C-102
Supersedes C-128
Effective 1-1-65

All distances must be from the outer boundaries of the Section.

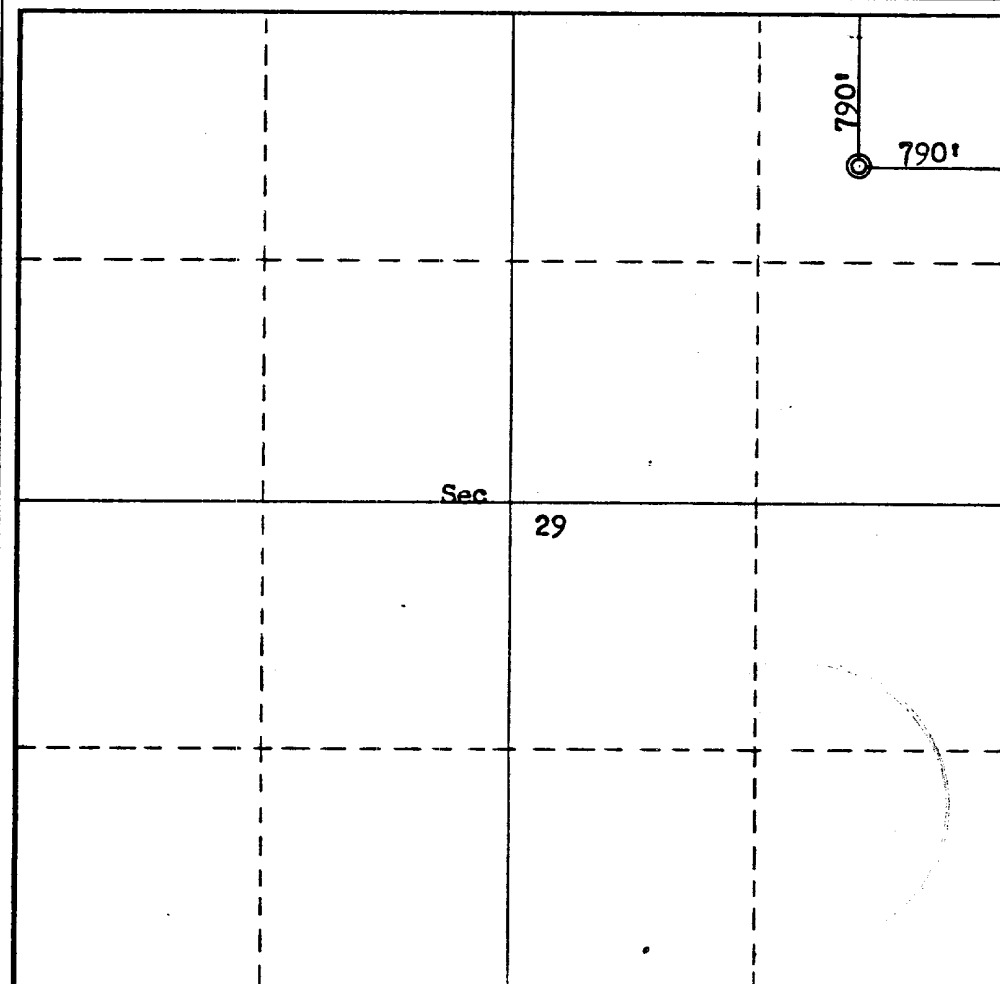
Operator Merrion & Bayless			Lease Jicarilla Contract 428		Well No. 6
Unit Letter A	Section 29	Township 23N	Range 4W	County Sandoval	
Actual Footage Location of Well:					
790 feet from the North line and		790 feet from the East line			
Ground Level Elev. 6917	Producing Formation Mesa Verde	Pool Ballard Picture Cliff		Dedicated Acreage: 160 Acres	

1. Outline the acreage dedicated to the subject well by colored pencil or hachure marks on the plat below.
2. If more than one lease is dedicated to the well, outline each and identify the ownership thereof (both as to working interest and royalty).
3. If more than one lease of different ownership is dedicated to the well, have the interests of all owners been consolidated by communitization, unitization, force-pooling, etc?

☐ Yes ☐ No If answer is "yes," type of consolidation _____

If answer is "no," list the owners and tract descriptions which have actually been consolidated. (Use reverse side of this form if necessary.) _____

No allowable will be assigned to the well until all interests have been consolidated (by communitization, unitization, forced-pooling, or otherwise) or until a non-standard unit, eliminating such interests, has been approved by the Commission.



CERTIFICATION,

I hereby certify that the information contained herein is true and complete to the best of my knowledge and belief.

Robert L. Bayless
Name

Robert L. Bayless

Position

Co-Owner

Company

Merrion & Bayless

Date

July 29, 1977

I hereby certify that the well location shown on this plat was plotted from field notes of actual surveys made by me or under my supervision, and that the same is true and correct to the best of my knowledge and belief.

Date Surveyed

July 27, 1977

Registered Professional Engineer and/or Land Surveyor

Fred B. Kerr Jr.
Fred B. Kerr Jr.

Certificate No.

3950

