

UNITED STATES  
DEPARTMENT OF THE INTERIOR  
GEOLOGICAL SURVEY

## APPLICATION FOR PERMIT TO DRILL, DEEPEN, OR PLUG BACK

## 1a. TYPE OF WORK

DRILL ☒DEEPEN ☐PLUG BACK ☐

## b. TYPE OF WELL

OIL  
WELL ☐GAS  
WELL ☒

OTHER

SINGLE  
ZONE ☐MULTIPLE  
ZONE ☐

## 2. NAME OF OPERATOR

J. Gregory Merrion and Robert L. Bayless

## 3. ADDRESS OF OPERATOR

P.O. Box 507, Farmington, New Mexico 87401

## 4. LOCATION OF WELL (Report location clearly and in accordance with any State requirements.)\*

At surface

990 FNL and 990 FEL

At proposed prod. zone

Same

## 14. DISTANCE IN MILES AND DIRECTION FROM NEAREST TOWN OR POST OFFICE\*

## 15. DISTANCE FROM PROPOSED\*

LOCATION TO NEAREST  
PROPERTY OR LEASE LINE, FT.  
(Also to nearest drlg. unit line, if any)18. DISTANCE FROM PROPOSED LOCATION\*  
TO NEAREST WELL, DRILLING, COMPLETED,  
OR APPLIED FOR, ON THIS LEASE, FT.

## 16. NO. OF ACRES IN LEASE

## 19. PROPOSED DEPTH

2400 ft.

17. NO. OF ACRES ASSIGNED  
TO THIS WELL

160

## 20. ROTARY OR CABLE TOOLS

Rotary

## 21. ELEVATIONS (Show whether DF, RT, GR, etc.)

6844 ft. G.L.

## 22. APPROX. DATE WORK WILL START\*

As soon as Possible

## 23.

## PROPOSED CASING AND CEMENTING PROGRAM

SIZE OF HOLE	SIZE OF CASING	WEIGHT PER FOOT	SETTING DEPTH	QUANTITY OF CEMENT
9-5/8"	7"	23 lb./ft.	60'	20 sax
4-3/4"	2-7/8"	6.5 lb./ft.	2400'	150 sax

Will drill 9-5/8" hole to 60 ft. and set 60 ft. of 7", 23 lb./ft. casing with 20 sax cement. Will drill 4-3/4" hole to 2400 ft. and run logs. If appears productive will run 2400 ft. of 2-7/8", 6.5 lb./ft., J-55 casing and cement with 150 sax. Will perforate and stimulate as required. A 6"-900 double ram blowout preventer will be used.

Note: Gas under development agreement to Northwest Pipeline.

IN ABOVE SPACE DESCRIBE PROPOSED PROGRAM: If proposal is to deepen or plug back, give data on present productive zone and proposed new productive zone. If proposal is to drill or deepen directionally, give pertinent data on subsurface locations and measured and true vertical depths. Give blowout preventer program, if any.

## 24.

SIGNED

TITLE

Co-Owner

DATE

July 29, 1977

(This space for Federal or State office use)

PERMIT NO.

APPROVAL DATE

APPROVED BY

TITLE

DATE

CONDITIONS OF APPROVAL, IF ANY:

\*See Instructions On Reverse Side

**NEW MEXICO OIL CONSERVATION COMMISSION  
WELL LOCATION AND ACREAGE DEDICATION PLAT**

Form C-102  
Supersedes C-128  
Effective 1-1-65

All distances must be from the outer boundaries of the Section.

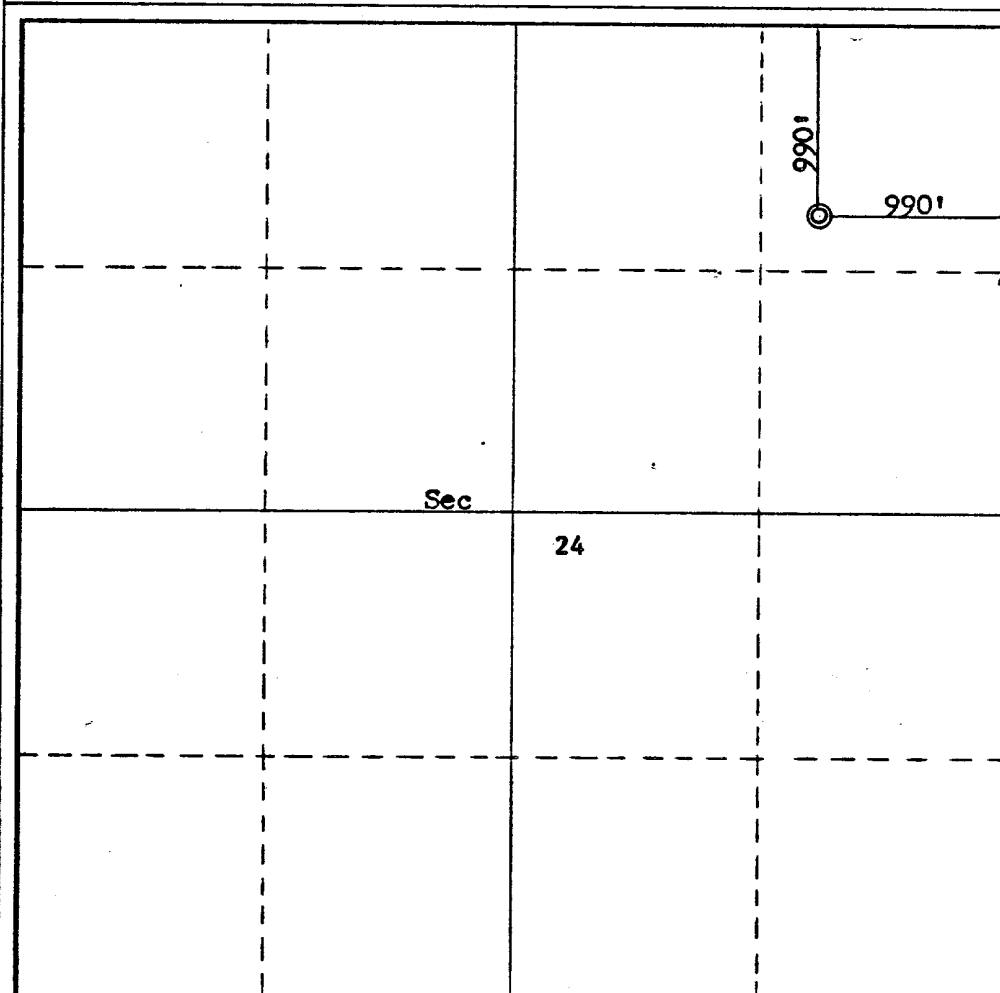
Operator <b>Merrion &amp; Bayless</b>			Lease <b>Jicarilla Contract 429</b>		Well No. <b>3</b>
Unit Letter <b>A</b>	Section <b>24</b>	Township <b>23N</b>	Range <b>5W</b>	County <b>Sandoval</b>	
Actual Footage Location of Well: <b>990</b> feet from the <b>North</b> line and <b>990</b> feet from the <b>East</b> line					
Ground Level Elev. <b>6844</b>	Producing Formation <b>Pictured Cliffs</b>		Pool <b>Ballard Picture Cliff</b>	Dedicated Acreage: <b>160</b> Acres	

1. Outline the acreage dedicated to the subject well by colored pencil or hachure marks on the plat below.
2. If more than one lease is dedicated to the well, outline each and identify the ownership thereof (both as to working interest and royalty).
3. If more than one lease of different ownership is dedicated to the well, have the interests of all owners been consolidated by communitization, unitization, force-pooling, etc?

☐ Yes    ☐ No    If answer is "yes," type of consolidation \_\_\_\_\_

If answer is "no," list the owners and tract descriptions which have actually been consolidated. (Use reverse side of this form if necessary.) \_\_\_\_\_

No allowable will be assigned to the well until all interests have been consolidated (by communitization, unitization, forced-pooling, or otherwise) or until a non-standard unit, eliminating such interests, has been approved by the Commission.



**CERTIFICATION.**

I hereby certify that the information contained herein is true and complete to the best of my knowledge and belief.

*Robert L. Bayless*

Name  
**Robert L. Bayless**

Position  
**Co-Owner**

Company  
**Merrion & Bayless**

Date  
**July 29, 1977**

I hereby certify that the well location shown on this plat was plotted from field notes of actual surveys made by me or under my supervision, and that the same is true and correct to the best of my knowledge and belief.

Date Surveyed  
**July 27, 1977**

Registered Professional Engineer  
and/or Land Surveyor

*Fred B. Kerr Jr.*  
**Fred B. Kerr Jr.**

Certificate No.  
**3950**

