

**NEW MEXICO OIL CONSERVATION COMMISSION
WELL LOCATION AND ACREAGE DEDICATION PLAT**

Form C-102
Supersedes C-128
Effective 1-1-65

All distances must be from the outer boundaries of the Section.

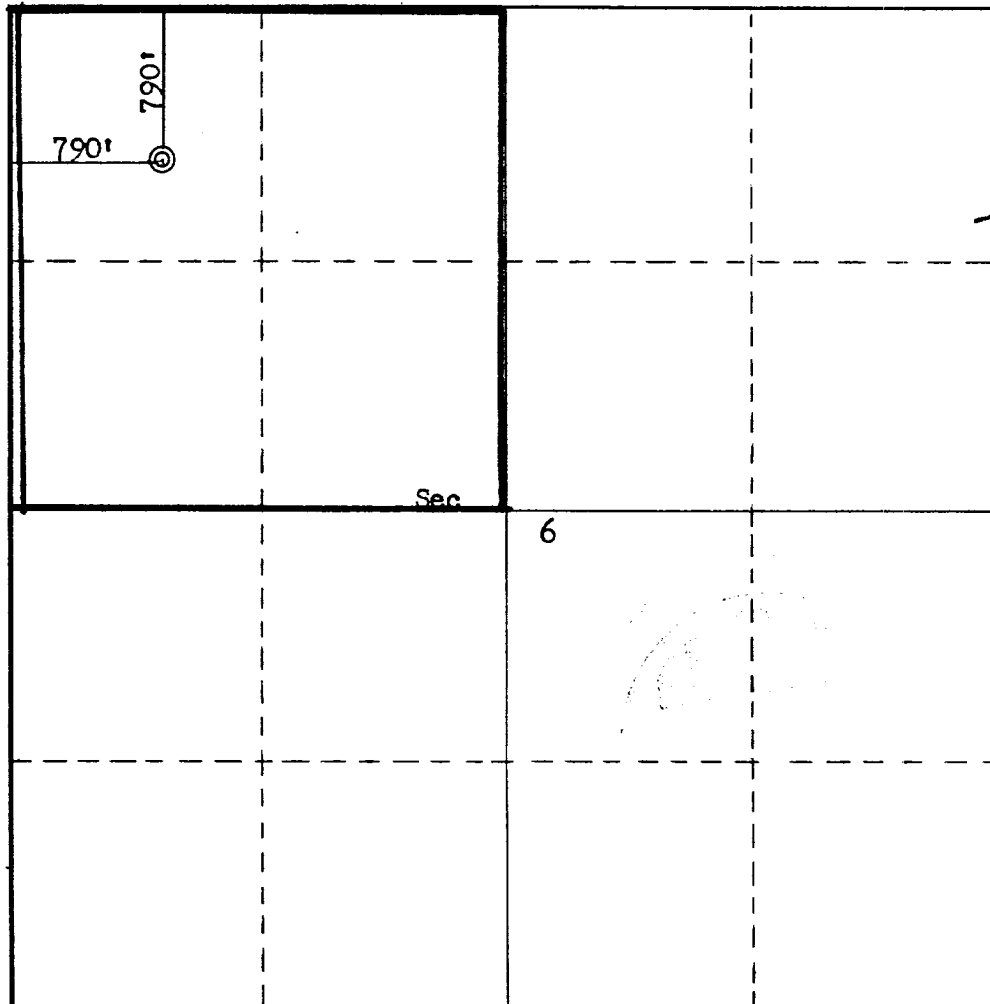
Operator L C. Energy, Inc.			Lease Federal		Well No. 2
Unit Letter D	Section 6	Township 20N	Range 2W	County Sandoval	
Actual Footage Location of Well: 790 feet from the North line and 790 feet from the West line					
Ground Level Elev. 7062	Producing Formation Mesa Verde		Pool Wildcat		Dedicated Acreage: 137.79 160 Acres

1. Outline the acreage dedicated to the subject well by colored pencil or hachure marks on the plat below.
2. If more than one lease is dedicated to the well, outline each and identify the ownership thereof (both as to working interest and royalty).
3. If more than one lease of different ownership is dedicated to the well, have the interests of all owners been consolidated by communitization, unitization, force-pooling, etc?

☐ Yes ☐ No If answer is "yes," type of consolidation _____

If answer is "no," list the owners and tract descriptions which have actually been consolidated. (Use reverse side of this form if necessary.) _____

No allowable will be assigned to the well until all interests have been consolidated (by communitization, unitization, forced-pooling, or otherwise) or until a non-standard unit, eliminating such interests, has been approved by the Commission.



CERTIFICATION

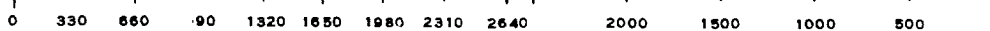
I hereby certify that the information contained herein is true and complete to the best of my knowledge and belief.

Ewell N. Walsh

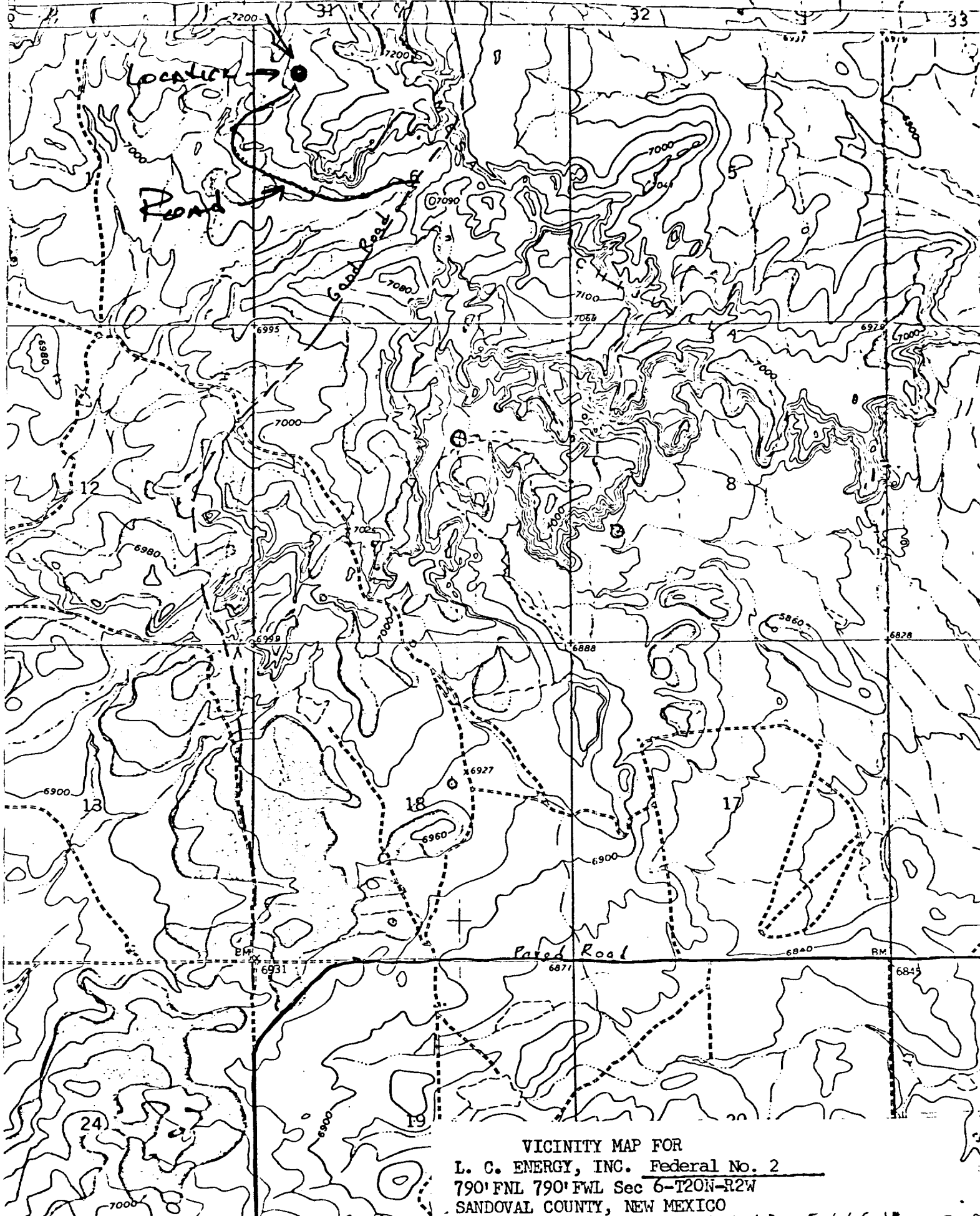
Name Ewell N. Walsh
Position President
Company Walsh Engr. & Prod. Corp.
Date 10-7-77

I hereby certify that the well location shown on this plat was plotted from field notes of actual surveys made by me or under my supervision, and that the same is true and correct to the best of my knowledge and belief.

Date Surveyed September 21, 1977
Registered Professional Engineer and/or Land Surveyor <i>Fred B. Kerr Jr.</i>
Certificate No. 3950



R 3 W R 2 W



VICINITY MAP FOR
L. C. ENERGY, INC. Federal No. 2
790' FNL 790' FWL Sec 6-T20N-R2W
SANDOVAL COUNTY, NEW MEXICO

DEVELOPMENT PLAN

L. C. Energy, Inc.

Federal No. 2

790' FNL, 790' FWL, Section 6-T20N, R2W
Sandoval County, New Mexico

1. Existing roads shown on attached plat.
2. Planned access from existing road is approximately 3000' to new location.
3. Location - 790' FNL, 790' FWL, Section 6-T20N, R2W
Sandoval County, New Mexico
4. No additional well is planned on this lease at this time.
5. Production equipment or storage facilities proposed for the well will be installed on location.
6. Water will be obtained from water source at Johnson Trading Post.
7. Waste materials will be buried on location or in reserve pit.
8. No permanent camp is planned. A trailer house will be used on location during drilling process.
9. No airstrip proposed.
10. See attached plat for layout.
11. Pits will be filled, location cleaned up, and area not in use for producing well will be reseeded.

DEVELOPMENT PLAN

Page 2 of 2

12. Lessee's or operator's representative.

Ewell N. Walsh: 325-8203; Radio Dispatch 325-1873, Car 620.
Address: P. O. Box 254, Farmington, New Mexico 87401

13: CERTIFICATION:

I hereby certify that I, or persons under my direct supervision, have inspected the proposed drillsite and access route; that I am familiar with the conditions which presently exist; that the statements made in this plan are, to the best of my knowledge, true and correct; and, that the work associated with the operations proposed herein will be performed by: _____

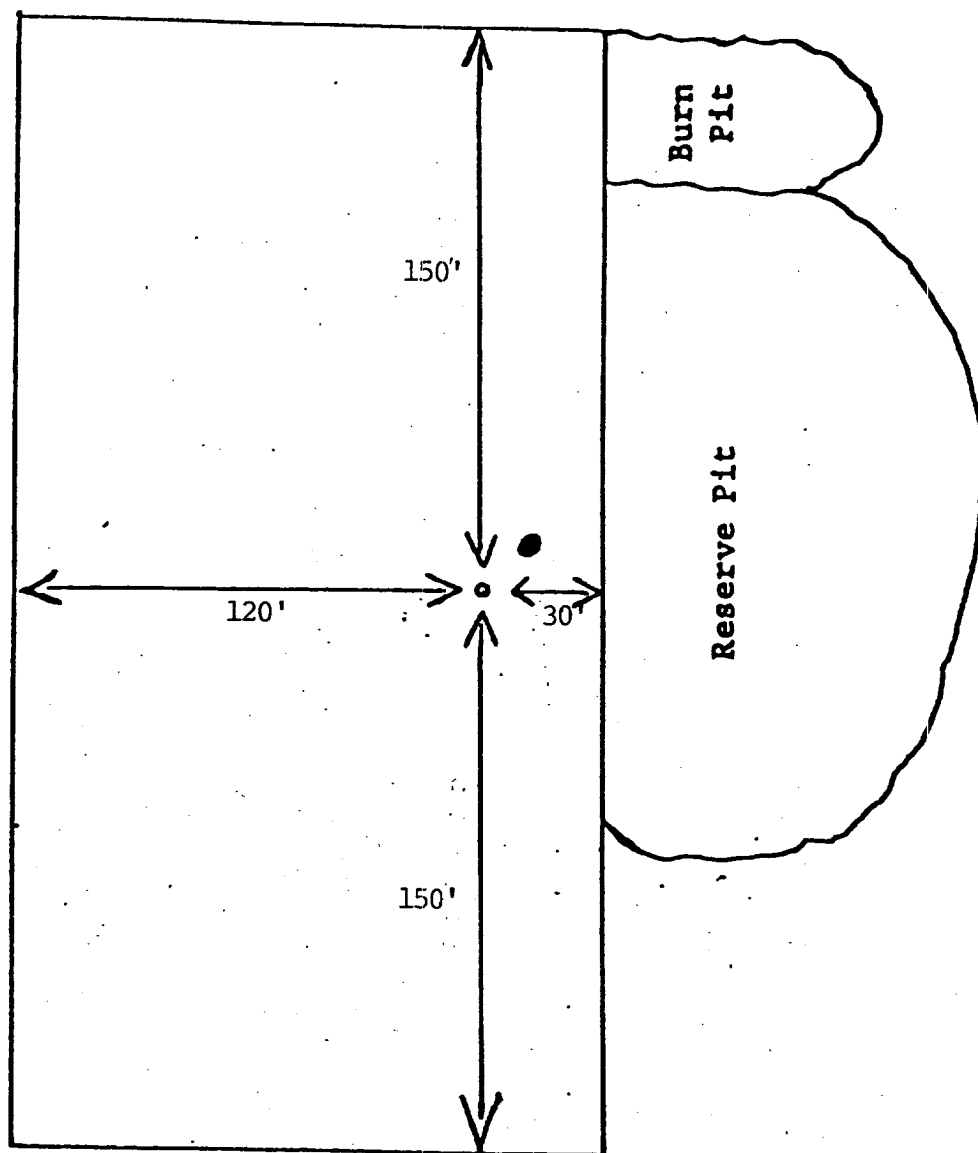
L. C. Energy, Inc.

and its contractors and subcontractors in conformity with this plan and the terms and conditions under which it is approved.



Ewell N. Walsh, P.E., President,
Walsh Engineering & Production
Corporation

Location Layout
L. C. Energy
Federal No. 2
790' FNL, 790' FWL, Section 6-T20N, R2W
Sandoval County, New Mexico



L. C. Energy Inc.
Federal No. 2
790' FNL, 790' FWL, Section 6-T20N-R2W
Sandoval County, New Mexico

Seven Point Well Control Program

1. Surface Casing.
See Application for Permit to Drill.
2. Spools and Flanges
 - A. Surface Casing - Schd., Series 600, 2000 psi W.P.
 - B. Production, Schd., Series 600, 2000 psi W.P.
 - C. Tubing Head - Series 600, 2000 psi W.P.
3. Intermediate Casing.
None
4. Blowout Preventers
Production Hole - 10" 2000 psi
Fill, kill and choke manifold - 5000 psi W.P.
5. Addition Equipment (If necessary)
 - A. Kelly Cock
 - B. Bit Float
 - C. Degasser
 - D. Pit Level Indicator
 - E. Sub with Valve for Drill Pipe.
6. Anticipated Bottom Hole Pressure.
800 psi.
7. Drilling Fluid.
Air