

UNITED STATES  
DEPARTMENT OF THE INTERIOR  
GEOLOGICAL SURVEY

30-043-20298

5. LEASE DESIGNATION AND SERIAL NO.

NM-8888

6. IF INDIAN, ALLOTTEE OR TRIBE NAME

7. UNIT AGREEMENT NAME

8. FARM OR LEASE NAME

Federal

9. WELL NO.

1

10. FIELD AND POOL, OR WILDCAT

Wildcat m/v

11. SEC., T., R., M., OR BLK.  
AND SURVEY OR AREA

Sec. 7-T20N-R2W

N. M. P. M.

12. COUNTY OR PARISH 13. STATE

Sandoval

N.M.

## APPLICATION FOR PERMIT TO DRILL, DEEPEN, OR PLUG BACK

1a. TYPE OF WORK

DRILL ☒DEEPEN ☐PLUG BACK ☐

b. TYPE OF WELL

OIL  
WELL ☐GAS  
WELL ☒

OTHER

SINGLE  
ZONE ☐MULTIPLE  
ZONE ☐

2. NAME OF OPERATOR

L.C. Energy, Inc.

3. ADDRESS OF OPERATOR

P.O. Box 5064, Wichita Falls, Texas 76307

4. LOCATION OF WELL (Report location clearly and in accordance with any State requirements.)\*

At surface

1850' FNL, 1850' FEL

At proposed prod. zone

Same

14. DISTANCE IN MILES AND DIRECTION FROM NEAREST TOWN OR POST OFFICE\*

N/A

15. DISTANCE FROM PROPOSED\*

LOCATION TO NEAREST  
PROPERTY OR LEASE LINE, FT.  
(Also to nearest drlg. unit line, if any)

1850'

16. NO. OF ACRES IN LEASE

-

17. NO. OF ACRES ASSIGNED  
TO THIS WELL

160 ✓

18. DISTANCE FROM PROPOSED LOCATION\*  
TO NEAREST WELL, DRILLING, COMPLETED,  
OR APPLIED FOR, ON THIS LEASE, FT.

-

19. PROPOSED DEPTH

3000'

20. ROTARY OR CABLE TOOLS

Rotary

21. ELEVATIONS (Show whether DF, RT, GR, etc.)

6954' GR

22. APPROX. DATE WORK WILL START\*

11-5-77

23.

## PROPOSED CASING AND CEMENTING PROGRAM

SIZE OF HOLE	SIZE OF CASING	WEIGHT PER FOOT	SETTING DEPTH	QUANTITY OF CEMENT
12 1/2	8 5/8	24.0	500	400 SXS
6 3/4	4 1/2	10.50	3000	To be determined

It is proposed to drill this well with rotary tools using mud for surface hole and air as circulating medium for 6 3/4" hole. Production casing will be cemented in such a manner to protect producing intervals.

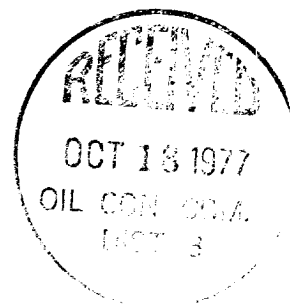
Estimated Formation Tops

Cliff House - 1050'

Point Lookout - 2800'

Mancos - 3000'

The NE/4 Section 7 is dedicated to this well.  
Natural gas produced from this well is not committed.



IN ABOVE SPACE DESCRIBE PROPOSED PROGRAM: If proposal is to deepen or plug back, give data on present productive zone and proposed new productive zone. If proposal is to drill or deepen directionally, give pertinent data on subsurface locations and measured and true vertical depths. Give blowout preventer program, if any.

24. FOR: L. C. Energy, Inc. President, Walsh Engineering  
SIGNED: Ewell N. Walsh, P.E. TITLE: & Production Corp. DATE: 10-7-77

(This space for Federal or State office use)

PERMIT NO. \_\_\_\_\_

APPROVAL DATE \_\_\_\_\_

APPROVED BY \_\_\_\_\_

TITLE \_\_\_\_\_

CONDITIONS OF APPROVAL, IF ANY:

RECEIVED

OCT 17 1977

\*See Instructions On Reverse Side

U. S. GEOLOGICAL SURVEY

**NEW MEXICO OIL CONSERVATION COMMISSION  
WELL LOCATION AND ACREAGE DEDICATION PLAT**

Form C-102  
Supersedes C-128  
Effective 1-1-65

All distances must be from the outer boundaries of the Section.

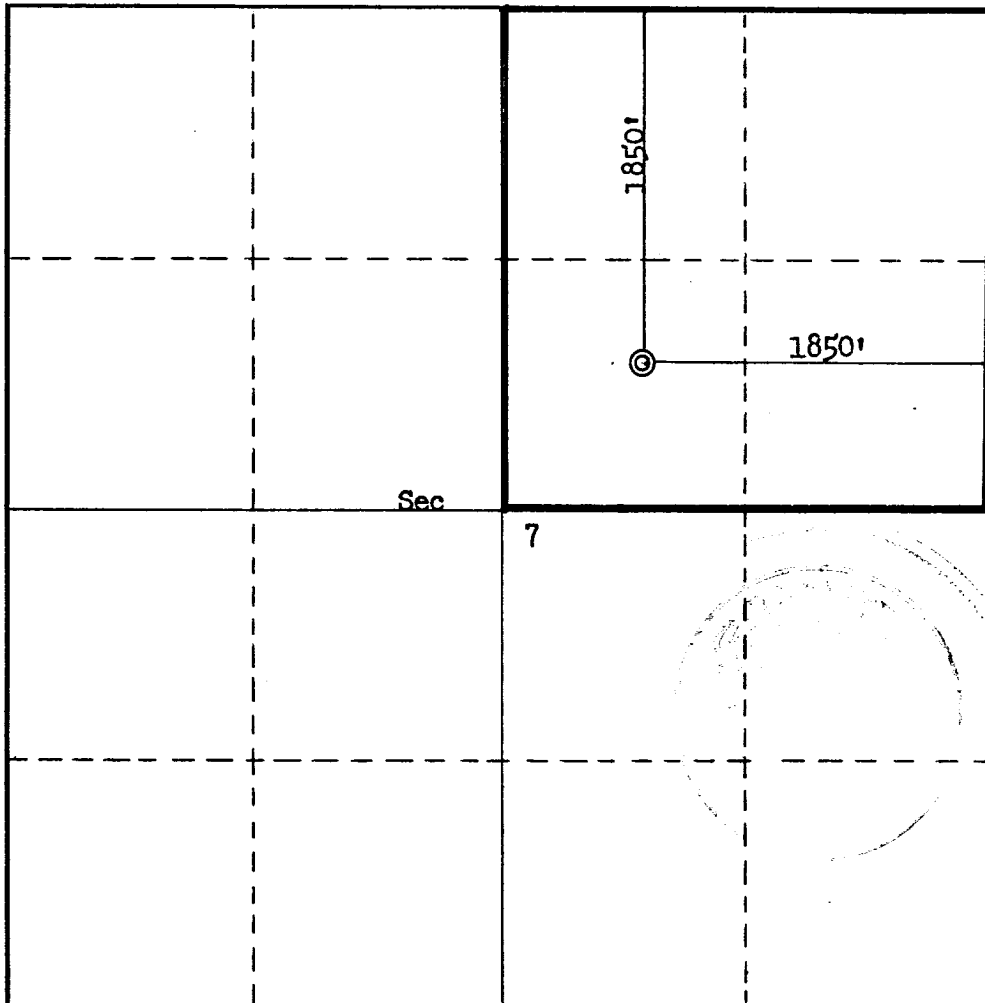
Operator <b>L. C. Energy, Inc.</b>			Lease <b>Federal</b>		Well No. <b>1</b>
Unit Letter <b>G</b>	Section <b>7</b>	Township <b>20N</b>	Range <b>2W</b>	County <b>Sandoval</b>	
Actual Footage Location of Well:					
<b>1850</b> feet from the <b>North</b> line and		<b>1850</b> feet from the <b>East</b> line			
Ground Level Elev. <b>6954</b>	Producing Formation <b>Mesa Verde</b>	Pool <b>Wildcat</b>		Dedicated Acreage: <b>160</b> Acres	

1. Outline the acreage dedicated to the subject well by colored pencil or hachure marks on the plat below.
2. If more than one lease is dedicated to the well, outline each and identify the ownership thereof (both as to working interest and royalty).
3. If more than one lease of different ownership is dedicated to the well, have the interests of all owners been consolidated by communitization, unitization, force-pooling, etc?

☐ Yes   ☐ No   If answer is "yes," type of consolidation \_\_\_\_\_

If answer is "no," list the owners and tract descriptions which have actually been consolidated. (Use reverse side of this form if necessary.) \_\_\_\_\_

No allowable will be assigned to the well until all interests have been consolidated (by communitization, unitization, forced-pooling, or otherwise) or until a non-standard unit, eliminating such interests, has been approved by the Commission.



**CERTIFICATION**

I hereby certify that the information contained herein is true and complete to the best of my knowledge and belief.

*Ewell N. Walsh*

Name  
**Ewell N. Walsh, P.E.**

Position  
**President**

Company  
**Walsh Engr. & Prod. Corp.**

Date  
**10-7-77**

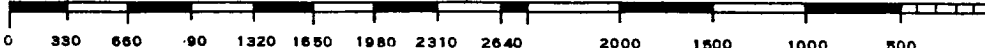
I hereby certify that the well location shown on this plat was plotted from field notes of actual surveys made by me or under my supervision, and that the same is true and correct to the best of my knowledge and belief.

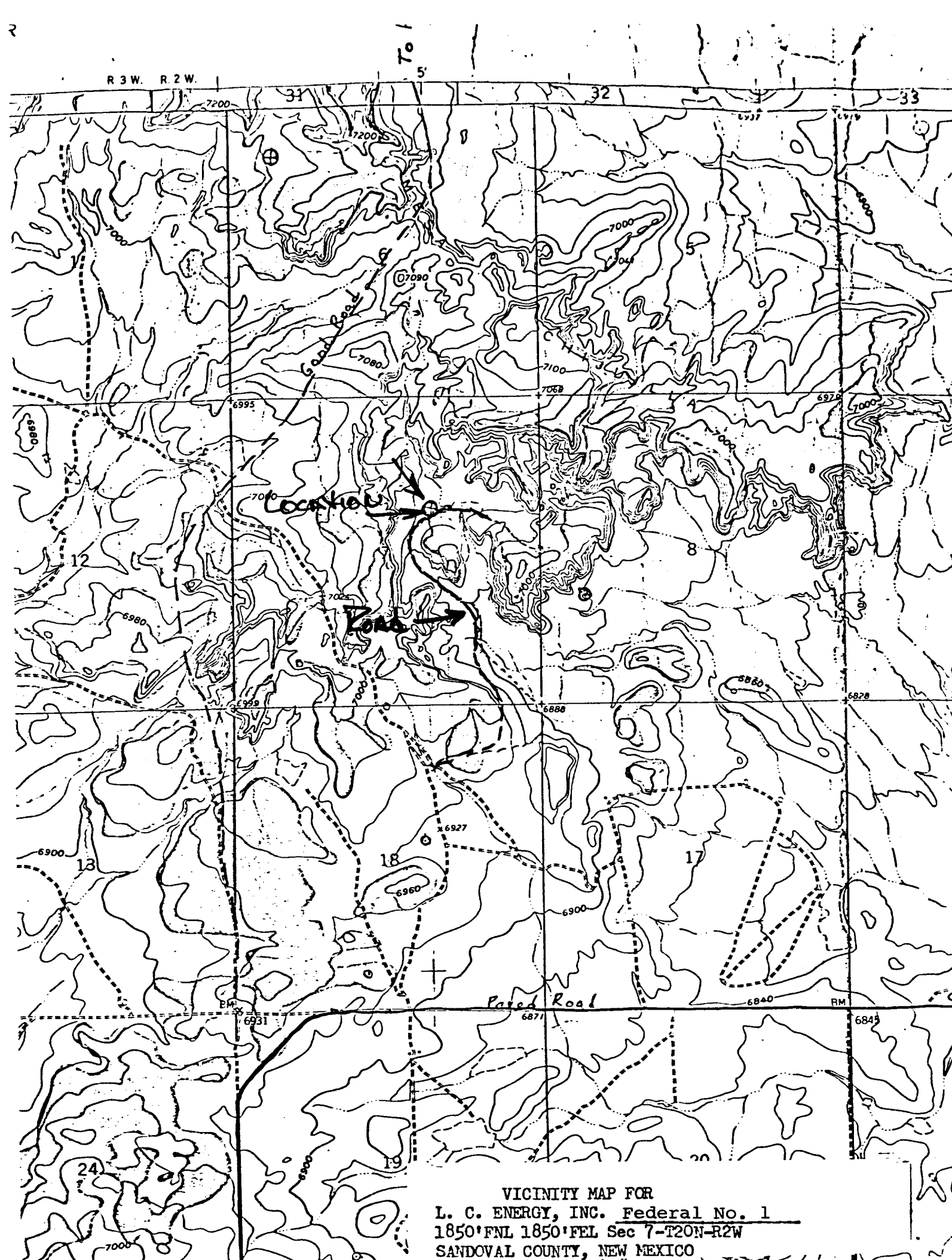
Date Surveyed  
**September 21, 1977**

Registered Professional Engineer and/or Land Surveyor

*Fred B. Kern Jr.*  
**Fred B. Kern Jr.**

Certificate No.  
**3950**





DEVELOPMENT PLAN

L. C. ENERGY  
FEDERAL NO. 1  
1850'FNL, 1850'FEL Sec. 7-T20N-R2W  
SANDOVAL COUNTY, NEW MEXICO

1. Existing roads shown on attached plat.
2. Planned access from existing road is approximately 2000' to new location.
3. Location -  
See above
4. One additional well is planned on this lease at this time.
5. Production equipment or storage facilities proposed for the well will be installed on location.
6. Water will be obtained from water source at Johnson Trading Post
7. Waste materials will be buried on location or in reserve pit.
8. No permanent camp is planned. A trailer house will be used on location during drilling process.
9. No airstrip proposed.
10. See attached plat for layout.
11. Pits will be filled, location cleaned up, and area not in use for producing well will be reseeded.

12. Lessee's or operator's representative.

Ewell N. Walsh: 325-8203; Radio Dispatch 325-1873, Car 620.  
Address: P. O. Box 254, Farmington, New Mexico 87401

13: CERTIFICATION:

I hereby certify that I, or persons under my direct supervision, have inspected the proposed drillsite and access route; that I am familiar with the conditions which presently exist; that the statements made in this plan are, to the best of my knowledge, true and correct; and, that the work associated with the operations proposed herein will be performed by: \_\_\_\_\_

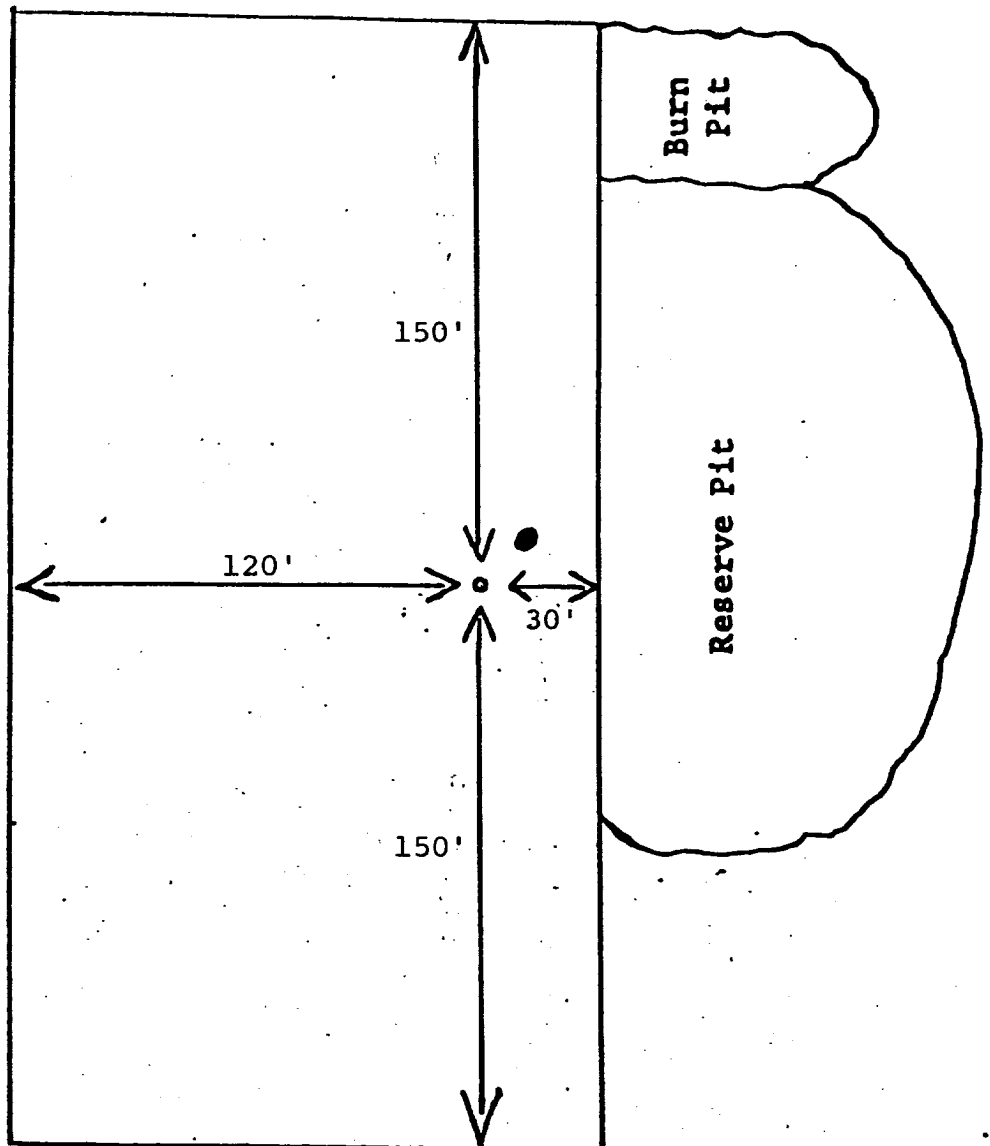
L. C. Energy Inc.

and its contractors and subcontractors in conformity with this plan and the terms and conditions under which it is approved.



Ewell N. Walsh, P.E., President,  
Walsh Engineering & Production  
Corporation

LOCATION LAYOUT  
L. C. ENERGY  
FEDERAL NO. 1  
1850'FNL, 1850'FEL Sec. 7-T20N-R2W  
Sandoval County, New Mexico



L. C. ENERGY  
FEDERAL NO. 1  
1850'FNL, 1850'FEL Sec. 7-T20N-R2W  
Sandoval County, New Mexico

Seven Point Well Control Program

1. Surface Casing.  
See Application for Permit to Drill.
2. Spools and Flanges
  - A. Surface Casing - Schd. Series 600, 2000 psi W.P.
  - B. Production, Schd. Series 600, 2000 psi W.P.
  - C. Tubing Head - Series 600, 2000 psi W.P.
3. Intermediate Casing.  
None
4. Blowout Preventers  
Production Hole - 10" 2000 psi  
Fill, kill and choke manifold - 5000 psi W.P.
5. Addition Equipment (If necessary)
  - A. Kelly Cock
  - B. Bit Float
  - C. Degasser
  - D. Pit Level Indicator
  - E. Sub with Valve for Drill Pipe.
6. Anticipated Bottom Hole Pressure.  
800 psi.
7. Drilling Fluid.  
Air.