

UNITED STATES  
DEPARTMENT OF THE INTERIOR  
GEOLOGICAL SURVEY

## APPLICATION FOR PERMIT TO DRILL, DEEPEN, OR PLUG BACK

## 1a. TYPE OF WORK

DRILL ☒DEEPEN ☐PLUG BACK ☐

## b. TYPE OF WELL

OIL  
WELL ☐GAS  
WELL ☐OTHER ☐SINGLE  
ZONE ☐MULTIPLE  
ZONE ☐

## 2. NAME OF OPERATOR

Dome Petroleum Corporation

3. ADDRESS OF OPERATOR Minerals Management Inc., Suite 105,  
501 Airport Drive, Farmington, New Mexico 87401

## 4. LOCATION OF WELL (Report location clearly and in accordance with any State requirements.)\*

At surface  
990' FSL, 2100' FEL, SEC. 19, T21N, R5W

At proposed prod. zone

## 14. DISTANCE IN MILES AND DIRECTION FROM NEAREST TOWN OR POST OFFICE\*

15 miles southeast of Counselors Trading Post

## 15. DISTANCE FROM PROPOSED\*

LOCATION TO NEAREST  
PROPERTY OR LEASE LINE, FT.  
(Also to nearest drlg. unit line, if any)

990

## 16. NO. OF ACRES IN LEASE

160

17. NO. OF ACRES ASSIGNED  
TO THIS WELL

40

## 18. DISTANCE FROM PROPOSED LOCATION\*

TO NEAREST WELL, DRILLING, COMPLETED,  
OR APPLIED FOR, ON THIS LEASE, FT.

--

## 19. PROPOSED DEPTH

6650

## 20. ROTARY OR CABLE TOOLS

Rotary

## 21. ELEVATIONS (Show whether DF, RT, GR, etc.)

7007' GR

## 22. APPROX. DATE WORK WILL START\*

November 30, 1977

## 23.

## PROPOSED CASING AND CEMENTING PROGRAM

SIZE OF HOLE	SIZE OF CASING	WEIGHT PER FOOT	SETTING DEPTH	QUANTITY OF CEMENT
13 1/4	9 5/8	36	200	200 sx
8 3/4	7	20, 23, 26	6650	to surface by caliper log

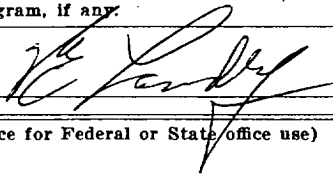
Dome Petroleum Corporation (Operator) proposes to drill a Jurassic test to 6650'. Completion will be determined from Logs. A Series 900 (3000 psi) WP Blowout Preventer will be used. The BOP will be tested to 500 psi before drilling surface plug. The geologic name of the surface formation is Mesa Verde. Pertinent formation tops are estimated as Point Lookout 3200', Gallup 4180', Graneros 5225', Dakota 5400', Entrada 6365'. Drill stem test will be taken where necessary for evaluation. No abnormal pressures or temperatures are anticipated. Drilling should require approximately 15 days.

*Confidential*

IN ABOVE SPACE DESCRIBE PROPOSED PROGRAM: If proposal is to deepen or plug back, give data on present productive zone and proposed new productive zone. If proposal is to drill or deepen directionally, give pertinent data on subsurface locations and measured and true vertical depths. Give blowout preventer program, if any.

## 24.

SIGNED



Area Manager

TITLE Minerals Management Inc. DATE 11-3-77

(This space for Federal or State office use)

PERMIT NO.

APPROVAL DATE

APPROVED BY

TITLE

DATE

CONDITIONS OF APPROVAL, IF ANY:

*OK*

\*See Instructions On Reverse Side

30-043-20303

## 5. LEASE DESIGNATION AND SERIAL NO.

NOO-C-14-20-5796

## 6. IF INDIAN, ALLOTTEE OR TRIBE NAME

Navajo

## 7. UNIT AGREEMENT NAME

## 8. FARM OR LEASE NAME

Navajo Allotted 19-21-5

## 9. WELL NO.

1

## 10. FIELD AND POOL, OR WILDCAT

Wildcat - Entrada

11. SEC., T., R., M., OR BLK.  
AND SURVEY OR AREASec. 19, T21N, R5W  
NMPM

## 12. COUNTY OR PARISH

Sandoval

## 13. STATE

N.M.

**NEW MEXICO OIL CONSERVATION COMMISSION  
WELL LOCATION AND ACREAGE DEDICATION PLAT**

Form C-102  
Supersedes C-128  
Effective 1-1-65

All distances must be from the outer boundaries of the Section.

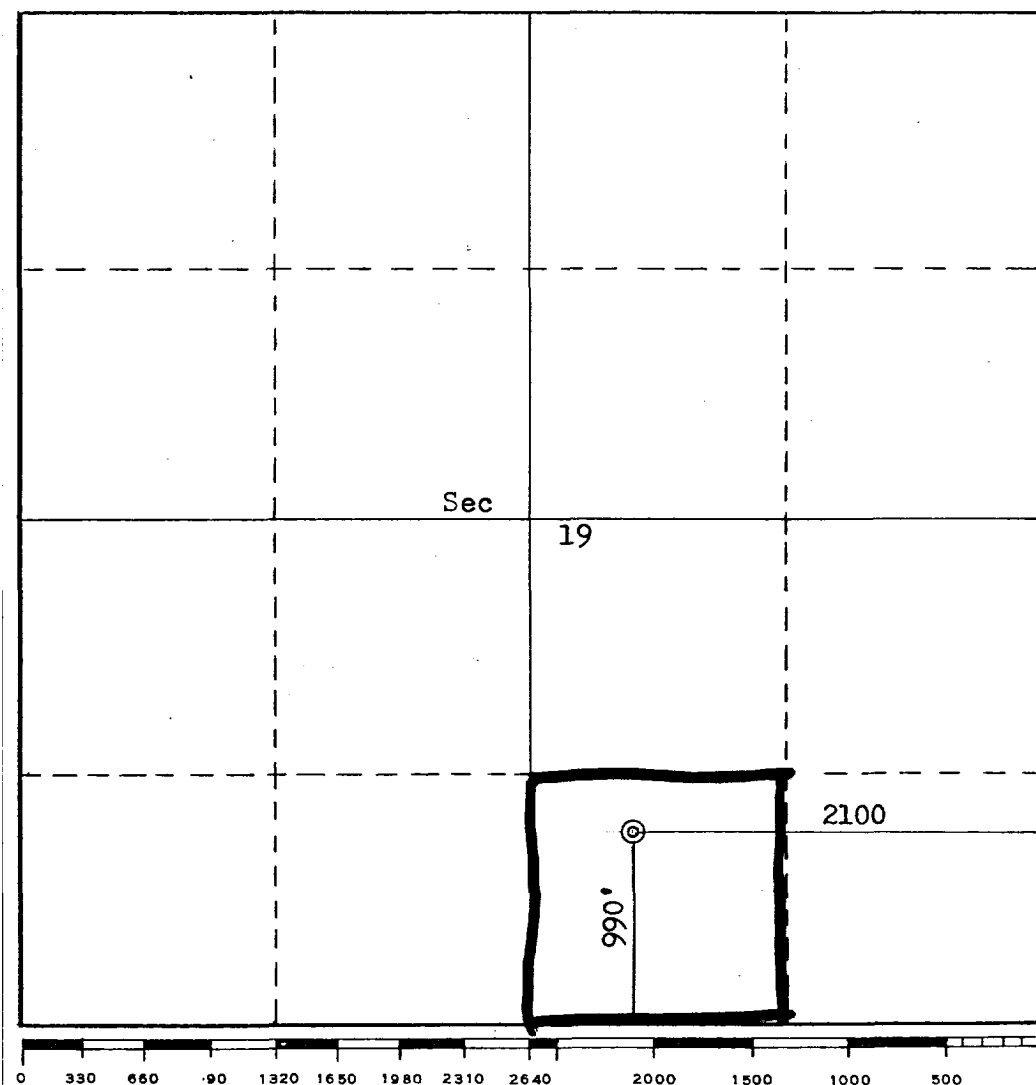
Operator <b>Dome Petroleum Corporation</b>			Lease <b>Navajo Allotted 19-21-5</b>		Well No. <b>1</b>
Unit Letter <b>0</b>	Section <b>19</b>	Township <b>21N</b>	Range <b>5W</b>	County <b>Sandoval</b>	
Actual Footage Location of Well: <b>990</b> feet from the <b>South</b> line and <b>2100</b> feet from the <b>East</b> line					
Ground Level Elev. <b>7007</b>	Producing Formation <b>Entrada</b>		Pool <b>Wildcat</b>		Dedicated Acreage: <b>40</b> Acres

1. Outline the acreage dedicated to the subject well by colored pencil or hachure marks on the plat below.
2. If more than one lease is dedicated to the well, outline each and identify the ownership thereof (both as to working interest and royalty).
3. If more than one lease of different ownership is dedicated to the well, have the interests of all owners been consolidated by communitization, unitization, force-pooling, etc?

☐ Yes   ☐ No   If answer is "yes," type of consolidation \_\_\_\_\_

If answer is "no," list the owners and tract descriptions which have actually been consolidated. (Use reverse side of this form if necessary.) \_\_\_\_\_

No allowable will be assigned to the well until all interests have been consolidated (by communitization, unitization, forced-pooling, or otherwise) or until a non-standard unit, eliminating such interests, has been approved by the Commission.



**CERTIFICATION**

*I hereby certify that the information contained herein is true and complete to the best of my knowledge and belief.*

Name  
**W. E. Landry**

Position  
**Area Manager**

Company  
**Minerals Management Inc.**

Date  
**11-3-77**

*I hereby certify that the well location shown on this plat was plotted from field notes of actual surveys made by me or under my supervision, and that the same is true and correct to the best of my knowledge and belief.*

Date Surveyed  
**October 24, 1977**

Registered Professional Engineer and/or Land Surveyor  
**Fred B. Kerr Jr.**

Certificate No.  
**3950**