

UNITED STATES
DEPARTMENT OF THE INTERIOR
BUREAU OF LAND MANAGEMENT

APPLICATION FOR PERMIT TO DRILL, DEEPEN, OR PLUG BACK

1a. TYPE OF WORK
 DRILL DEEPEN PLUG BACK

b. TYPE OF WELL
 OIL WELL GAS WELL OTHER SINGLE ZONE MULTIPLE ZONE

2. NAME OF OPERATOR
 Merrion Oil & Gas Corporation

3. ADDRESS OF OPERATOR
 P. O. Box 840, Farmington, NM 87499

4. LOCATION OF WELL (Report location clearly and in accordance with any State requirements.)*
 At surface
 990' FNL & 2160' FWL
 At proposed prod. zone

5. LEASE DESIGNATION AND SERIAL NO.
 NM 1696

6. IF INDIAN, ALLOTTEE OR TRIBE NAME

7. URBAN AGREEMENT NAME

8. FARM OR LEASE NAME
 Boling Federal

9. WELL NO.
 8-22

10. FIELD AND POOL, OR WILDCAT
 Undesignated Mesaverde

11. SEC., T., R., M., OR BLK. AND SURVEY OR AREA
 Sec 22, T19N, R3W

12. COUNTY OR PARISH
 Sandoval

13. STATE
 NM

14. DISTANCE IN MILES AND DIRECTION FROM NEAREST TOWN OR POST OFFICE*

15. DISTANCE FROM PROPOSED* LOCATION TO NEAREST PROPERTY OR LEASE LINE, FT. (Also to nearest drig. unit line, if any)

16. NO. OF ACRES IN LEASE
 320

17. NO. OF ACRES ASSIGNED TO THIS WELL
 40

18. DISTANCE FROM PROPOSED LOCATION* TO NEAREST WELL, DRILLING, COMPLETED, OR APPLIED FOR, ON THIS LEASE, FT.

19. PROPOSED DEPTH

20. ROTARY OR CABLE TOOLS

21. ELEVATIONS (Show whether DF, ET, GR, etc.)
 6869' GL

22. APPROX. DATE WORK WILL START*
 12/90

23. PROPOSED CASING AND CEMENTING PROGRAM

SIZE OF HOLE	SIZE OF CASING	WEIGHT PER FOOT	SETTING DEPTH	QUANTITY OF CEMENT

A sundry dated 5/8/90 was approved to P&A the well. Due to the recent success of a Mesaverde recompletion in the area, we would like to perforate and test one Mesaverde zone prior to plugging the well. If the zone is commercial, we will complete and produce the well. If the zone is uncommercial, we will proceed with the P&A as planned.

Attached is a procedure for your approval. Please contact Mr. George Sharpe at 505 - 327-9801 with questions.

RECEIVED
DEC 17 1990

OIL CON. DIV
DIST. 3

IN ABOVE SPACE DESCRIBE PROPOSED PROGRAM: If proposal is to deepen or plug back, give data on present production and proposed productive zone. If proposal is to drill or deepen directionally, give pertinent data on subsurface locations and measured and true depths. Give blowout preventer program, if any.

24. SIGNED George F. Sharpe TITLE Engineer DATE 12-3-90

(This space for Federal or State office use)

PERMIT NO. _____ APPROVAL DATE 12-12-90
 APPROVED BY Shirley Mondy Acting AREA MANAGER
 CONDITIONS OF APPROVAL, IF ANY RIO PUERCO-RESOURCE AREA

Notify this office 24 hours prior to plugging (761-4504) **NMOCD**
 cc: 6 BLM
 1 Well File
 1 Acct, Martha
 1 Land, Crystal
 *See Instructions On Reverse Side

OIL CONSERVATION DIVISION
P.O. Box 2088
Santa Fe, New Mexico 87504-2088

Submit to Appropriate
District Office
State Lease - 4 copies
Fee Lease - 3 copies

DISTRICT I
P.O. Box 1980, Hobbs, NM 88240

DISTRICT II
P.O. Drawer DD, Artesia, NM 88210

DISTRICT III
1000 Rio Brazos Rd., Aztec, NM 87410

WELL LOCATION AND ACREAGE DEDICATION PLAT
All Distances must be from the outer boundaries of the section

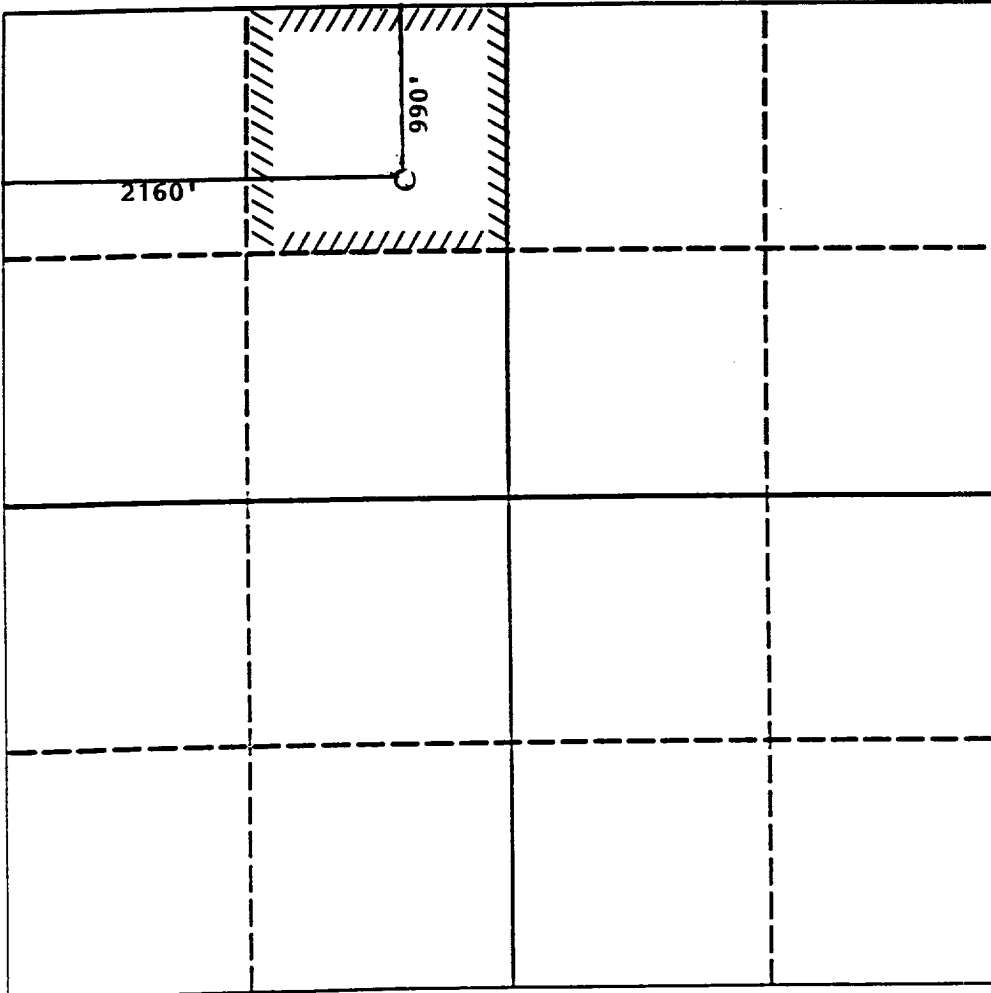
Operator Merrion Oil & Gas Corporation			Lease Boling Federal		Well No. 8-22 8
Unit Letter C	Section 22	Township 19N	Range 3W	County NMPM Sandoval	
Actual Footage Location of Well: 990 feet from the North line and 2160 feet from the West line					
Ground level Elev. 6869'	Producing Formation Mesaverde		Pool Undesignated Mesaverde		Dedicated Acreage: 40 Acres

- Outline the acreage dedicated to the subject well by colored pencil or hectare marks on the plat below.
- If more than one lease is dedicated to the well, outline each and identify the ownership thereof (both as to working interest and royalty).
- If more than one lease of different ownership is dedicated to the well, have the interest of all owners been consolidated by communitization, unitization, force-pooling, etc.?

Yes No If answer is "yes" type of consolidation _____

If answer is "no" list the owners and tract descriptions which have actually been consolidated. (Use reverse side of this form if necessary.) _____

No allowable will be assigned to the well until all interests have been consolidated (by communitization, unitization, forced-pooling, or otherwise) or until a non-standard unit, eliminating such interest, has been approved by the Division.



OPERATOR CERTIFICATION

I hereby certify that the information contained herein is true and complete to the best of my knowledge and belief.

Signature: *George F. Sharpe*

Printed Name: **George F. Sharpe**

Position: **Engineer**

Company: **Merrion Oil & Gas Corp.**

Date: **12-3-90**

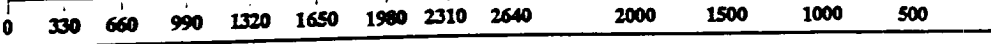
SURVEYOR CERTIFICATION

I hereby certify that the well location shown on this plat was plotted from field notes of actual surveys made by me or under my supervision, and that the same is true and correct to the best of my knowledge and belief.

Date Surveyed: _____

Signature & Seal of Professional Surveyor: _____

Certificate No.: _____



MERRION OIL & GAS CORPORATION

BOLING FEDERAL NO. 8-22

RECOMPLETION/PLUG & ABANDON PROCEDURE

LOCATION: 990' FNL & 2160' FWL ELEVATION: 6869' GL
Section 22, T19N, R3W
Sandoval County, New Mexico

PREPARED BY: George F. Sharpe DATE: 12/03/90

PLUGBACK:

1. MIRU. ND WH. NU BOPs. POOH with 95 jts of 2-7/8" tbg and Reda Pump and motor.
2. RIH with workstring to PBTD @ 5327'. Spot cement plug from 5327'-5200' across Entrada perms (5306'-5313') and Entrada top (5304') with 25 sx neat G. (1.15 cu.ft./sx). WOC.
3. Tag cement. Roll hole with 9.0 ppg mud. Pull to 4621'. Set 25 sack cement plug from 4621'-4495' across Morrison top (4571'). Pull to 2902'. Set 25 sack cement plug from 2902' to 2775' across Gallup top (2852'). Pull to 1950'. Set 25 sack cement plug from 1950' to 1823' across DV tool (1887').
4. WOC. Tag cement top. Pressure test casing to 500 psi. Roll hole clean with water. Swab well down to 1200'.

MESAVERDE TEST:

5. RU Wireline. Run Gamma Ray Correlation log from 1823' to 1000'. RIH and perf 1740'-1748' with 4 SPF at 120' with 4" casing guns (Formation Density Log). POOH and RD Wireline.
6. Swab test Mesaverde. If commercial, stimulate and complete as specified at a later date. If uncommercial, continue with P&A.

BOLING FEDERAL 8-22
PAGE TWO
DECEMBER 3, 1990

P&A:

7. RIH with tubing to 1800'. Set 25 sx cement plug 1800' to 1673' across perforations. WOC.
8. Tag cement. Roll hole with 9.0 ppg mud. Pull to 554'. Set 25 sx cement plug 554'-427' across Mesaverde top (504') and surface casing shoe (491'). Pull to 50'. Set 10 sx plug to surface. Pump 10 sx plug down casing annulus.
9. RD MOL. Cut off casing. Install P&A marker. Restore location.

GFS/eg

APPROVED: _____

DATE: _____

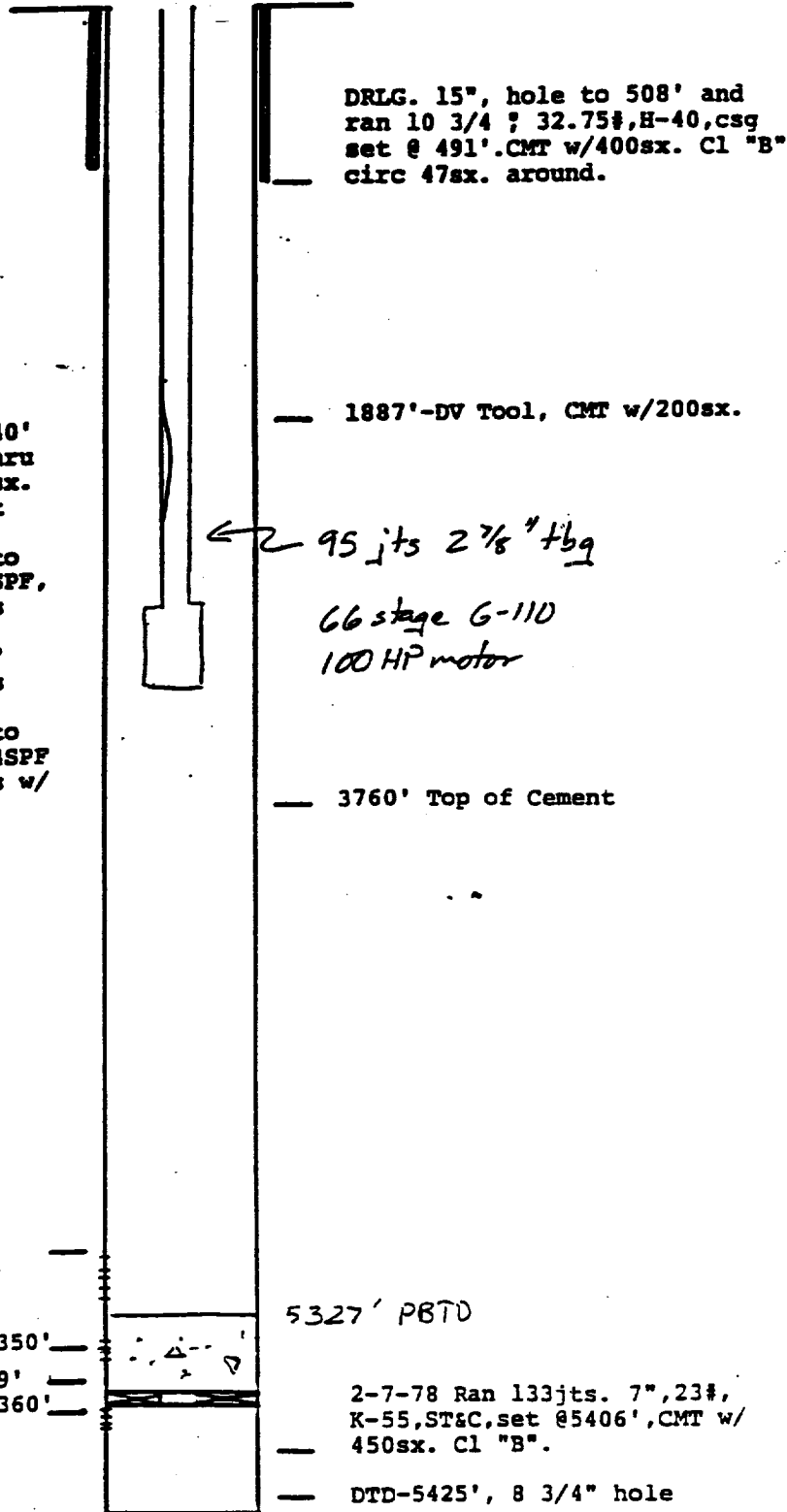
Date: 6-22-78

PEX Lewis Corporation
LEVELAND Dist.
Schematic Diagram

WELL NAME: BOLING FEDERAL #8
D- 5425'
BTD- 5327'
PERFS- 5306-11

Tops: Mesquite 504'
Gallup 2052'
Dakota 4292'
Morrison 4571'
Entrada - 5304'

NOTE 5-24-78, Perf 5350', 45, 40'
& set PKR @ 5325', circ. thru
5308-13' perfs. Disp. 50sx.
Cl "B", CMT to 5100', & put
away.
5-26-78 Drlg. CMT 5265' to
5327', Perf. 5306'-11', 4SPF,
20holes. Breakdown perfs
w/120bbls lease crude.
6-1-78, Spot 35sx. Cl "B"
CMT @ 5327', squeeze 15sx
away.
6-2-78, Drlg. CMT 5227' to
5327', Re-Perf 5306'-11' 4SPF
20holes, Breakdown perfs w/
75bbls lease crude.



Entrada
1st-Perfs @ 5308+13'
2nd-Perfs @ 5306+11'

4-way squeeze holes @ 5350'
5345, 5340'
Hal. CMT Retainer @ 5359'
4-way squeeze holes @ 5360'
(could not pump into)

5327' PBTD
2-7-78 Ran 133jts. 7", 23#,
K-55, ST&C, set @ 5406', CMT w/
450sx. Cl "B".
DTD-5425', 8 3/4" hole

RLT

7" Capacity - .2273 B³/ft