

UNITED STATES
DEPARTMENT OF THE INTERIOR
GEOLOGICAL SURVEY

APPLICATION FOR PERMIT TO DRILL, DEEPEN, OR PLUG BACK

1a. TYPE OF WORK

DRILL ☒DEEPEN ☐PLUG BACK ☐

b. TYPE OF WELL

OIL
WELL ☐GAS
WELL ☒

OTHER

SINGLE
ZONE ☐MULTIPLE
ZONE ☐

2. NAME OF OPERATOR

Dome Petroleum Corp

3. ADDRESS OF OPERATOR %Minerals Management Inc., Suite 105,
501 Airport Drive, Farmington, New Mexico 874014. LOCATION OF WELL (Report location clearly and in accordance with any State requirements.)*
At surfaceJ 1840' FSL, 1520' FEL, SEC. 24, T22N, R7W
At proposed prod. zone

14. DISTANCE IN MILES AND DIRECTION FROM NEAREST TOWN OR POST OFFICE*

12 miles southwest of Counselor Trading Post

15. DISTANCE FROM PROPOSED*

LOCATION TO NEAREST
PROPERTY OR LEASE LINE, FT.
(Also to nearest drlg. unit line, if any)

1520'

16. NO. OF ACRES IN LEASE

1923.34

17. NO. OF ACRES ASSIGNED
TO THIS WELL

160 ✓

18. DISTANCE FROM PROPOSED LOCATION*
TO NEAREST WELL, DRILLING, COMPLETED,
OR APPLIED FOR, ON THIS LEASE, FT.19. PROPOSED DEPTH
2500'

20. ROTARY OR CABLE TOOLS

Rotary

21. ELEVATIONS (Show whether DF, RT, GR, etc.)

6839' GR

22. APPROX. DATE WORK WILL START*

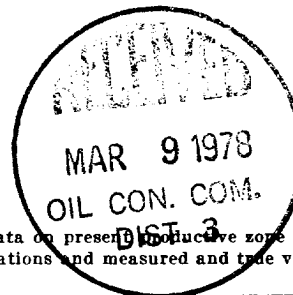
April 15, 1978

23.

PROPOSED CASING AND CEMENTING PROGRAM

SIZE OF HOLE	SIZE OF CASING	WEIGHT PER FOOT	SETTING DEPTH	QUANTITY OF CEMENT
12 1/4	8 5/8	23.75	90	100 sx
6 3/4	4 1/2	10.5	2500	To surface by caliper log

Operator proposes to drill an upper cretaceous test to 2500'. Completion will be determined from logs. A Series 900 (3000 psi WP) blowout preventer will be used. The BOP will be tested to 500 psi before drilling surface plug. Pertinent formation tops are estimated as Pictured Cliffs at 1150' and the Point Lookout at 1500'. Drill stem test will be taken when necessary for evaluation. No abnormal pressures or temperatures are anticipated. Drilling should require approximately 3 days.



IN ABOVE SPACE DESCRIBE PROPOSED PROGRAM: If proposal is to deepen or plug back, give data on present productive zone and proposed new productive zone. If proposal is to drill or deepen directionally, give pertinent data on subsurface locations and measured and true vertical depths. Give blowout preventer program, if any.

24.

SIGNED

TITLE

W. E. Landry
Area Manager

DATE

3-3-78

(This space for Federal or State office use)

PERMIT NO.

APPROVAL DATE

APPROVED BY

TITLE

DATE

CONDITIONS OF APPROVAL, IF ANY:

*See Instructions On Reverse Side

**NEW MEXICO OIL CONSERVATION COMMISSION
WELL LOCATION AND ACREAGE DEDICATION PLAT**

Form C-102
Supersedes C-128
Effective 1-1-65

All distances must be from the outer boundaries of the Section.

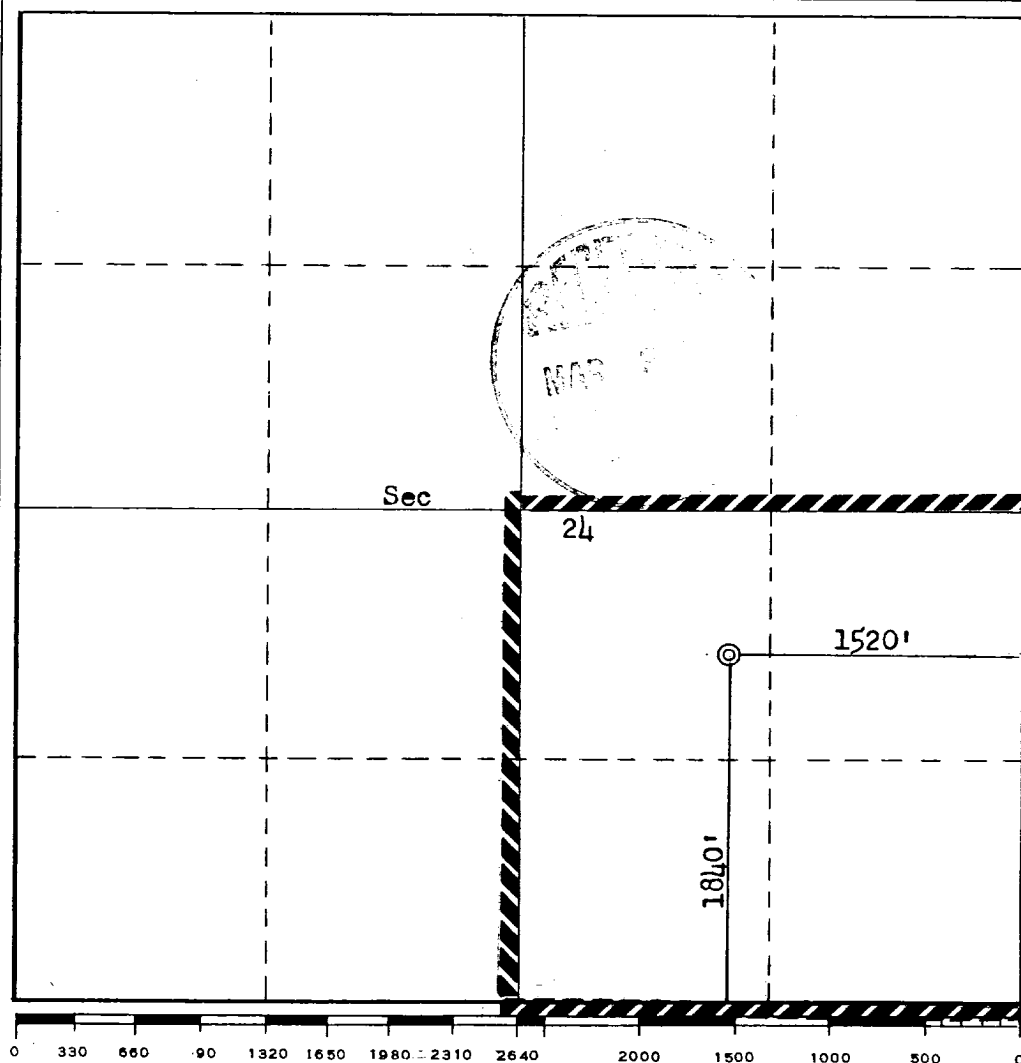
Operator Dome Petroleum Corporation			Lease Dome-Rusty 24-22-7		Well No. 1
Unit Letter J	Section 24	Township 22N	Range 7W	County Sandoval	
Actual Footage Location of Well: 1840 feet from the South line and 1520 feet from the East line					
Ground Level Elev. 6839	Producing Formation Chacra		Pool Rusty Chacra Extension		Dedicated Acreage: 160 ✓ Acres

1. Outline the acreage dedicated to the subject well by colored pencil or hachure marks on the plat below.
2. If more than one lease is dedicated to the well, outline each and identify the ownership thereof (both as to working interest and royalty).
3. If more than one lease of different ownership is dedicated to the well, have the interests of all owners been consolidated by communitization, unitization, force-pooling, etc?

☐ Yes ☐ No If answer is "yes," type of consolidation _____

If answer is "no," list the owners and tract descriptions which have actually been consolidated. (Use reverse side of this form if necessary.) _____

No allowable will be assigned to the well until all interests have been consolidated (by communitization, unitization, forced-pooling, or otherwise) or until a non-standard unit, eliminating such interests, has been approved by the Commission.



CERTIFICATION

I hereby certify that the information contained herein is true and complete to the best of my knowledge and belief.

Name
W. E. Landry

Position
Area Manager

Company
Minerals Management Inc.

Date
3-3-78

I hereby certify that the well location shown on this plat was plotted from field notes of actual surveys made by me or under my supervision, and that the same is true and correct to the best of my knowledge and belief.

Date Surveyed
March 2, 1978

Registered Professional Engineer and/or Land Surveyor
Fred B. Kerr Jr.

Certificate No.
3950