

UNITED STATES
DEPARTMENT OF THE INTERIOR
GEOLOGICAL SURVEY

APPLICATION FOR PERMIT TO DRILL, DEEPEN, OR PLUG BACK

1a. TYPE OF WORK

DRILL ☒DEEPEN ☐PLUG BACK ☐

b. TYPE OF WELL

OIL
WELL ☒GAS
WELL ☐OTHER ☐SINGLE
ZONE ☒MULTIPLE
ZONE ☐

2. NAME OF OPERATOR

CHACE OIL COMPANY, INC.

3. ADDRESS OF OPERATOR

313 Washington S.E., Albuquerque, NM 87108

4. LOCATION OF WELL (Report location clearly and in accordance with any State requirements.)*

At surface

Unit "I" 1850' SL & 790 EL

At proposed prod. zone

14. DISTANCE IN MILES AND DIRECTION FROM NEAREST TOWN OR POST OFFICE*

Regina, NM 10½ miles north

10. DISTANCE FROM PROPOSED*

LOCATION TO NEAREST
PROPERTY OR LEASE LINE, FT.
(Also to nearest drilg. unit line, if any)

4490'

16. NO. OF ACRES IN LEASE

2560

17. NO. OF ACRES ASSIGNED

TO THIS WELL
160

18. DISTANCE FROM PROPOSED LOCATION*

TO NEAREST WELL, DRILLING, COMPLETED,
OR APPLIED FOR, ON THIS LEASE, FT.

1650

19. PROPOSED DEPTH

7500

20. ROTARY OR CABLE TOOLS

Rotary

21. ELEVATIONS (Show whether DF, RT, GR, etc.)

7308 GR

22. APPROX. DATE WORK WILL START*

Nov. 1978

23.

PROPOSED CASING AND CEMENTING PROGRAM

SIZE OF HOLE	SIZE OF CASING	WEIGHT PER FOOT	SETTING DEPTH	QUANTITY OF CEMENT
13-1/2	8-5/8	26#	250'	225 sxs

Drill 265' 13½ surface hole, set 250' 8-5/8" csg. Cement to surface with 225 sxs. Using oil base mud (15%) oil and adequate BOP drill a 7-7/8" hole to 7600' to test the Dakota formation. If productive run 4½" 10.5# or heavier casing to total depth and cement in stages to cover the producing zones including the Pictured Cliffs formation. If non-productive, plug and abandon. The BOP to be a Schaeffer double gate hydraulic tested to 5000#.

RECEIVED

JUN 26 1978

U. S. GEOLOGICAL SURVEY

IN ABOVE SPACE DESCRIBE PROPOSED PROGRAM: If proposal is to deepen or plug back, give data on present productive zone and proposed new productive zone. If proposal is to drill or deepen directionally, give pertinent data on subsurface locations and measured and true vertical depths. Give blowout preventer program if any.

24.

SIGNED

Rayce McCarty

TITLE President

DATE 6-22-78

(This space for Federal or State office use)

PERMIT NO.

APPROVAL DATE

APPROVED BY

TITLE

CONDITIONS OF APPROVAL, IF ANY:

John Frank

*See Instructions On Reverse Side

NEW MEXICO OIL CONSERVATION COMMISSION
WELL LOCATION AND ACREAGE DEDICATION PLAT

Form O-11
Supersedes O-12B
Effective 10-65

All distances must be from the outer boundaries of the Section.

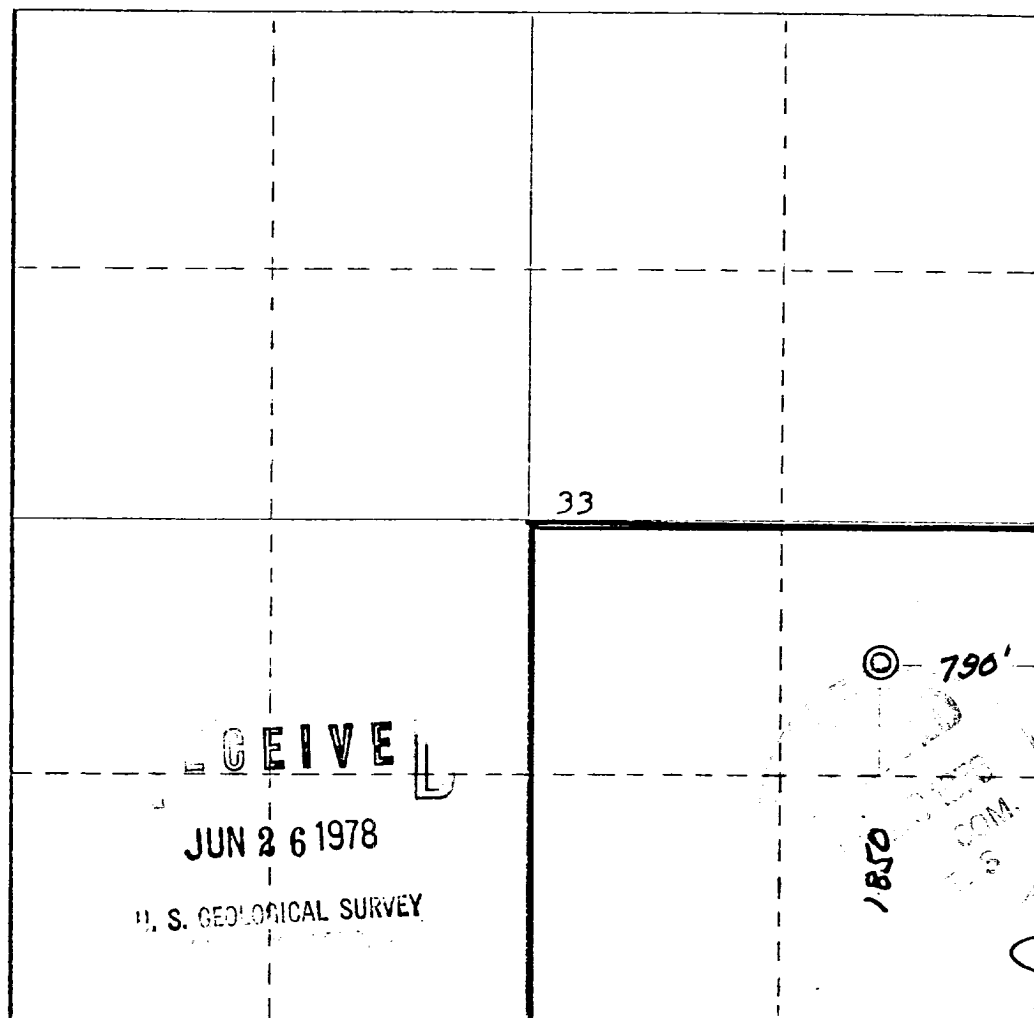
Operator CHACE OIL COMPANY		Lease CHACE APACHE		54	Well No. 26
Unit Letter I	Section 33	Township 23 NORTH	Range 3 WEST	County SANDOVAL	
Actual Footage Location of Well: 1850 feet from the SOUTH line and 790 feet from the EAST line					
Ground Level Elev. 7308	Producing Formation Dakota	Pool Chacon ext	Dedicated Acreage: 160 Acres		

- Outline the acreage dedicated to the subject well by colored pencil or hatchure marks on the plat below.
- If more than one lease is dedicated to the well, outline each and identify the ownership thereof (both as to working interest and royalty).
- If more than one lease of different ownership is dedicated to the well, have the interests of all owners been consolidated by communitization, unitization, force-pooling, etc?

☐ Yes ☐ No If answer is "yes," type of consolidation _____

If answer is "no," list the owners and tract descriptions which have actually been consolidated. (Use reverse side of this form if necessary.) _____

No allowable will be assigned to the well until all interests have been consolidated (by communitization, unitization, forced-pooling, or otherwise) or until a non-standard unit, eliminating such interests, has been approved by the Commission.



CERTIFICATION

I hereby certify that the information contained herein is true and complete to the best of my knowledge and belief.

Royce McCary
Name **Royce McCary**
President

Position
Chace Oil Company, Inc.

Company
June 22, 1978

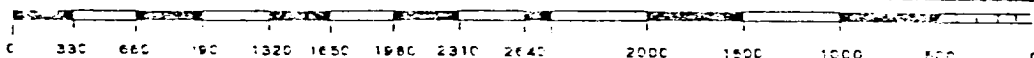
Date

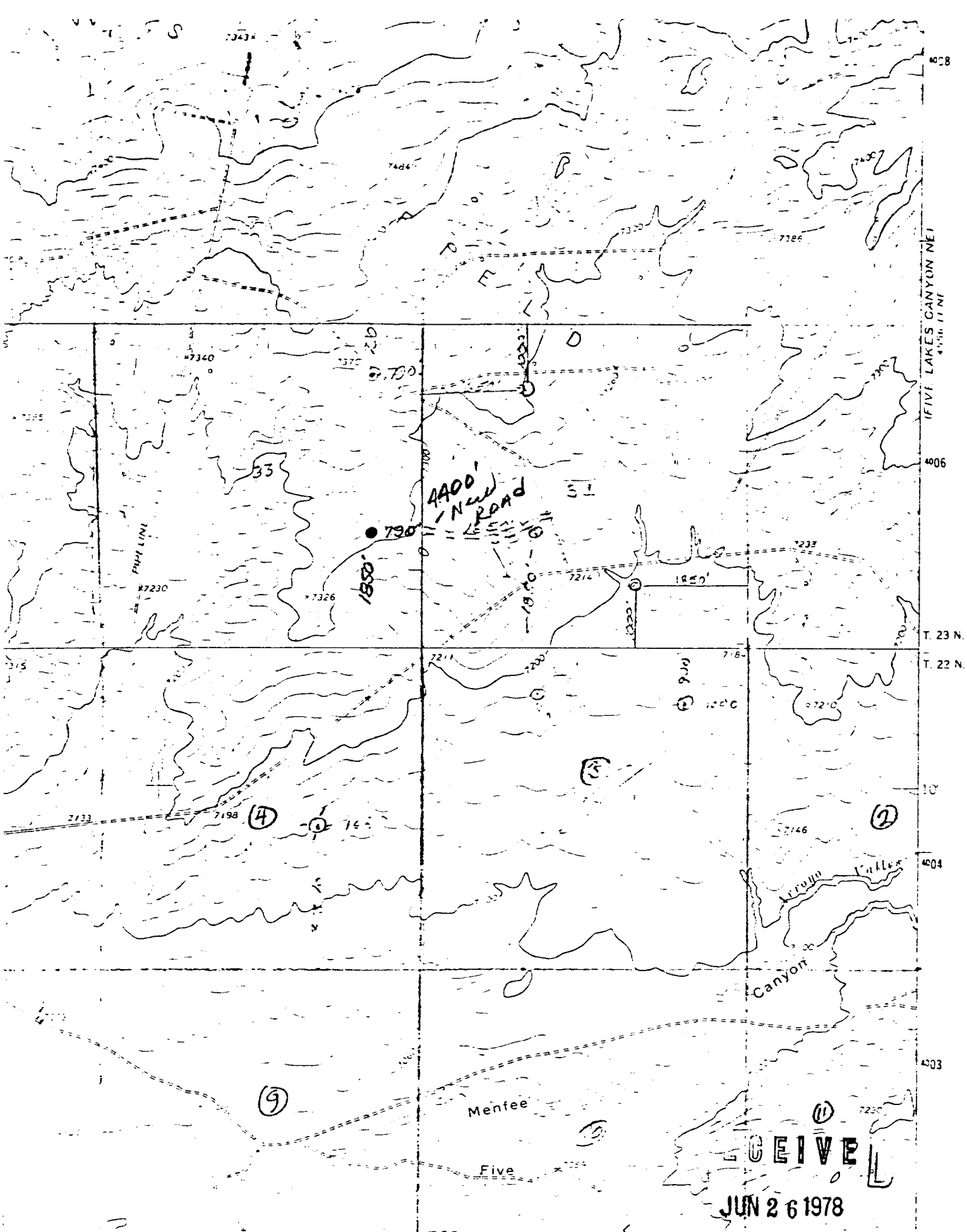
I hereby certify that the well location shown on this plat was plotted from field notes of actual surveys made by me or under my supervision, and that the same is true and correct to the best of my knowledge and belief.

Date Surveyed
6 June 1978

Registered Professional Engineer
and Land Surveyor
James P. Leese
James P. Leese

Certificate No.
2463





CHACE OIL COMPANY
Chace Apache #54-6
SE $\frac{1}{4}$ Sec. 33, T 23 N, R 3 W, N.M.P.M.
Sandoval County, N.M.

U. S. GEOLOGICAL SURVEY

JUN 26 1978