

UNITED STATES
DEPARTMENT OF THE INTERIOR
GEOLOGICAL SURVEY

APPLICATION FOR PERMIT TO DRILL, DEEPEN, OR PLUG BACK

1a. TYPE OF WORK

DRILL ☒DEEPEN ☐PLUG BACK ☐

b. TYPE OF WELL

OIL
WELL ☒GAS
WELL ☐OTHER ☐SINGLE
ZONE ☒MULTIPLE
ZONE ☐

2. NAME OF OPERATOR

CHACE OIL COMPANY, INC.

3. ADDRESS OF OPERATOR

313 Washington S.E., Albuquerque, NM 87108

4. LOCATION OF WELL (Report location clearly and in accordance with any State requirements.)*

At surface

Unit "K" 1850' SL & 1850' WL

At proposed prod. zone

14. DISTANCE IN MILES AND DIRECTION FROM NEAREST TOWN OR POST OFFICE*

Regina, NM 11 miles north

15. DISTANCE FROM PROPOSED*

LOCATION TO NEAREST
PROPERTY OR LEASE LINE, FT.
(Also to nearest drlg. unit line, if any)

1850'

16. NO. OF ACRES IN LEASE

2560

18. DISTANCE FROM PROPOSED LOCATION*

TO NEAREST WELL, DRILLING, COMPLETED,
OR APPLIED FOR, ON THIS LEASE, FT.

2400'

19. PROPOSED DEPTH

7500

17. NO. OF ACRES ASSIGNED
TO THIS WELL

160

20. ROTARY OR CABLE TOOLS

Rotary

21. ELEVATIONS (Show whether DF, RT, GR, etc.)

7233 GR

23.

PROPOSED CASING AND CEMENTING PROGRAM

SIZE OF HOLE	SIZE OF CASING	WEIGHT PER FOOT	SETTING DEPTH	QUANTITY OF CEMENT
13-1/2"	8-5/8"	26#	250'	225 sxs

Drill 265' 13 1/2" surface hole, set 250' 8-5/8" csg. Cement to surface with 225 sxs. Using oil base mud (15%) oil and adequate BOP drill a 7-7/8" hole to 7500' to test the Dakota formation. If productive, run 4 1/2" 10.5# or heavier casing to total depth and cement in stages to cover the producing zones including the Pictured Cliffs formation. If non-productive, plug and abandon. The BOP to be a Schaeffler double gate Hydraulic tested to 5000#.

LIVED

JUN 26 1978

GEOLOGICAL SURVEY

IN ABOVE SPACE DESCRIBE PROPOSED PROGRAM: If proposal is to deepen or plug back, give data on present productive zone and proposed new productive zone. If proposal is to drill or deepen directionally, give pertinent data on subsurface locations and measured and true vertical depths. Give blowout preventer program, if any.

24.

SIGNED

Rayce M. Cary

TITLE

President

DATE

6-22-78

(This space for Federal or State office use)

PERMIT NO.

APPROVAL DATE

APPROVED BY

CONDITIONS OF APPROVAL, IF ANY:

W. E. Frank

TITLE

DATE

NEW MEXICO OIL CONSERVATION COMMISSION
WELL LOCATION AND ACREAGE DEDICATION PLAT

Form C-121
Supersedes C-128
Effective 10-61

All distances must be from the outer boundaries of the Section.

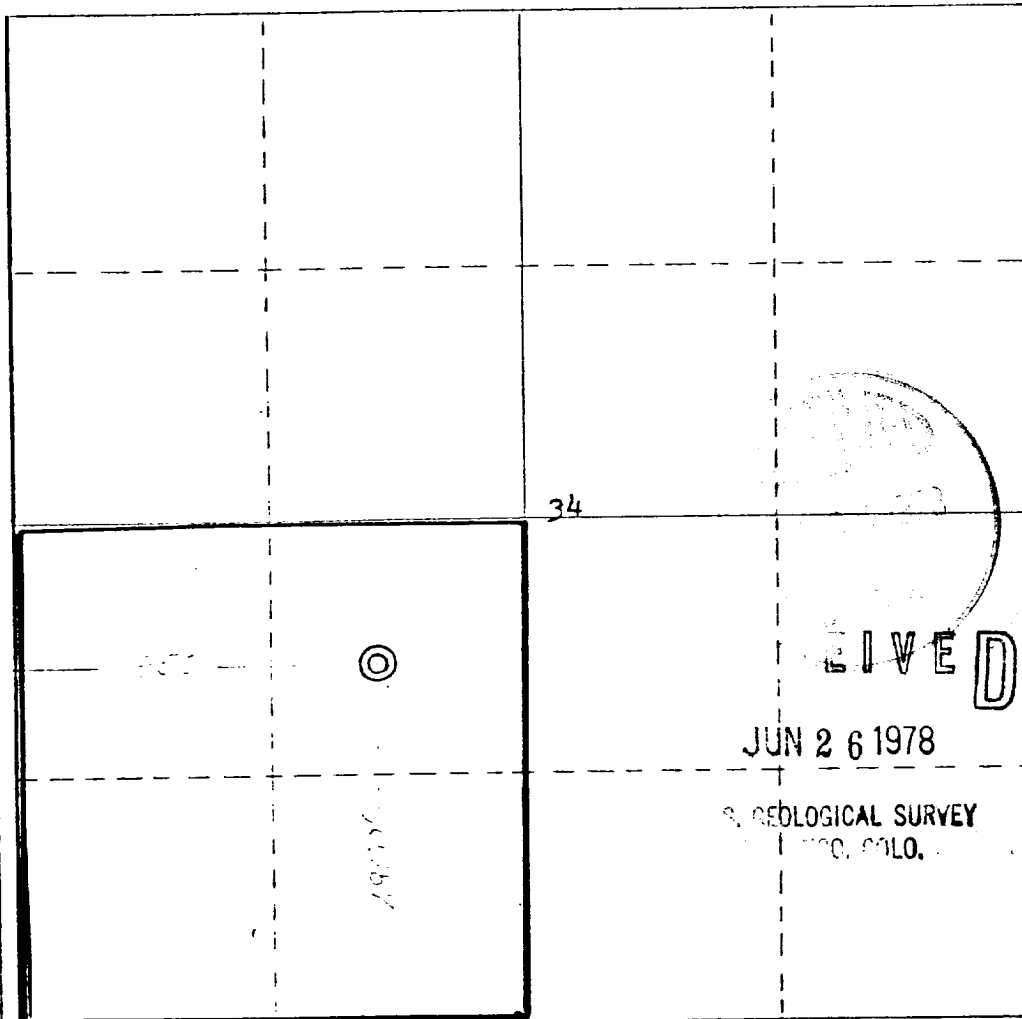
Operator CHACE OIL COMPANY			Lease CHACE APACHE 54		Well No. 7
Unit Letter K	Section 34	Township 23 NORTH	Range 3 WEST	County SANDOVAL	
Actual Footage Location of Wells: 1850 feet from the SOUTH line and 1850 feet from the WEST line					
Ground Level Elev. 7233	Producing Formation DAKOTA	Pool CHACON DAKOTA ext	Dedicated Acreage: 160 Acres		

1. Outline the acreage dedicated to the subject well by colored pencil or hachure marks on the plat below.
2. If more than one lease is dedicated to the well, outline each and identify the ownership thereof (both as to working interest and royalty).
3. If more than one lease of different ownership is dedicated to the well, have the interests of all owners been consolidated by communitization, unitization, force-pooling, etc?

☐ Yes ☐ No If answer is "yes," type of consolidation _____

If answer is "no," list the owners and tract descriptions which have actually been consolidated. (Use reverse side of this form if necessary.) _____

No allowable will be assigned to the well until all interests have been consolidated (by communitization, unitization, forced-pooling, or otherwise) or until a non-standard unit, eliminating such interests, has been approved by the Commission.



CERTIFICATION

I hereby certify that the information contained herein is true and complete to the best of my knowledge and belief.

Royce McCary
Royce McCary

Position
President

Company
Chace Oil Company, Inc

Date
June 22, 1978

I hereby certify that the well location shown on this plat was plotted from field notes of actual surveys made by me or under my supervision, and that the same is true and correct to the best of my knowledge and belief.

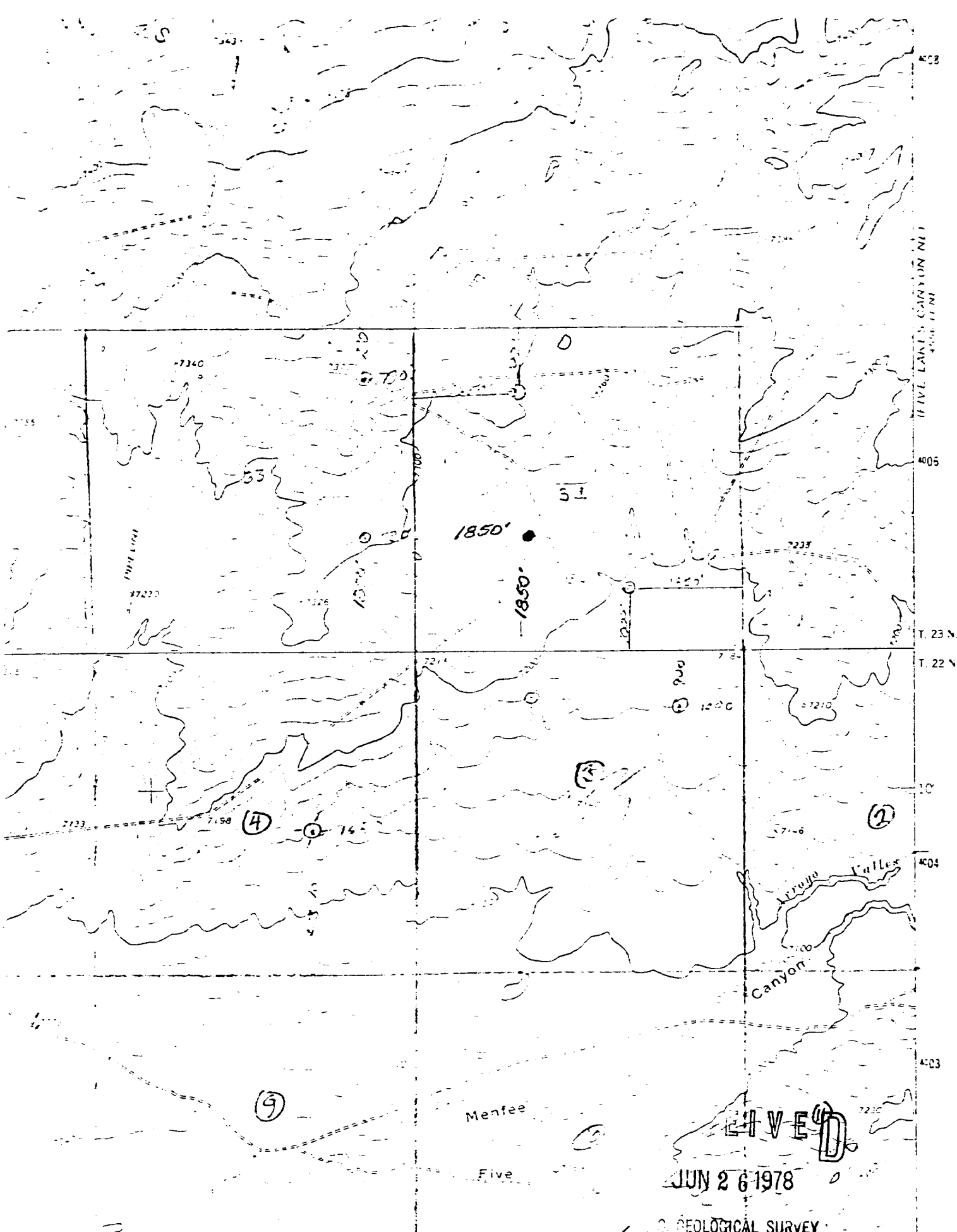
Date Surveyed
6 June 1978

Registered Professional Engineer
and Land Surveyor

James P. Lease
James P. Lease

Certificate No.
1463

0 330 660 990 1320 1650 1980 2310 2640 2970 3300 3630 3960 4290 4620 4950 5280 5610 5940 6270 6600



CHACE OIL COMPANY
Chace Apache #54-7
SW $\frac{1}{4}$ Sec. 34, T 23 N, R 3 W.
Sandoval County, New Mexico

JUN 26 1978

U.S. GEOLOGICAL SURVEY
D. COLO.