

**NEW MEXICO OIL CONSERVATION COMMISSION
WELL LOCATION AND ACREAGE DEDICATION PLAT**

Form O-100
Supersedes O-128
Effective 1-1-77

All distances must be from the outer boundaries of the section

Operator DAVE M. THOMAS JR.			Lease CHACON JICARILLA APACHE "D"		Well No. 101
Unit Letter L	Section 26	Township 23N	Range 3W	County Sandoval	

Actual Footage Location of Well:

1850	feet from the	South	line and	790	feet from the	West	line	
Ground Level Elev. 7373	Producing Formation Dakota		Pool Chacon Dakota Associated		Dedicated Acreage 320			Acre

1. Outline the acreage dedicated to the subject well by colored pencil or hatchure marks on the plat below.
2. If more than one lease is dedicated to the well, outline each and identify the ownership thereof (both as to working interest and royalty).
3. If more than one lease of different ownership is dedicated to the well, have the interests of all owners been consolidated by communitization, unitization, force-pooling, etc?

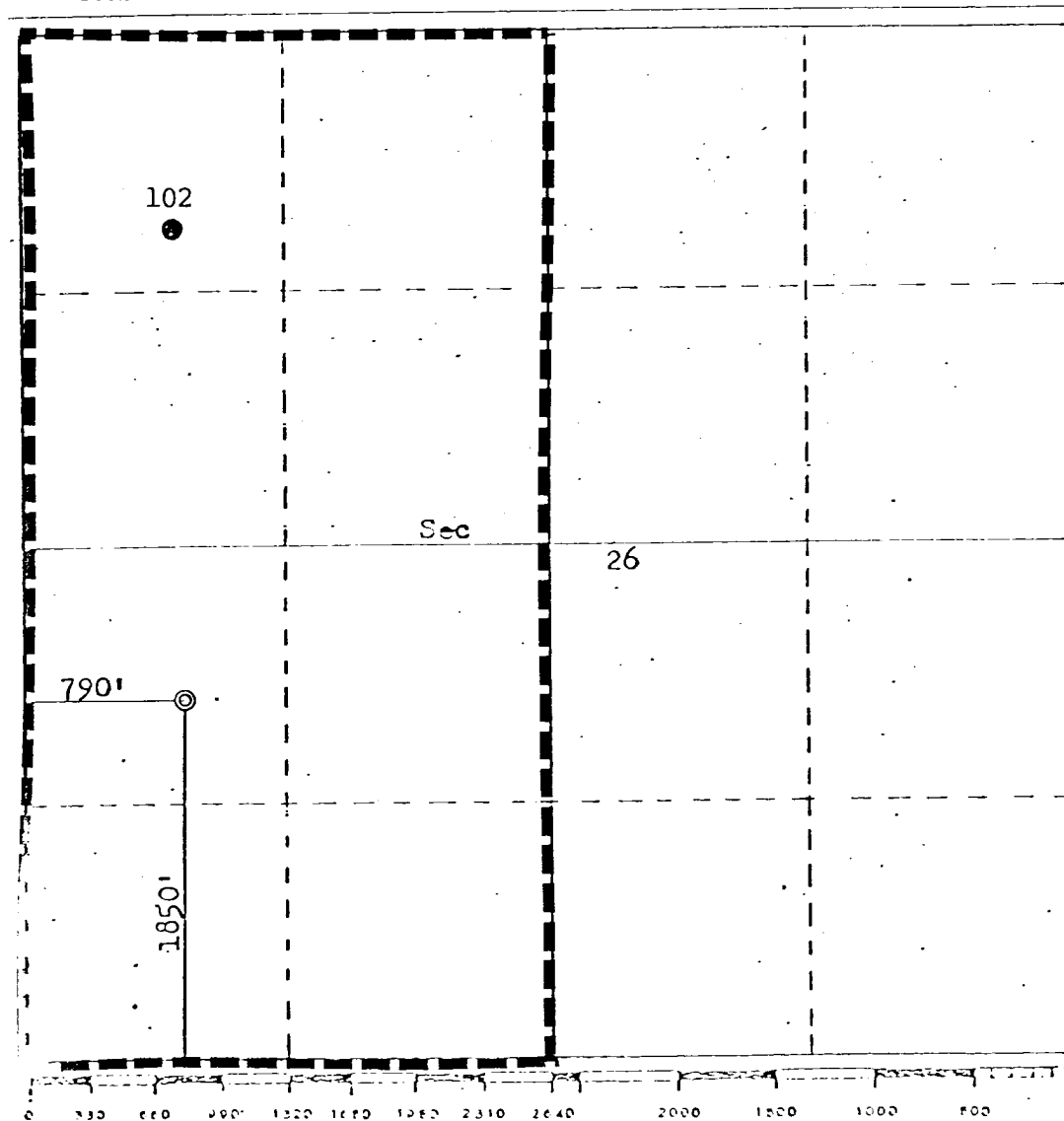
☐ Yes ☐ No If answer is "yes," type of consolidation _____

If answer is "no," list the owners and tract descriptions which have actually been consolidated. (On reverse side of this form if necessary.) _____

No allowable will be assigned to the well until all interests have been consolidated (by communitization, unitization, forced-pooling, or otherwise) or until a non-standard unit, eliminating such interests, has been approved by the Commission.

RECEIVED
APR 7 1983

OIL CON. DIV.]
DIST. 3



CERTIFICATION

I hereby certify that the information contained herein is true and complete to the best of my knowledge and belief.
FOR: DAVE M. THOMAS, JR.

ORIGINAL SIGNED BY

Name **EWELL N. WALSH**
Ewell N. Walsh, P.E.

Position
President

Company
Walsh Engr. & Prod. Corp.

Date
4/6/83

I hereby certify that the well location shown on this plat was plotted from field notes of actual surveys made by me or under my supervision, and that the same is true and correct to the best of my knowledge and belief.

Date Surveyed

July 27, 1976

Registered Professional Engineer
and or Land Surveyor
Fred B. Walsh Jr.
Fred B. Walsh Jr.
Certification No. **3950**
FRED B. WALSH, JR.