

UNITED STATES
DEPARTMENT OF THE INTERIOR
GEOLOGICAL SURVEY

APPLICATION FOR PERMIT TO DRILL, DEEPEN, OR PLUG BACK

1a. TYPE OF WORK

DRILL ☒DEEPEN ☐PLUG BACK ☐

b. TYPE OF WELL

OIL
WELL ☐GAS
WELL ☒

OTHER

SINGLE
ZONE ☒MULTIPLE
ZONE ☐

2. NAME OF OPERATOR

Southland Royalty Company

3. ADDRESS OF OPERATOR

P. O. Drawer 570, Farmington, New Mexico

4. LOCATION OF WELL (Report location clearly and in accordance with any State requirements.)*
At surface

790' FNL & 1850' FEL

At proposed prod. zone

14. DISTANCE IN MILES AND DIRECTION FROM NEAREST TOWN OR POST OFFICE*

15 miles East of Counselors, New Mexico

15. DISTANCE FROM PROPOSED*

LOCATION TO NEAREST
PROPERTY OR LEASE LINE, FT.
(Also to nearest drlg. unit line, if any)18. DISTANCE FROM PROPOSED LOCATION*
TO NEAREST WELL, DRILLING, COMPLETED,
OR APPLIED FOR, ON THIS LEASE, FT.

16. NO. OF ACRES IN LEASE

19. PROPOSED DEPTH

2192'

17. NO. OF ACRES ASSIGNED
TO THIS WELL

211.60

20. ROTARY OR CABLE TOOLS

Rotary

21. ELEVATIONS (Show whether DF, RT, GR, etc.)

6862' GR

22. APPROX. DATE WORK WILL START*

November 1, 1978

23.

PROPOSED CASING AND CEMENTING PROGRAM

SIZE OF HOLE	SIZE OF CASING	WEIGHT PER FOOT	SETTING DEPTH	QUANTITY OF CEMENT
12-1/4"	8-5/8"	24#	120'	100.3 cu. ft.
6-3/4"	2-7/8"	6.5#	2192'	606.6 cu. ft.

Top of Pictured Cliffs sand is estimated at 2042'.

Fresh water mud will be used to drill from surface to total depth.

It is anticipated that an IES and a GR-Density log will be run at total depth.

No poisonous gases or abnormal pressures are anticipated in this well.

It is expected that this well be drilled by November 15, 1978. This depends on

time required for approvals, rig availability and the weather.

Gas is not dedicated.

IN ABOVE SPACE DESCRIBE PROPOSED PROGRAM: If proposal is to deepen or plug back, give data on present productive zone and proposed new productive zone. If proposal is to drill or deepen directionally, give pertinent data on subsurface locations and measured and true vertical depths. Give blowout preventer program, if any.

24.

SIGNED

TITLE District Production Manager

DATE August 16, 1978

(This space for Federal or State office use)

PERMIT NO.

APPROVAL DATE

APPROVED BY

TITLE

DATE

CONDITIONS OF APPROVAL, IF ANY:

NEW MEXICO OIL CONSERVATION COMMISSION
WELL LOCATION AND ACREAGE DEDICATION PLAT

Form C-102
Supersedes C-128
Effective 1-1-65

All distances must be from the outer boundaries of the Section.

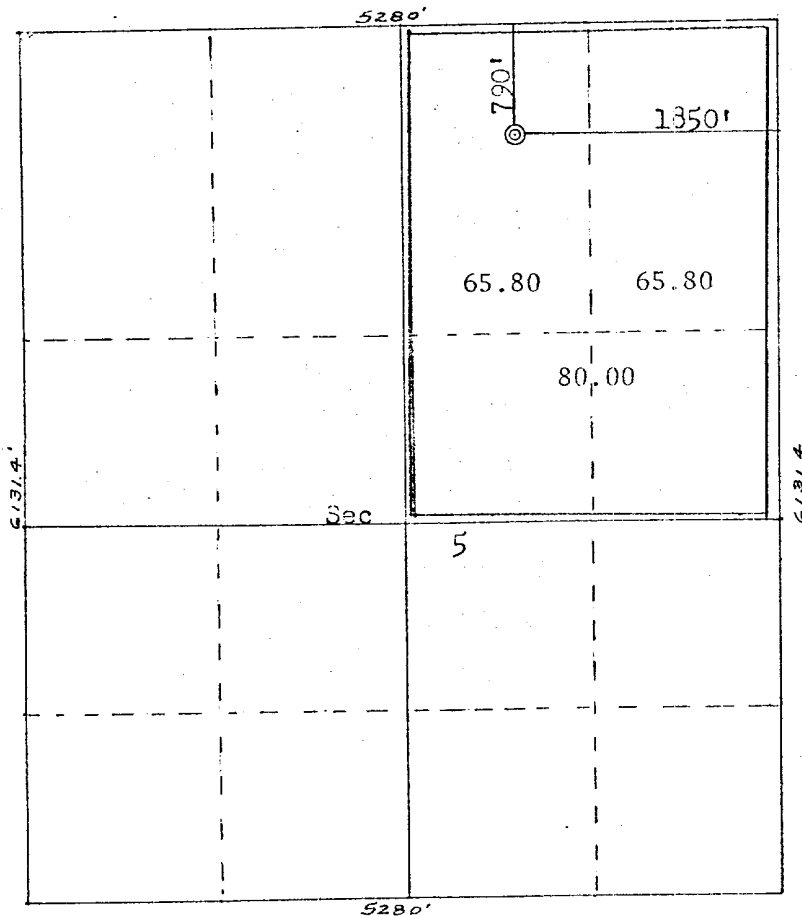
Operator SOUTHLAND ROYALTY COMPANY			Lease JICARILLA 434		Well No. 1
Unit Letter B	Section 5	Township 22N	Range 14	County Sandoval	
Actual Footage Location of Well					
790 feet from the North line and 1350 feet from the East line					
Ground Level Elev. 6862	Producing Formation Pictured Cliffs	Pool Undesignated Ballard ext	Dedicated Acreage: 211.60 Acres		

1. Outline the acreage dedicated to the subject well by colored pencil or hachure marks on the plat below.
2. If more than one lease is dedicated to the well, outline each and identify the ownership thereof (both as to working interest and royalty).
3. If more than one lease of different ownership is dedicated to the well, have the interests of all owners been consolidated by communitization, unitization, force-pooling, etc?

☐ Yes ☐ No If answer is "yes," type of consolidation _____

If answer is "no," list the owners and tract descriptions which have actually been consolidated. (Use reverse side of this form if necessary.) _____

No allowable will be assigned to the well until all interests have been consolidated (by communitization, unitization, forced-pooling, or otherwise) or until a non-standard unit, eliminating such interests, has been approved by the Commission.



CERTIFICATION

I hereby certify that the information contained herein is true and complete to the best of my knowledge and belief.

Name _____
Position
District Production Manager
Company
Southland Royalty Company
Date
August 16, 1978

I hereby certify that the well location shown on this plat was plotted from field notes of actual surveys made by me or under my supervision, and that the same is true and correct to the best of my knowledge and belief.

Date Surveyed
July 1, 1978
Registered Professional Engineer and Land Surveyor
Fred R. Kerr, Jr.
Certification No. 10

DRILLING SCHEDULE - JICARILLA 434 #1

Location: 790'FNL & 1850'FEL, Section 5, T22N, R4W, Sandoval, New Mexico.

Field: Undesignated Pictured Cliffs

Elevation: 6862' GL

Geology: Formation Tops: Pictured Cliffs 2042'
Total Depth 2192'

Logging Program: IES & GR Density at Total Depth.

Coring Program: None

Natural Gauges: None

Drilling: Contractor -
SRC Representative: Max Larson

Tool Pusher:
SRC Ans. Svc. 325-1841
Dispatch No. 325-7391

Mud Program: Fresh water mud from surface to Total Depth.

Materials: Casing Program

<u>Hole Size</u>	<u>Depth</u>	<u>Casing Size</u>	<u>Wt. & Grade</u>
12-1/4"	120'	8-5/8"	24# K-55
6-3/4"	2192'	2-7/8"	6.5# J-55

Float Equipment:

8-5/8" Surface Casing: Pathfinder Type A guide shoe.

2-7/8" Production Casing: Notched collar guide shoe. Howco 2-7/8" latchdown baffle. Two 3-1/16" rubber balls. Howco 2-7/8" Omega plug. Use 3 1/4" ID plug container head, 6 B & W stabilizers on bottom 6jts.

Wellhead equipment: Rector 8-5/8" x 2-7/8" threaded head.

Cementing:

8-5/8" Surface Casing: 85 sx (100.3 cu. ft.) C1 B w/1/4# gel flake/sk & 3% CaCl₂. WOC 12 hrs. Test to 600psi prior to drilling out.

Drilling Schedule - Jicarilla 434 #1
Page 2

Cementing-Continued:

2-7/8" Production Casing: 370sx 50/50 C1 B poz w/6% gel mixed w/7.2
gallons water/sk followed by 50 sx C1 B
w/2% CaCl_2 (606.6 cu. ft.). Run temperature survey
12 hours after plug down.

L. O. Van Ryan

REF/mb

8-10-78



Southland Royalty Company

United States Geological Survey
P. O. Box 1809
Durango, Colorado

Attention: Mr. Jerry Long

Dear Sir:

I hereby certify that I, or persons under my direct supervision, have inspected the proposed drillsite and access route; that I am familiar with the conditions which presently exist; that the statements made in this plan are, to the best of my knowledge, true and correct; and, that the work associated with the operations proposed herein be performed by Southland Royalty Company and its contractors and subcontractors in conformity with this plan and the terms and conditions under which it is approved.

Date: August 16, 1978

Name: CC Parson

Title: District Engineer



Southland Royalty Company

August 16, 1978

United States Geological Survey
P. O. Box 1809
Durango, Colorado

Attention: Mr. Jerry Long

Dear Sir:

Enclosed please find map showing existing roads and planned access roads to Southland Royalty Company's Jicarilla 434 #1 well. The location of tank batteries and flow lines will be on location with well. A burn pit will be provided for disposal of trash. Cuttings, drilling fluid and produced fluids will be put into the reserve pit and properly disposed of depending on amount and type of fluids.

Contractor will furnish restroom facilities on location.

There will be no air strips or camps.

Also, enclosed is a location layout showing approximate location of rig, pits, pipe racks and cut required to build this location.

Water supply will be water holes along Largo Wash. All water will be transported by truck and stored on location.

The location will be restored according to Bureau of Indian Affairs standards. This work will begin when all related construction is finished.

Mr. Max Larson will be Southland Royalty Company's field representative supervising these operations.

Yours truly,

L. O. Van Ryan
District Production Manager

LOVR/dg



Southland Royalty Company

August 16, 1978

United States Geological Survey
P. O. Box 1809
Durango, Colorado

Attention: Mr. Jerry Long

Re: Blowout Preventer Plan

Dear Sir:

All drilling and completion rigs will be equipped with 8" or larger double gate hydraulic blowout preventers and a hydraulic operated closing unit with steel lines.

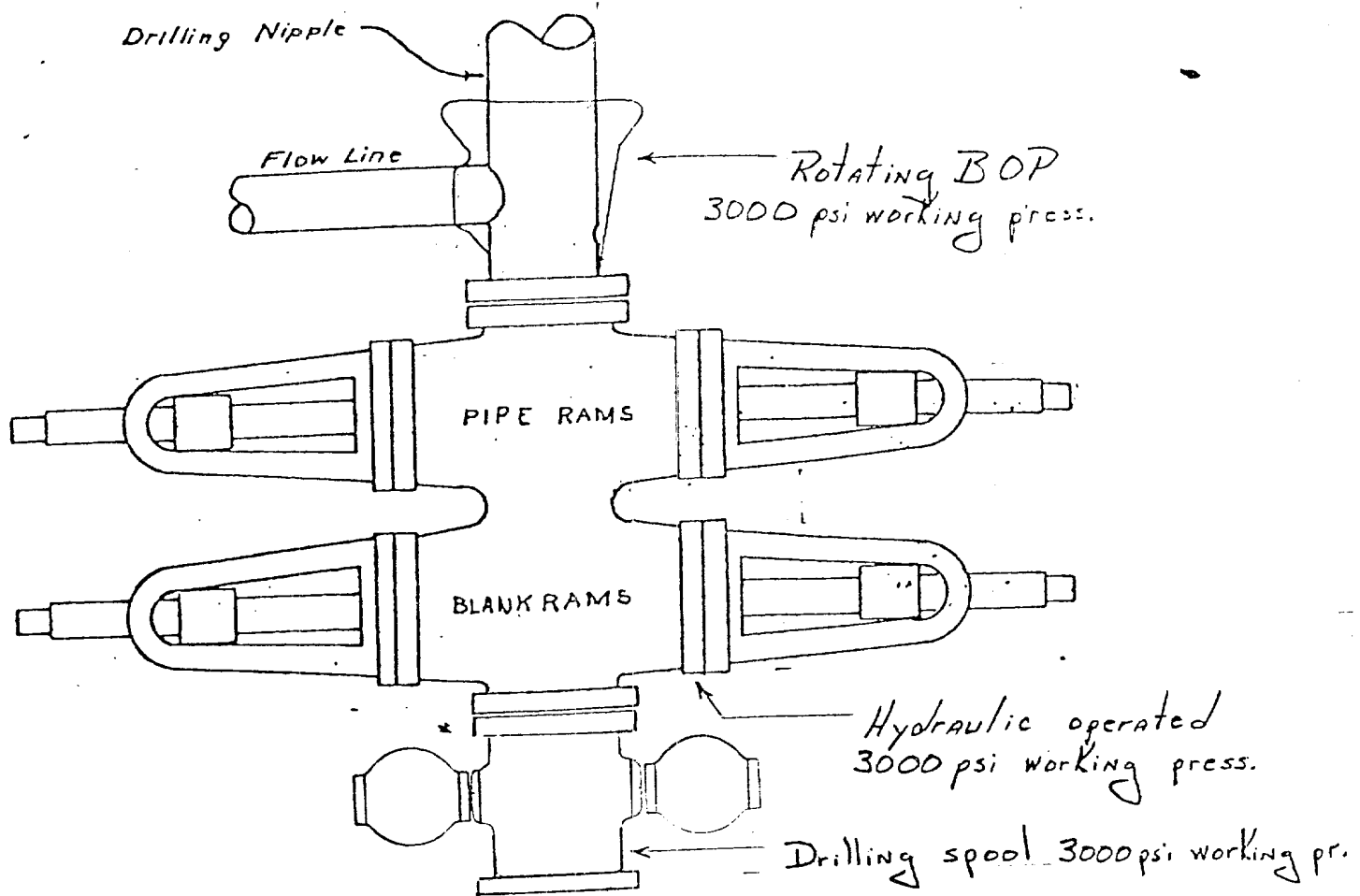
The preventer is 3000# working pressure and 6000# test.

All crews will be thoroughly trained in the operation of this preventer.
The preventer will be tested frequently enough to insure proper operation.

Yours truly,

L. O. Van Ryan
District Production Manager

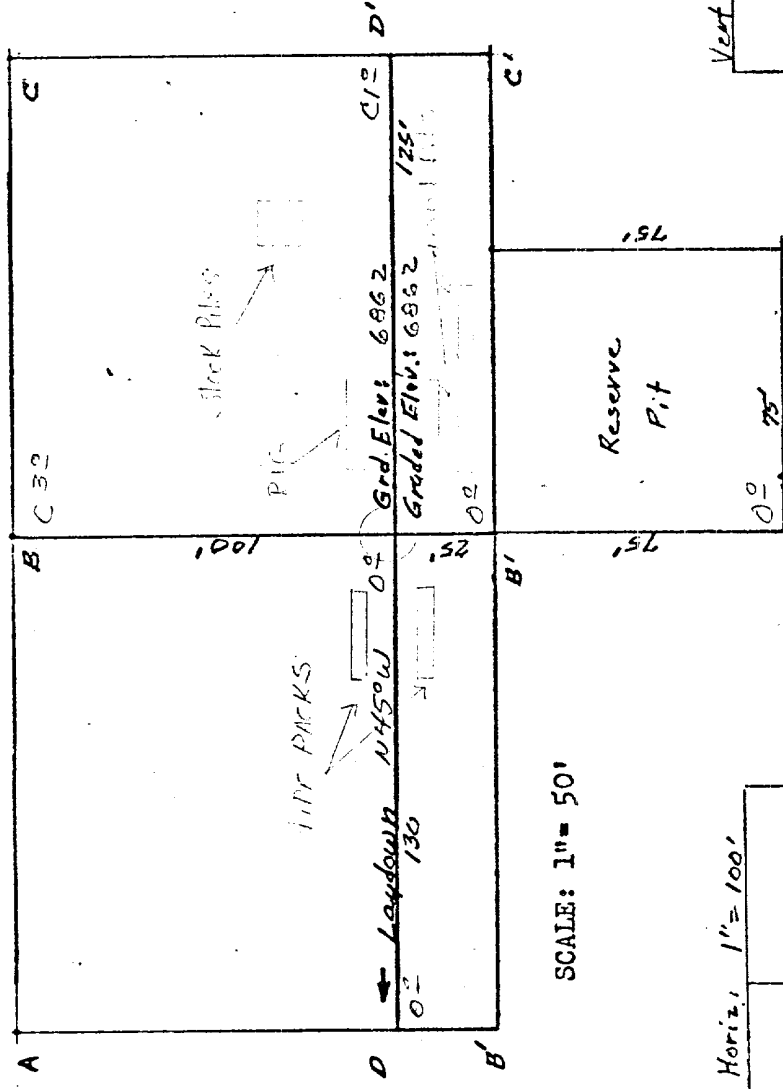
LOVR/dg



Preventers and spools are to have
through bore of 8" - 3000# PSI or larger.

5-22-41

Location Profile for
 SOUTHLAND ROYALTY COMPANY - JICARILLA 434 #1
 790' FNL 1850' FEL Sec 5-T22N-R4W
 Sandoval County, New Mexico



SCALE: 1" = 50'

Vert: 1"=40' C-C' Horiz: 1"=100'

D-D' Horiz: 1"=100'

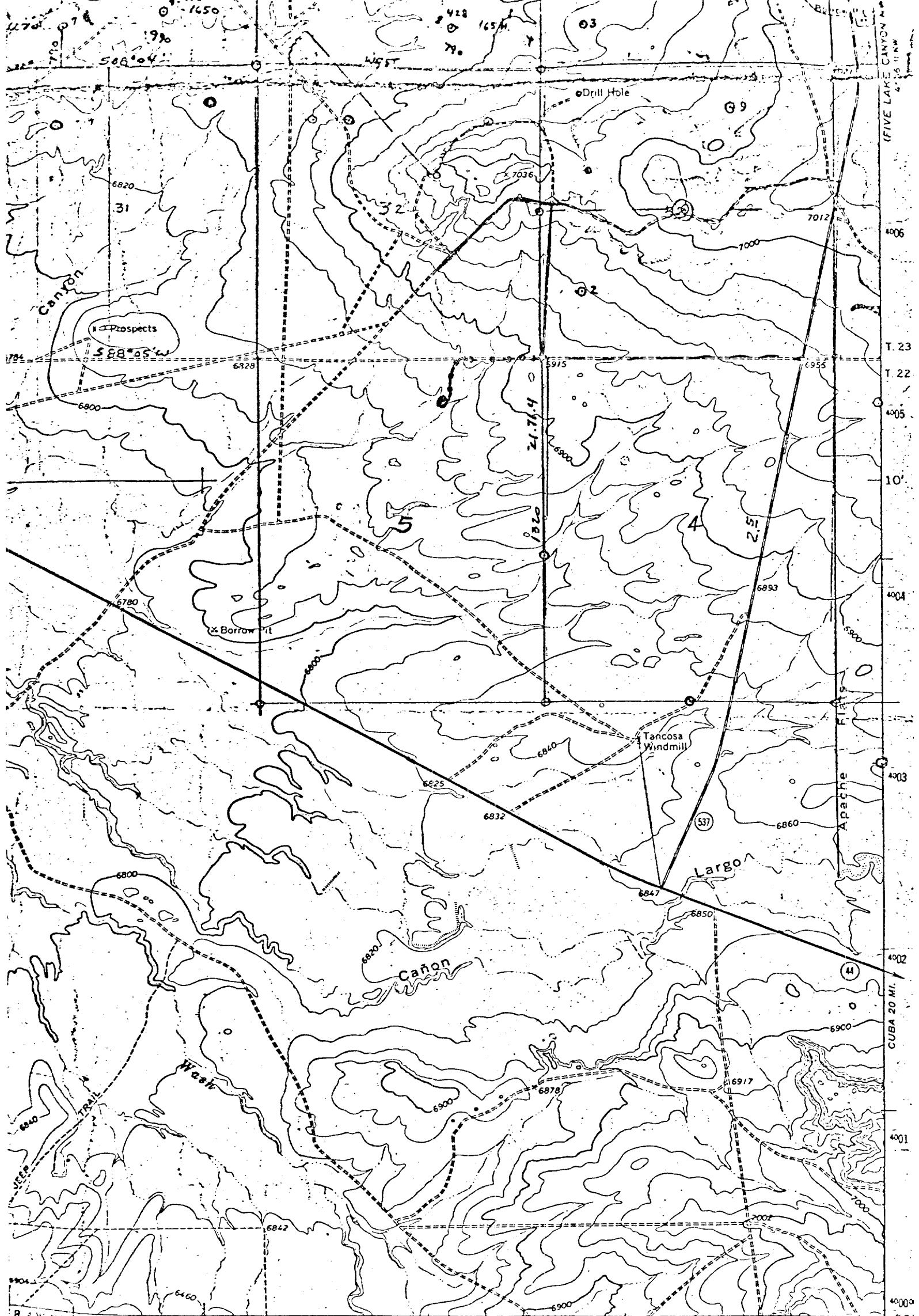
6870				
6860				
6850				

Vert: 1"=40' A-A' Horiz: 1"=100'

B-B' Horiz: 1"=100'

6870				
6860				
6850				

KERR LAND SURVEYING
 Date: July 1, 1978



PROPOSED LOCATION ○
EXISTING LOCATIONS ○
PROPOSED ROADS - - - - -
EXISTING ROADS ————



Vicinity Map for
SOUTHLAND ROYALTY CO. #
790'FNL 1850'FEL Sec 5-T22N-R4W
SANDOVAL COUNTY, NEW MEXICO

Medium-duty ———— Unimproved dirt - - - - -
○ State Route

LA 36

STATE OF NEW MEXICO
ENERGY AND MINERALS DEPARTMENT
OIL CONSERVATION DIVISION
AZTEC DISTRICT OFFICE

JERRY APODACA
GOVERNOR

NICK FRANKLIN
SECRETARY

August 30, 1978

1000 RIO BRAZOS ROAD
AZTEC, NEW MEXICO 87410
(505) 334-6178

NWU 3- 749

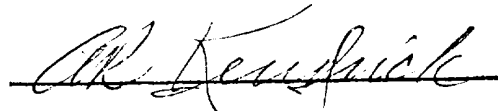
Southland Royalty
P. O. Drawer 570
Farmington, NM

SUBJECT: NON-STANDARD GAS PRORATION UNIT CONSISTING OF 211.60
ACRES IN THE Ballard Pictured Cliffs ext. GAS
POOL DESCRIBED AS FOLLOWS:

TOWNSHIP 22 NORTH, RANGE 4 WEST, NMPM

SECTION: 5 NE/4

by authority granted me by Rule 5(b) of Order R-1670, as amended, the above-
described acreage has been approved as a non-standard gas proration unit
to be dedicated to the Jicarilla 434
well no. 1, located 790/N: 1850/E of said
Section 5.


Supervisor, District #3

cc: Oil Conservation Commission
Santa Fe, New Mexico