

UNITED STATES  
DEPARTMENT OF THE INTERIOR  
GEOLOGICAL SURVEY

## APPLICATION FOR PERMIT TO DRILL, DEEPEN, OR PLUG BACK

## 1a. TYPE OF WORK

DRILL ☒DEEPEN ☐PLUG BACK ☐

## b. TYPE OF WELL

OIL  
WELL ☐GAS  
WELL ☒

OTHER

SINGLE  
ZONE ☒MULTIPLE  
ZONE ☐

## 2. NAME OF OPERATOR

Southland Royalty Company

## 3. ADDRESS OF OPERATOR

P. O. Drawer 570, Farmington, New Mexico

## 4. LOCATION OF WELL (Report location clearly and in accordance with any State requirements.\*)

At surface

910' FNL &amp; 870' FEL

At proposed prod. zone

## 14. DISTANCE IN MILES AND DIRECTION FROM NEAREST TOWN OR POST OFFICE\*

30 miles East of Counselors, New Mexico

## 15. DISTANCE FROM PROPOSED\*

LOCATION TO NEAREST  
PROPERTY OR LEASE LINE, FT.  
(Also to nearest drlg. unit line, if any)

## 18. DISTANCE FROM PROPOSED LOCATION\*

TO NEAREST WELL, DRILLING, COMPLETED,  
OR APPLIED FOR, ON THIS LEASE, FT.

## 16. NO. OF ACRES IN LEASE

## 19. PROPOSED DEPTH

3178'

17. NO. OF ACRES ASSIGNED  
TO THIS WELL

160

## 20. ROTARY OR CABLE TOOLS

Rotary

## 21. ELEVATIONS (Show whether DF, RT, GR, etc.)

7418' GR

## 22. APPROX. DATE WORK WILL START\*

November 1, 1978

## 23.

## PROPOSED CASING AND CEMENTING PROGRAM

SIZE OF HOLE	SIZE OF CASING	WEIGHT PER FOOT	SETTING DEPTH	QUANTITY OF CEMENT
12-1/4"	8-5/8"	24#	120'	100.3 cu. ft.
6-3/4"	2-7/8"	6.5#	3178'	651.0 cu. ft.

Top of Pictured Cliffs sand is estimated at 3018'.

Fresh water mud will be used to drill from surface to total depth.

It is anticipated that an IES and a GR-Density log be run at total depth.

No abnormal pressures or poisonous gases are anticipated in this well.

It is expected that this well will be drilled before November 15, 1978. This

depends on time required for approvals, rig availability and the weather.

Gas is not dedicated

IN ABOVE SPACE DESCRIBE PROPOSED PROGRAM: If proposal is to deepen or plug back, give data on present productive zone and proposed new productive zone. If proposal is to drill or deepen directionally, give pertinent data on subsurface locations and measured and true vertical depths. Give blowout preventer program, if any.

24.

SIGNED

TITLE

District Production Manager

DATE

August 16, 1978

(This space for Federal or State office use)

PERMIT NO.

APPROVAL DATE

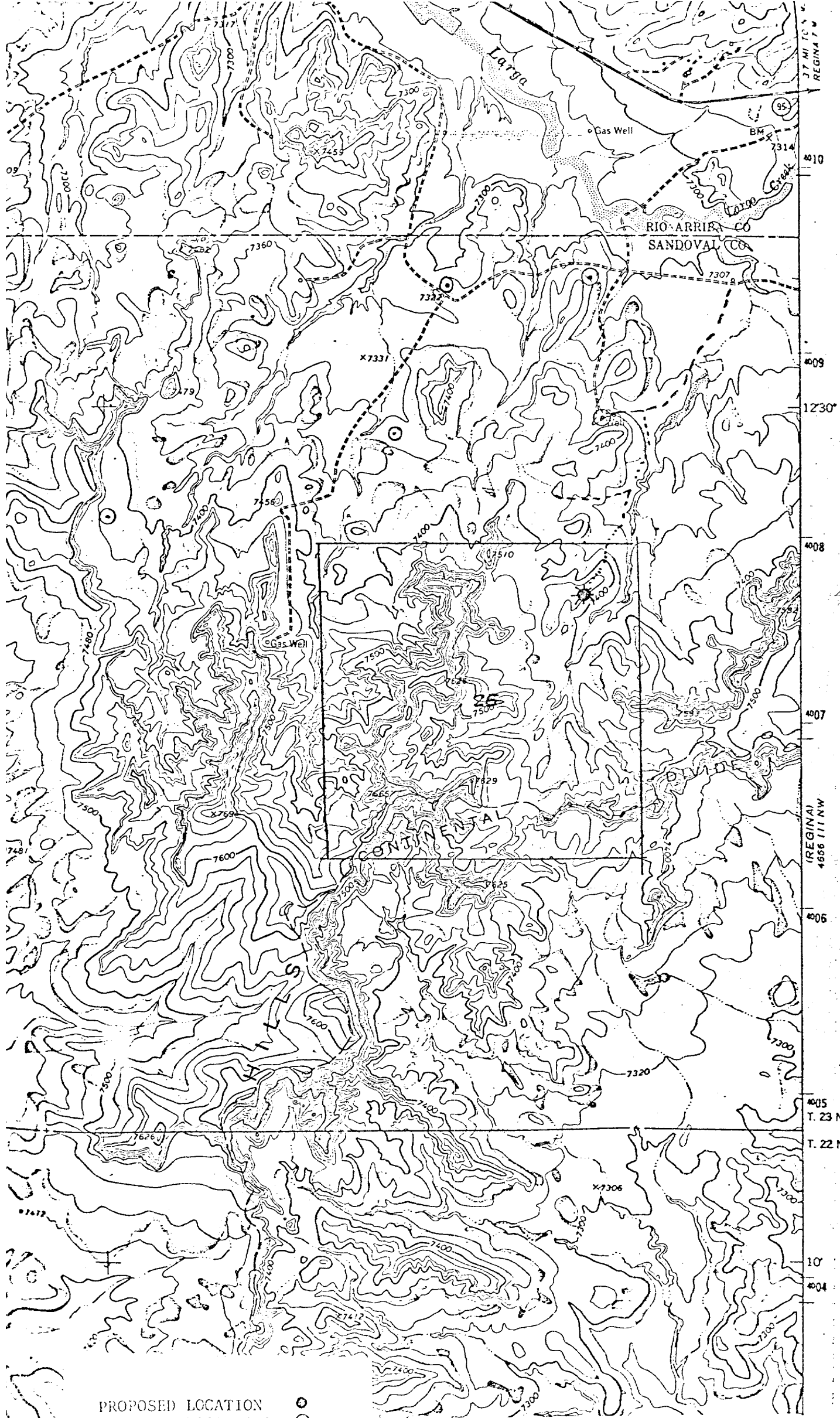
APPROVED BY

TITLE

DATE

CONDITIONS OF APPROVAL, IF ANY:

AUG 1978



PROPOSED LOCATION      ○  
EXISTING LOCATIONS      ⊙  
PROPOSED ROADS      - - -  
EXISTING ROADS      ———

Vicinity Map for  
SOUTHLAND ROYALTY CO. #Jicarilla 443 #1  
910'PML 870'FEL Sec 26-T23N-R2W  
SANDOVAL COUNTY, NEW MEXICO