

UNITED STATES
DEPARTMENT OF THE INTERIOR
GEOLOGICAL SURVEY

APPLICATION FOR PERMIT TO DRILL, DEEPEN, OR PLUG BACK

1a. TYPE OF WORK
DRILL ☒ DEEPEN ☐ PLUG BACK ☐b. TYPE OF WELL
OIL WELL ☒ GAS WELL ☐ OTHER ☐ SINGLE ZONE ☒ MULTIPLE ZONE ☐

2. NAME OF OPERATOR

Dave M. Thomas, Jr.

3. ADDRESS OF OPERATOR

P.O. Box 2026 Farmington, NM 87401

4. LOCATION OF WELL (Report location clearly and in accordance with any State requirements.)*
At surface

790' FNL, 1850' FWL

At proposed prod. zone

Same

14. DISTANCE IN MILES AND DIRECTION FROM NEAREST TOWN OR POST OFFICE*

Not applicable

15. DISTANCE FROM PROPOSED*
LOCATION TO NEAREST
PROPERTY OR LEASE LINE, FT.
(Also to nearest drig. unit line, if any)

790'

18. DISTANCE FROM PROPOSED LOCATION*
TO NEAREST WELL, DRILLING, COMPLETED,
OR APPLIED FOR, ON THIS LEASE, FT.

19. PROPOSED DEPTH

7500

17. NO. OF ACRES ASSIGNED
TO THIS WELL

160.08

20. ROTARY OR CABLE TOOLS

Rotary

21. ELEVATIONS (Show whether DF, RT, GR, etc.)

7309' GR

22. APPROX. DATE WORK WILL START*

Sept. 10, 1978

23.

PROPOSED CASING AND CEMENTING PROGRAM

SIZE OF HOLE	SIZE OF CASING	WEIGHT PER FOOT	SETTING DEPTH	QUANTITY OF CEMENT
12-1/4"	8-5/8"	24.0	250'	250 Sacks
7-7/8"	4-1/2"	10.50&11.60	7500'	To be determined

It is proposed to drill this well with rotary tools, using oil base mud as circulaion medium, through the Dakota Formation. Possible productive zones in the Dakota Formation will be completed Production casing will be cemented in such a manner as to protect the Pictured Cliffs Formation.

Estimated Formation Tops

Pictured Cliffs	2930'	Green horn	7020'
Cliff House	4500'	Graneros	7080'
Gallup	6040'	Dakota	7100'

The NW/4 Section 35 is dedicated to this well.

The natural gas produced from this well is committed.

IN ABOVE SPACE DESCRIBE PROPOSED PROGRAM: If proposal is to deepen or plug back, give data on present productive zone and proposed new productive zone. If proposal is to drill or deepen directionally, give pertinent data on subsurface locations and measured and true vertical depths. Give blowout preventer program, if any.

24. For: Dave M. Thomas, Jr.

President, Walsh Engin.

SIGNED

Ewell N. Walsh, P.E.

TITLE

& Production Corp.

DATE 8-18-78

(This space for Federal or State office use)

PERMIT NO.

APPROVAL DATE

APPROVED BY

TITLE

CONDITIONS OF APPROVAL, IF ANY:

ok Frank

*See Instructions On Reverse Side

U. S. GEOLOGICAL SURVEY
DURANGO, COLO.

RECEIVED

AUG 22 1978

NEW MEXICO OIL CONSERVATION COMMISSION
WELL LOCATION AND ACREAGE DEDICATION PLAT

Form O-41
Supersedes O-120
Effective 1-1-78

All distances must be from the outer boundaries of the Section

Operator DAVE M. THOMAS JR.			Lease CHACON JICARILLA APACHE "D"		Well No. 103
Unit Letter C	Section 35	Township 23N	Range 3W	County Sandoval	
Actual Footage Location of Well:					
790	feet from the	North	line and	1850	feet from the West line
Ground Level Elev. 7309	Producing Formation Dakota		Pool Chacon Dakota Associated		Dedicated Acreage 160.08

1. Outline the acreage dedicated to the subject well by colored pencil or hatchure marks on the plat below.
2. If more than one lease is dedicated to the well, outline each and identify the ownership thereof (both as to working interest and royalty).
3. If more than one lease of different ownership is dedicated to the well, have the interests of all owners been consolidated by communitization, unitization, force-pooling, etc?

☐ Yes ☐ No If answer is "yes," type of consolidation _____

If answer is "no," list the owners and tract descriptions which have actually been consolidated. (Use reverse side of this form if necessary.) _____

No allowable will be assigned to the well until all interests have been consolidated (by communitization, unitization, forced-pooling, or otherwise) or until a non-standard unit, eliminating such interests, has been approved by the Commission.

CERTIFICATION

I hereby certify that the information contained herein is true and complete to the best of my knowledge and belief.

For: **Dave M. Thomas Jr.**
Name _____

Ewell N. Walsh, P.E.

Position

President, Walsh

Company

Eng. & Prod. Corp.

Date

August 18, 1978

I hereby certify that the well location shown on this plat was plotted from field notes of actual surveys made by me or under my supervision, and that the same is true and correct to the best of my knowledge and belief.

Date Surveyed

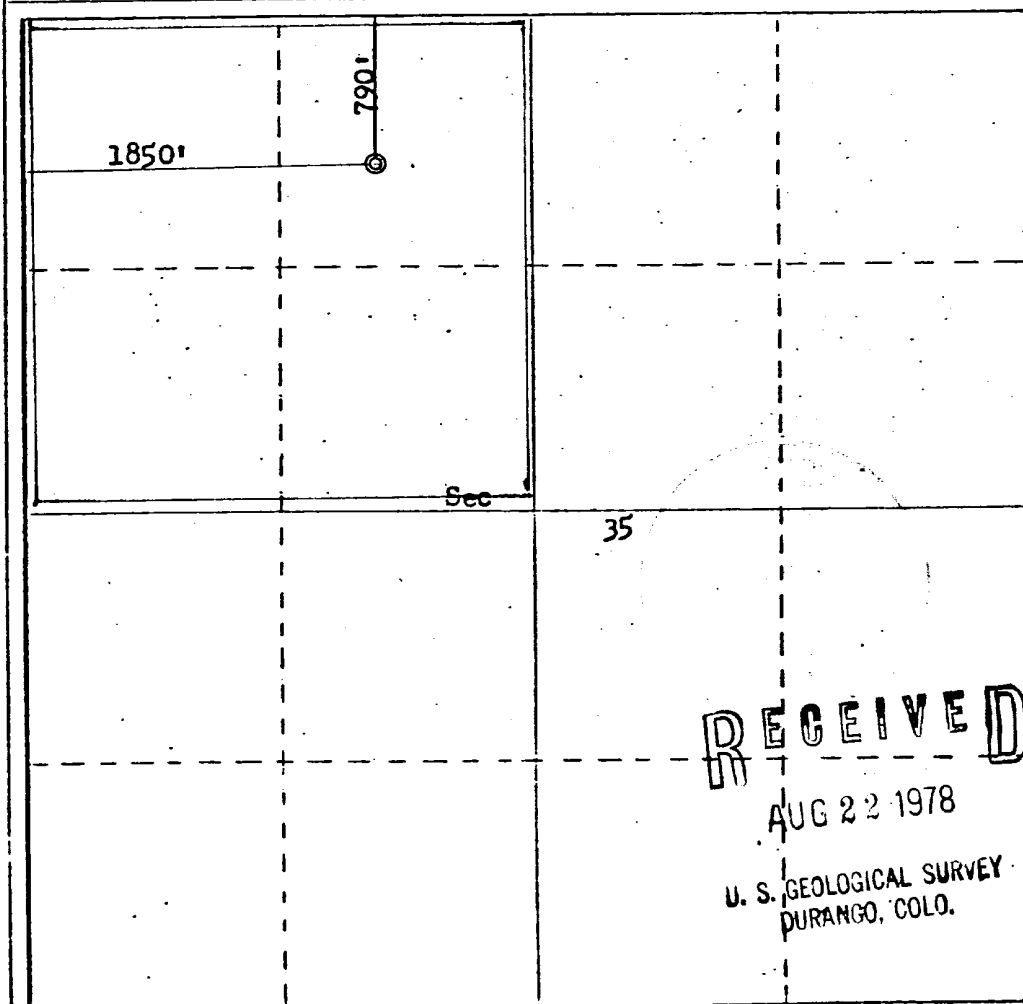
July 22, 1978

Registered Professional Engineer and or Land Surveyor

Fred B. Kerr, Jr.

Certificate No. **3950**

3950

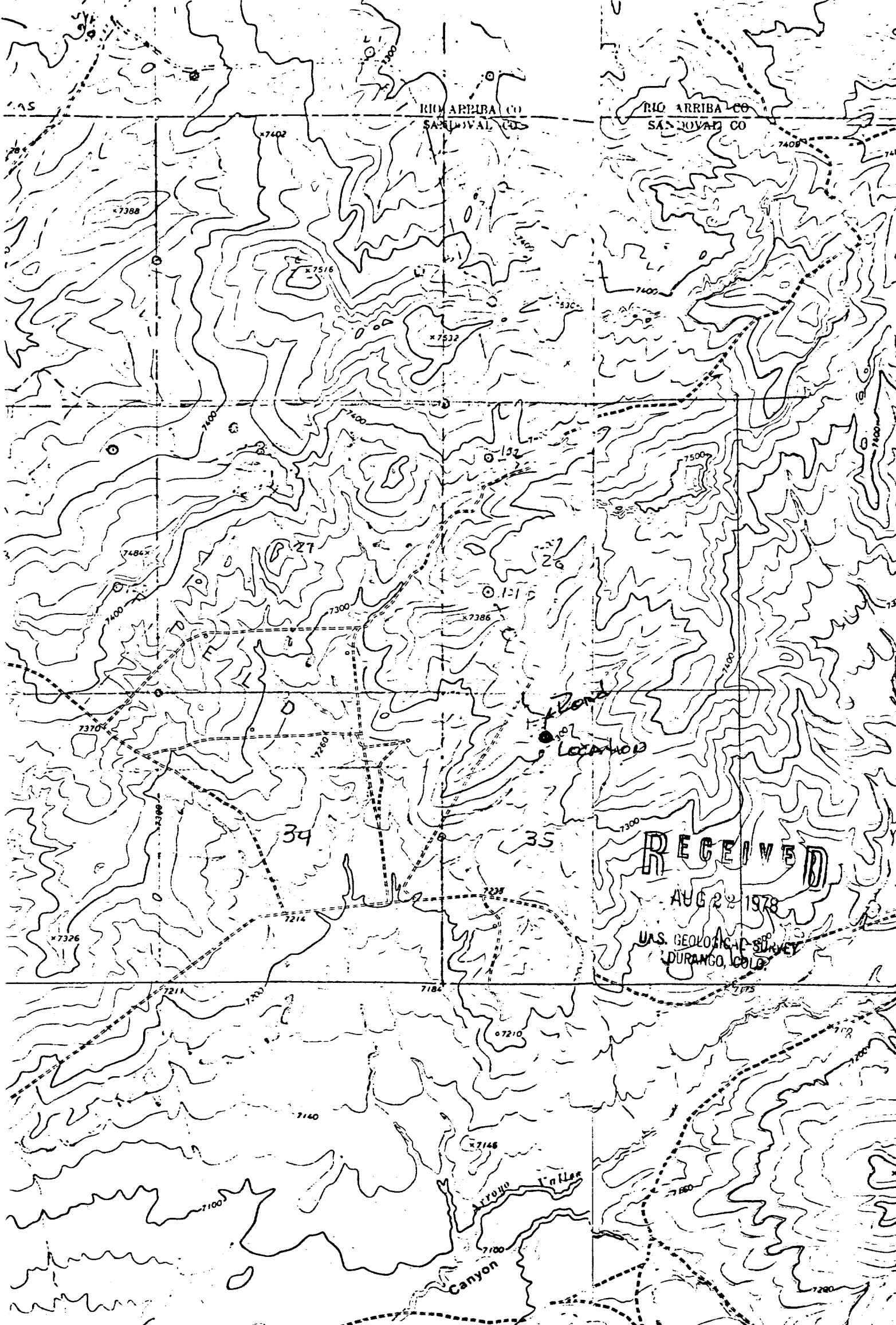


RECEIVED

AUG 22 1978

**U. S. GEOLOGICAL SURVEY
DURANGO, COLO.**

0 330 660 990 1320 1650 1980 2310 2640 2000 1800 1600 1400 1200 1000 800 600



Vicinity Map for
DAVE M. THOMAS JR. #103 CHACON JICARILLA APACHE TRACT
790' FNL 1850' FWL Sec 35-T23N-23W
SANDOVAL COUNTY, NEW MEXICO

Mentee

Five