

UNITED STATES
DEPARTMENT OF THE INTERIOR
GEOLOGICAL SURVEY

APPLICATION FOR PERMIT TO DRILL, DEEPEN, OR PLUG BACK

1a. TYPE OF WORK

DRILL ☒DEEPEN ☐PLUG BACK ☐

b. TYPE OF WELL

OIL
WELL ☒GAS
WELL ☐

OTHER

SINGLE
ZONE ☒MULTIPLE
ZONE ☐

2. NAME OF OPERATOR

Noel Reynolds Dba Torreon Oil Co.

3. ADDRESS OF OPERATOR

Box 356 Flora Vista, N.M. 87415

4. LOCATION OF WELL (Report location clearly and in accordance with any State requirements.)*

At surface

J 2310 ft. North of the South line and
At proposed prod. zone 2310 ft. West of the East line.

14. DISTANCE IN MILES AND DIRECTION FROM NEAREST TOWN OR POST OFFICE*

25 Mi. Southwest of Cuba, N.M.

15. DISTANCE FROM PROPOSED*

LOCATION TO NEAREST
PROPERTY OR LEASE LINE, FT.
(Also to nearest drlg. unit line, if any north line.)

330 ft. from

16. NO. OF ACRES IN LEASE

160

18. DISTANCE FROM PROPOSED LOCATION*
TO NEAREST WELL, DRILLING, COMPLETED,
OR APPLIED FOR, ON THIS LEASE, FT.

710

19. PROPOSED DEPTH

1050

17. NO. OF ACRES ASSIGNED
TO THIS WELL

-40 joint

20. ROTARY OR CABLE TOOLS

Rotary

21. ELEVATIONS (Show whether DF, RT, GR, etc.)

6773

22. APPROX. DATE WORK WILL START*

8/25/78

23.

PROPOSED CASING AND CEMENTING PROGRAM

SIZE OF HOLE	SIZE OF CASING	WEIGHT PER FOOT	SETTING DEPTH	QUANTITY OF CEMENT
8 3/4	7"	20 lb.	31 ft.	Circulate to surface
6 3/4	4 1/2	9 1/2 lb.	1050	50 Sx.

Propose to drill new well to test the Minafee formation at a depth less than 1050 ft. if production is obtained 4 1/2 in. casing will be set and cemented and well put on production.

Blowout equipment equipment will be furnished by the contractor if needed, However this a known low pressure area.



IN ABOVE SPACE DESCRIBE PROPOSED PROGRAM: If proposal is to deepen or plug back, give data on present productive zone and proposed new productive zone. If proposal is to drill or deepen directionally, give pertinent data on subsurface locations and measured and true vertical depths. Give blowout preventer program, if any.

24.

SIGNED

Noel Reynolds

TITLE

operator

DATE

7-21-78

(This space for Federal or State office use)

PERMIT NO.

APPROVAL DATE

RECEIVED

APPROVED BY

TITLE

CONDITIONS OF APPROVAL, IF ANY:

JUL 21 1978

U. S. GEOLOGICAL SURVEY
DURANGO, COLO.

NEW MEXICO OIL CONSERVATION COMMISSION
WELL LOCATION AND ACREAGE DEDICATION PLAT

Form C-102
Supersedes C-124
Effective 1-1-65

All distances must be from the outer boundaries of the Section.

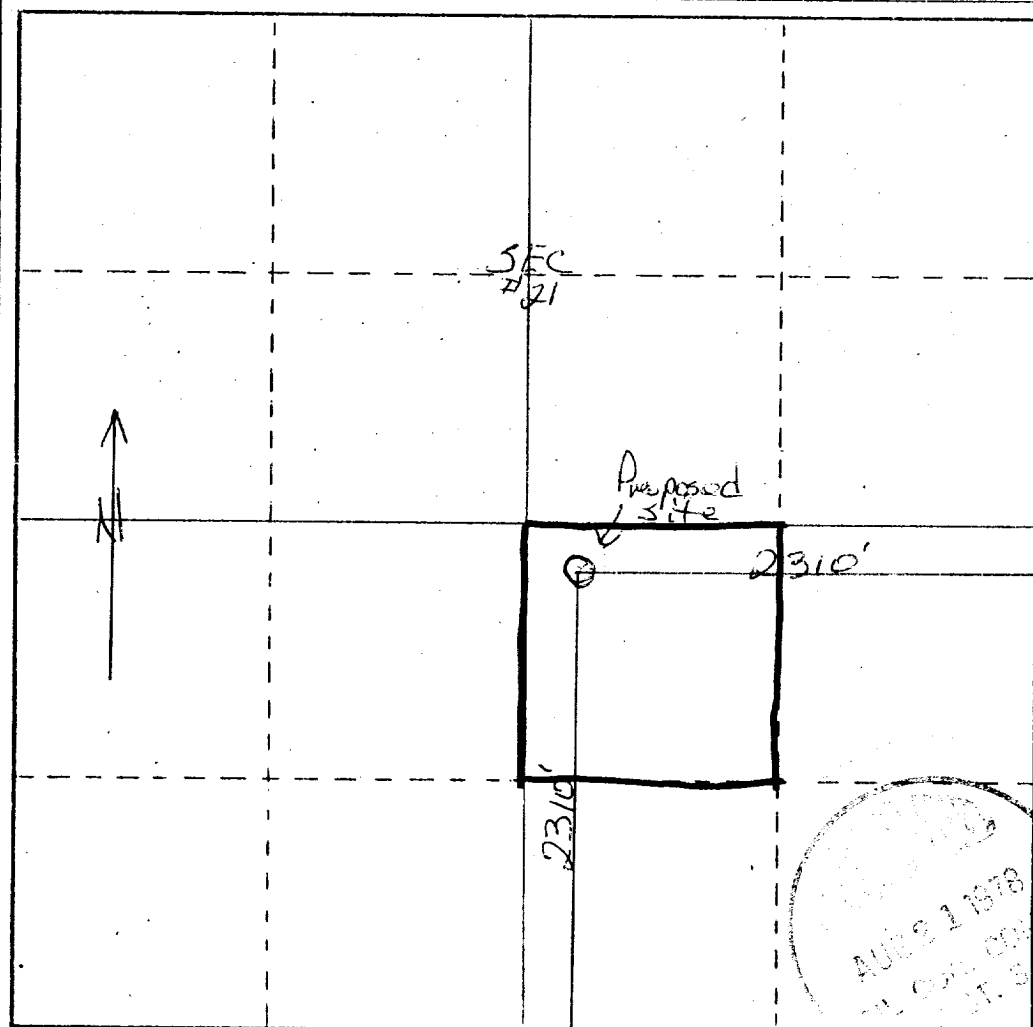
Operator <i>Torrion Oil Company</i> <i>Noel Reynolds</i>		Lease <i>San Luis Federal</i> <i>SR 031167-1</i>		Well No. <i>4</i>
Unit Letter <i>J</i>	Section <i>21</i>	Township <i>13N</i>	Range <i>3W</i>	County <i>Sandoval</i>
Actual Footage Location of Well: <i>2310</i> feet from the <i>South</i> line and <i>2310</i> feet from the <i>East</i> line				
Ground Level Elev. <i>6773</i>	Producing Formation <i>Manefee</i>	Pool <i>San Luis Manefee</i>	Dedicated Acreage: <i>40</i> Acres	

1. Outline the acreage dedicated to the subject well by colored pencil or hatchure marks on the plat below.
2. If more than one lease is dedicated to the well, outline each and identify the ownership thereof (both as to working interest and royalty).
3. If more than one lease of different ownership is dedicated to the well, have the interests of all owners been consolidated by communitization, unitization, force-pooling, etc?

☐ Yes ☐ No If answer is "yes," type of consolidation one ownership

If answer is "no," list the owners and tract descriptions which have actually been consolidated. (Use reverse side of this form if necessary.)

No allowable will be assigned to the well until all interests have been consolidated (by communitization, unitization, forced-pooling, or otherwise) or until a non-standard unit, eliminating such interests, has been approved by the Commission.



CERTIFICATION

I hereby certify that the information contained herein is true and complete to the best of my knowledge and belief.

Noel Reynolds
Name

operator
Position

Company

Date *6/13/73*

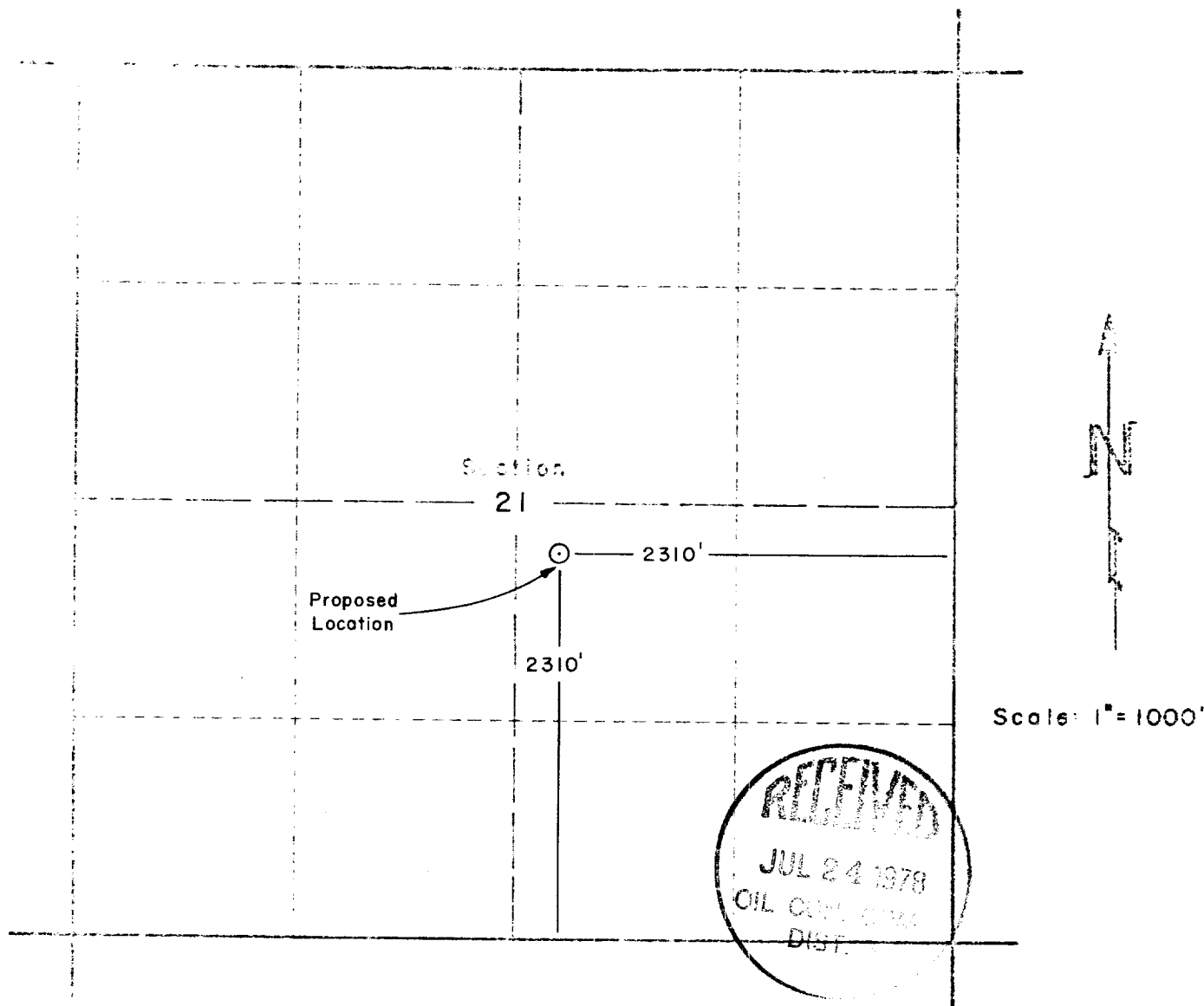
I hereby certify that the well location shown on this plat was plotted from field notes of actual surveys made by me or under my supervision, and that the same is true and correct to the best of my knowledge and belief.

Date Surveyed *7/20/73*

Registered Professional Engineer and/or Land Surveyor

Certificate No.





WELL LOCATION: TORREON OIL CO. (Noel Reynolds) No. 4 San Luis-Federal

Located 2310 feet North of the South line and 2310 feet West of the East line of Section 21,
 Township 18 North, Range 3 West, New Mexico Principal Meridian
 Sandoval Co. N.M.

Existing ground elevation determined at 6773 feet based on U.S.G.S. Datum.

I hereby certify the above plat represents a survey
 made under my supervision and that it is accurate
 to the best of my knowledge and belief.

Frederick H. Reed

FREDERICK H. REED
 Registered Land Surveyor

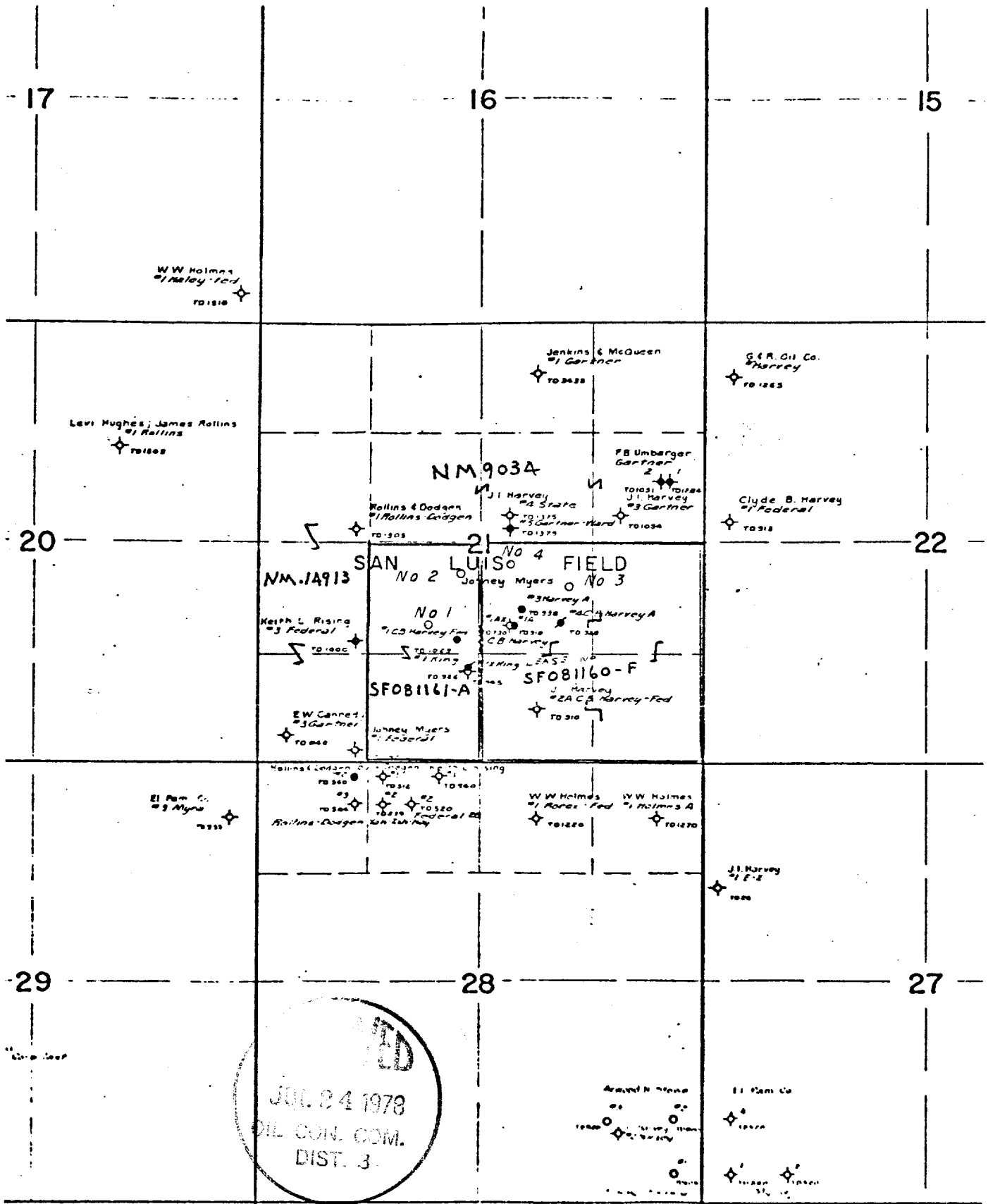


TORREON OIL CO.
 Aztec, New Mexico

WELL LOCATION PLAT
 No. 4 San Luis Federal
 Sec. 21, T 18 N, R 3 W
 Sandoval Co., N.M.

CLARK-REED & ASSOC.
 Durango, Colorado

DATE: July 20, 1978
 FILE NO. 78047



T
18
N

TORREON OIL CO

EXHIBIT 3

No's 1-2-3-4 San Luis Federal

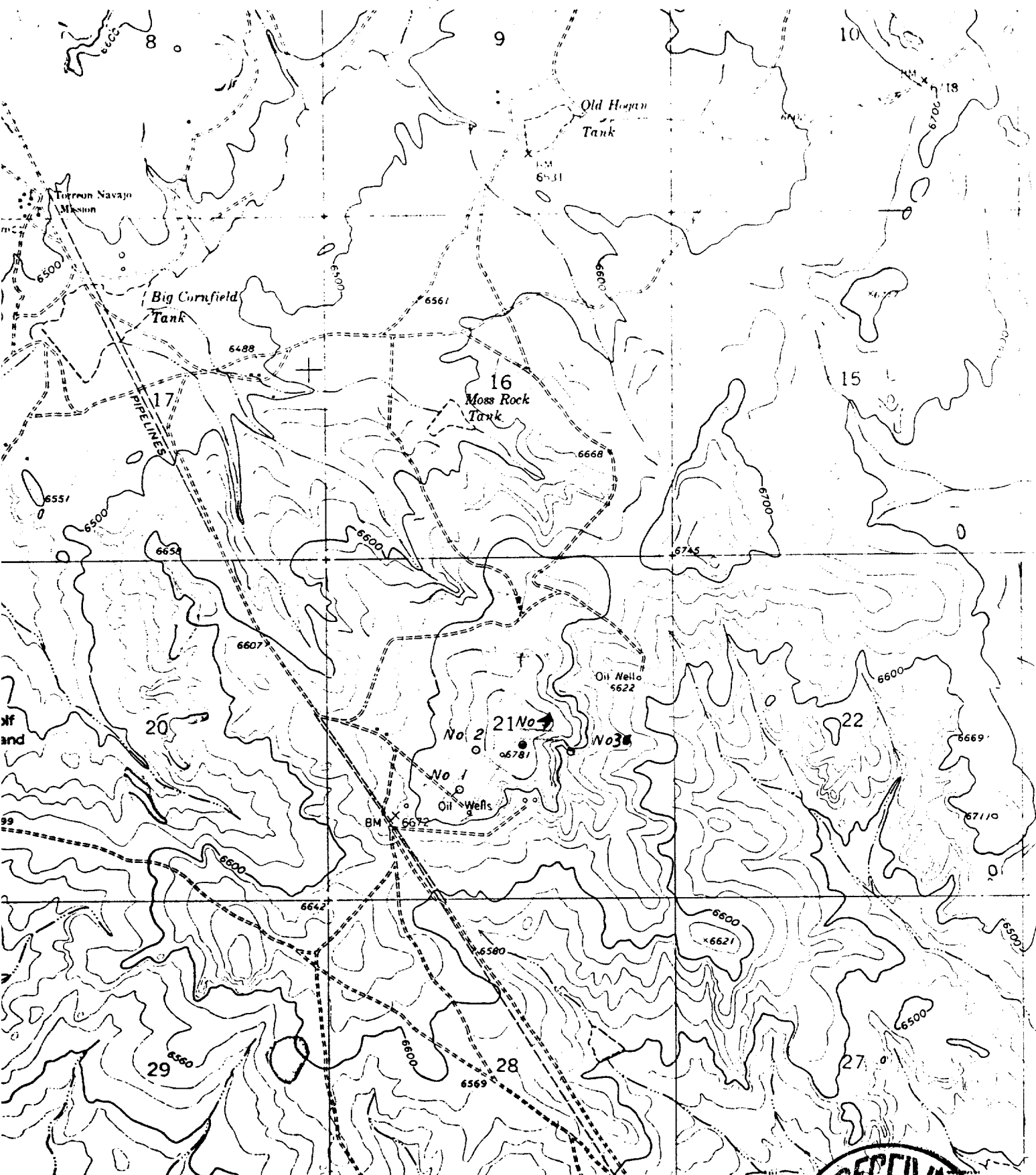


EXHIBIT 4.

LOCATION PLAT

TORREON OIL COMPANY

NO. 1 San Luis - Federal

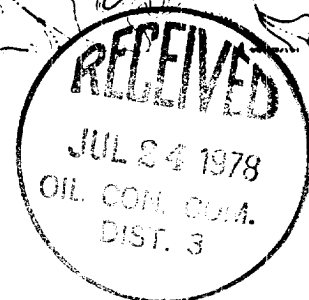
NO. 2 " "

NO. 3 " "

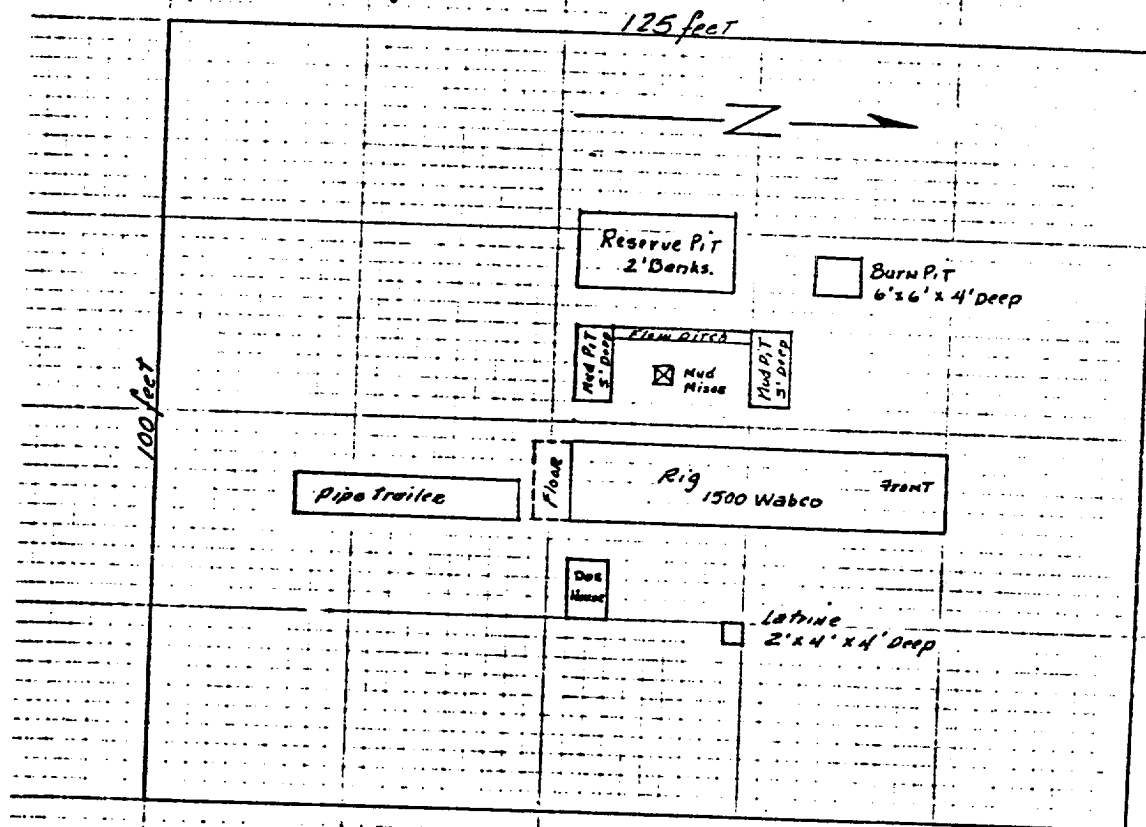
NO. 4 " "

proposed roads

SANDOVAL CO. NEW MEXICO



Location AND Equipment Lay-out



No camp or Airstrip associated with this lease

EXHIBIT 2

TORREON OIL CO.

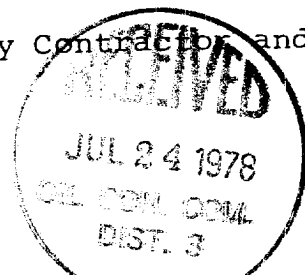
No.'s 1-2-3-4 San Luis - Federal



DEVELOPMENT PLAN FOR SURFACE USE:

A. Torreon Oil Co.
No. 4 San Luis Federal
NW SE; Sec 21 T18N R3W
Sandoval Co. N.M.

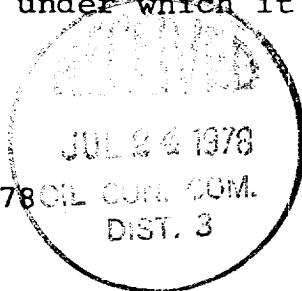
1. Existing Roads: See Exhibit No. 4.
2. Planned Access Road: See Exhibit No. 4. It is planned to use the existing roads. Approximately 2000 feet of new road will be constructed as indicated by green lines on exhibit #4. All necessary culverts will be installed. Very light grading will be done at present, improved as needed.
3. Location of Existing Wells: See Exhibit No. 3.
4. Location of Production Facilities: This is a proposed oil well, all production equipment will be located on the wellsite, 1 small pumping unit, All Pipelines to be buried below surface.
5. Location and Type of Water Supply: Fresh water for drilling will be hauled from Cuba, N.M. Approximately 25 miles, and stored in 400 barrel tank.
6. Source of Construction Materials: None required.
7. Handling of Waste Materials:
 - (a) Liquid wastes to be retained in earthen reserve pit.
 - (b) Burnable waste to be placed in a burn pit and burned at appropriate times.
 - (c) Non burnable waste to be placed near burn pit and buried or hauled off on completion.
 - (d) Latrine facilities to be furnished by Contractor and waste hole filled on completion.



8. Ancillary Facilities: None Required
9. Wellsite Layout: See Exhibit #2
10. Plans for Restoration of Surface: Upon Completion of drilling, the waste pits to be fenced until liquids evaporate sufficiently for filling. Fill and grade down to conform as near as possible to topography and reseed per BLM specifications.
11. Other Information: The proposed road and location pad is in clayey sandy alluvial soil. Vegetation is small low growing sage brush, and thinly spaced Juniper trees. This location will not require much dirt work.
12. Operator's Representative: Noël Reynolds will be acting agent for this operation. Office and residence telephone is 505-334-2867, office 505-325-4180. Joe Morrow, Farmington Highway, Phone 505-632-2880. Will be drilling Contractor, Robert E. Lauth Durango, Colo. will be the Consulting Geologist.
13. Certification:

I Hereby certify that I am familiar with the conditions which presently exist on the proposed drillsite and roadway. That the statements made in this plan are to the best of my knowledge, true and correct; and that the work associated with the operations proposed herein will be supervised by Noel Reynolds. All subcontract work to be in conformity with this plan and the terms and conditions under which it is approved.

Date: July 20, 1978



Noel Reynolds

Noel Reynolds
Operator