

UNITED STATES
DEPARTMENT OF THE INTERIOR
GEOLOGICAL SURVEY

APPLICATION FOR PERMIT TO DRILL, DEEPEN, OR PLUG BACK

1a. TYPE OF WORK
DRILL ☒ DEEPEN ☐ PLUG BACK ☐b. TYPE OF WELL
OIL WELL ☐ GAS WELL ☒ OTHER ☐ SINGLE ZONE ☒ MULTIPLE ZONE ☐

2. NAME OF OPERATOR

Benson Mineral Group, Inc.

3. ADDRESS OF OPERATOR

3200 Anaconda Tower, 555 17th St., Denver, CO 80202

4. LOCATION OF WELL (Report location clearly and in accordance with any State requirements.)*
At surface

800' FSL & 1660' FEL Section 21-T22N-R6W

At proposed prod. zone

Same

14. DISTANCE IN MILES AND DIRECTION FROM NEAREST TOWN OR POST OFFICE*

6 miles south of Counselor, New Mexico

15. DISTANCE FROM PROPOSED*

LOCATION TO NEAREST
PROPERTY OR LEASE LINE, FT.
(Also to nearest drg. unit line, if any)

800'

16. NO. OF ACRES IN LEASE

160

17. NO. OF ACRES ASSIGNED
TO THIS WELL

160

18. DISTANCE FROM PROPOSED LOCATION*
TO NEAREST WELL, DRILLING, COMPLETED,
OR APPLIED FOR, ON THIS LEASE, FT.

None

19. PROPOSED DEPTH

2070

20. ROTARY OR CABLE TOOLS

Rotary

21. ELEVATIONS (Show whether DF, RT, GR, etc.)

6993 GR

22. APPROX. DATE WORK WILL START*

As soon as permitted

23. PROPOSED CASING AND CEMENTING PROGRAM

| SIZE OF HOLE | SIZE OF CASING | WEIGHT PER FOOT | SETTING DEPTH | QUANTITY OF CEMENT |
|--------------|----------------|-----------------|---------------|--------------------|
| 9-5/8" | 7" used | 23 | 100 | 50 sx. circ. |
| 6 1/4" | 4 1/2" new | 9.5 | 2070 | 215 sx. circ. |

The above well is being drilled to evaluate the Chacra formation. Completion intervals and stimulation program will be determined from the study of logs. This acreage is not dedicated to a gas purchaser. Additional information required by NTL-6 for the application to drill and a Multi-Point Surface Use Plan are attached.

IN ABOVE SPACE DESCRIBE PROPOSED PROGRAM: If proposal is to deepen or plug back, give data on present productive zone and proposed new productive zone. If proposal is to drill or deepen directionally, give pertinent data on subsurface locations and measured and true vertical depths. Give blowout preventer program, if any.

24.

SIGNED

Paul C. Ellison

TITLE Production Manager

DATE 9-28-78

(This space for Federal or State office use)

PERMIT NO.

APPROVAL DATE

APPROVED BY

TITLE

CONDITIONS OF APPROVAL, IF ANY:

RECEIVED

OCT 2 1978

U. S. GEOLOGICAL SURVEY
DURANGO, COLO.

*See Instructions On Reverse Side

NEW MEXICO OIL CONSERVATION COMMISSION
WELL LOCATION AND ACREAGE DEDICATION PLAT

Form C-102
Supersedes C-128
Effective 1-1-65

All distances must be from the outer boundaries of the Section.

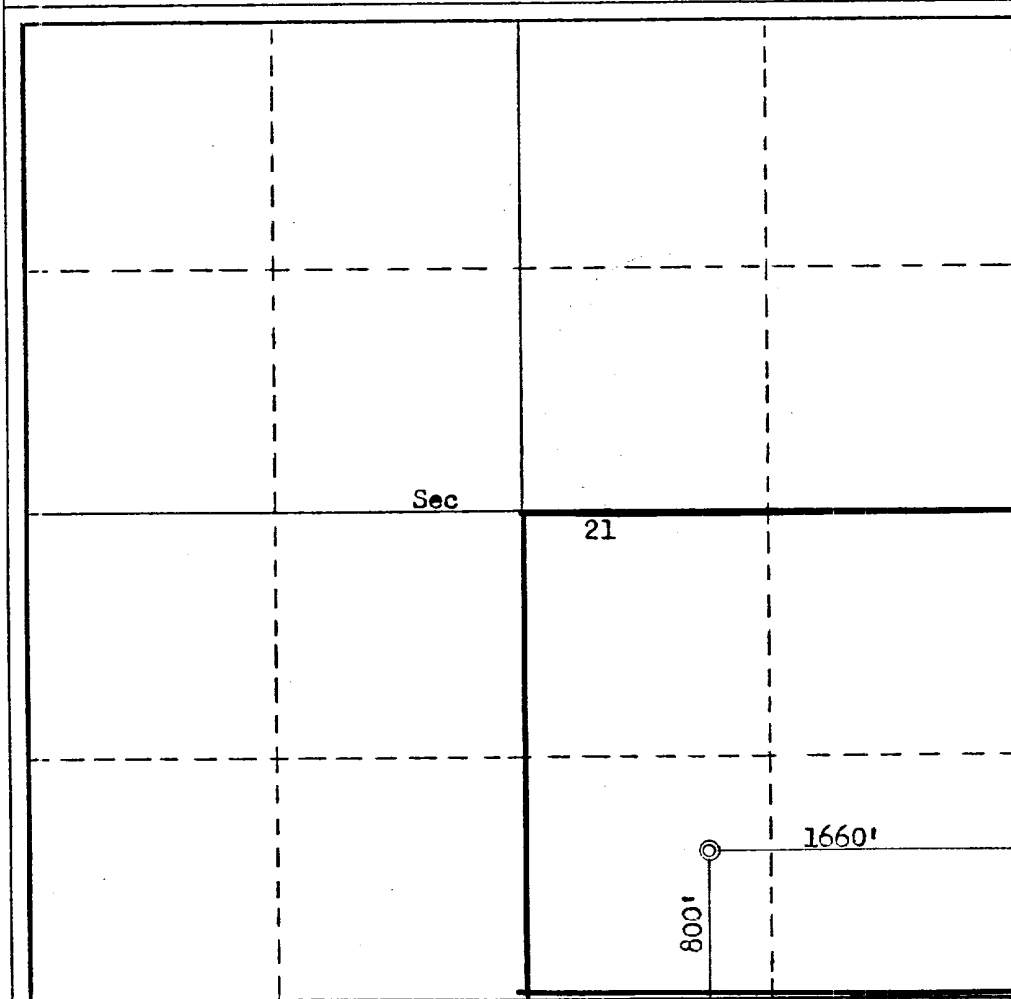
| | | | | |
|---|--------------------------------------|---|--|---------------------------|
| Operator BENSON MINERAL GROUP, INC. | | Lease NAVAJO 21-22-6 | | Well No. 1 |
| Unit Letter 0 | Section 21 | Township 22N | Range 6W | County Sandoval |
| Actual Footage Location of Well: 800 feet from the South line and 1660 feet from the East line | | | | |
| Ground Level Elev. 5993 | Producing Formation Chacra | Pool Wildcat Pueyo Chacra | Dedicated Acreage: 160 Acres | |

1. Outline the acreage dedicated to the subject well by colored pencil or hatchure marks on the plat below.
2. If more than one lease is dedicated to the well, outline each and identify the ownership thereof (both as to working interest and royalty).
3. If more than one lease of different ownership is dedicated to the well, have the interests of all owners been consolidated by communitization, unitization, force-pooling, etc?

☐ Yes ☐ No If answer is "yes," type of consolidation _____

If answer is "no," list the owners and tract descriptions which have actually been consolidated. (Use reverse side of this form if necessary.) _____

No allowable will be assigned to the well until all interests have been consolidated (by communitization, unitization, forced-pooling, or otherwise) or until a non-standard unit, eliminating such interests, has been approved by the Commission.



CERTIFICATION

I hereby certify that the information contained herein is true and complete to the best of my knowledge and belief.

Paul C. Ellison

Name

Paul C. Ellison

Position

Production Manager

Company

Benson Mineral Group, Inc

Date

September 28, 1978

I hereby certify that the well location shown on this plat was plotted from field notes of actual surveys made by me or under my supervision, and that the same is true and correct to the best of my knowledge and belief.

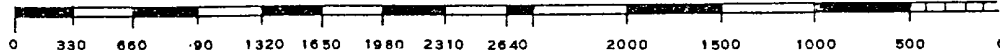
Date Surveyed

September 28, 1978

Registered Professional Engineer and/or Land Surveyor

Fred B. Kerr Jr.
Fred B. Kerr Jr.

Certificate No. 3950
KERR, JR.



SUPPLEMENTAL INFORMATION TO FORM 9-331C
REQUIRED BY NTL-6

Navajo 21-22-6 Well #1
800' FSL & 1660' FEL Section 21-T22N-R6W
Sandoval County, New Mexico

The geologic name of the surface formation is: Tertiary Nacimiento

The estimated tops of important geological formations bearing hydrocarbons to be drilled are:

| <u>Formation</u> | <u>Depth</u> | <u>Elevation</u> |
|------------------|--------------|------------------|
| Chacra | 1893 | +5100 |
| Total Depth | 2070 | |

Estimated K.B. elevation: 6993 GR

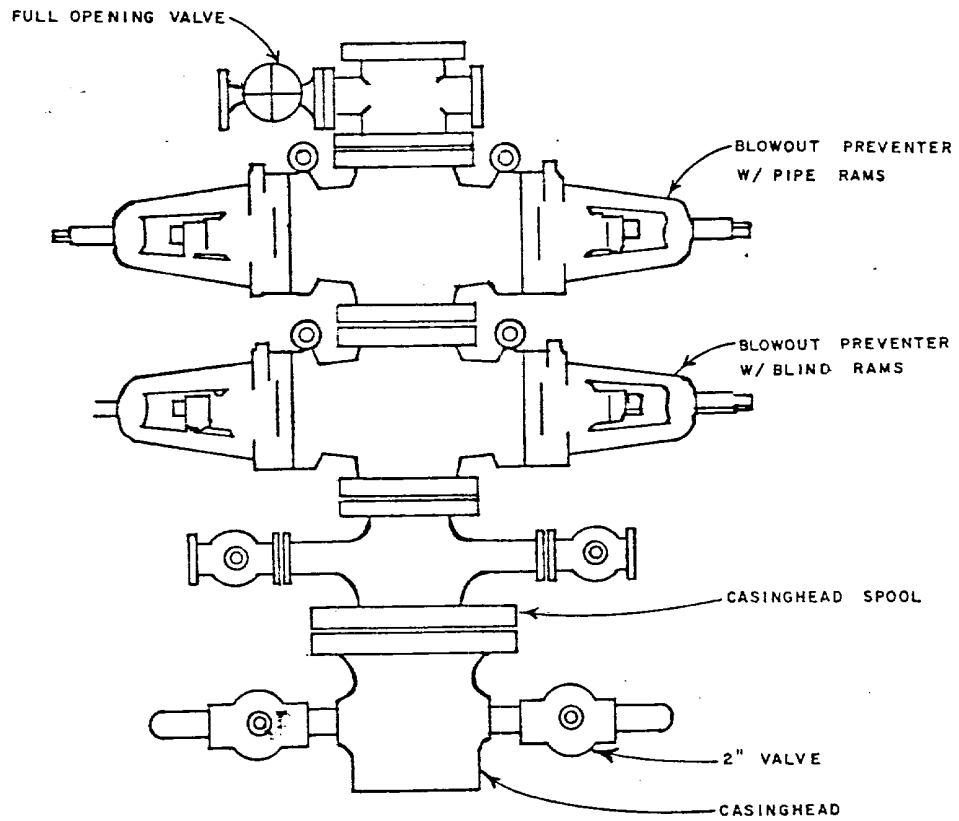
| <u>Estimated Depth</u> | <u>Casing Size</u> | <u>Casing Weight</u> | <u>Hole Size</u> | <u>Sacks Cement</u> | <u>Type</u> |
|----------------------------|------------------------|--------------------------|----------------------|-------------------------|--|
| 100 | 7" Used | 23 | 9 5/8" | 50 | Class "B" 2% CaCl ₂ |
| 2070 | 4½" New | 9.5 | 6¼" | 50 165 | Class "B" Class "B" 50-50 Poz mix, 6% gel with ¼# Celloflake/sack |

Benson Mineral Group Inc.'s standard blowout prevention will be employed, see the attached drawing of the preventor design.

Drilling fluid to be a low solids non-dispersed mud system.

The logging program will be as follows: Induction-Electric and Compensated Density-Gamma Ray from surface casing point to total depth.

Past experience in this area has shown that no abnormal pressures, temperatures, or hydrogen sulfide gas will be encountered.



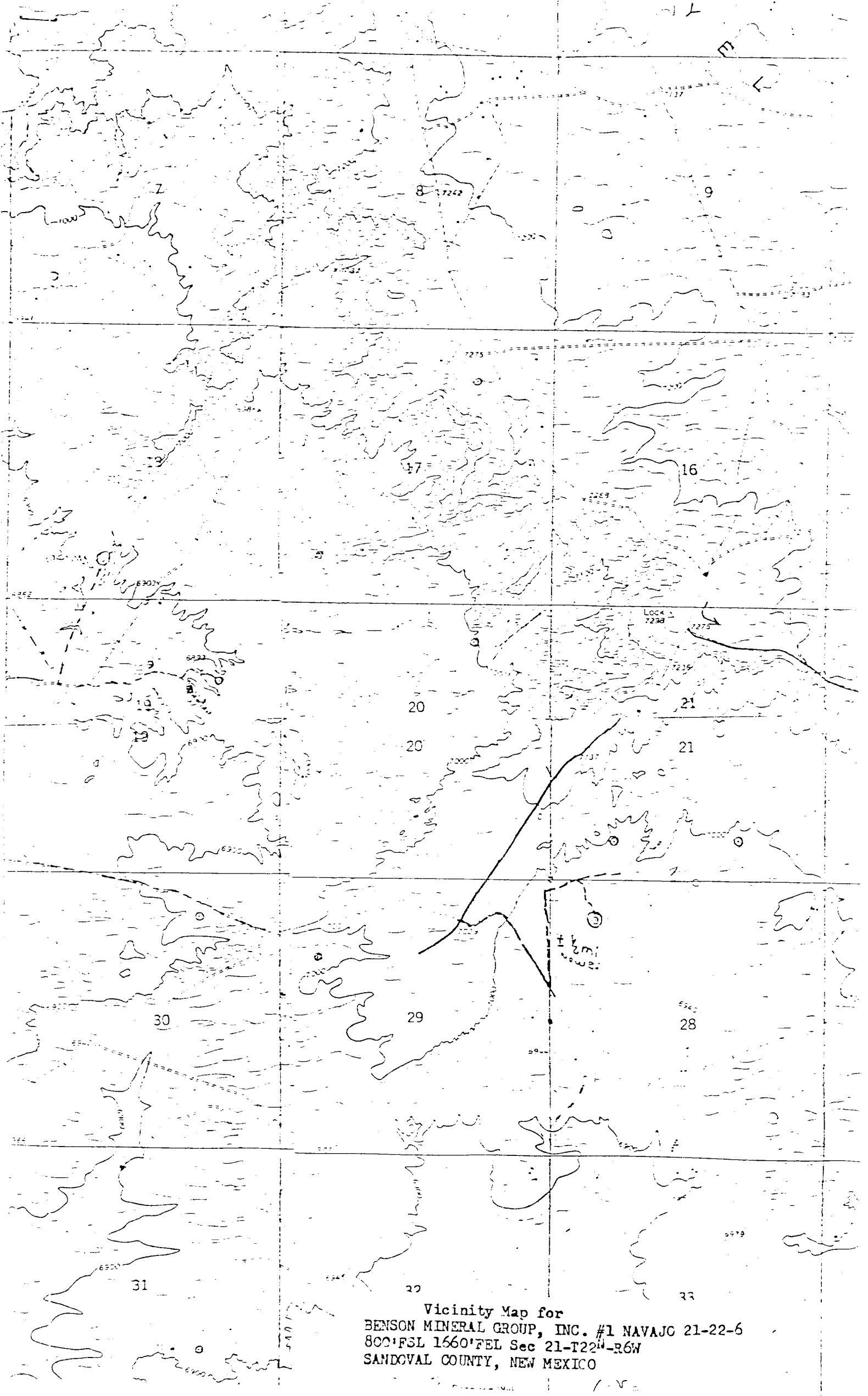
| | | | |
|---|-------|--|------------------------------------|
| BENSON MINERAL GROUP, INC. | | 3200 Anaconda Tower 555 17th Street Denver, Colorado 80202 | |
| | | | |
| STANDARD BLOWOUT PREVENTER ASSEMBLY 6" 900 SERIES | | | |
| GEOLOGY BY: | DATE: | POSTED: | APPROVED BY: DRAFTING BY: G W R |

MULTI-POINT SURFACE USE PLAN

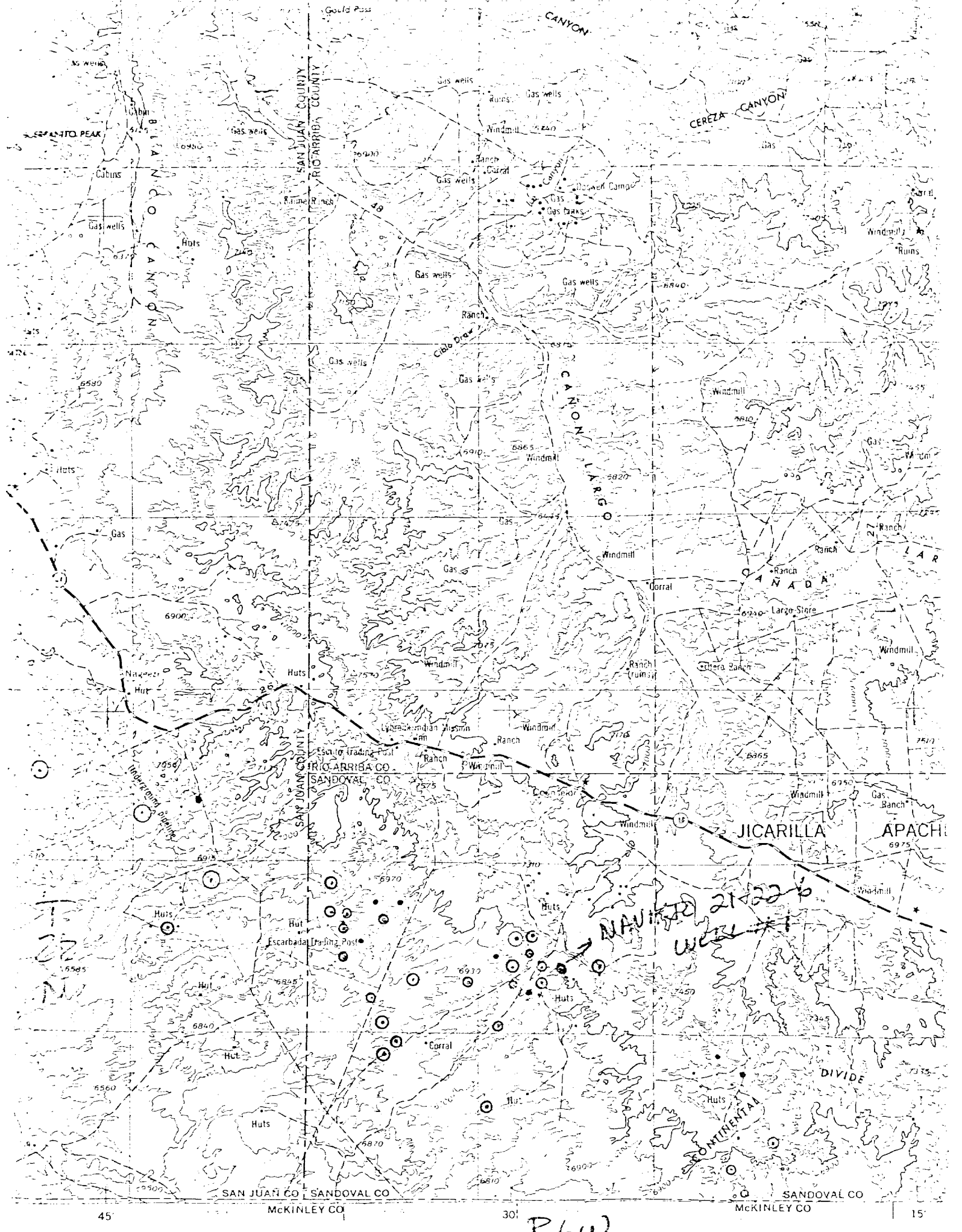
Navajo 21-22-6 Well #1
800' FSL & 1660' FEL Section 21-T22N-R6W
Sandoval County, New Mexico

1. The attached road map and sketch show the proposed route to the location and distances from towns.
2. An access road of 3000 feet will be constructed as a new permanent road to location.
3. Existing oil and gas wells within a one-mile radius of our proposed well have been spotted on the vicinity map.
4. There are no storage tanks or facilities located within a one-mile radius of our proposed location.
5. Water will be hauled by truck from various existing private water sources over existing permanent roads.
6. No construction materials will be hauled in for this location. Material from high points on location will be used to level location for proper drilling.
7. A 20' X 120' pit will be built on location to hold all drilling waste. Upon completion of well, all waste and liquid will be hauled by truck and bladed into existing roads. All other waste will be covered in 20' X 120' reserve pit.
8. There are neither airstrips nor camps in the vicinity.
9. The well site layout, reserve, burn and trash pits are shown on the attached Drill Site Specification Sheet.
10. Restoration of the surface will be accomplished by cleaning up and leveling upon completion of the well. Upon completion the reserve pit will be fenced and the drilling mud allowed to dry. The pits will then be back filled and seeded. Reseeding of the site will be carried out as detailed by the Surface Management Agency at the site examination.
11. The general topography and soil characteristics consist of fairly level terrain with vegetation of sagebrush and a few small pinion trees.

Representatives of the U.S. Geological Survey's Durango Office and Bureau of Land Management's Farmington Office will inspect the site. Cultural resources inspection will be conducted by an archaeologist from San Juan College or Salmon Ruins.
12. A Certification Statement by Benson Mineral Group, Inc.'s Representative is included.



Vicinity Map for
BENSON MINERAL GROUP, INC. #1 NAVAJO 21-22-6
800'FSL 1660'FEL Sec 21-T22-R6W
SANDOVAL COUNTY, NEW MEXICO



LEGEND
ROAD DATA 1960
Figures in red denote approximate distances in miles between stars

POPULATED PLACES

| | |
|--------------------|--------------------|
| Over 500,000 | LOS ANGELES |
| 100,000 to 500,000 | OMAHA |
| 25,000 to 100,000 | GALVESTON |
| 5,000 to 25,000 | Laramie |
| 1,000 to 5,000 | Grand Coulee |
| Less than 1,000 | Sun Valley |

RAILROADS

| | |
|----------------|---------------------------------|
| Standard gauge | Single track Double or Multiple |
| Narrow gauge | |

BOUNDARIES

| | |
|--------------------|--|
| International | |
| State | |
| County | |
| Water jurisdiction | |

Landmarks: Airport

| | |
|--------------------|--|
| Landing area | |
| Seaplane airport | |
| Seaplane anchorage | |
| Water bridge | |

ROADS

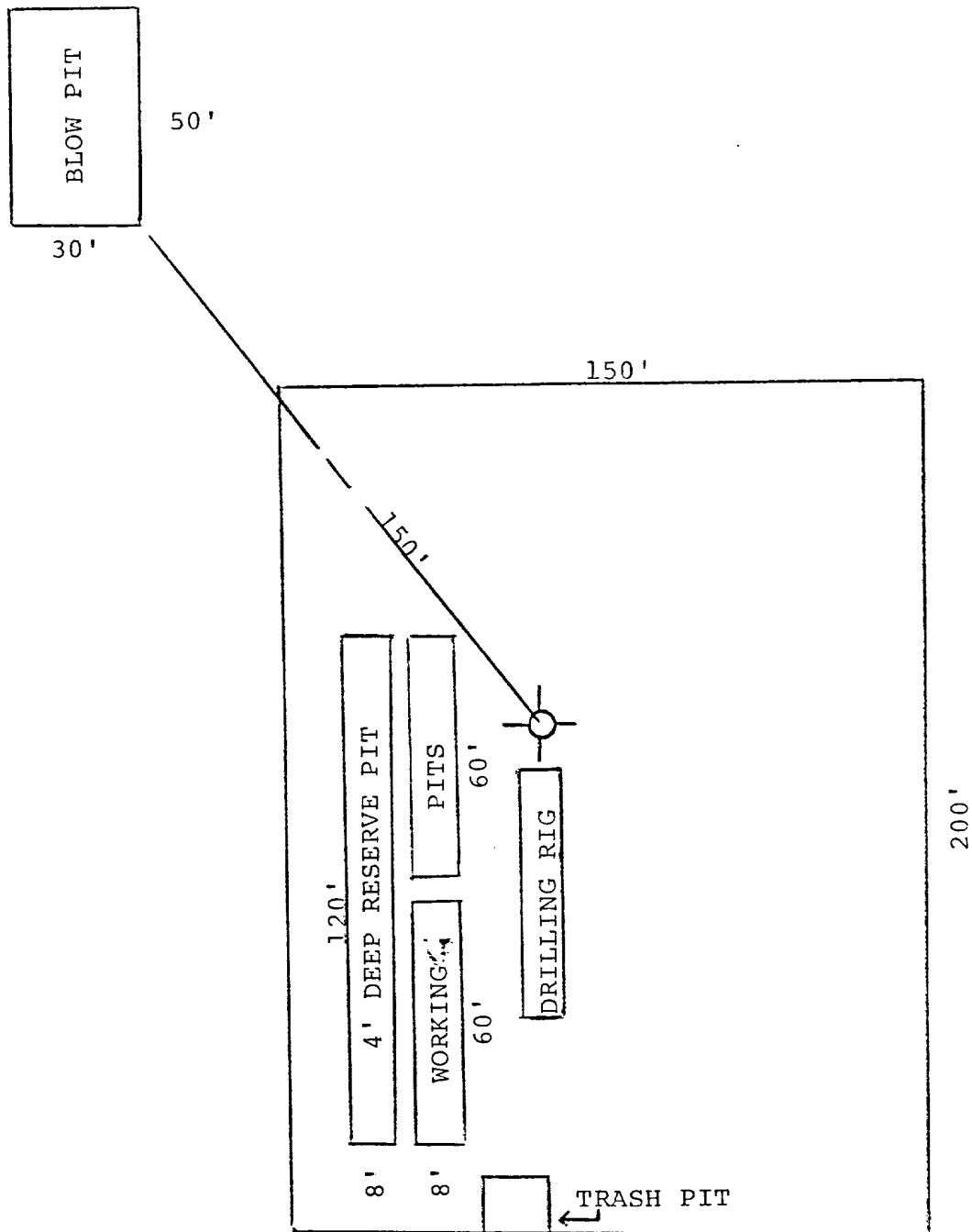
| | |
|--------------------------------------|--------------------------|
| Hard surface, heavy duty | More than two lanes wide |
| Two lanes wide, Federal route marker | |
| Hard surface, medium duty | More than two lanes wide |
| Two lanes wide, State route marker | |
| Improved light duty | |
| Unimproved dirt | |
| Trail | |

3 LANES 4 LANES

| | |
|----|--|
| 15 | |
| 30 | |

Landmarks: School; Church; Other

| | |
|----------------------------|--|
| Horizontal control point | |
| Spot elevation in feet | |
| Marsh or swamp | |
| Intermittent or dry stream | |
| Power line | |



**BENSON
MINERAL
GROUP, INC.**

3200 Anaconda Tower
555 17th Street
Denver, Colorado 80202

PROPOSED LOCATION
DIAGRAM

| | | | | |
|-------------|-------|---------|--------------|--------------|
| GEOLOGY BY: | DATE: | POSTED: | APPROVED BY: | DRAFTING BY: |
|-------------|-------|---------|--------------|--------------|

Navajo 21-22-6 Well #1
800' FSL & 1660' FEL Section 21-T22N-R6W
Sandoval County, New Mexico

CERTIFICATION

I hereby certify that I, or persons under my direct supervision, have inspected the proposed drillsite and access route, that I am familiar with the conditions which presently exist; that the statements made in this plan are, to the best of my knowledge, true and correct; and, that the work associated with the operations proposed herein will be performed by BENSON MINERAL GROUP, INC. and its contractors and sub-contractors in conformity with this plan and the terms and conditions under which it is approved.

September 28, 1978

Date



Paul C. Ellison

Production Manager

Benson Mineral Group Inc.'s Representative:

Paul C. Ellison

Phone: Office: 303-893-0883; Home: 303-979-9021

Address: 3200 Anaconda Tower

555 17th Street

Denver, Colorado 80202