

UNITED STATES
DEPARTMENT OF THE INTERIOR
GEOLOGICAL SURVEY

APPLICATION FOR PERMIT TO DRILL, DEEPEN, OR PLUG BACK

1a. TYPE OF WORK

DRILL ☒DEEPEN ☐PLUG BACK ☐

b. TYPE OF WELL

OIL
WELL ☐GAS
WELL ☒

OTHER

SINGLE
ZONE ☐MULTIPLE
ZONE ☒

2. NAME OF OPERATOR

Dome Petroleum Corp.

3. ADDRESS OF OPERATOR

501 Airport Drive, Suite 107, Farmington, N.M., 87401

4. LOCATION OF WELL (Report location clearly and in accordance with any State requirements.*)

At surface

H 990' FEL, 1600' FNL, Sec. 20, T22N, R7W

At proposed prod. zone

14. DISTANCE IN MILES AND DIRECTION FROM NEAREST TOWN OR POST OFFICE*

15 Miles West of Counselors Trading Post

15. DISTANCE FROM PROPOSED*

LOCATION TO NEAREST
PROPERTY OR LEASE LINE, FT.
(Also to nearest drlg. unit line, if any)

16. NO. OF ACRES IN LEASE

160

18. DISTANCE FROM PROPOSED LOCATION*
TO NEAREST WELL, DRILLING COMPLETED,
OR APPLIED FOR, ON THIS LEASE, FT.

19. PROPOSED DEPTH

3600'

17. NO. OF ACRES ASSIGNED
TO THIS WELL

160

20. ROTARY OR CABLE TOOLS

Rotary

21. ELEVATIONS (Show whether DF, RT, GR, etc.)

6711 GR

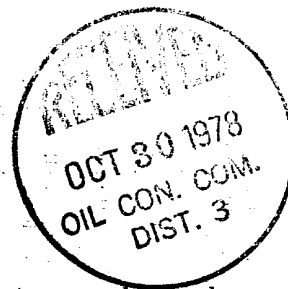
22. APPROX. DATE WORK WILL START*

November 1, 1978

23. PROPOSED CASING AND CEMENTING PROGRAM

SIZE OF HOLE	SIZE OF CASING	WEIGHT PER FOOT	SETTING DEPTH	QUANTITY OF CEMENT
9-7/8"	7"	20	90'	50 Sacks Circ.
6-1/4"	4-1/2"	10.5 or 9.5	3600'	By Caliper Log

Dome Petroleum Corp. proposes to drill a Cretaceous Test to 3600'. Completion will be determined from logs. A 6" 900 Series Blowout Preventer will be used. The BOP will be tested to 500 psi before drilling surface plug. The geologic name of the surface formation is Tertiary Nacimiento. Pertinent formation tops are estimated as Chacra 1360' Point Lookout 3450'. No abnormal temperatures or pressures are anticipated. Drilling should require approximately 6 days.

gas not identified

IN ABOVE SPACE DESCRIBE PROPOSED PROGRAM: If proposal is to deepen or plug back, give data on present productive zone and proposed new productive zone. If proposal is to drill or deepen directionally, give pertinent data on subsurface locations and measured and true vertical depths. Give blowout preventer program, if any.

24.

SIGNED

H. D. Hollingsworth

TITLE Drilling Foreman

DATE 10/6/78

(This space for Federal or State office use)

PERMIT NO.

APPROVAL DATE

APPROVED BY

TITLE

DATE

CONDITIONS OF APPROVAL, IF ANY:

OCT 27 1978

U. S. GEOLOGICAL SURVEY
FARMINGTON, N.M.

**NEW MEXICO OIL CONSERVATION COMMISSION
WELL LOCATION AND ACREAGE DEDICATION PLAT**

Form C-162
Supersedes C-128
Effective 1-1-65

All distances must be from the outer boundaries of the Section.

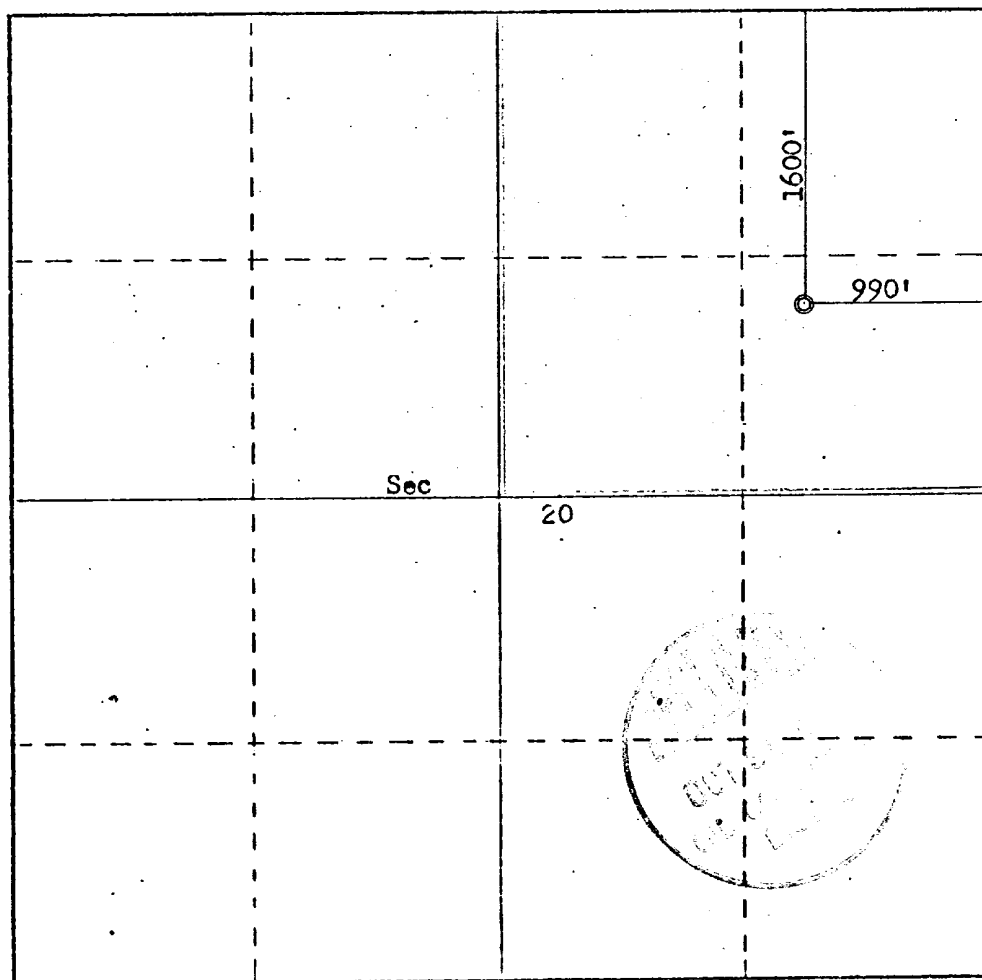
Operator DOMS PETROLEUM CORPORATIONS			Lease NAVAJO 20-22-7		Well No. 1
Unit Letter H	Section 20	Township 22N	Range 7W	County SANDOVAL	
Actual Footage Location of Well: 1600 feet from the North line and 990 feet from the East line.					
Ground Level Elev. 6808	Producing Formation Mesa Verde Point Lookout-Cretaceous		Pool Wildcat	Dedicated Acreage 160 Acres	

1. Outline the acreage dedicated to the subject well by colored pencil or hatchure marks on the plat below.
2. If more than one lease is dedicated to the well, outline each and identify the ownership thereof (both as to working interest and royalty).
3. If more than one lease of different ownership is dedicated to the well, have the interests of all owners been consolidated by communitization, unitization, force-pooling, etc?

☐ Yes ☐ No If answer is "yes," type of consolidation _____

If answer is "no," list the owners and tract descriptions which have actually been consolidated. (Use reverse side of this form if necessary.) _____

No allowable will be assigned to the well until all interests have been consolidated (by communitization, unitization, forced-pooling, or otherwise) or until a non-standard unit, eliminating such interests, has been approved by the Commission.



CERTIFICATION

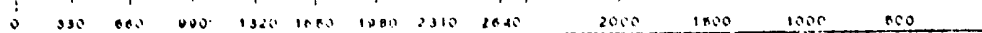
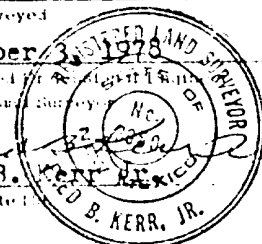
I hereby certify that the information contained herein is true and complete to the best of my knowledge and belief.

Name
H. D. Hollingsworth
Position **Drilling Foreman -**

Company
Dome Petroleum Corp.
Date
October 6, 1978

I hereby certify that the well location shown on this plat was plotted from field notes of actual surveys made by me or under my supervision, and that the same is true and correct to the best of my knowledge and belief.

Date Surveyed
October 3, 1978
Registered Professional Surveyor
and/or Land Surveyor
Fred B. Kerr, Jr.
3950





E. C. GENT
VICE PRESIDENT

DOME PETROLEUM CORP.

SUITE 1500, COLORADO STATE BANK BLDG.
1600 BROADWAY
DENVER, COLORADO 80202

TELEPHONE
(303) 861-1230

DEVELOPMENT PLAN FOR SURFACE USE
DOME PETROLEUM CORP.
NAVAJO 20-22-7 WELL NO. 1
1600'FNL, 990'FEL Sec. 20, T22N, R7W
Sandoval County, New Mexico

1. Existing Roads

The main road to location is that from 44 Store toward Torreon, (Star Lake Road), leaving this road approximately 12 miles South of 44 Store and using existing side roads to location.

2. Planned Access Roads

The access road, to be routed as shown on the attached map, will be 18' wide with adequate ditch and water bars.

3. Location of Existing Wells

Existing wells within one mile of location are shown on the attached topographic map.

4. Location of Proposed Facilities

Development of commercial gas production will require separation facilities on the location pad. Equipment and pits will be fenced as required for protection of livestock and wildlife. Above ground facilities will be painted brown or grey to blend in with the surrounding area as specified by the BLM. The disturbed areas no longer needed for operations after well completion will be restored to natural contour and reseeded.

5. Location & Type of Water Supply

To be hauled from Escrito, approximately 25 miles to the North.

6. Source of Construction Materials

Not applicable.

7. Method of Handling Waste Material

All garbage and trash that can be burned shall be burned. All trash that cannot be burned will be contained in a trash pit and covered with a minimum of 24 inches of dirt. All drilling waste such as cuttings, overflows of oil, water, and drilling fluids will be contained in the reserve pit and buried with adequate cover upon completion of operations. The reserve pit will be fenced until cleanup operations are commenced. Toilet facilities will be provided.

8. Ancillary Facilities

No camps or airstrips are proposed for this location.

9. Well Site Layout

See attached diagram.

10. Plans for Restoration of Surface

Cleanup of the location will commence immediately following the removal of the drilling equipment. The reserve pit will be fenced until restoration operations are commenced. The location will be returned to original contour if the well is not productive. Both the road and location will be reseeded in accordance with BLM specifications.

11. Other Information

This location is on sparsely vegetated sandy land. Vegetation consists principally of sagebrush and native grasses. There is no water source in the immediate area.

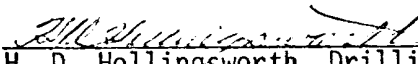
12. Leasee's or Operator's Representative

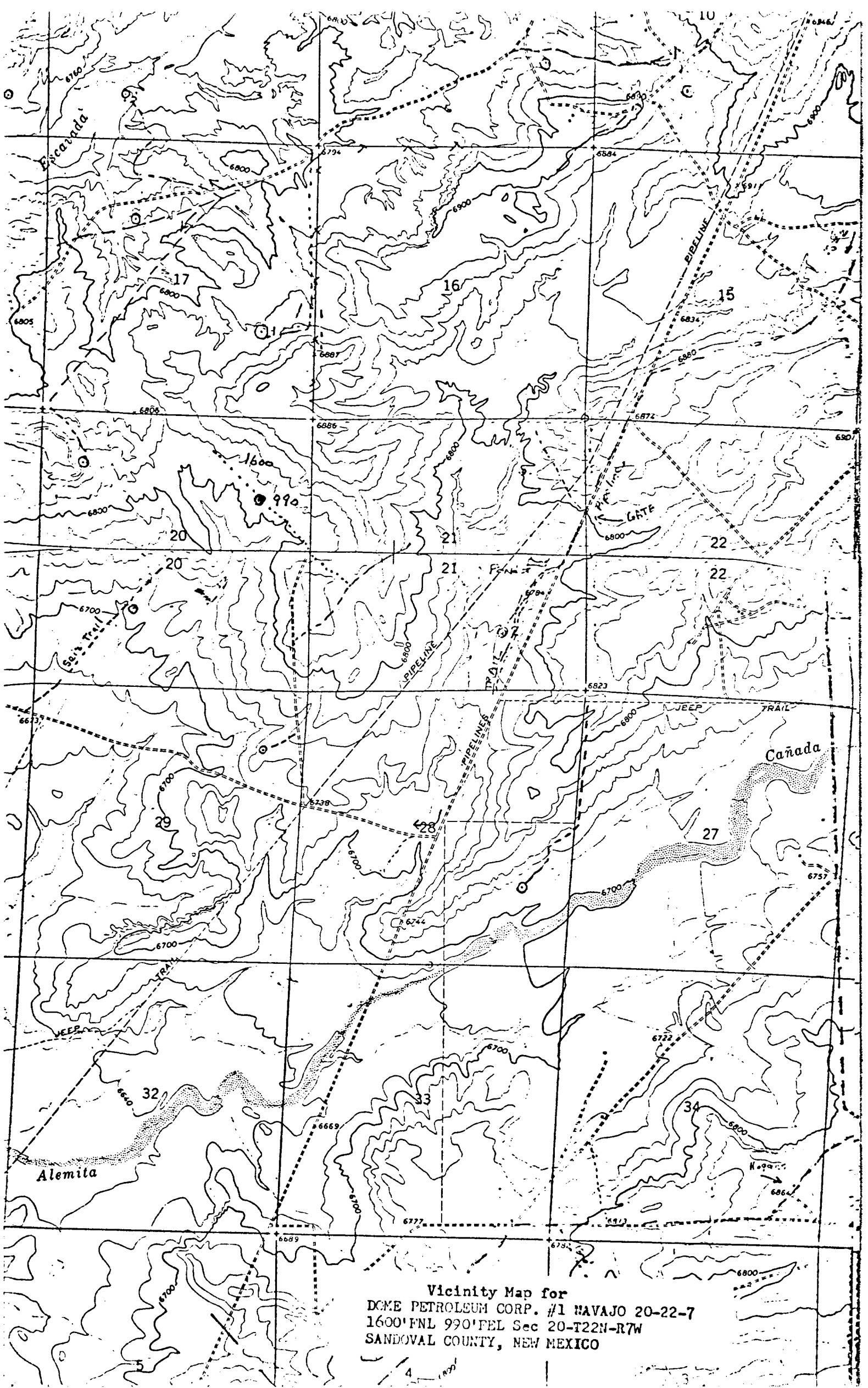
Dome Petroleum Corp.
H. D. Hollingsworth
Phone: Office: 505-325-2897; Home: 505-327-1548
Address: 501 Airport Drive
Suite 107
Farmington, New Mexico 87401

13. Certification

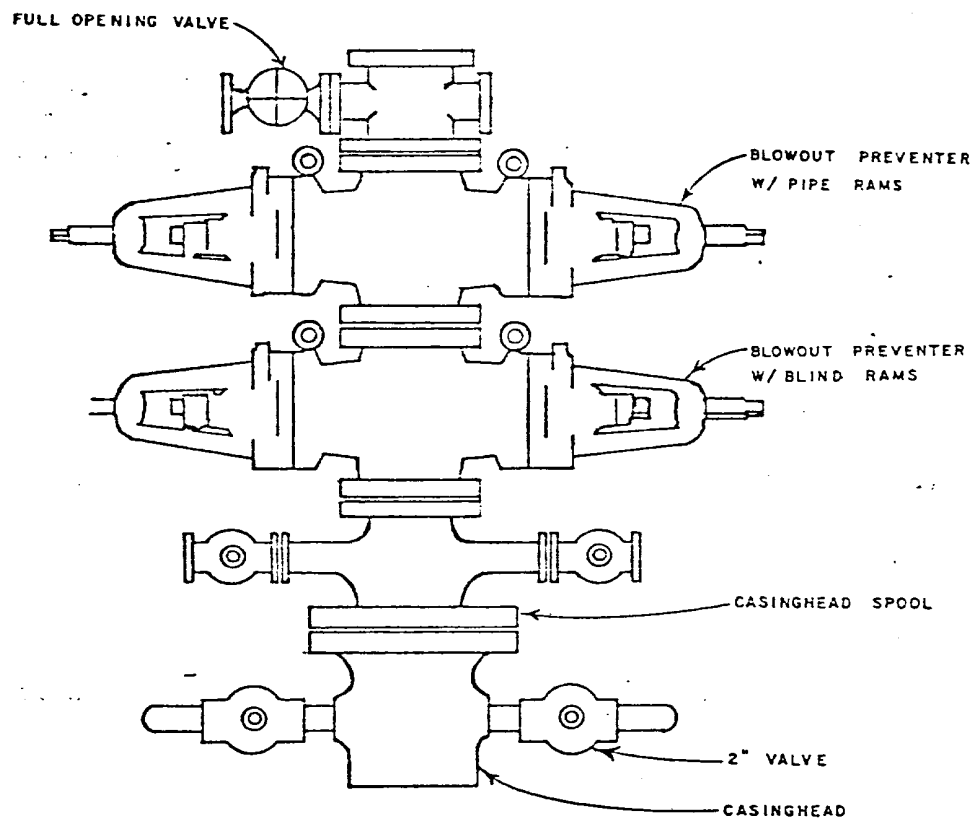
I hereby certify that I, or persons under my direct supervision, have inspected the proposed drillsite and access route; that I am familiar with the conditions which presently exist; that the statements made in the plan are, to the best of my knowledge, true and correct; and that the work associated with the operations proposed herein will be performed by Dome Petroleum Corp. and its contractors and subcontractors in conformity with this plan and the terms and conditions under which it is approved.

October 6, 1978


H. D. Hollingsworth, Drilling Foreman
DOME PETROLEUM CORP.



Vicinity Map for
DOME PETROLEUM CORP. #1 NAVAJO 20-22-7
1600'FNL 990'FEL Sec 20-T22N-R7W
SANDOVAL COUNTY, NEW MEXICO



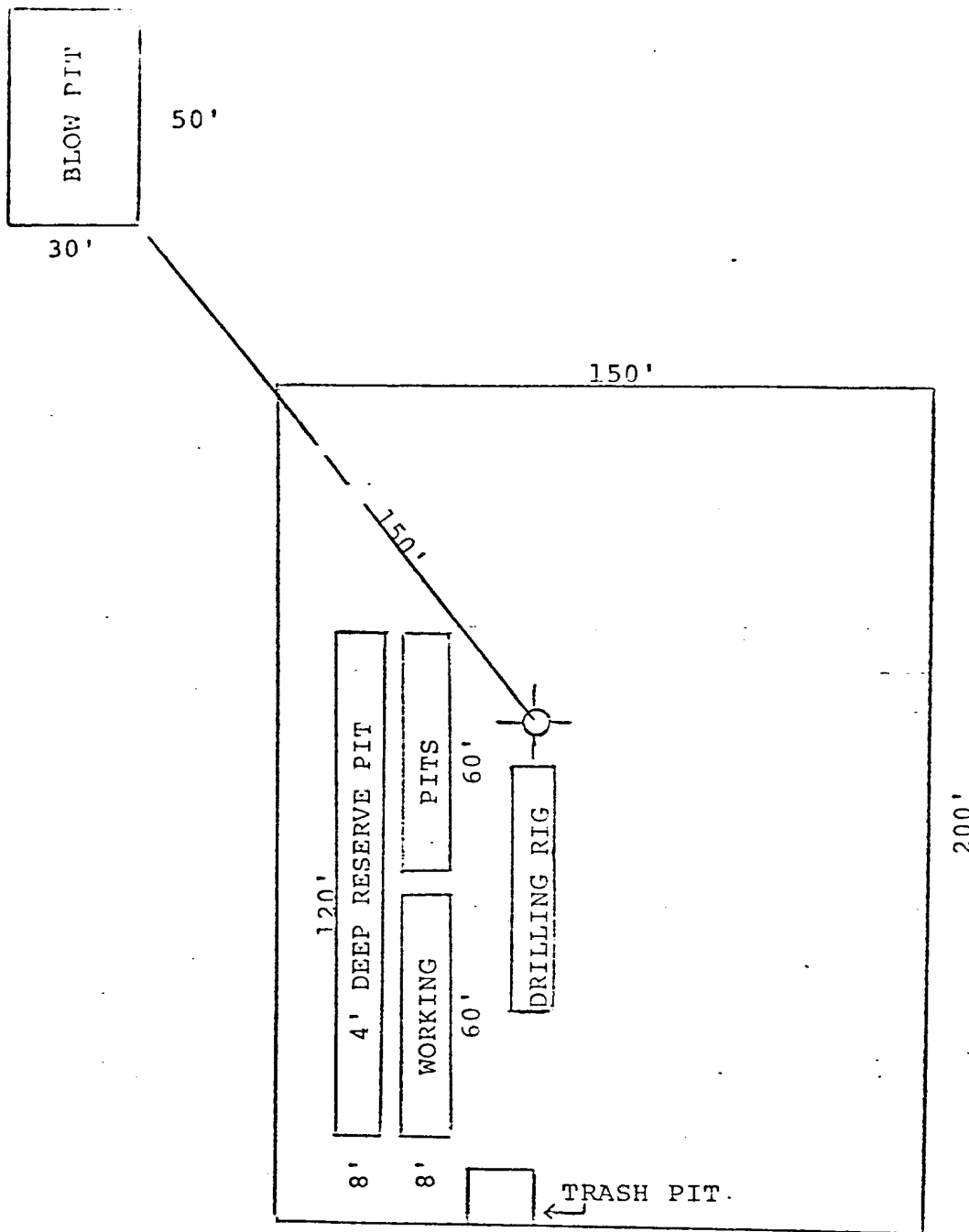
DOME PETROLEUM CORP.

SUITE 1500, COLORADO STATE BANK BLDG.

1600 BROADWAY

DENVER, COLORADO 80202

STANDARD BLOWOUT PREVENTER ASSEMBLY
6" 900 SERIES



DOME PETROLEUM CORP.

SUITE 1500, COLORADO STATE BANK BLDG.

1600 BROADWAY

DENVER, COLORADO 80202

PROPOSED LOCATION
DIAGRAM