

UNITED STATES  
DEPARTMENT OF THE INTERIOR  
GEOLOGICAL SURVEY

## APPLICATION FOR PERMIT TO DRILL, DEEPEN, OR PLUG BACK

## 1a. TYPE OF WORK

DRILL ☒DEEPEN ☐PLUG BACK ☐

## b. TYPE OF WELL

OIL  
WELL ☒GAS  
WELL ☐OTHER ☐SINGLE  
ZONE ☒MULTIPLE  
ZONE ☐

## 2. NAME OF OPERATOR

DAVE M. THOMAS, JR.

## 3. ADDRESS OF OPERATOR

P. O. Box 2026, Farmington, New Mexico 87401

## 4. LOCATION OF WELL (Report location clearly and in accordance with any State requirements.)\*

At surface

790' FNL, 790' FWL

At proposed prod. zone

## 14. DISTANCE IN MILES AND DIRECTION FROM NEAREST TOWN OR POST OFFICE\*

Same

## 15. DISTANCE FROM PROPOSED\*

LOCATION TO NEAREST

PROPERTY OR LEASE LINE, FT.

(Also to nearest drlg. unit line, if any)

4490'

18. DISTANCE FROM PROPOSED LOCATION\*  
TO NEAREST WELL, DRILLING, COMPLETED,  
OR APPLIED FOR, ON THIS LEASE, FT.

1580'

## 16. NO. OF ACRES IN LEASE

-

## 19. PROPOSED DEPTH

7498'

17. NO. OF ACRES ASSIGNED  
TO THIS WELL

160.08

## 20. ROTARY OR CABLE TOOLS

Rotary

## 21. ELEVATIONS (Show whether DF, RT, GR, etc.)

7326' GR, 7339' DF, 7340' KB

## 22. APPROX. DATE WORK WILL START\*

6-20-79

## 23. PROPOSED CASING AND CEMENTING PROGRAM

SIZE OF HOLE	SIZE OF CASING	WEIGHT PER FOOT	SETTING DEPTH	QUANTITY OF CEMENT
12-1/4"	8-5/8"	24.0	250'	250 Sacks
7-7/8"	4-1/2"	10.50&11.60	7498'	To be determined

It is proposed to drill this well with rotary tools, using oil base mud as circulation medium, through the Dakota Formation. Possible productive zones in the Dakota Formation will be completed. Production casing will be cemented in such a manner as to protect the Pictured Cliffs Formation.

## Estimated Formation Tops

Pictured Cliffs  
Cliff House  
Gallup

2894'  
4444'  
6036'

Green Hornbl. 7026'  
Graneros 7080'  
Dakota 2116'

The NW/4 Section 36 is dedicated to this well.

The natural gas produced from this well is committed.

IN ABOVE SPACE DESCRIBE PROPOSED PROGRAM: If proposal is to deepen or plug back, give data on present productive zone and proposed new productive zone. If proposal is to drill or deepen directionally, give pertinent data on subsurface locations and measured and true vertical depths. Give blowout preventer program, if any.

24. For: DAVE M. THOMAS, JR.

SIGNED

Ewell N. Walsh, P. E.

(This space for Federal or State office use)

TITLE

President, Walsh Eng.

DATE 5/10/79

&amp; Prod. Corp.

PERMIT NO.

APPROVAL DATE

APPROVE (S)

TITLE

DATE

CONDITIONS OF APPROVAL, IF ANY:

\*See Instructions On Reverse Side

## OIL CONSERVATION DIVISION

STATE OF NEW MEXICO  
ENERGY AND MINERALS DEPARTMENTP. O. BOX 2088  
SANTA FE, NEW MEXICO 87501Form C-102  
Revised 10-1-79

All distances must be from the outer boundaries of the Section.

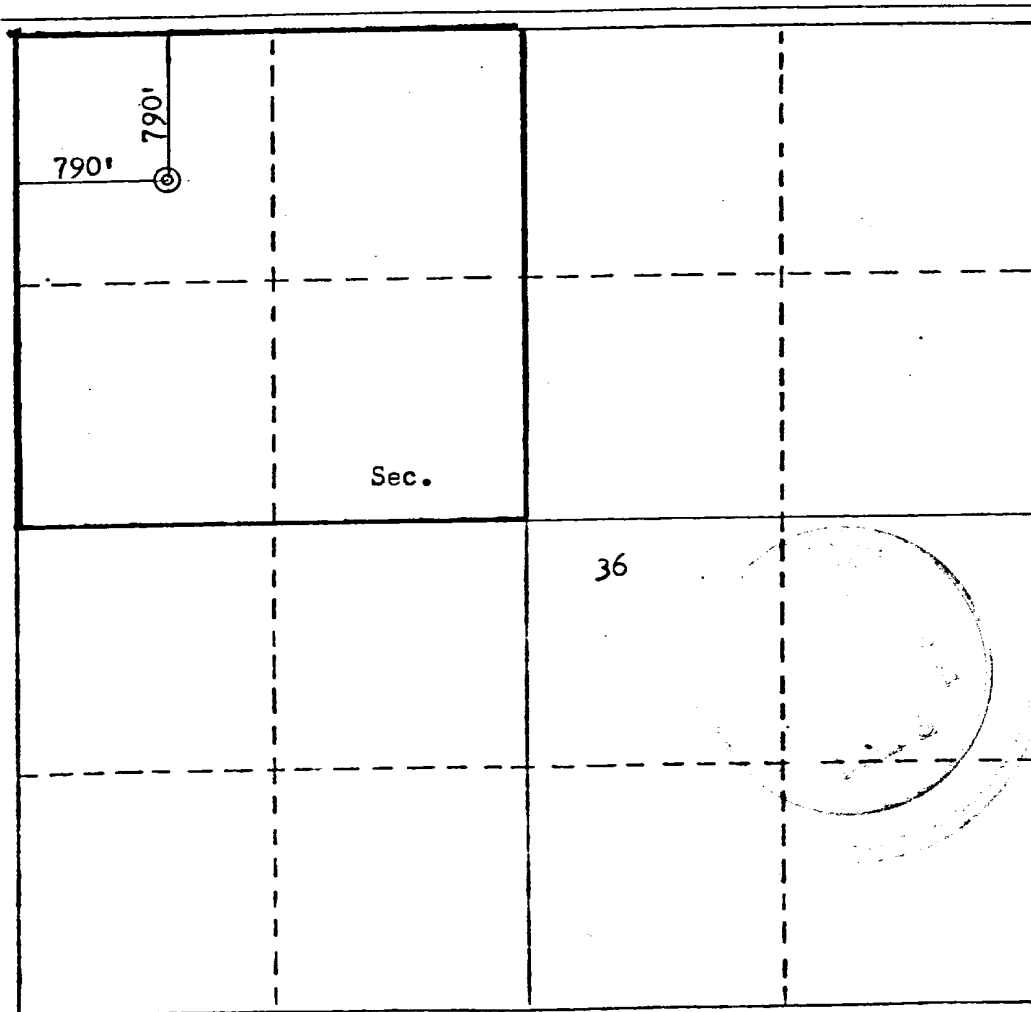
Operator <b>DAVE M. THOMAS JR.</b>			Lease <b>CHACON JICARILLA APACHE WD<sup>N</sup></b>		Well No. <b>105</b>
Unit Letter <b>D</b>	Section <b>36</b>	Township <b>23N</b>	Range <b>3W</b>	County <b>Sandoval</b>	
Actual Footage Location of Well: <b>790</b> feet from the <b>North</b> line and <b>790</b> feet from the <b>West</b> line					
Ground Level Elev. <b>7326</b>	Producing Formation <b>Dakota</b>		Pool <b>Chacon Dakota Associated</b>		Dedicated Acreage: <b>160 ± 08</b> Acres

1. Outline the acreage dedicated to the subject well by colored pencil or hatchure marks on the plat below.
2. If more than one lease is dedicated to the well, outline each and identify the ownership thereof (both as to working interest and royalty).
3. If more than one lease of different ownership is dedicated to the well, have the interests of all owners been consolidated by communitization, unitization, force-pooling, etc?

☐ Yes ☐ No If answer is "yes," type of consolidation \_\_\_\_\_

If answer is "no," list the owners and tract descriptions which have actually been consolidated. (Use reverse side of this form if necessary.) \_\_\_\_\_

No allowable will be assigned to the well until all interests have been consolidated (by communitization, unitization, forced-pooling, or otherwise) or until a non-standard unit, eliminating such interests, has been approved by the Division.



## CERTIFICATION

I hereby certify that the information contained herein is true and complete to the best of my knowledge and belief.

For: **DAVE M. THOMAS, JR.**

Name

**Ewell N. Walsh, P. E.**

Position

**President**

Company

**Walsh Engineering & Prod.**

Date

**May 10, 1979**

I hereby certify that the well location shown on this plat was plotted from field notes of actual surveys made by me or under my supervision, and that the same is true and correct to the best of my knowledge and belief.

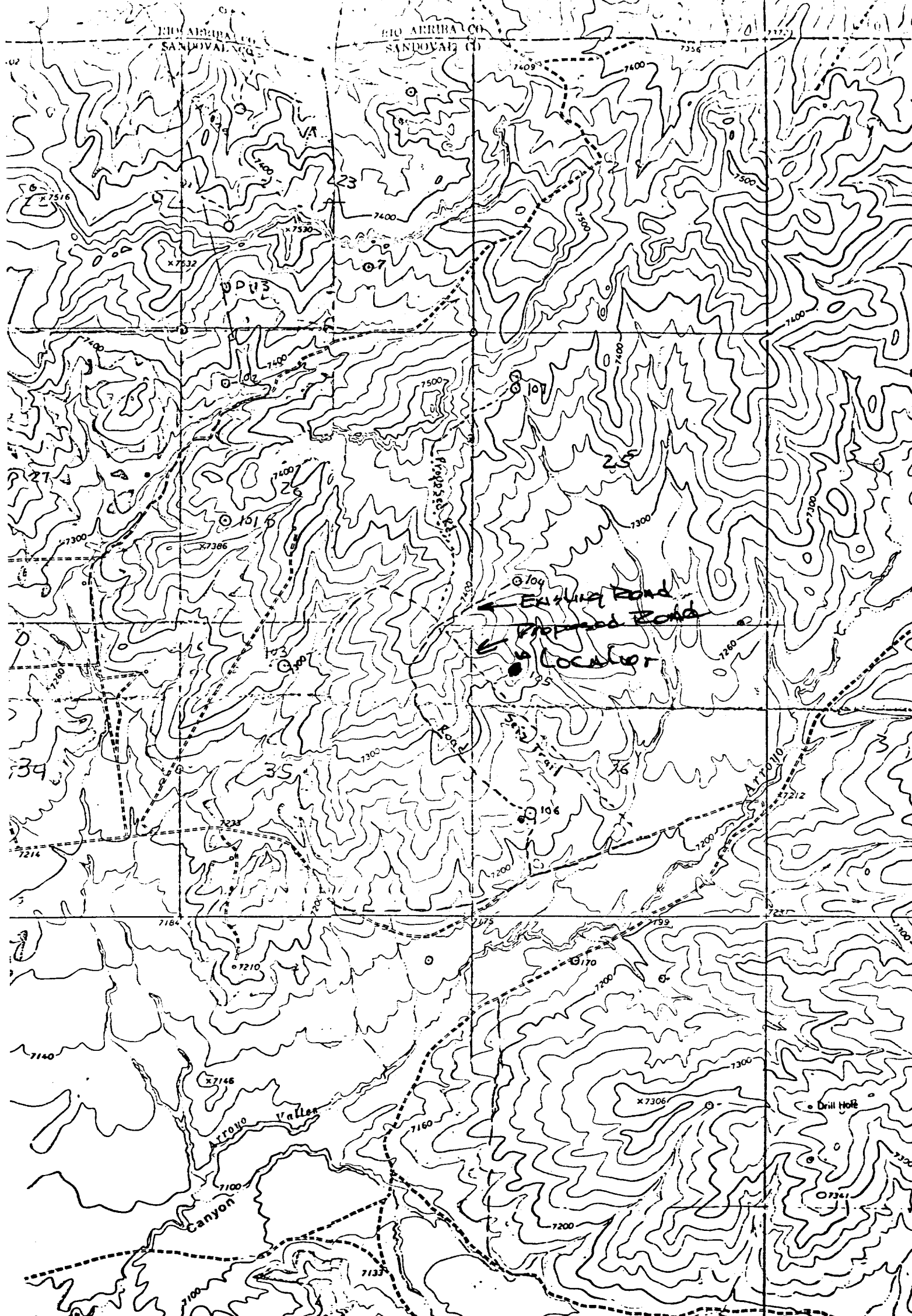
Date Surveyed

**May 8, 1979**Registered Professional Engineer  
and/or Land Surveyor**Fred B. Kerr, Jr.**

Certification No.

**3950**

0 330 660 990 1320 1650 1980 2310 2640 2970 3300 3630 3960 4290 4620 4950 5280 5610 5940 6270 6600



Locality Map for  
DAVE M. THOMAS JR. #105 CHACON JICARILLA ABACHE "D"  
790' FNL 790' FNL Sec 36-T23N-R3W  
SANDOVAL COUNTY, NM, MEXICO

Canyon