

UNITED STATES
DEPARTMENT OF THE INTERIOR
GEOLOGICAL SURVEY

APPLICATION FOR PERMIT TO DRILL, DEEPEN, OR PLUG BACK

1a. TYPE OF WORK DRILL ☒ DEEPEN ☐ PLUG BACK ☐

b. TYPE OF WELL
OIL WELL ☒ GAS WELL ☐ OTHER ☐ SINGLE ZONE ☒ MULTIPLE ZONE ☐

2. NAME OF OPERATOR
DAVE M. THOMAS, JR.

3. ADDRESS OF OPERATOR
P.O. Box 2026, Farmington, New Mexico 87401

4. LOCATION OF WELL (Report location clearly and in accordance with any State requirements.*)
At surface
1830' FSL, 1830' FEL, (NW/4 SE/4 - Unit J)
At proposed prod. zone
Same

14. DISTANCE IN MILES AND DIRECTION FROM NEAREST TOWN OR POST OFFICE*
Not applicable

15. DISTANCE FROM PROPOSED* LOCATION TO NEAREST PROPERTY OR LEASE LINE, FT.
(Also to nearest drlg. unit line, if any) 1830'

16. NO. OF ACRES IN LEASE

17. NO. OF ACRES ASSIGNED TO THIS WELL
160.05

18. DISTANCE FROM PROPOSED LOCATION* TO NEAREST WELL, DRILLING, COMPLETED, OR APPLIED FOR, ON THIS LEASE, FT.
2500'

19. PROPOSED DEPTH
7658'

20. ROTARY OR CABLE TOOLS
Rotary

21. ELEVATIONS (Show whether DF, RT, GR, etc.)
7394' GL, 7407' DF, 7408' KB

22. APPROX. DATE WORK WILL START*
1-15-80

PROPOSED CASING AND CEMENTING PROGRAM

SIZE OF HOLE	SIZE OF CASING	WEIGHT PER FOOT	SETTING DEPTH	QUANTITY OF CEMENT
12-1/4"	8-5/8"	24.0	250	250 Sacks
7-7/8"	4-1/2"	10.50 & 11.60	7658	To be determined

It is proposed to drill this well with rotary tools, using oil base mud as circulation medium, through the Dakota Formation. Possible productive zones in the Dakota Formation will be completed. Production casing will be cemented in such a manner as to protect the Pictured Cliffs Formation.

Estimated Formation Tops

Pictured Cliffs	3083'	Green horn	7180'
Cliff House	4602'	Graneros	7258'
Gallup	6163'	Dakota	7262'

The SE/4 Section 26 is dedicated to this well.
The natural gas produced from this well is committed.

IN ABOVE SPACE DESCRIBE PROPOSED PROGRAM: If proposal is to deepen or plug back, give data on present productive zone and proposed new productive zone. If proposal is to drill or deepen directionally, give pertinent data on subsurface locations and measured and true vertical depths. Give blowout preventer program, if any.

24. For: DAVE M. THOMAS, JR.
SIGNED: *David M. Walsh*
Ewell N. Walsh, P.E.
(This space for Federal or State office use)

TITLE: President, Walsh Engin. & Prod. Corp. DATE: August 16, 1979

PERMIT NO. _____

APPROVAL DATE _____

APPROVED BY _____
CONDITIONS OF APPROVAL, IF ANY:

TITLE _____

JUL 20 1979
OIL CON. COM.
DATE

AUG 17 1979

*See Instructions On Reverse Side

U. S. GEOLOGICAL SURVEY
DURANGO, COLO.

OIL CONSERVATION DIVISION

P. O. BOX 2088

Form C-107
Revised 10-1-78STATE OF NEW MEXICO
ENERGY AND MINERALS DEPARTMENT

SANTA FE, NEW MEXICO 87501

All distances must be from the outer boundaries of the Section.

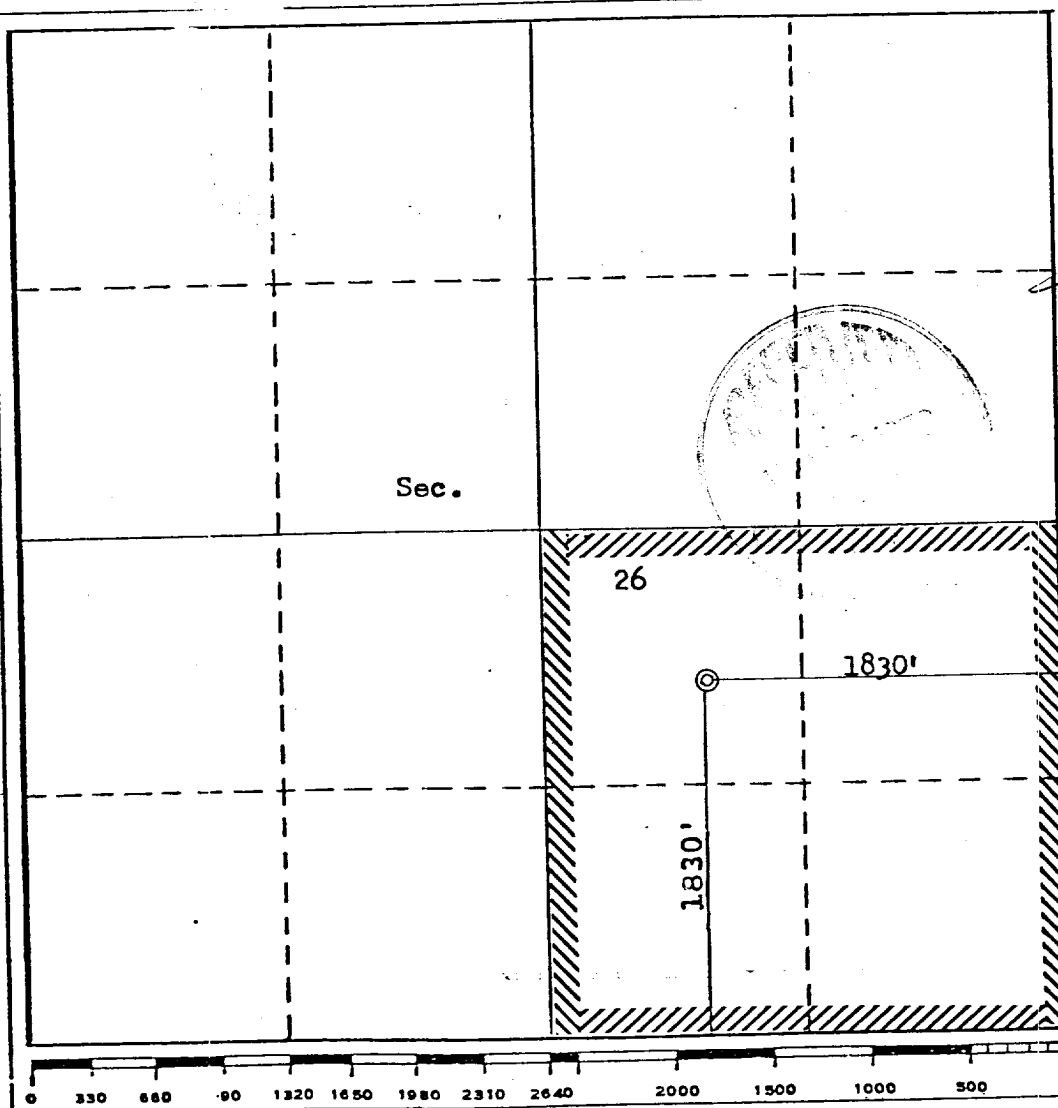
Operator DAVE M. THOMAS JR.			Lease CHACON JICARILLA APACHE "D"		Well No. 109
Unit Letter J	Section 26	Township 23N	Range 3W	County Sandoval	
Actual Footage Location of Well: 1830 feet from the South line and 1830 feet from the East line					
Ground Level Elev. 7394	Producing Formation Dakota		Pool Chacon Dakota Associated		Dedicated Acreage: 160.05 Acres

1. Outline the acreage dedicated to the subject well by colored pencil or hatchure marks on the plat below.
2. If more than one lease is dedicated to the well, outline each and identify the ownership thereof (both as to working interest and royalty).
3. If more than one lease of different ownership is dedicated to the well, have the interests of all owners been consolidated by communitization, unitization, force-pooling, etc?

☐ Yes ☐ No If answer is "yes," type of consolidation _____

If answer is "no," list the owners and tract descriptions which have actually been consolidated. (Use reverse side of this form if necessary.) _____

No allowable will be assigned to the well until all interests have been consolidated (by communitization, unitization, forced-pooling, or otherwise) or until a non-standard unit, eliminating such interests, has been approved by the Commission.



CERTIFICATION

I hereby certify that the information contained herein is true and complete to the best of my knowledge and belief.

For: Dave M. Thomas, Jr.

Name: *Ewell N. Walsh*
Position: Ewell N. Walsh, P.E.
President

Company: Walsh, Engineering & Production Corp.

Date: August 16, 1979

I hereby certify that the well location shown on this plat was plotted from field notes of actual surveys made by me or under my supervision, and that the same is true and correct to the best of my knowledge and belief.

Date Surveyed: August 10, 1979
Registered Professional Engineer and/or Land Surveyor
Fred B. Kerr, Jr.
Certificate No. 3950

