

UNITED STATES  
DEPARTMENT OF THE INTERIOR  
GEOLOGICAL SURVEY

## APPLICATION FOR PERMIT TO DRILL, DEEPEN, OR PLUG BACK

## 1A. TYPE OF WORK

DRILL ☒DEEPEN ☐PLUG BACK ☐

## B. TYPE OF WELL

OIL  
WELL ☒GAS  
WELL ☐

OTHER

SINGLE  
ZONE ☒MULTIPLE  
ZONE ☐

## 2. NAME OF OPERATOR

DOME PETROLEUM CORPORATION

## 3. ADDRESS OF OPERATOR

501 Airport Drive, Suite 107, Farmington, New Mexico 87401

## 4. LOCATION OF WELL (Report location clearly and in accordance with any State requirements.)

At surface

660' FNL, 500' FWL

At proposed prod. zone

## 14. DISTANCE IN MILES AND DIRECTION FROM NEAREST TOWN OR POST OFFICE\*

17 miles southwest of Counselors Trading Post, New Mexico

## 10. DISTANCE FROM PROPOSED\*

LOCATION TO NEAREST  
PROPERTY OR LEASE LINE, FT.  
(Also to nearest drlg. unit line, if any)

## 16. NO. OF ACRES IN LEASE

160

17. NO. OF ACRES ASSIGNED  
TO THIS WELL

40

18. DISTANCE FROM PROPOSED LOCATION\*  
TO NEAREST WELL, DRILLING, COMPLETED,  
OR APPLIED FOR, ON THIS LEASE, FT.

## 19. PROPOSED DEPTH

6100'

## 20. ROTARY OR CABLE TOOLS

ROTARY

## 21. ELEVATIONS (Show whether DF, RT, GR, etc.)

6802 GR

## 22. APPROX. DATE WORK WILL START\*

December 1, 1979

## 23.

## PROPOSED CASING AND CEMENTING PROGRAM

SIZE OF HOLE	SIZE OF CASING	WEIGHT PER FOOT	SETTING DEPTH	QUANTITY OF CEMENT
13 1/4"	9 5/8"	32.3#	200'	200 sacks
8 3/4"	7"	20# & 23#	6100'	BY CALIPER LOG (2-stage)

Move in rotary tools. Drill 13 1/4" hole to 200'. Set 200' of new 9 5/8" casing. Cement as above. Wait on cement 12 hrs. Install 10" 900 Series Blowout Preventer. Test to 500 psi before drilling out from under surface pipe. Drill 8 3/4" hole to T.D. The geologic name of the surface formation is Mesa Verde. Pertinent formation tops are estimated as Point Lookout 2795'; Gallup 3705'; Dakota 4970'; Entrada 5995'. Mud system will be low solids nondispersed. Mud weight 8.5-9.2#/gal., W.L. 8-10cc, viscosity 30-50 sec/quart. No abnormal temperatures or pressures are anticipated. Logging program will be IES, FDC/CNL/GR with caliper log. Drill stem test will be taken where necessary for evaluation. If commercial, 7" casing will be run and cemented as above. If noncommercial, P & A will follow USGS specifications.

IN ABOVE SPACE DESCRIBE PROPOSED PROGRAM: If proposal is to deepen or plug back, give data on present productive zone and proposed new productive zone. If proposal is to drill or deepen directionally, give pertinent data on subsurface locations and measured and true vertical depths. Give blowout preventer program, if any.

## 24.

SIGNED

  
H.D. HOLLINGSWORTH

TITLE DRILLING &amp; PRODUCTION FOREMAN DATE October 31, 1979

(This space for Federal or State office use)

PERMIT NO.

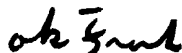
APPROVAL DATE

APPROVED BY

TITLE

DATE

CONDITIONS OF APPROVAL, IF ANY:

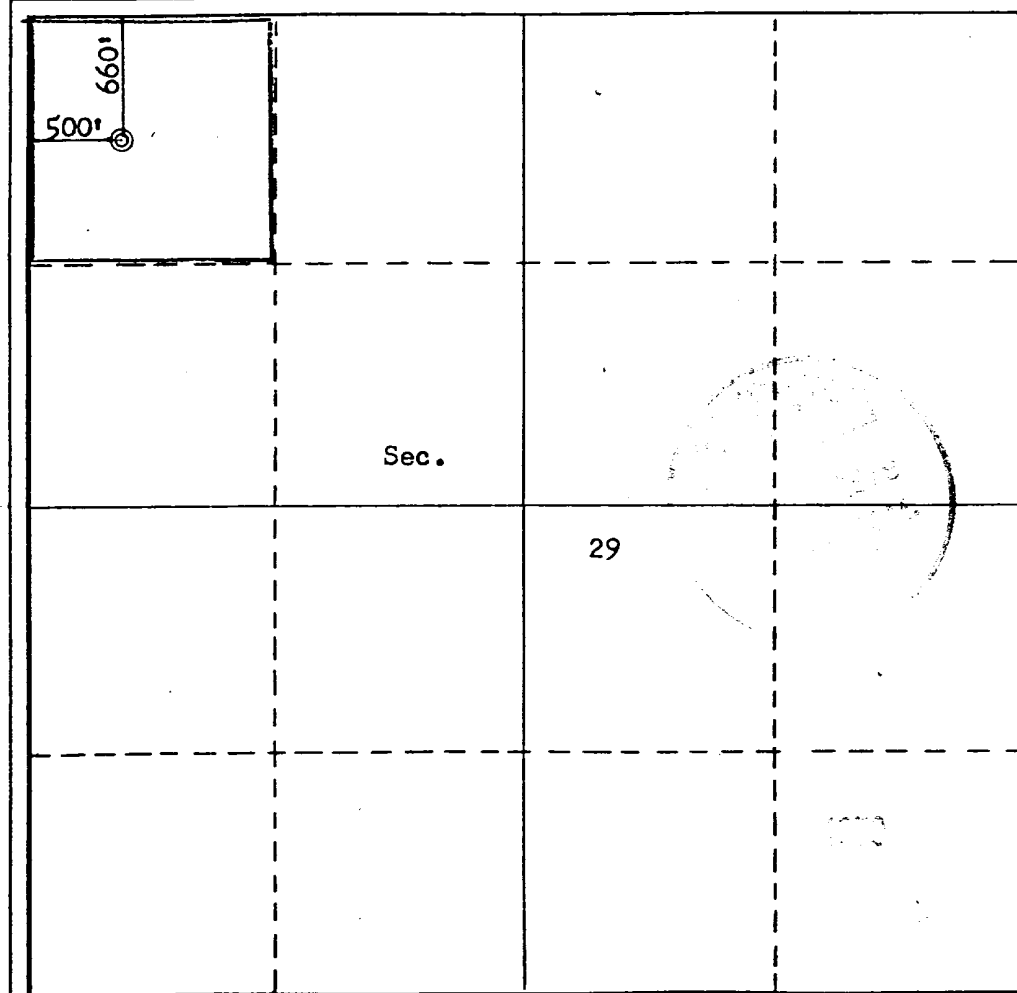


## OIL CONSERVATION DIVISION

STATE OF NEW MEXICO  
ENERGY AND MINERALS DEPARTMENTP. O. BOX 2088  
SANTA FE, NEW MEXICO 87501Form C-102  
Revised 10-1-78

All distances must be from the outer boundaries of the Section

Operator <b>DOME PETROLEUM CORPORATION</b>		Lease <b>DOME-NAVAJO 29-21-7</b>		Well No. <b>1</b>
Unit Letter <b>D</b>	Section <b>29</b>	Township <b>21N</b>	Range <b>7W</b>	County <b>Sandoval</b>
Actual Footage Location of Well: <b>660</b> feet from the <b>North</b> line and <b>500</b> feet from the <b>West</b> line				
Ground Level Elev. <b>6802</b>	Producing Formation <b>ENTRADA</b>		Pool <b>WILDCAT</b>	Dedicated Acreage: <b>40</b> Acres
<p>1. Outline the acreage dedicated to the subject well by colored pencil or hachure marks on the plat below.</p> <p>2. If more than one lease is dedicated to the well, outline each and identify the ownership thereof (both as to working interest and royalty).</p> <p>3. If more than one lease of different ownership is dedicated to the well, have the interests of all owners been consolidated by communitization, unitization, force-pooling, etc?</p> <p><input type="checkbox"/> Yes <input type="checkbox"/> No If answer is "yes," type of consolidation _____</p> <p>If answer is "no," list the owners and tract descriptions which have actually been consolidated. (Use reverse side of this form if necessary.) _____</p> <p>No allowable will be assigned to the well until all interests have been consolidated (by communitization, unitization, forced-pooling, or otherwise) or until a non-standard unit, eliminating such interests, has been approved by the Commission.</p>				



## CERTIFICATION

I hereby certify that the information contained herein is true and complete to the best of my knowledge and belief.

*H.D. Hollingsworth*  
Name

H.D. HOLLINGSWORTH

Position

DRILLING & PRODUCTION FOREMAN

Company

DOME PETROLEUM CORPORATION

Date

October 31, 1979

I hereby certify that the well location shown on this plat was plotted from field notes of actual surveys made by me or under my supervision, and that the same is true and correct to the best of my knowledge and belief.

Date Surveyed

October 30, 1979

Registered Professional Engineer  
and/or Land Surveyor

*Fred B. Kerr Jr.*  
Certificate No. 3950

3950



E. C. GENT  
VICE PRESIDENT

# DOME PETROLEUM CORP.

SUITE 1500, COLORADO STATE BANK BLDG.

1600 BROADWAY

DENVER, COLORADO 80202

TELEPHONE  
(303) 861-1230

## DEVELOPMENT PLAN FOR SURFACE USE

DOME PETROLEUM CORPORATION  
Dome Navajo 29-21-7 Well No. 1  
660' FNL, 500' FWL  
Sec. 29, T21N, R7W  
Sandoval County, New Mexico

### 1. EXISTING ROADS

The main road to the location is that from Counselors Trading Post to Pueblo Pintado, as shown on the attached topographic map.

### 2. PLANNED ACCESS ROADS

The access road, to be routed as shown on the attached map, will be 18' wide with adequate ditch and water bars.

### 3. LOCATION OF EXISTING WELLS - NONE

### 4. LOCATION OF PROPOSED FACILITIES

Flow lines and tank battery will be on the location pad. Equipment and pits will be fenced as required for protection of livestock and wildlife.

### 5. LOCATION AND TYPE OF WATER SUPPLY - To be hauled from Chapman Ranch water hole.

### 6. SOURCE OF CONSTRUCTION MATERIALS - NOT APPLICABLE.

### 7. METHOD OF HANDLING WASTE MATERIAL

All garbage and trash that can be burned shall be burned. All trash that cannot be burned will be contained in a trash pit and covered with a minimum of 24 inches of dirt. All drilling waste such as cuttings, overflow of oil, water and drilling fluids will be contained in the reserve pit and buried with adequate cover upon completion of operations. The reserve pit will be fenced until cleanup operations are commenced. Toilet facilities will be provided.

### 8. ANCILLARY FACILITIES - No camps or airstrips are proposed for this location.

### 9. WELL SITE LAYOUT - SEE ATTACHED DIAGRAM.

### 10. PLANS FOR RESTORATION OF SURFACE

Cleanup of the location will commence immediately following the removal of the drilling equipment. The reserve pit will be fenced until restoration operations are commenced. The location will be returned to original contour if the well is not productive. Both the road and location will be reseeded in accordance with BLM specifications.

11. OTHER INFORMATION

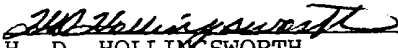
This location is on sparsely vegetated sandy land. Vegetation consists principally of sagebrush and native grasses. There is no water source in the immediate area.

12. LESSEE'S OR OPERATOR'S REPRESENTATIVE

H. D. Hollingsworth  
Dome Petroleum Corporation  
501 Airport Drive, Suite 107  
Farmington, New Mexico 87401  
Phone: 505-325-2897 Office  
505-327-1548 Home

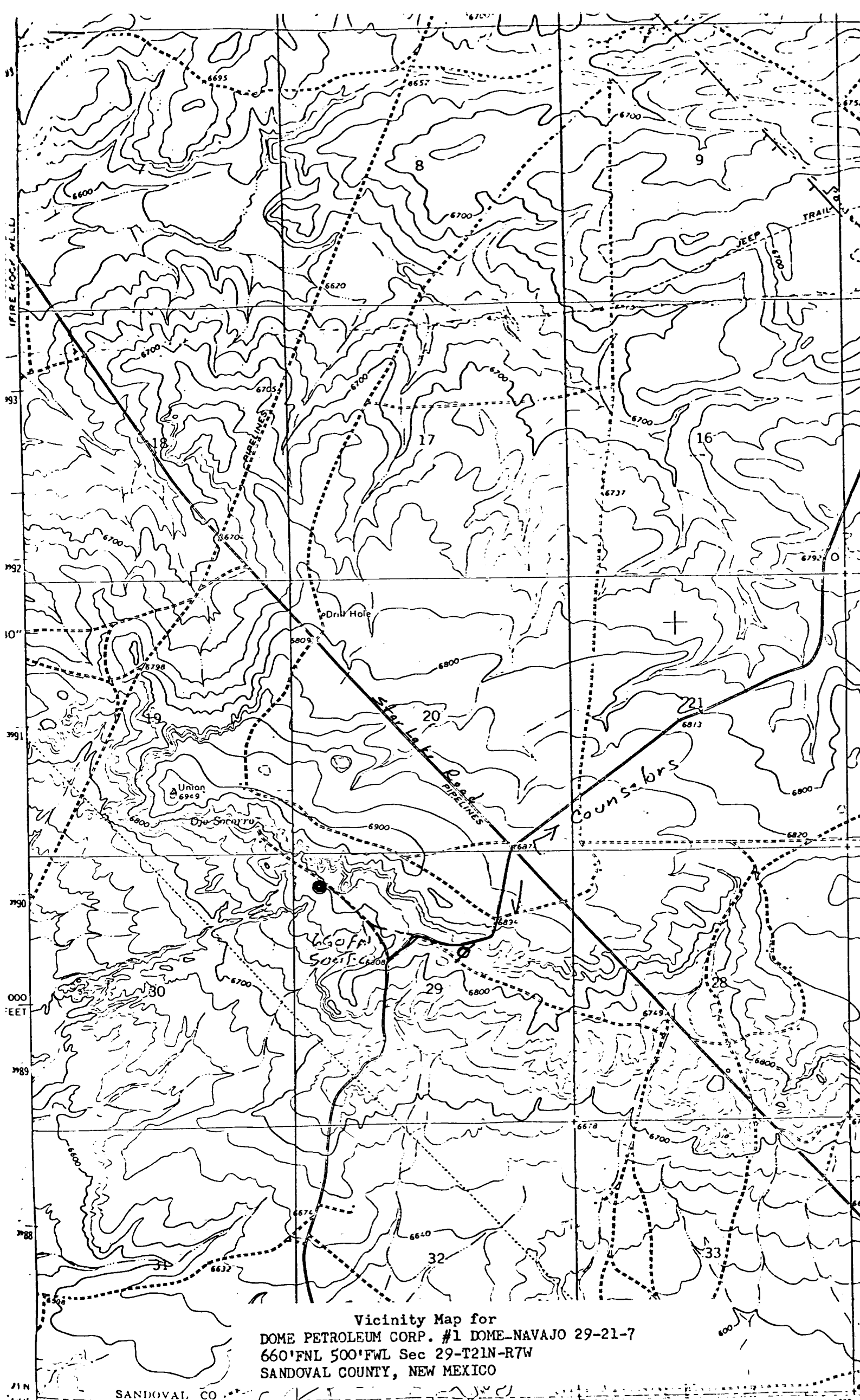
13. CERTIFICATION

I hereby certify that I, or persons under my direct supervision, have inspected the proposed drillsite and access route; that I am familiar with the conditions which presently exist; that the statements made in this plan are, to the best of my knowledge, true and correct; and that the work associated with the operations proposed herein will be performed by Dome Petroleum Corporation and its contractors and subcontractors in conformity with this plan and the terms and conditions under which it is approved.

  
H. D. HOLLINGSWORTH  
Dome Petroleum Corporation  
Drilling and Production Foreman

October 31, 1979

HDH/clp



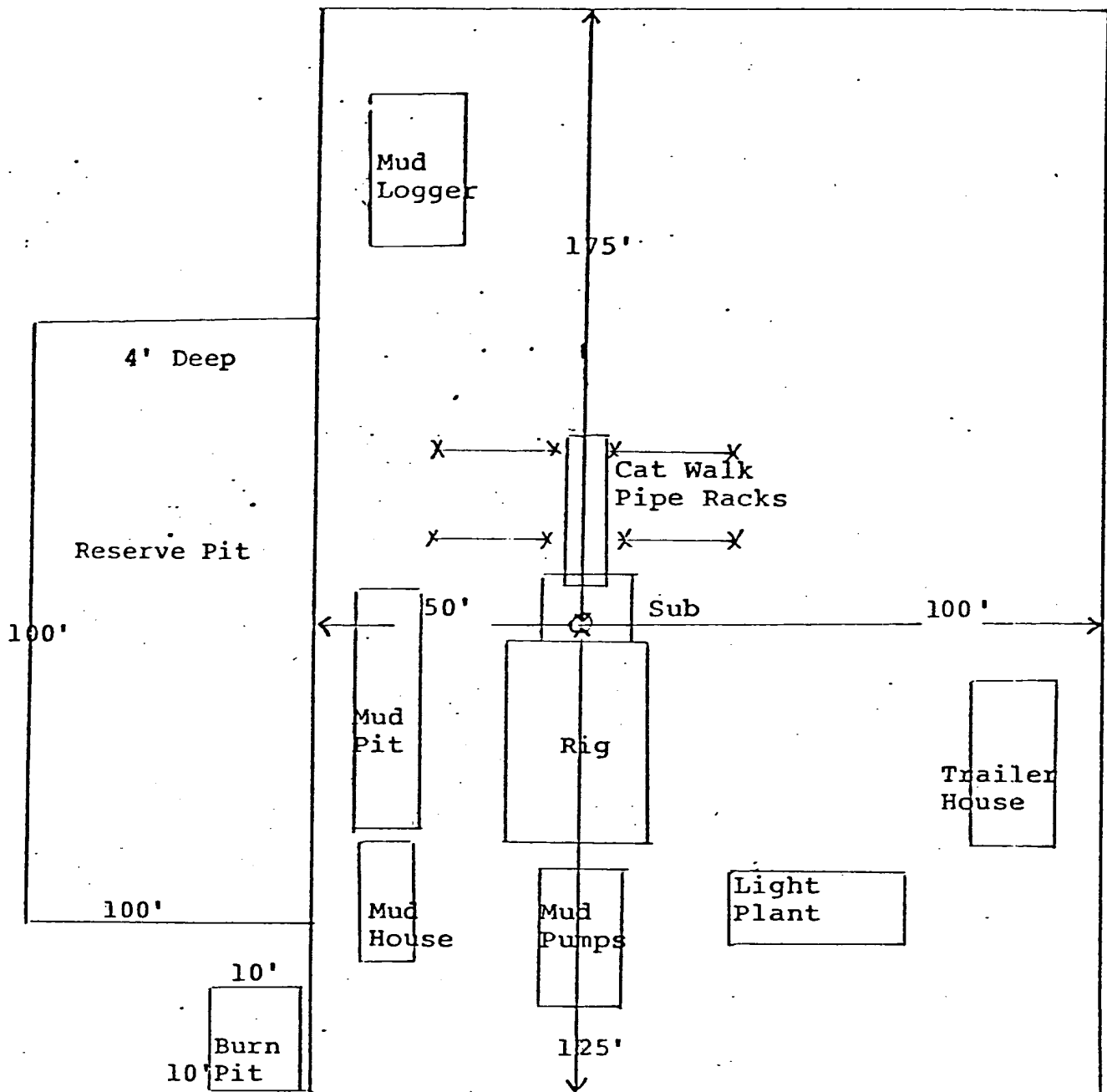


DIAGRAM OF WELL LOCATION  
AND DRILLING RIG LAYOUT