

*Smiley ok 3rd /*

**RIJAN OIL COMPANY, INC.**

20 FIRST PLAZA, SUITE 402  
ALBUQUERQUE, NEW MEXICO 87102  
(505) 243-0665

February 1, 1980

Mr. Carl A. Barrick  
Acting District Engineer  
U. S. G. S.  
Box 1809  
Durango, Colorado 81301

Dear Mr. Barrick:

This is an Addendum to the "Application for Permit to Drill, Deepen, or Plug Back" on the Rijan Oil Company, Inc. well # Federal 2-26, Section 26, Township 19 North, Range 3 West, Sandoval County, New Mexico.

A schematic diagram of the blowout preventor to be used on this well with pressure rating and size is attached.

The testing procedure and testing frequency for this equipment is attached.

No abnormal conditions, pressure or temperatures are anticipated. Hazards of a gaseous nature can be handled by the blowout prevention equipment installed on this well.

Sincerely yours,

*Val R. Reese*

Val R. Reese  
Vice President

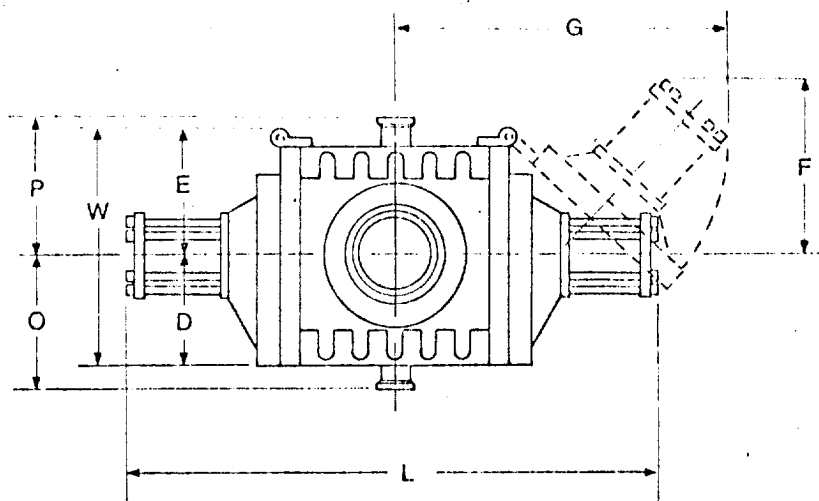
Attachments



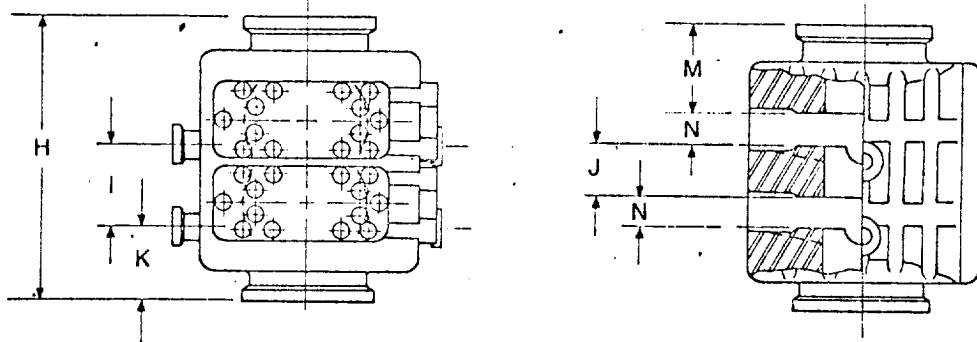
### BLOWOUT PREVENTOR TESTING PROCEDURE

1. Surface casing will be set and cemented. Blowout preventor will be installed and tested to 1000 psig for thirty minutes.
2. During all operations, blowout preventor will be checked on a daily basis. Rams will be activated and hydraulic system checked.
3. Blind rams will be activated and checked on all trips.

DIMENSION DRAWINGS



DOUBLE



Shaffer Type SL BOP Specifications:

10" Test pressure 3000 psig.

10" Shaffer Type SL BOP with Hydraulic closing system.

Specifications:

|                       |            |
|-----------------------|------------|
| Working pressure      | 3000 psig. |
| Piston size           | 10 inches  |
| Dimensions in inches: |            |
| Length(L)             | 130        |
| (F)                   | 41         |
| (G)                   | 68         |
| Width(W)              | 40         |
| Height(H)             | 36         |
| (K)                   | 10         |
| (M)                   | 6 3/8      |
| (N)                   | 4 1/2      |
| (O)                   | 21 3/4     |
| (P)                   | 21 3/4     |