

See by change of plan ok Fred

JACK A. COLE
PETROLEUM GEOLOGIST
P.O. BOX 191
FARMINGTON, NEW MEXICO 87401
(505) 325 - 1415

ADDENDUM TO INTENT TO DRILL APPLICATION

Jack A. Cole
Alamos Canyon No. 2
1120/N and 1110/E Sec. 8-T21N-R6W
Sandoval County, New Mexico

1. Surface casing to be changed from 70 feet to 120 feet 8 5/8", 24.0 lb/ft casing.
2. A schematic diagram of the blowout prevention equipment is enclosed. The BOP's will be hydraulically tested to the full working pressure after nipping up and after any use under pressure. Pipe rams will be operationally checked each 24 hour period as will blind rams each time pipe is pulled out of hole. Such checks of BOP equipment will be noted on daily drilling reports.

Accessories to the BOP will include floor safety valve, and choke manifold with pressure rating equivalent to the BOP stack.
3. All casing and tubing strings will be new. The 8 5/8" surface casing will be 24.0 lb/ft, K-55 8 round ST&C. The 4 1/2" casing will be K-55 8 round ST&C.
4. The type of cement to be used is as follows:
 8 5/8" surface casing: Circulate 100 sacks of Class B, 2% CaCl₂.

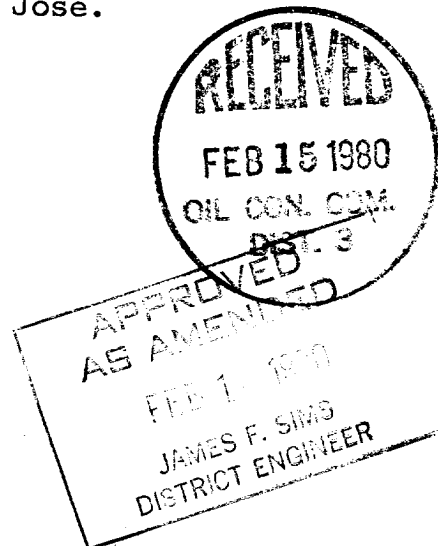
 4 1/2" production casing: 150 sacks 50-50 pozmix, 2% gel to raise to surface.
5. The surface formation is Tertiary Wasatch-San Jose.
6. The estimated tops of geologic markers:

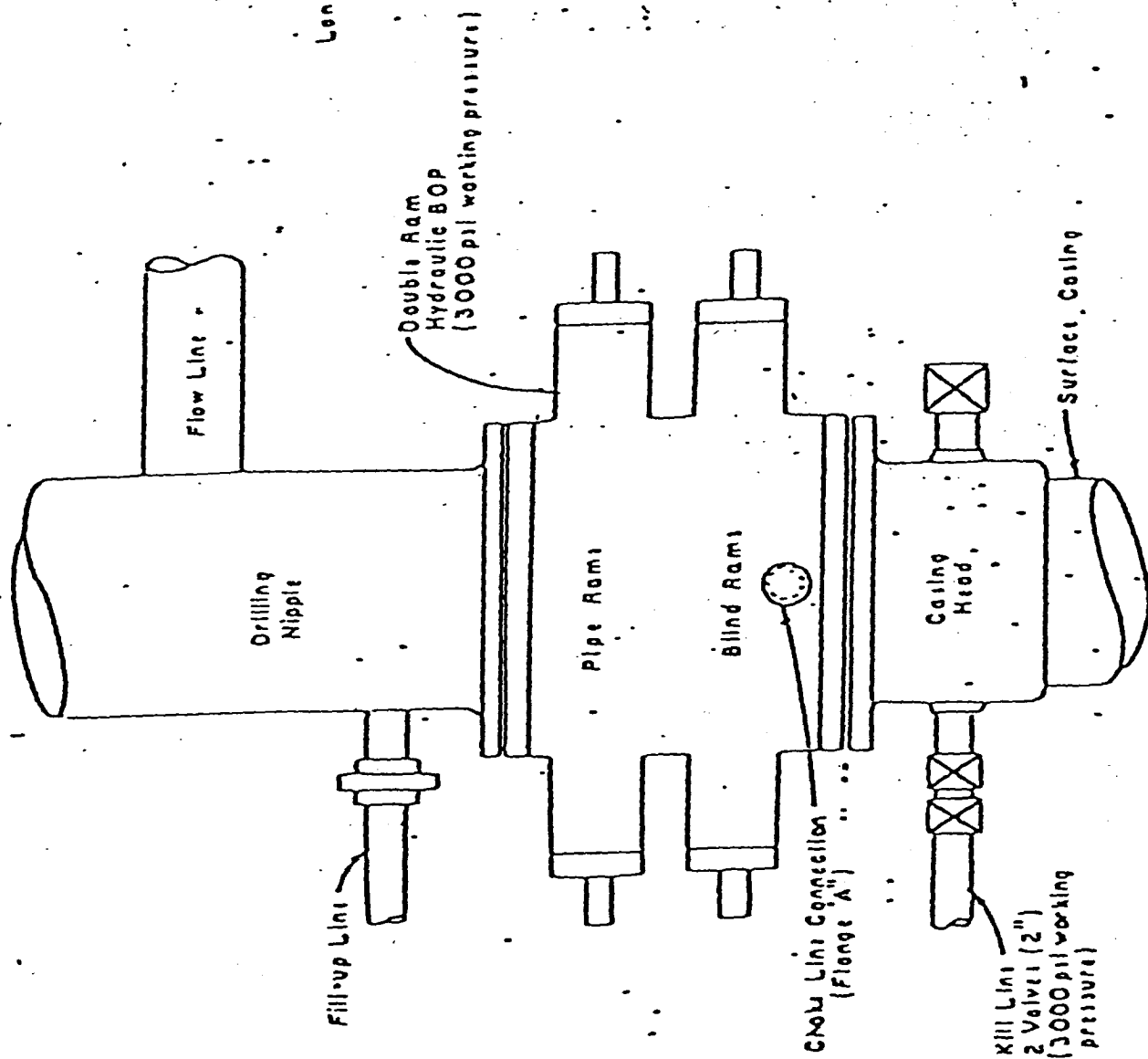
Ojo Alamo Sand	400
Fruitland Shale	600
Pictured Cliffs Sand	920
Lewis Shale	1100
Chacra Sand	1350
Mesaverde Sand	1700
7. Anticipated water zones:

Ojo Alamo Sand
Pictured Cliffs Sand
Mesaverde Sand
8. Anticipated gas bearing zone:

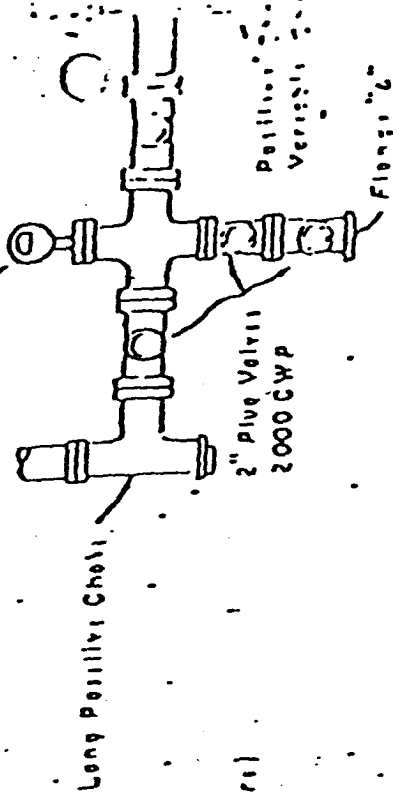
Chacra Sand

9. To protect the Ojo Alamo aquifer it is proposed to cement the production string from TD to the surface.





Flanged Cross with Pressure Gauge in Outside Opening



PLAN VIEW - CHOKE MANIFOLD