

All distances must be from the outer boundaries of the Section

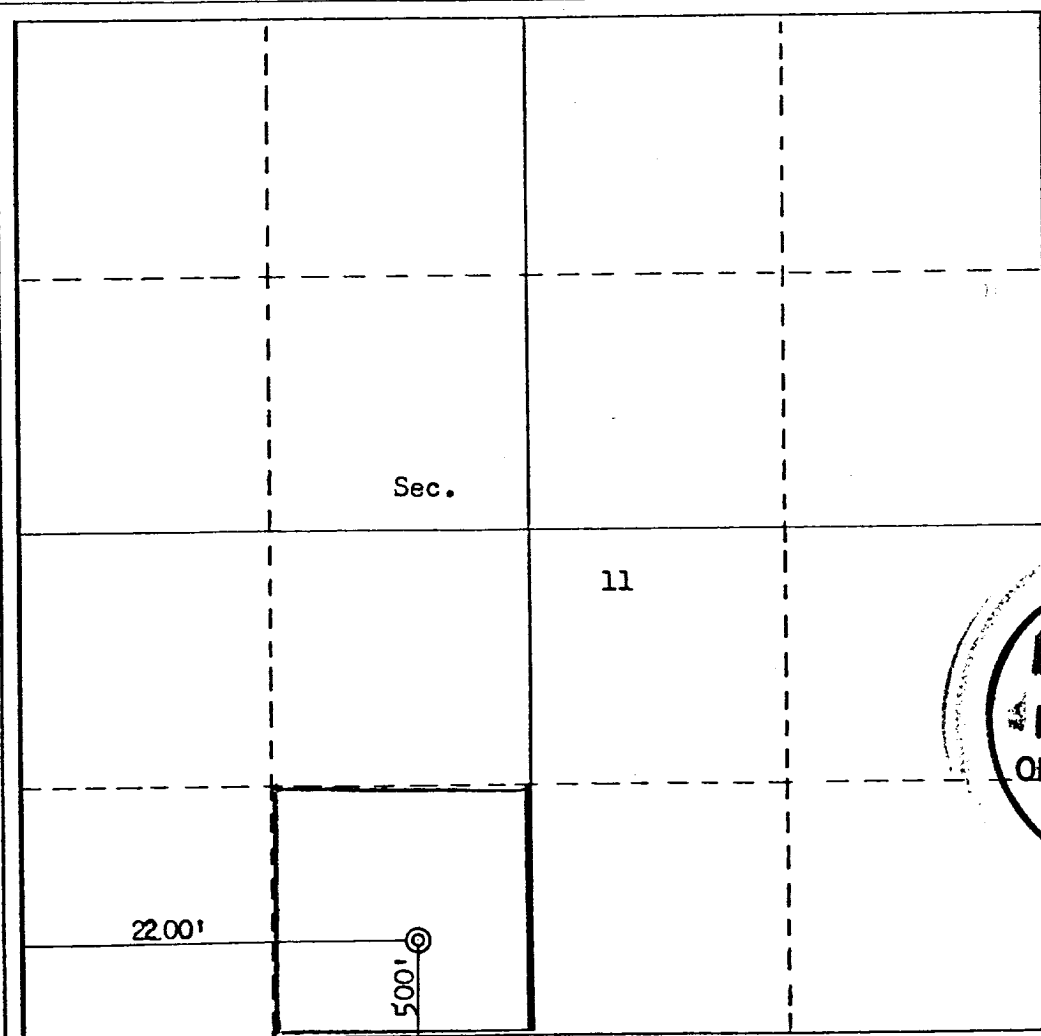
Operator DOME PETROLEUM CORPORATION		Lease DOME-FEDERAL 11-20-2		Well No. 1
Unit Letter N	Section 11	Township 20N	Range 2W	County Sandoval
Actual Footage Location of Well: 500 feet from the South line and 2200 feet from the West line				
Ground Level Elev. 6801	Producing Formation ENTRADA		Well <i>Wildcat</i> UNDESIGNATED ENTRADA	Dedicated Acreage: 40 Acres

1. Outline the acreage dedicated to the subject well by colored pencil or hatchure marks on the plat below.
2. If more than one lease is dedicated to the well, outline each and identify the ownership thereof (both as to working interest and royalty).
3. If more than one lease of different ownership is dedicated to the well, have the interests of all owners been consolidated by communitization, unitization, force-pooling, etc?

☐ Yes ☐ No If answer is "yes," type of consolidation _____

If answer is "no," list the owners and tract descriptions which have actually been consolidated. (Use reverse side of this form if necessary.) _____

No allowable will be assigned to the well until all interests have been consolidated (by communitization, unitization, forced-pooling, or otherwise) or until a non-standard unit, eliminating such interests, has been approved by the Commission.



CERTIFICATION

I hereby certify that the information contained herein is true and complete to the best of my knowledge and belief.

H.D. Hollingsworth
Name

H.D. HOLLINGSWORTH

Position

DRLG & PRODUCTION FOREMAN

Company

DOME PETROLEUM CORPORATION

Date

February 4, 1980

I hereby certify that the well location plotted on this plat was plotted from field notes and/or surveys made by me or under my supervision, and that the same are true and correct to the best of my knowledge and belief.

RECEIVED
FEB 22 1980
OIL CON. COM.
DIST. 3

Date Surveyed

Frederick B. Kerr
January 19, 1980
Registered Professional Engineer
and/or Land Surveyor

Frederick B. Kerr
Certification No. **3950**
NEW MEXICO
FRED B. KERR, JR.