

UNITED STATES
DEPARTMENT OF THE INTERIOR
GEOLOGICAL SURVEY

APPLICATION FOR PERMIT TO DRILL, DEEPEN, OR PLUG BACK

1a. TYPE OF WORK

DRILL ☒DEEPEN ☐PLUG BACK ☐

b. TYPE OF WELL

OIL
WELL ☒GAS
WELL ☐OTHER ☐SINGLE
ZONE ☒MULTIPLE
ZONE ☐

2. NAME OF OPERATOR

DOME PETROLEUM CORPORATION

3. ADDRESS OF OPERATOR

501 Airport Drive, Suite 107, Farmington, New Mexico 87401

4. LOCATION OF WELL (Report location clearly and in accordance with any State requirements.*)
At surface

1650'FNL, 2000'FEL

At proposed prod. zone

14. DISTANCE IN MILES AND DIRECTION FROM NEAREST TOWN OR POST OFFICE*

30 miles Southwest of Cuba, New Mexico

15. DISTANCE FROM PROPOSED*

LOCATION TO NEAREST
PROPERTY OR LEASE LINE, FT.
(Also to nearest drlg. unit line, if any)

16. NO. OF ACRES IN LEASE

2572.61

18. DISTANCE FROM PROPOSED LOCATION*
TO NEAREST WELL, DRILLING, COMPLETED,
OR APPLIED FOR, ON THIS LEASE, FT.

19. PROPOSED DEPTH

3450'

21. ELEVATIONS (Show whether DF, RT, GR, etc.)

6340'GR

23.

PROPOSED CASING AND CEMENTING PROGRAM

| SIZE OF HOLE | SIZE OF CASING | WEIGHT PER FOOT | SETTING DEPTH | QUANTITY OF CEMENT |
|--------------|----------------|-----------------|---------------|--------------------------------|
| 13½" | 9 5/8" | 32.3# | 200' | 200 sacks (circulated) |
| 8¾" | 7" | 20# & 23# | 3450' | 500 sacks (2 stage circulated) |

Move in rotary tools. Drill 13½" hole to 200'. Set 200' new 9 5/8", H-40 casing. Cement with 200 sx. class "B" cement with 2% C_{AC}. Wait on cement 12 hours. Install 10" 900 series BOP. Test to 500 psi before drilling out from under surface pipe. Check pipe rams daily and blind rams on trips. Drill 8¾" hole to TD. The geologic name of the surface formation is Mesa Verde. Oil is expected in the Entrada. All other formations are probably water bearing. Pertinent formation tops are estimated as Gallup 1300, Dakota 2240, Morrison 2560, Todilto 3350, and Entrada 3362. Mud system will be low solids nondispersed. Mud weight 8.5-9.2 #/Gal. FL8-10cc, Viscosity 30-50 Sec/Quart. No abnormal temperatures or pressures are anticipated. Logging program will be DIL, FDC/CNL/GR with caliper log. Drill stem test will be run where necessary for evaluation. If productive 7", 20# & 23#, K55 casing will be run and cemented in two stages with 65/35 Pozmix, 6% Gel, 10# Gilsonite/sx. followed with 100 sacks class "B" cement with 10% salt. Drilling should require approximately 15 days.

IN ABOVE SPACE DESCRIBE PROPOSED PROGRAM: If proposal is to deepen or plug back, give data on present productive zone and proposed new productive zone. If proposal is to drill or deepen directionally, give pertinent data on subsurface locations and measured and/or vertical depths. Give blowout preventer program, if any.

24.

SIGNED

H. D. HOLLINGSWORTH

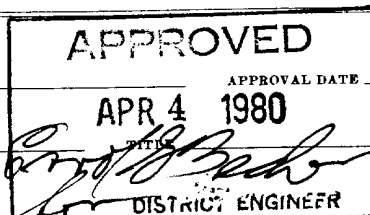
TITLE Drilling & Production Foreman DATE 3/4/80

(This space for Federal or State office use)

PERMIT NO.

APPROVED BY

CONDITIONS OF APPROVAL, IF ANY:

DRILLING OPERATIONS AUTHORIZED ARE
SUBJECT TO COMPLIANCE WITH ATTACHED
"GENERAL REQUIREMENTS".MAR 6 1980
U. S. GEOLOGICAL SURVEY
DURANGO, COLO.

All distances must be from the outer boundaries of the Section

| | | | | |
|---|----------------------|--------------------------------------|--------------------|---------------------------|
| Operator DOME PETROLEUM CORPORATION | | Lease DOME-FEDERAL 27-17-3 | | Well No. 1 |
| Unit Letter G | Section 27 | Township 17N | Range 3W | County Sandoval |

Actual Footage Location of Well:

1650 feet from the **North** line and **2000** feet from the **East** line

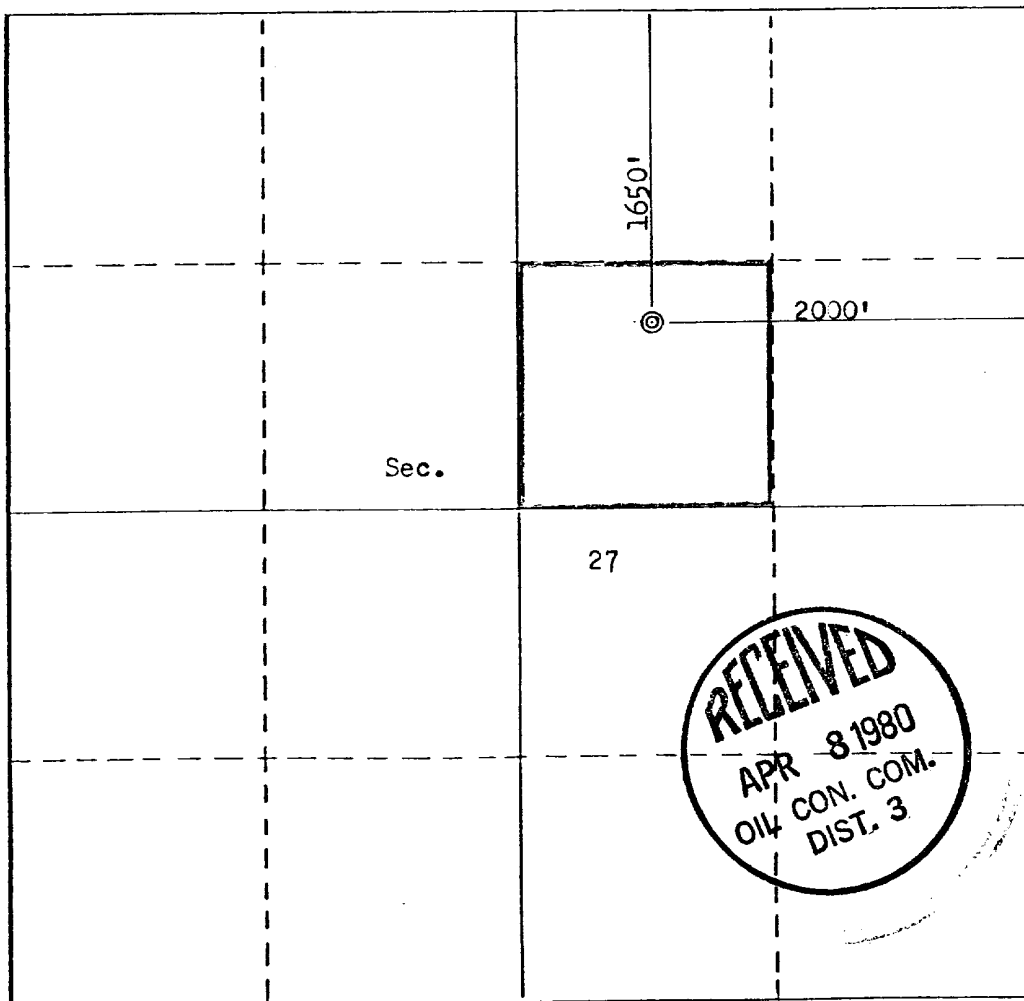
| | | | |
|-----------------------------------|---------------------------------------|-------------------------------------|---------------------------------------|
| Ground Level Elev. 6340 | Producing Formation Entrada | Pool Undesignated Entrada | Dedicated Acreage: 40 Acres |
|-----------------------------------|---------------------------------------|-------------------------------------|---------------------------------------|

- Outline the acreage dedicated to the subject well by colored pencil or hachure marks on the plat below.
- If more than one lease is dedicated to the well, outline each and identify the ownership thereof (both as to working interest and royalty).
- If more than one lease of different ownership is dedicated to the well, have the interests of all owners been consolidated by communitization, unitization, force-pooling, etc?

☐ Yes ☐ No If answer is "yes," type of consolidation _____

If answer is "no," list the owners and tract descriptions which have actually been consolidated. (Use reverse side of this form if necessary.) _____

No allowable will be assigned to the well until all interests have been consolidated (by communitization, unitization, forced-pooling, or otherwise) or until a non-standard unit, eliminating such interests, has been approved by the Commission.



CERTIFICATION

I hereby certify that the information contained herein is true and complete to the best of my knowledge and belief.

H. D. Hollingsworth
Name

H. D. HOLLINGSWORTH
Position

Drilling & Prod. Foreman
Company

DOME PETROLEUM CORPORATION
Date

3/5/80

I hereby certify that the well location shown on this plat was plotted from field notes of actual surveys made by me or under my supervision, and that the same is true and correct to the best of my knowledge and belief.

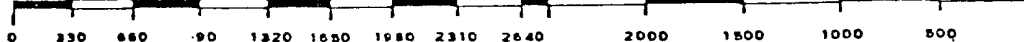
Date Surveyed

March 2, 1980

Registered Professional Engineer and Land Surveyor

Fred B. Kerr Jr.
Fred B. Kerr Jr.

Certificate No. **3950**





DOME PETROLEUM CORP.

SUITE 1400, COLORADO STATE BANK BLDG.

1600 BROADWAY

DENVER, COLORADO 80202

TELEPHONE
(303) 861-1230

Development Plan For Surface Use

DOME FEDERAL 27-17-3, WELL #1
1650'FNL, 2000'FEL
Sec. 27, T17N, R3W
SANDOVAL COUNTY, NEW MEXICO

1. Existing Roads

The main road to the location is Highway 44, 22 miles South of Cuba, New Mexico and using existing side roads as shown on the attached topographic map.

2. Planned Access Roads

The access road, to be routed as shown on attached map, will be 18' wide with adequate ditch and water bars.

3. Location Of Existing Wells

None

4. Location Of Proposed Facilities

Flowline and tank battery will be on location pad. Equipment and pits will be fenced as required for protection of livestock and wildlife.

5. Location And Type Of Water Supply

To be hauled from BLM water well near Cabezon.

6. Source Of Construction Materials

Not applicable.

7. Method Of Handling Waste Material

All garbage and trash that can be burned shall be burned. All trash that cannot be burned will be contained in a trash pit and covered with a minimum of 24" of dirt. All drilling waste, that is cuttings, overflows of oil, water, or drilling fluids will be contained in the reserve pit and buried with adequate cover upon completion of operations. The reserve pit will be fenced until cleanup operations are commenced. Toilet facilities will be provided.

8. Ancillary Facilities

No camps or airstrips are proposed for this location.

DOME PETROLEUM CORP.
Development Plan For Surface Use
DOME FEDERAL 27-17-3, WELL #1

9. Well Site Layout

10. Plans For Restoration Of Surface

Cleanup of location will commence immediately following the removal of the drilling equipment. The reserve pit will be fenced until restoration operations are commenced. The location will be returned to original contour if the well is not productive. Both the road and location will be reseeded in accordance with BLM Specifications.

11. Other Information

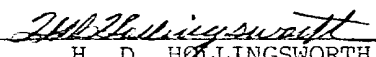
This location is on sparsely vegetated sandy land. Vegetation consists principally of sagebrush and native grasses.

12. Lessee's Or Operator's Representative

H. D. Hollingsworth
Dome Petroleum Corp.
501 Airport Drive, Suite 107
Farmington, New Mexico 87401
Phone: 505-325-2897 Office
505-327-1548 Home

13. Certification

I hereby certify that I, or persons under my direct supervision, have inspected the proposed drill site and access route; that I am familiar with the conditions which presently exist; that the statements made in this plan are, to the best of my knowledge, true and correct; and that the work associated with the operations proposed herein will be performed by Dome Petroleum Corp. and it's contractors and subcontractors in conformity with this plan and the terms and conditions under which it is approved.


H. D. HOLLINGSWORTH
Drilling & Production Foreman
Dome Petroleum Corporation

3/4/80

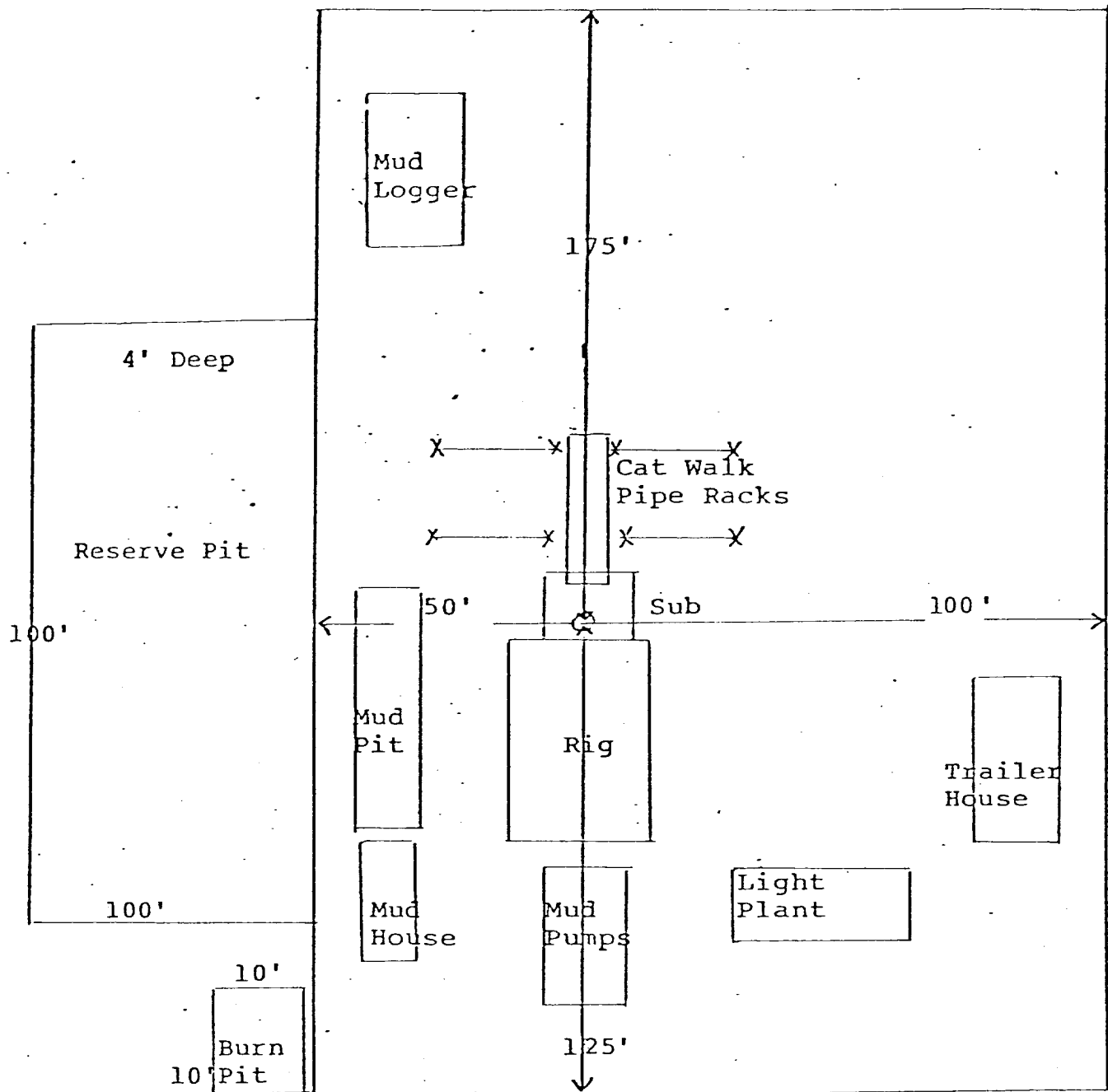
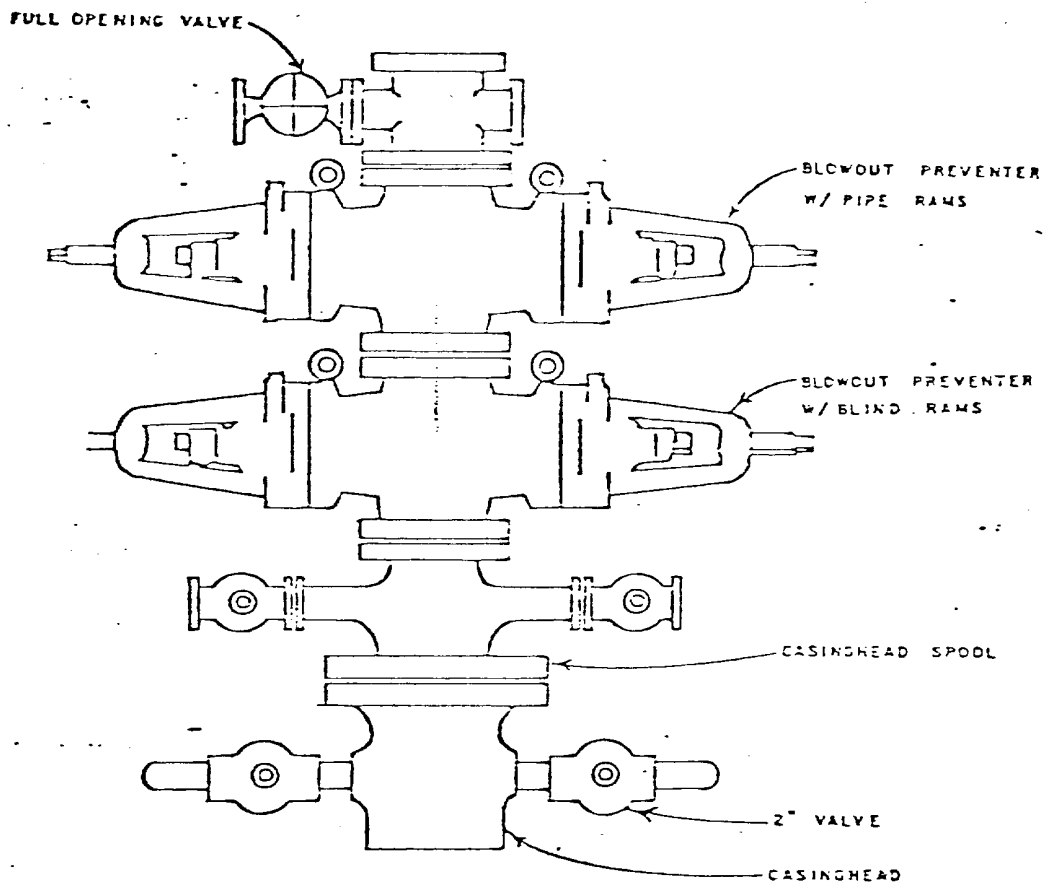


DIAGRAM OF WELL LOCATION
AND DRILLING RIG LAYOUT



DOME PETROLEUM CORP.

SUITE 1500, COLORADO STATE BANK BLDG.

1600 BROADWAY

DENVER, COLORADO 80202

STANDARD BLOWOUT PREVENTER ASSEMBLY
10" 900 SERIES

