

UNITED STATES
DEPARTMENT OF THE INTERIOR
GEOLOGICAL SURVEY

APPLICATION FOR PERMIT TO DRILL, DEEPEN, OR PLUG BACK

1a. TYPE OF WORK

DRILL ☒DEEPEN ☐PLUG BACK ☐

b. TYPE OF WELL

OIL
WELL ☒GAS
WELL ☐OTHER ☐SINGLE
ZONE ☒MULTIPLE
ZONE ☐

2. NAME OF OPERATOR

DOME PETROLEUM CORPORATION

3. ADDRESS OF OPERATOR

501 Airport Drive, Suite 107, Farmington, New Mexico 87401

4. LOCATION OF WELL (Report location clearly and in accordance with any State requirements.)*
At surface

660' FNL, 660' FWL

At proposed prod. zone

14. DISTANCE IN MILES AND DIRECTION FROM NEAREST TOWN OR POST OFFICE*

15 miles West of Cuba, New Mexico

15. DISTANCE FROM PROPOSED*
LOCATION TO NEAREST
PROPERTY OR LEASE LINE, FT.
(Also to nearest drlg. unit line, if any)

16. NO. OF ACRES IN LEASE

1520

18. DISTANCE FROM PROPOSED LOCATION*
TO NEAREST WELL, DRILLING, COMPLETED,
OR APPLIED FOR, ON THIS LEASE, FT.

19. PROPOSED DEPTH

5900

17. NO. OF ACRES ASSIGNED
TO THIS WELL

40

20. ROTARY OR CABLE TOOLS

Rotary

21. ELEVATIONS (Show whether DF, RT, GR, etc.)

6755' GR.

22. APPROX. DATE WORK WILL START*

April 1, 1980

23.

PROPOSED CASING AND CEMENTING PROGRAM

SIZE OF HOLE	SIZE OF CASING	WEIGHT PER FOOT	SETTING DEPTH	QUANTITY OF CEMENT
13 1/2"	9 5/8"	32.3#	200'	200 sacks (circulated)
8 3/4"	7"	20# & 23#	5900'	900 sacks (2 stage circulated)

Move in rotary tools. Drill 13 1/2" hole to 200'. Set 200' of new 9 5/8", H-40 casing. Cement with 200 sx class "B" cement with 2% CACL. Wait on cement 12 hours. Install 10" 900 series BOP. Test to 500 psi before drilling out from under surface pipe. Check pipe rams daily and blind rams on trips. Drill 8 3/4" hole to TD. The geologic name of the surface formation is Ojo Alamo. Oil is expected in the Entrada. All other formations are probably water bearing. Pertinent formation tops are estimated as Point Lookout 2438, Gallup 3528, Dakota 4760, Morrison 4883, Todilto 5743, and Entrada 5776. Mud system will be low solids nondispersed. Mud weight 8.5-9.2 #/Gal. FL8-10cc, Viscosity 30-50 Sec/Quart. No abnormal temperatures or pressures are anticipated. Logging program will be DIL, FDC/CNL/GR with caliper log. Drill stem test will be taken where necessary for evaluation. If productive 7", 20# & 23#, K55 casing will be run and cemented in two stages with 65/35 Pozmix, 6% Gel, 10# Gilsonite/sx. followed with 100 sacks class "B" cement with 10% salt. Drilling should require approximately 15 days.

IN ABOVE SPACE DESCRIBE PROPOSED PROGRAM: If proposal is to deepen or plug back, give data on present productive zone and proposed new productive zone. If proposal is to drill or deepen directionally, give pertinent data on subsurface locations and measures and give vertical depth. Give blowout preventer program, if any.

24.

SIGNED

H. D. HOLLINGSWORTH
(This space for Federal or State office use)

TITLE Drilling & Production Foreman 3/4/80

PERMIT NO.

APPROVED BY

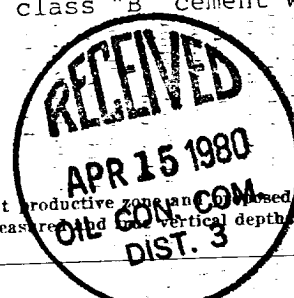
CONDITIONS OF APPROVAL, IF ANY:

TITLE

APPROVED
AS AMENDEDAPR 8 1980
JAMES F. SMIS
DISTRICT ENGINEER

DATE

MAR 6 1980

DRILLING OPERATIONS AUTHORIZED ARE
SUBJECT TO COMPLIANCE WITH ATTACHED
"GENERAL REQUIREMENTS"

OIL CONSERVATION DIVISION

P. O. BOX 2088

Form C-107
Revised 10-1-78

STATE OF NEW MEXICO

ENERGY AND MINERALS DEPARTMENT

SANTA FE, NEW MEXICO 87501

All distances must be from the outer boundaries of the Section

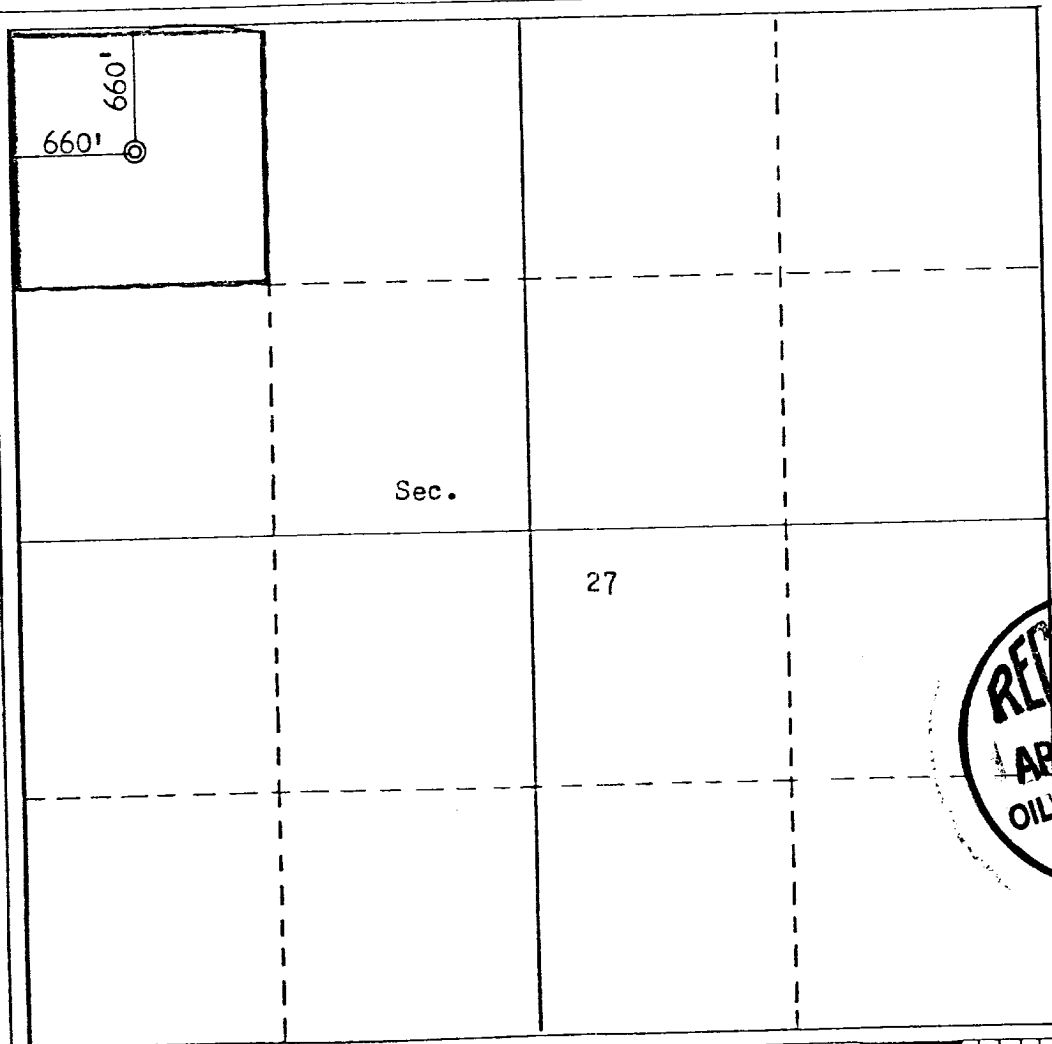
Operator DOME PETROLEUM CORPORATION		Lease DOME-FEDERAL 27-20-3		Well No. 1
Unit Letter D	Section 27	Township 20N	Range 3W	County Sandoval
Actual Footage Location of Well: 660 feet from the North line and 660 feet from the West line				
Ground Level Elev. 6755	Producing Formation Entrada	Pool WE Undesignated Entrada		Dedicated Acreage: 40 Acres

1. Outline the acreage dedicated to the subject well by colored pencil or hachure marks on the plat below.
2. If more than one lease is dedicated to the well, outline each and identify the ownership thereof (both as to working interest and royalty).
3. If more than one lease of different ownership is dedicated to the well, have the interests of all owners been consolidated by communitization, unitization, force-pooling, etc?

☐ Yes ☐ No If answer is "yes," type of consolidation _____

If answer is "no," list the owners and tract descriptions which have actually been consolidated. (Use reverse side of this form if necessary.) _____

No allowable will be assigned to the well until all interests have been consolidated (by communitization, unitization, forced-pooling, or otherwise) or until a non-standard unit, eliminating such interests, has been approved by the Commission.



CERTIFICATION

I hereby certify that the information contained herein is true and complete to the best of my knowledge and belief.

H. D. Hollingsworth
Name
H. D. HOLLINGSWORTH
Position
Drilling & Production Foreman
Company
DOME PETROLEUM CORP.
Date
3/4/80

I hereby certify that the well location shown on this plat was plotted from field notes of actual surveys made by me or under my supervision, and that the same is true and correct to the best of my knowledge and belief.

RECEIVED
APR 15 1980
OIL CON. COM.
DIST. 3
Date Surveyed
March 2, 1980
Registered Professional Engineer
and/or Land Surveyor
Fred B. Kerr Jr.
Fred B. Kerr Jr.
Certificate No. 3950



DOME PETROLEUM CORP.

SUITE 1400, COLORADO STATE BANK BLDG.

1600 BROADWAY

DENVER, COLORADO 80202

TELEPHONE
(303) 861-1230

Development Plan For Surface Use

DOME FEDERAL 27-20-3, WELL #1
660'FNL, 660'FWL
Sec. 27, T20N, R3W
SANDOVAL COUNTY, NEW MEXICO

1. Existing Roads

The main road to the location is Highway 197 from Cuba, New Mexico towards Torreion Trading Post 9 miles and using existing side roads as shown on the attached topographic map.

2. Planned Access Roads

The access road, to be routed as shown on attached map, will be 18' wide with adequate ditch and water bars.

3. Location Of Existing Wells

None

4. Location Of Proposed Facilities

Flowline and tank battery will be on location pad. Equipment and pits will be fenced as required for protection of livestock and wildlife.

5. Location And Type Of Water Supply

To be hauled from Eugene Johnson's water hole located 6 miles out of Cuba, New Mexico, on Highway 197.

6. Source Of Construction Materials

Not applicable.

7. Method Of Handling Waste Material

All garbage and trash that can be burned shall be burned. All trash that cannot be burned will be contained in a trash pit and covered with a minimum of 24" of dirt. All drilling waste, that is cuttings, overflows of oil, water, or drilling fluids will be contained in the reserve pit and buried with adequate cover upon completion of operations. The reserve pit will be fenced until cleanup operations are commenced. Toilet facilities will be provided.

8. Ancillary Facilities

No camps or airstrips are proposed for this location.

Page 2-

DOME PETROLEUM CORP.
Development Plan For Surface Use
DOME FEDERAL 27-20-3, WELL #1

9. Well Site Layout

See attached diagram.

10. Plans For Restoration Of Surface

Cleanup of location will commence immediately following the removal of the drilling equipment. The reserve pit will be fenced until restoration operations are commenced. The location will be returned to original contour if the well is not productive. Both the road and location will be reseeded in accordance with BLM Specifications.

11. Other Information

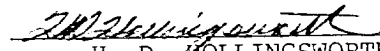
This location is on sparsely vegetated sandy land. Vegetation consists principally of sagebrush and native grasses.

12. Lessee's Or Operator's Representative

H. D. Hollingsworth
Dome Petroleum Corp.
501 Airport Drive, Suite 107
Farmington, New Mexico 87401
Phone: 505-325-2897 Office
505-327-1548 Home

13. Certification

I hereby certify that I, or persons under my direct supervision, have inspected the proposed drill site and access route; that I am familiar with the conditions which presently exist; that the statements made in this plan are, to the best of my knowledge, true and correct; and that the work associated with the operations proposed herein will be performed by Dome Petroleum Corp. and it's contractors and subcontractors in conformity with this plan and the terms and conditions under which it is approved.


H. D. HOLLINGSWORTH
Drilling & Production Foreman
Dome Petroleum Corp.

3/4/80

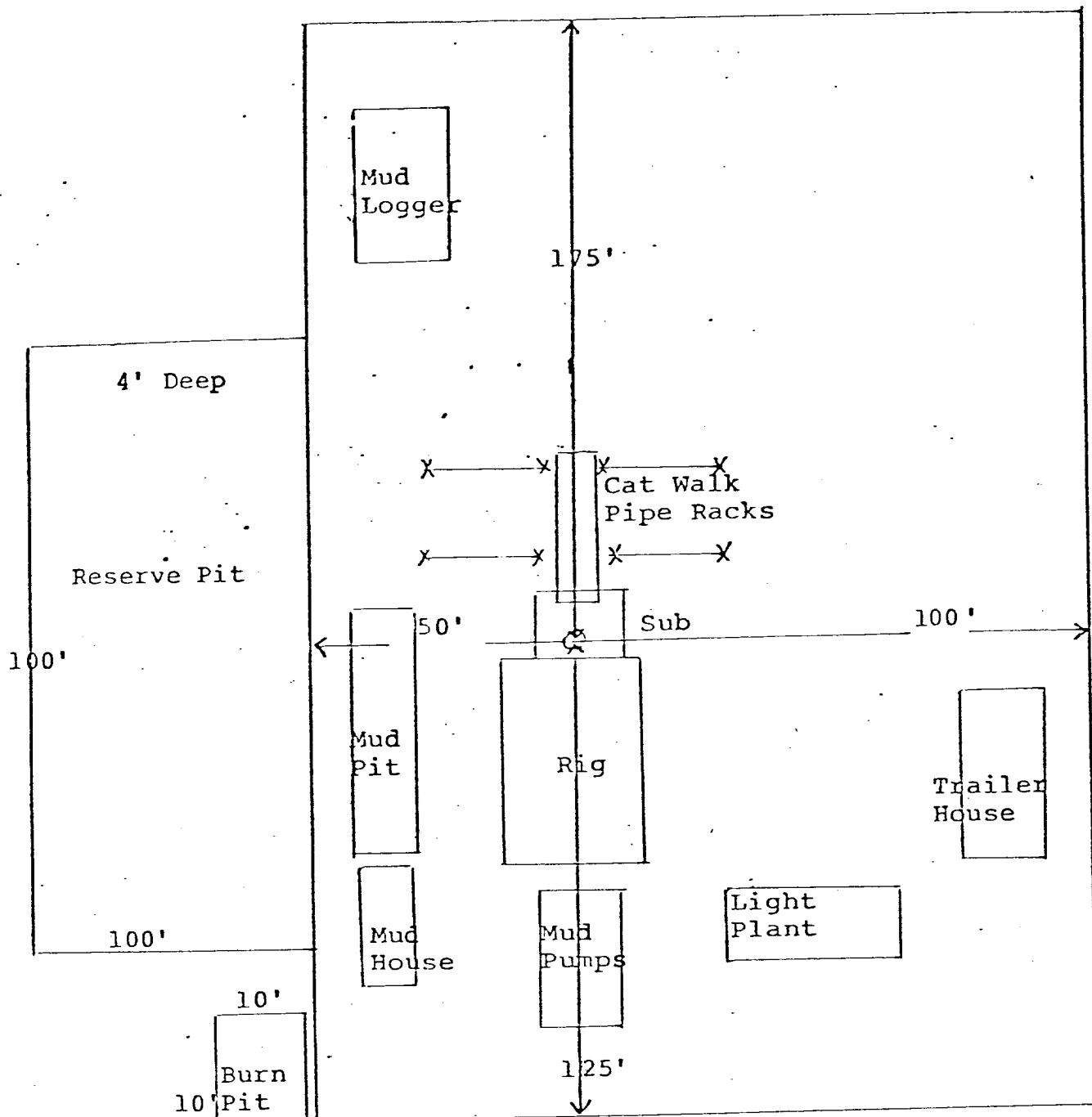
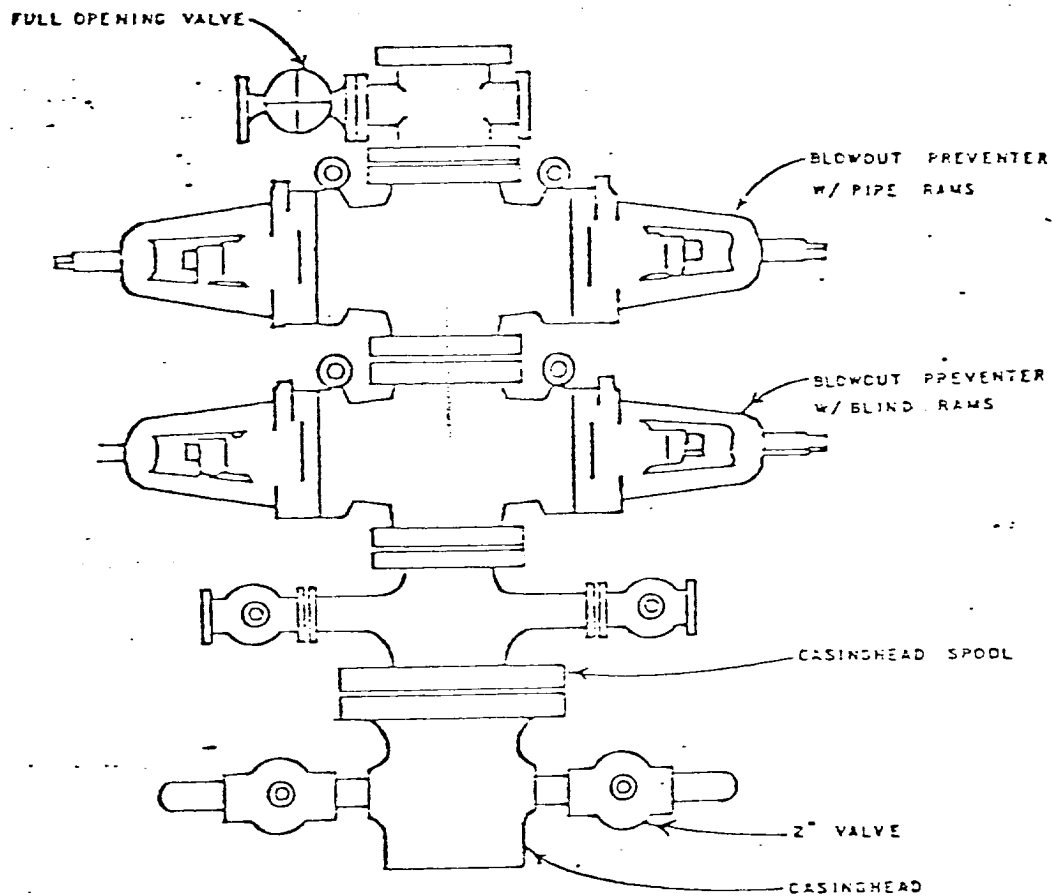


DIAGRAM OF WELL LOCATION
AND DRILLING RIG LAYOUT



DOME PETROLEUM CORP.

SUITE 1500, COLORADO STATE BANK BLDG.

1600 BROADWAY

DENVER, COLORADO 80202

STANDARD BLOWOUT PREVENTER ASSEMBLY
10" 900 SERIES