

UNITED STATES  
DEPARTMENT OF THE INTERIOR  
GEOLOGICAL SURVEY

## APPLICATION FOR PERMIT TO DRILL, DEEPEN, OR PLUG BACK

## 1a. TYPE OF WORK

DRILL ☒DEEPEN ☐PLUG BACK ☐

## b. TYPE OF WELL

OIL  
WELL ☐GAS  
WELL ☒

OTHER

SINGLE  
ZONE ☒MULTIPLE  
ZONE ☐

## 2. NAME OF OPERATOR

DOME PETROLEUM CORP.

## 3. ADDRESS OF OPERATOR

501 Airport Drive, Suite 107, Farmington, New Mexico 87401

## 4. LOCATION OF WELL (Report location clearly and in accordance with any State requirements.)\*

At surface

1820' FSL, 1570' FWL

At proposed prod. zone

## 14. DISTANCE IN MILES AND DIRECTION FROM NEAREST TOWN OR POST OFFICE\*

9 miles West of Counselors Trading Post

## 15. DISTANCE FROM PROPOSED\*

LOCATION TO NEAREST  
PROPERTY OR LEASE LINE, FT.  
(Also to nearest drlg. unit line, if any)

## 18. DISTANCE FROM PROPOSED LOCATION\*

TO NEAREST WELL, DRILLING, COMPLETED,  
OR APPLIED FOR, ON THIS LEASE, FT.

## 21. ELEVATIONS (Show whether DF, RT, GR, etc.)

6801' GR

## 23.

## PROPOSED CASING AND CEMENTING PROGRAM

SIZE OF HOLE	SIZE OF CASING	WEIGHT PER FOOT	SETTING DEPTH	AMOUNT OF CEMENT
12 1/4"	8 5/8"	23#	100'	75 sacks (cemented) CIAE
6 1/2"	4 1/2"	10.5#	1920'	375 sacks (cemented) CIAE

Move in rotary tools. Drill 12 1/4" hole to 100'. Set 100' of new 8 5/8", 23# K55 casing. Cement with 75 sacks class "B" cement with 2% CaCl. Wait on cement 12 hours. Install 6" 900 Series blowout preventer. Test to 500 psi before drilling out from under surface pipe. Check pipe rams daily and blind rams on trips. Drill 6 1/2" hole to T.D. The geologic name of the surface formation is Tertiary Nacimiento. Gas is expected in the Chacra. All other formations are probably water bearing. Pertinent formation tops are estimated as: Kirtland 240'; Fruitland 550'; Pictured Cliff 1110'; Chacra 1470'; and Cliffhouse 1890'. Mud system will be low solids nondispersed. Mud weight 8.8-9.2#/Gal., F.L. 8-10 cc, viscosity 30-50 sec./quart. No abnormal temperatures or pressures are anticipated. Logging program will be DIL, FDC/CNL/GR with Caliper Log. Drill stem test will be taken where necessary for evaluation. If productive 4 1/2", 10.5#, K55 casing will be run and cemented w/275 sx. 65/35 Pozmix, 6% Gel, and 10# Gilsonite/sx., followed with 100 sx. class B cement w/10% salt. Drilling should require approximately 6 days.

IN ABOVE SPACE DESCRIBE PROPOSED PROGRAM: If proposal is to deepen or plug back, give data on present productive zone and proposed new productive zone. If proposal is to drill or deepen directionally, give pertinent data on subsurface locations and measured and true vertical depths. Give blowout preventer program, if any.

## 24.

SIGNED

H. D. BOLLINGSWORTH

TITLE Drlg. &amp; Prod. Foreman

DATE 5/02/80

(This space for Federal or State office use)

PERMIT NO.

APPROVAL DATE

APPROVED BY

TITLE

CONDITIONS OF APPROVAL, IF ANY:

DRILLING OPERATIONS AUTHORIZED ARE  
IN ACCORDANCE WITH ATTACHED  
STATE REQUIREMENTS

NMOCC

# OI CONSERVATION DIVISION

STATE OF NEW MEXICO  
ENERGY AND MINERALS DEPARTMENT

P. O. BOX 2088  
SANTA FE, NEW MEXICO 87501

Form C-107  
Revised 10-1-78

All distances must be from the outer boundaries of the Section.

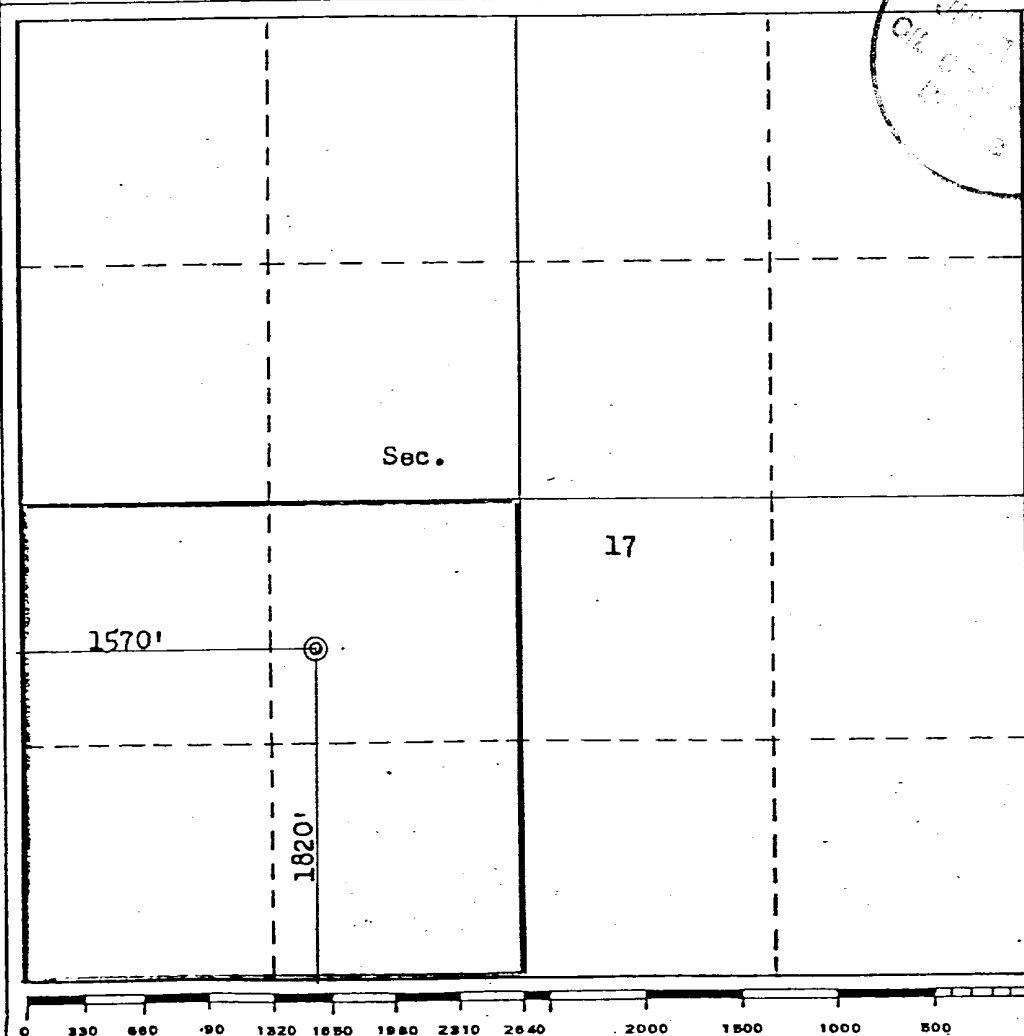
Operator <b>DOME PETROLEUM CORPORATION</b>			Lease <b>DOME-NAVAJO 17-22-7</b>		Well No. <b>2</b>
Unit Letter <b>K</b>	Section <b>17</b>	Township <b>22N</b>	Range <b>7W</b>	County <b>Sandoval</b>	
Actual Footage Location of Well: <b>1820</b> feet from the <b>South</b> line and <b>1570</b> feet from the <b>West</b> line					
Ground Level Elev. <b>6801</b>	Producing Formation <b>Chacra</b>		Pool <b>Rusty Chacra Extension</b>		Dedicated Acreage: <b>160 Acres</b>

1. Outline the acreage dedicated to the subject well by colored pencil or hachure marks on the plat below.
2. If more than one lease is dedicated to the well, outline each and identify the ownership thereof (both as to working interest and royalty).
3. If more than one lease of different ownership is dedicated to the well, have the interests of all owners been consolidated by communitization, unitization, force-pooling, etc?

☐ Yes ☐ No If answer is "yes," type of consolidation \_\_\_\_\_

If answer is "no," list the owners and tract descriptions which have actually been consolidated. (Use reverse side of this form if necessary.) \_\_\_\_\_

No allowable will be assigned to the well until all interests have been consolidated (by communitization, unitization, forced-pooling, or otherwise) or until a non-standard unit, eliminating such interests, has been approved by the Commission.



## CERTIFICATION

I hereby certify that the information contained herein is true and complete to the best of my knowledge and belief.

Name

**H. D. HOLLINGSWORTH**

Position

**Drilling & Production Foreman**

Company

**DOME PETROLEUM CORP.**

Date

**May 5, 1980**

I hereby certify that the well location shown on this plat was plotted from field notes of actual surveys made by me or under my supervision, and that the same is true and correct to the best of my knowledge and belief.

Date Surveyed

**May 5, 1980**

Registered Professional Engineer and/or Land Surveyor

**Kerr B. Kerr Jr.**

Certificate No.

**3958 KERR, JR.**



# DOME PETROLEUM CORP.

SUITE 1400, COLORADO STATE BANK BLDG.

1600 BROADWAY

DENVER, COLORADO 80202

Development Plan For Surface Use

TELEPHONE  
(303) 861-1230

DOME NAVAJO 17-22-7, WELL #2

1820' FSL, 1570' FWL

Sec. 17, T22N, R7W

SANDOVAL COUNTY, NEW MEXICO

## 1. Existing Roads

The main road to location is that from Councilors Trading Post to Pueblo Pintado, leaving this road approximately 9 miles South of Counselors and using existing side road.

## 2. Planned Access Roads

The access road, to be routed as shown on the attached map, will be approximately 100' long and 18' wide with adequate ditch and water bars.

## 3. Location Of Existing Wells

Existing wells within one mile of location are shown on the attached topographic map.

## 4. Location Of Proposed Facilities

Development of commercial gas production will require separation facilities on the location pad. Equipment and pits will be fenced as required for protection of livestock and wildlife. Above ground facilities will be painted brown or grey to blend in with the surrounding area as specified by the BLM. The disturbed areas no longer needed for operations after well completion will be restored to natural contour and reseeded.

## 5. Location & Type Of Water Supply

To be hauled from Escrito, approximately 25 miles to the North.

## 6. Source Of Construction Materials

Not applicable.

## 7. Method Of Handling Waste Material

All garbage and trash that can be burned shall be burned. All trash that cannot be burned will be contained in a trash pit and covered with a minimum of 24 inches of dirt. All drilling waste such as cuttings, overflows of oil, water, and drilling fluids will be contained in the reserve pit and buried with adequate cover upon completion of operations. The reserve pit will be fenced until cleanup operations are commenced. Toilet facilities will be provided.

8. Ancillary Facilities

No camps or airstrips are proposed for this location.

9. Well Site Layout

See attached diagram.

10. Plans For Restoration Of Surface

Cleanup of the location will commence immediately following the removal of the drilling equipment. The reserve pit will be fenced until restoration operations are commenced. The location will be returned to original contour if the well is not productive. Both the road and location will be reseeded in accordance with BLM specifications.

11. Other Information

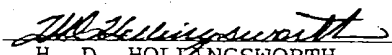
This location is on sparsely vegetated sandy land. Vegetation consists principally of sagebrush and native grasses. There is no water source in the immediate area.

12. Lessee's Or Operator's Representative

Dome Petroleum Corporation  
E. D. Hollingsworth  
501 Airport Drive, Suite 107  
Farmington, New Mexico 87401  
Phone: 505-325-2897 Office  
505-327-1548 Home

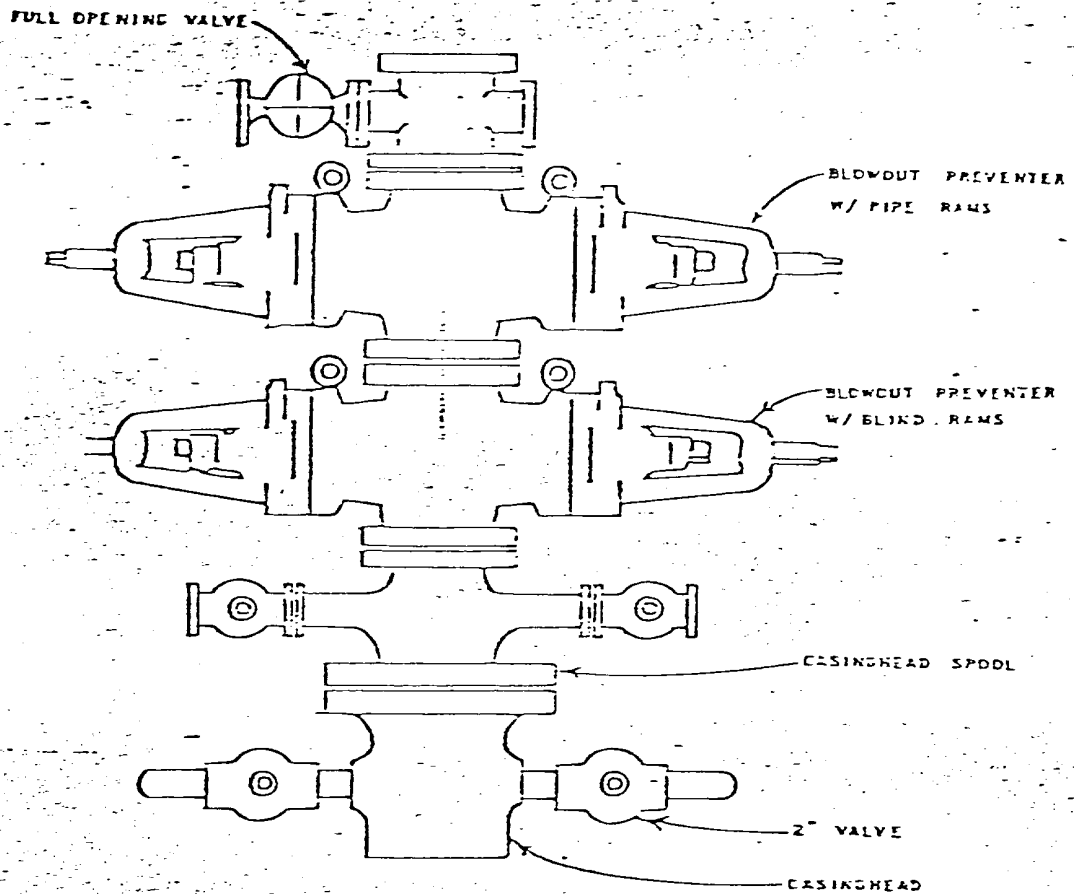
13. Certification

I hereby certify that I, or persons under my direct supervision, have inspected the proposed drill site and access route; that I am familiar with the conditions which presently exist; that the statements made in this plan are, to the best of my knowledge, true and correct; and that the work associated with the operations proposed herein will be performed by Dome Petroleum Corp. and its contractors and subcontractors in conformity with this plan and the terms and conditions under which it is approved.

  
H. D. HOLLINGSWORTH

Drilling & Production Foreman  
Dome Petroleum Corporation

HDL:ig  
May 2, 1980



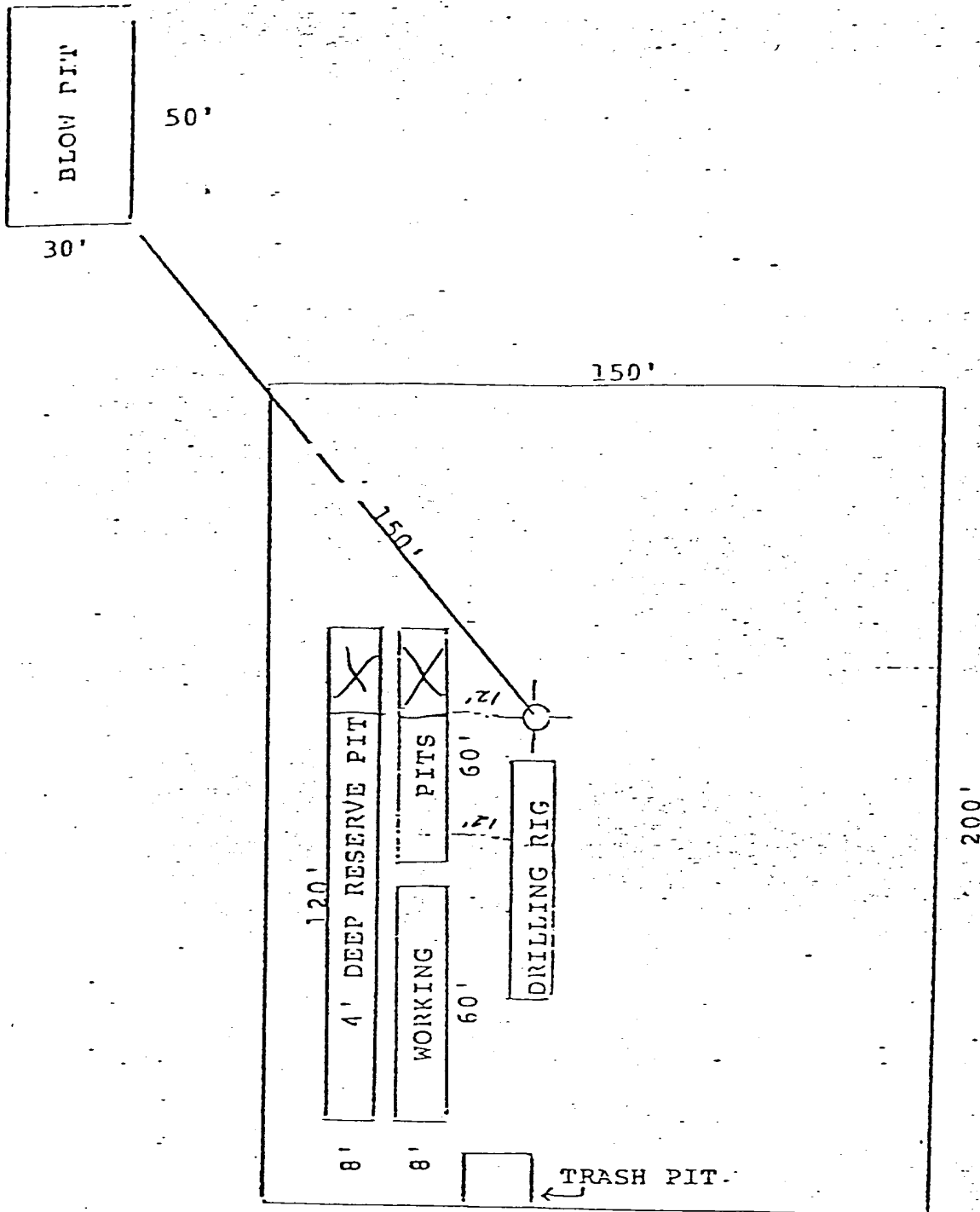
## DOME PETROLEUM CORP.

SUITE 1500, COLORADO STATE BANK BLDG.

1600 BROADWAY

DENVER, COLORADO 80202

STANDARD BLOWOUT PREVENTER ASSEMBLY  
6" 900 SERIES

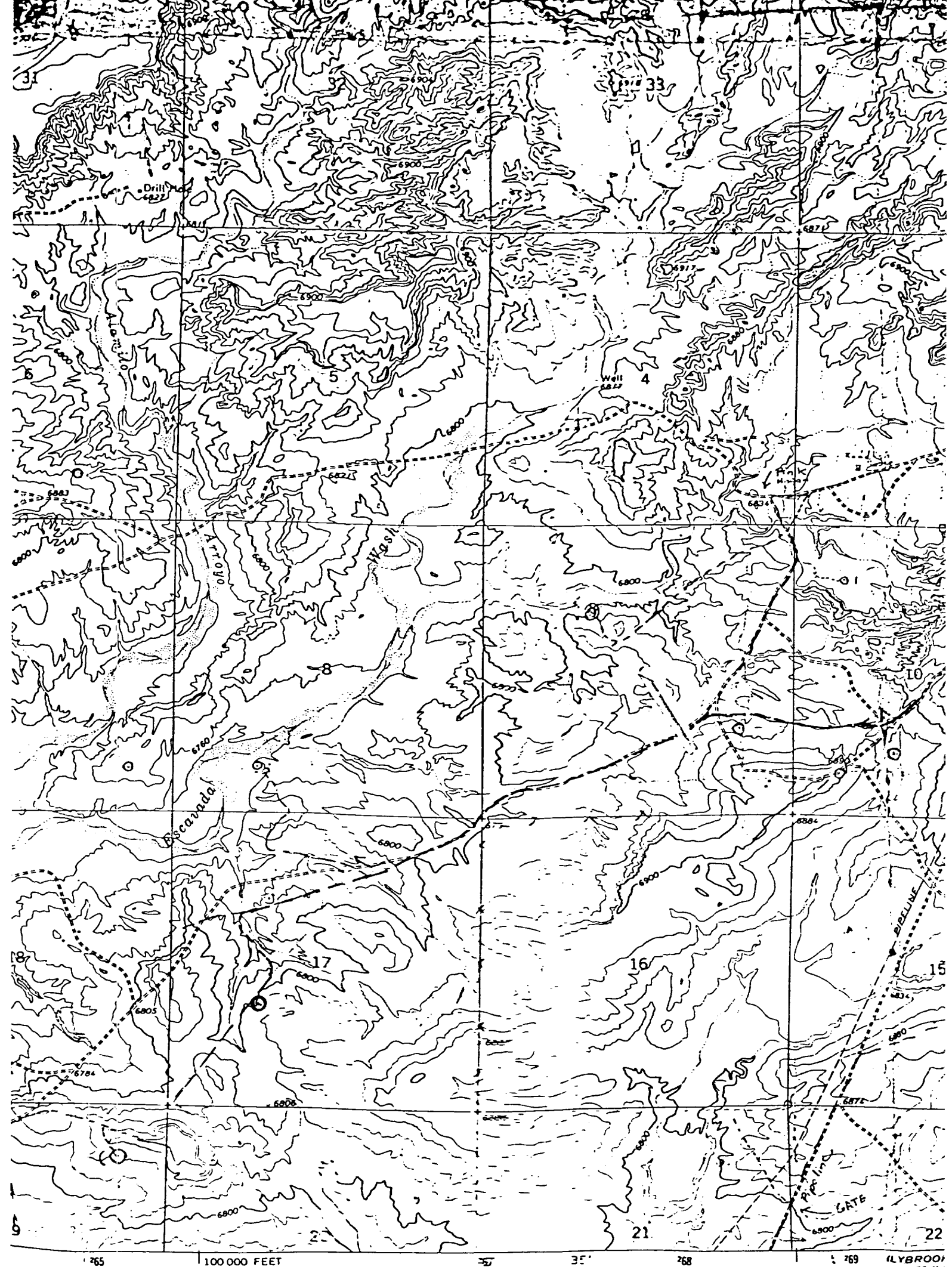


DOME PETROLEUM CORP.

SUITE 1500, COLORADO STATE BANK BLDG.

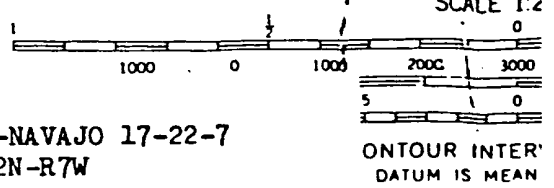
1600 BROADWAY

DENVER, COLORADO 80202



Published by the Geological Survey  
C&GS  
Metric methods from aerial  
Field checked 1966  
27 North American datum  
New Mexico coordinate system,  
Inverse Mercator grid ticks,  
Gate selected fence lines

Vicinity Map for  
DOME PETROLEUM CORP. #2 DOME-NAVAJO 17-22-7  
1820'FSL 1570'FWL Sec. 17-T22N-R7W  
SANDOVAL COUNTY, NEW MEXICO



ONTOUR INTER  
DATUM IS MEAN