

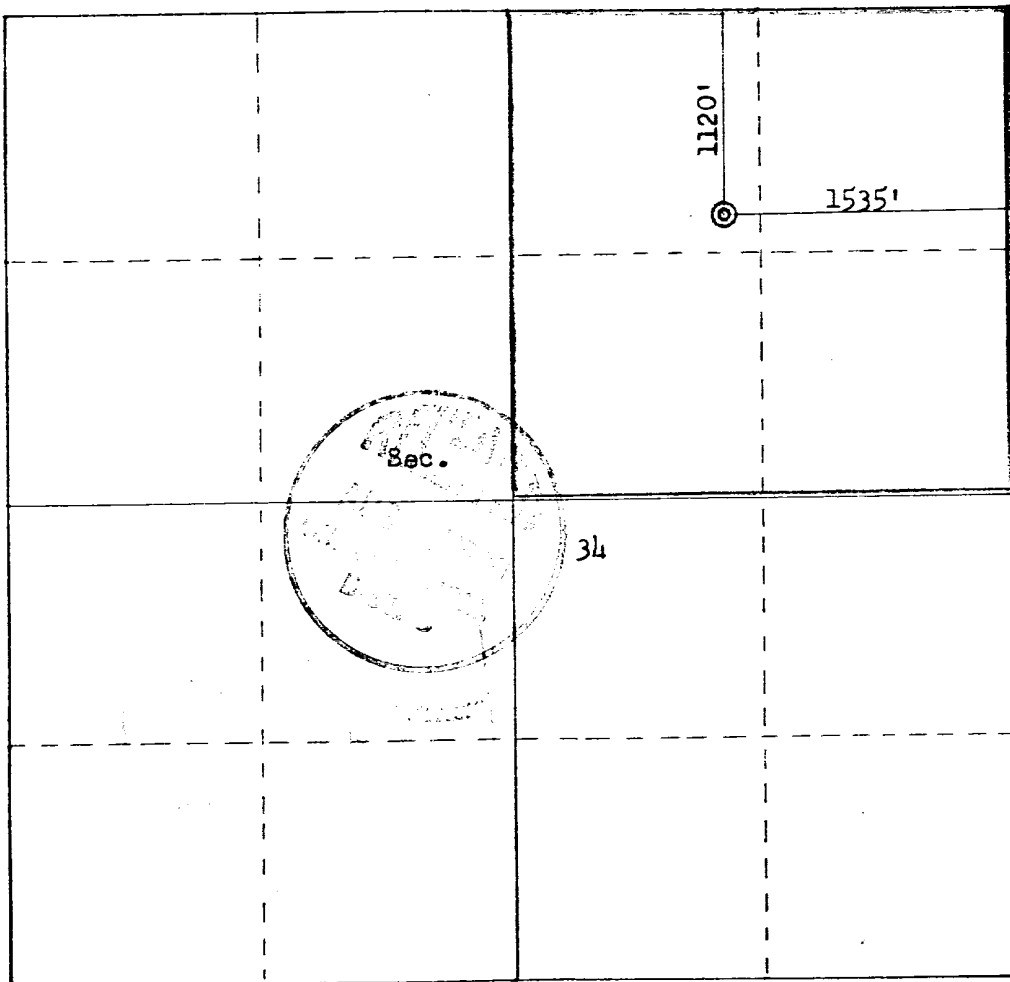
CONSERVATION DIVISION

P. O. BOX 2088

SANTA FE, NEW MEXICO 87501

All distances must be from the outer boundaries of the Section.

Operator DOME PETROLEUM CORPORATION			Lease DOME-FEDERAL 34-22-7		Well No. 1
Unit Letter B	Section 34	Township 22N	Range 7W	County Sandoval	
Actual Footage Location of Well:					
1120 feet from the North line and		1535 feet from the East line			
Ground Level Elev: 6761	Producing Formation Chacra	Pool Rusty Chacra Extension		Dedicated Acreage: 160 Acres	
<p>1. Outline the acreage dedicated to the subject well by colored pencil or hachure marks on the plat below.</p> <p>2. If more than one lease is dedicated to the well, outline each and identify the ownership thereof (both as to working interest and royalty).</p> <p>3. If more than one lease of different ownership is dedicated to the well, have the interests of all owners been consolidated by communitization, unitization, force-pooling, etc?</p> <p><input type="checkbox"/> Yes <input type="checkbox"/> No If answer is "yes," type of consolidation _____</p> <p>If answer is "no," list the owners and tract descriptions which have actually been consolidated. (Use reverse side of this form if necessary.) _____</p> <p>No allowable will be assigned to the well until all interests have been consolidated (by communitization, unitization, forced-pooling, or otherwise) or until a non-standard unit, eliminating such interests, has been approved by the Commission.</p>					



Scale: 1"=1000'

CERTIFICATION	
I hereby certify that the information contained herein is true and complete to the best of my knowledge and belief.	
<i>H. D. Hollingsworth</i>	
Name	
H. D. HOLLINGSWORTH	
Position	
Drilling & Production Foreman	
Company	
DOME PETROLEUM CORP.	
Date	
July 23, 1980	
I hereby certify that the well location shown on this plat was plotted from field notes of actual surveys made by me or under my supervision, and that the same is true and correct to the best of my knowledge and belief.	
Date Surveyed	
July 22, 1980	
Registered Professional Engineer and Land Surveyor of New Mexico	
<i>Fred B. Kerr Jr.</i>	
Certificate No. 3950	



DOME PETROLEUM CORP.

501 AIRPORT DRIVE

SUITE 107

FARMINGTON, NEW MEXICO 87401

TELEPHONE
(505) 325-2897

Development Plan For Surface Use
Dome Federal 34-22-7, #1
1120' FNL, 1535' FEL
Sandoval County, New Mexico

1. Existing Roads

The main road to the location is that from Lybrook, New Mexico toward Star Lake Road approximately 12 miles and using existing side roads to the location.

2. Planned Access Roads

The access road, to be routed as shown on the attached map, will be approximately 200' long and 18' wide with adequate ditch and water bars.

3. Location Of Existing Wells

Existing wells within one mile of location are shown on the attached topographic map.

4. Location Of Proposed Facilities

Development of commercial production will require separation facilities on the location pad. Equipment and pits will be fenced as required for protection of livestock and wildlife. Above ground facilities will be painted brown or grey to blend in with the surrounding area as specified by the BLM. The disturbed areas no longer needed for operations after well completion will be restored to natural contour and reseeded.

5. Location & Type Of Water Supply

To be hauled from Chapman Ranch 15 miles to the North.

6. Source Of Construction Materials

Not applicable.

7. Method Of Handling Waste Material

All garbage and trash that can be burned shall be burned. All trash that cannot be burned will be contained in a trash pit and covered with a minimum of 24 inches of dirt. All drilling waste such as cuttings, overflows of oil, water, and drilling fluids will be contained in the reserve pit and buried with adequate cover upon completion of operations. The reserve pit will be fenced until cleanup operations are commenced. Toilet facilities will be provided.

8. Ancillary Facilities

No camps or airstrips are proposed for this location.

9. Well Site Layout

See attached diagram.

10. Plans For Restoration Of Surface

Cleanup of the location will commence immediately following the removal of the drilling equipment. The reserve pit will be fenced until restoration operations are commenced. The location will be returned to original contour if the well is not productive. Both the road and location will be reseeded in accordance with BLM specifications.

11. Other Information

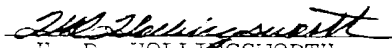
This location is on sparsely vegetated sandy land. Vegetation consists principally of sagebrush and native grasses. There is no water source in the immediate area.

12. Lessee's Or Operator's Representative

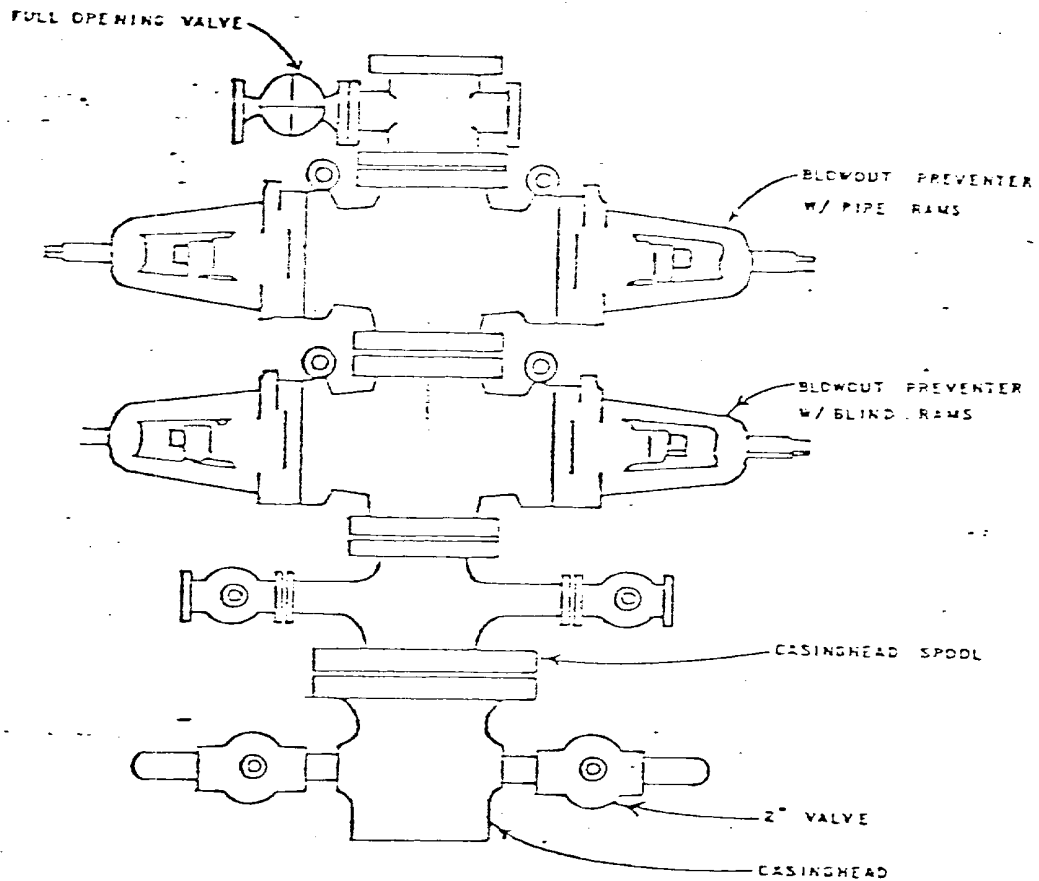
Dome Petroleum Corporation
H. D. Hollingsworth
501 Airport Drive, Suite 114
Farmington, New Mexico 87401
Phone: 505-325-2897 Office
505-327-1548 Home

13. Certification

I hereby certify that I, or persons under my direct supervision, have inspected the proposed drill site and access route; that I am familiar with the conditions which presently exist; that the statements made in this plan are, to the best of my knowledge, true and correct; and that the work associated with the operations proposed herein will be performed by Dome Petroleum Corp. and it's contractors and subcontractors in conformity with this plan and the terms and conditions under which it is approved.


H. D. HOLLINGSWORTH
Drilling & Production Foreman
Dome Petroleum Corporation

HDE:ig
July 23, 1980



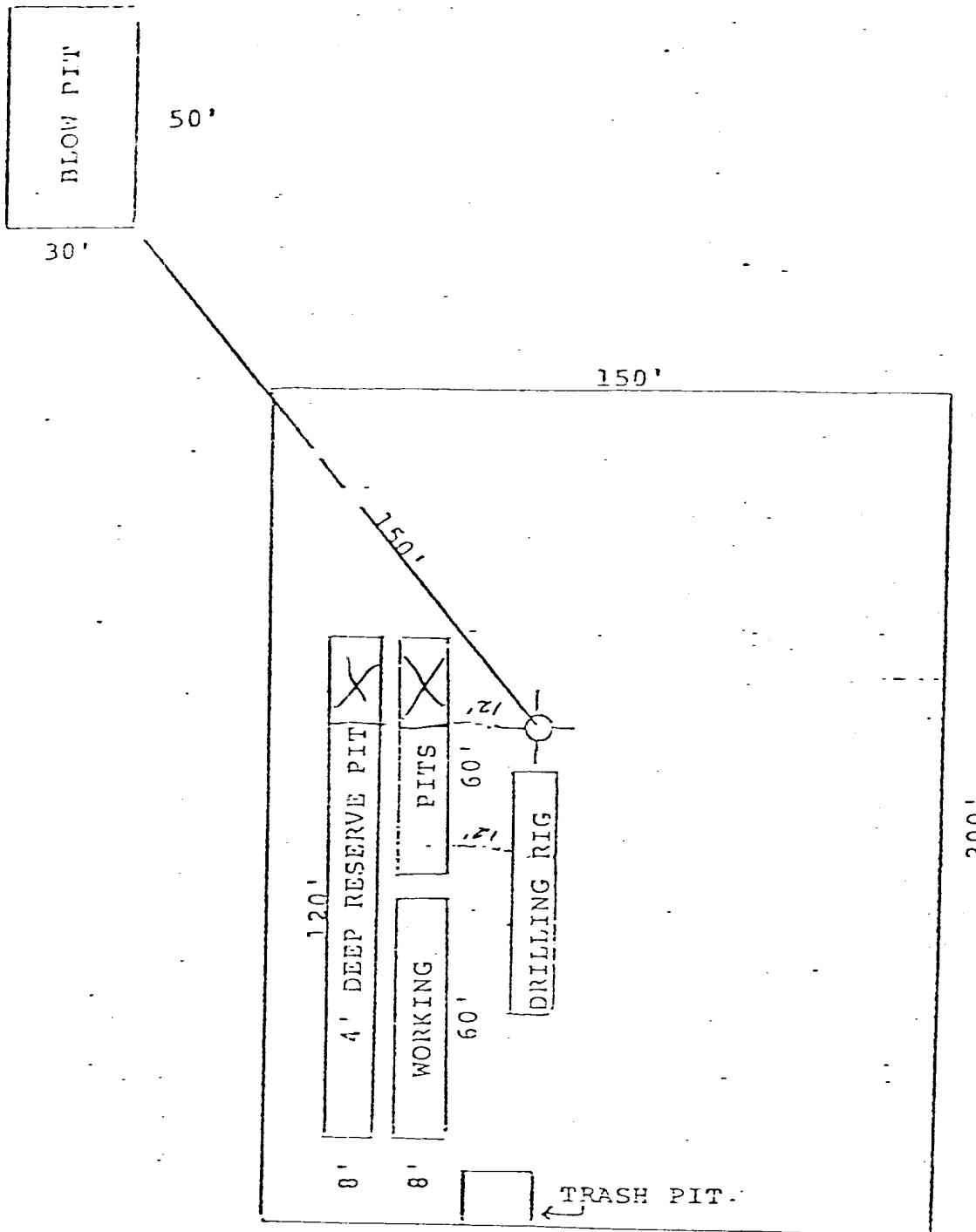
DOME PETROLEUM CORP.

SUITE 1500, COLORADO STATE BANK BLDG.

1600 BROADWAY

DENVER, COLORADO 80202

STANDARD BLOWOUT PREVENTER ASSEMBLY
16" 900 SERIES

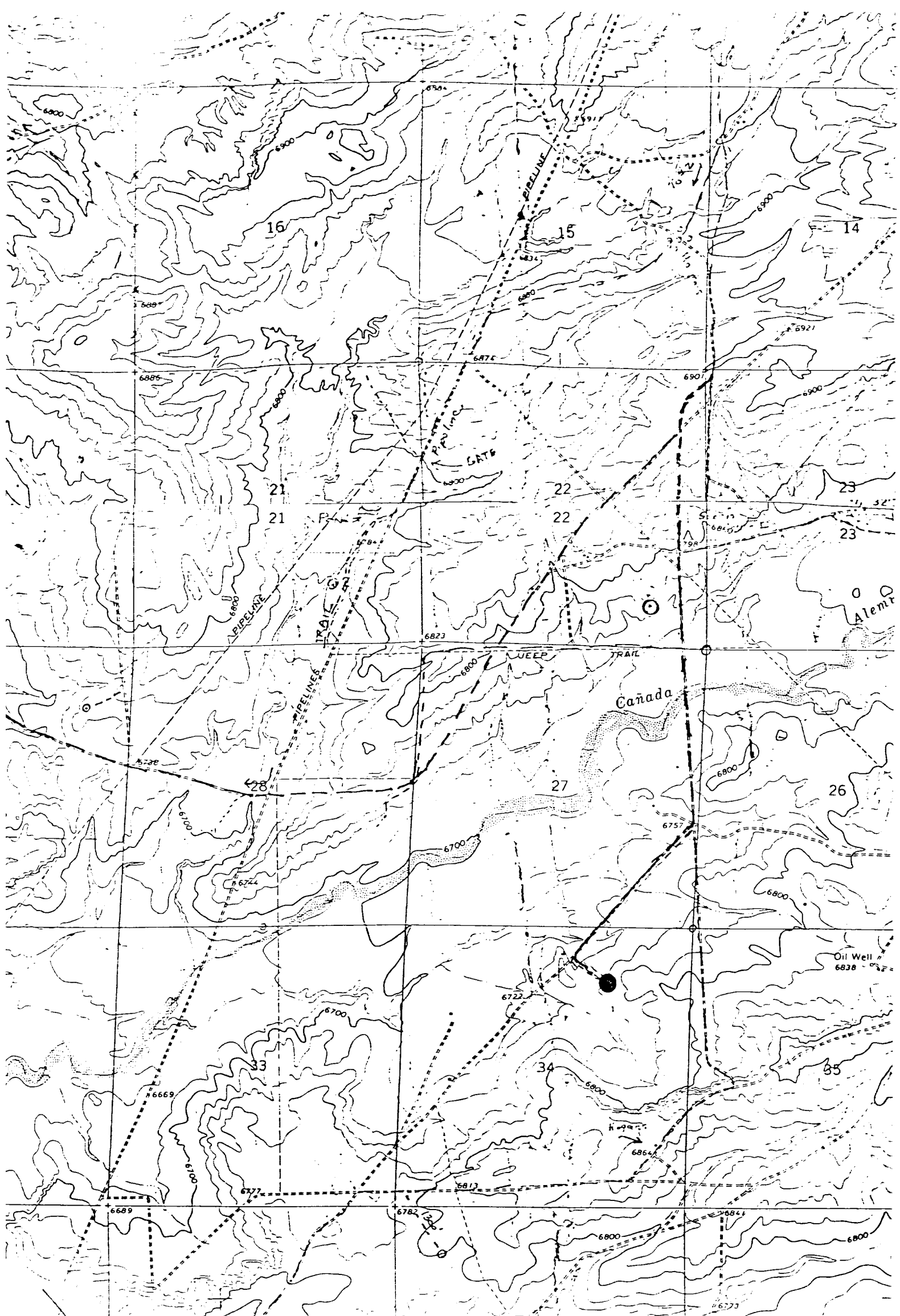


DOME PETROLEUM CORP.

SUITE 1500, COLORADO STATE BANK BLDG.

1600 BROADWAY

DENVER, COLORADO 80202



Vicinity Map for
DOME PETROLEUM CORP. #1 DOME-FEDERAL 34-22-7
1120'FNL 1535'FEL Sec. 34-T22N-R7W
SANDOVAL COUNTY, NEW MEXICO