

UNITED STATES
DEPARTMENT OF THE INTERIOR
GEOLOGICAL SURVEY

APPLICATION FOR PERMIT TO DRILL, DEEPEN, OR PLUG BACK

1a. TYPE OF WORK

DRILL ☒

DEEPEN ☐

PLUG BACK ☐

b. TYPE OF WELL

OIL
WELL ☐

GAS
WELL ☒

OTHER

SINGLE
ZONE ☐

MULTIPLE
ZONE ☐

2. NAME OF OPERATOR

Dietrich Exploration Company, Inc.

3. ADDRESS OF OPERATOR

410 17th Street - Suite 2450, Denver, Colorado 80202

4. LOCATION OF WELL (Report location clearly and in accordance with any State requirements.)*

At surface
F 1650' from West line and 1650' from North line

At proposed prod. zone

14. DISTANCE IN MILES AND DIRECTION FROM NEAREST TOWN OR POST OFFICE*

1 mile southeast of Counselors

15. DISTANCE FROM PROPOSED*

LOCATION TO NEAREST
PROPERTY OR LEASE LINE, FT.
(Also to nearest drlg. unit line, if any)

1650'

16. NO. OF ACRES IN LEASE

1280

17. NO. OF ACRES ASSIGNED
TO THIS WELL

160

18. DISTANCE FROM PROPOSED LOCATION*

TO NEAREST WELL, DRILLING, COMPLETED,
OR APPLIED FOR, ON THIS LEASE, FT.

None

19. PROPOSED DEPTH

6400'

20. ROTARY OR CABLE TOOLS

Rotary

21. ELEVATIONS (Show whether DF, RT, GR, etc.)

Ground 7040'

22. APPROX. DATE WORK WILL START*

23. GENERAL REQUIREMENTS

PROPOSED CASING AND CEMENTING PROGRAM

SIZE OF HOLE	SIZE OF CASING	WEIGHT PER FOOT	SETTING DEPTH	QUANTITY OF CEMENT
12 1/4"	8 5/8"	24#	250'	200 sks class B
7 7/8"	4 1/2"	10.5#	6400'	700 sks Halliburton Light

Drill 12 1/4" hole to 250'. Set 8 5/8" 24# casing and cement with 200 sks class B cement with 2% calcium chloride. Hook up blow out preventer. Minimum BOP shown on attached sketch. Drill 7 7/8" hole to 6400'. Run electric logs. Set 4 1/2" 10.5# casing and cement with 700 sks cement. Cement to cover Mesa Verde formation. Perforate, acidize, fracture treat and place on production. No abnormal temperatures, pressures, or hazardous gases are expected.

Estimated tops of geologic markers:

Ojo Alamo - 1530'
Fruitland - 1700'
Pictured Cliff - 1840'
Chacra - 2265'
Pt. Lookout - 4100'

Mancos - 4280'
Gallup - 5180'
Graneros - 6170'
Dakota - 6210'

RECEIVED

SEP 12 1980

U. S. GEOLOGICAL SURVEY
FARMINGTON, N. M.

IN ABOVE SPACE DESCRIBE PROPOSED PROGRAM: If proposal is to deepen or plug back, give data on present productive zone and proposed new productive zone. If proposal is to drill or deepen directionally, give pertinent data on subsurface locations and measured and true vertical depths. Give blowout preventer program, if any.

24.

SIGNED

TITLE Agent

(This space for Federal or State office use)

PERMIT NO.

APPROVAL DATE

APPROVED BY

TITLE

DATE

CONDITIONS OF APPROVAL IF ANY

7441-104 for sub

NMOC

Dear Joan & Red, Halsh

Jack & I want to let you know
you for a lovely evening.
~~how much we enjoyed ourselves the~~
~~other night.~~ The drinks were good, the
food great & the company excellent.
It was fun meeting Jack & I hope I am
enjoyed seeing Joe & David. Thank you
so much for including us.
Laurie

OIL CONSERVATION DIVISION

P. O. BOX 2088

SANTA FE, NEW MEXICO 87501

Form C-107
Revised 10-1-7

STATE OF NEW MEXICO

OIL AND MINERALS DEPARTMENT

All distances must be from the outer boundaries of the Section.

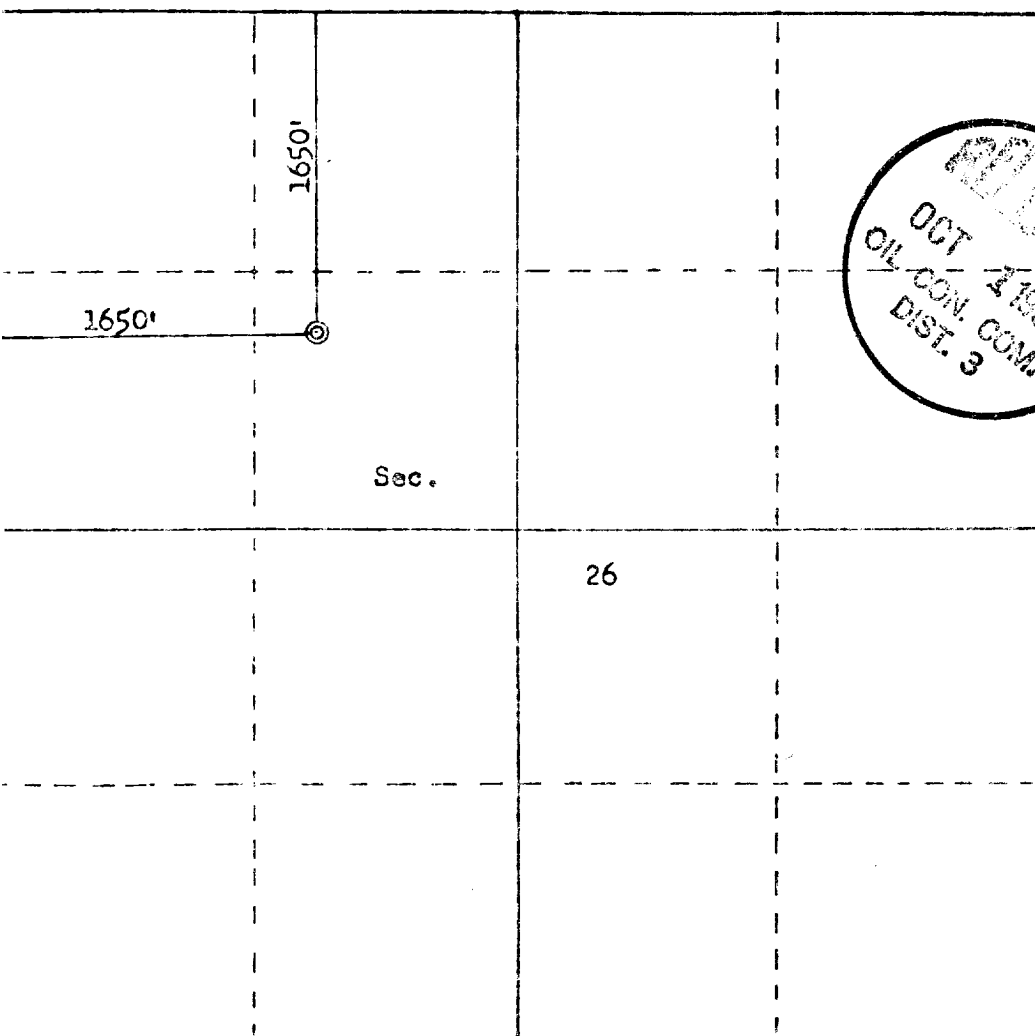
Operator DIETRICH EXPLORATION COMPANY, INC.		Lease FEDERAL		Well No. 22
Unit Letter F	Section 26	Township 23N	Range 6W	County Sandoval
Actual Footage Location of Well:				
1650 feet from the North line and		1650 feet from the West line		
Ground Level Elev. 7040	Producing Formation Dakota	Pool Wildcat	Dedicated Acreage: X 160 Acres	

- X 1. Outline the acreage dedicated to the subject well by colored pencil or hatchure marks on the plat below.
2. If more than one lease is dedicated to the well, outline each and identify the ownership thereof (both as to working interest and royalty).
3. If more than one lease of different ownership is dedicated to the well, have the interests of all owners been consolidated by communitization, unitization, force-pooling, etc?

☐ Yes ☐ No If answer is "yes," type of consolidation _____

If answer is "no," list the owners and tract descriptions which have actually been consolidated. (Use reverse side of this form if necessary.) _____

No allowable will be assigned to the well until all interests have been consolidated (by communitization, unitization, forced-pooling, or otherwise) or until a non-standard unit, eliminating such interests, has been approved by the Commission.



Scale: 1"=1000'

OK
C.G.

CERTIFICATION

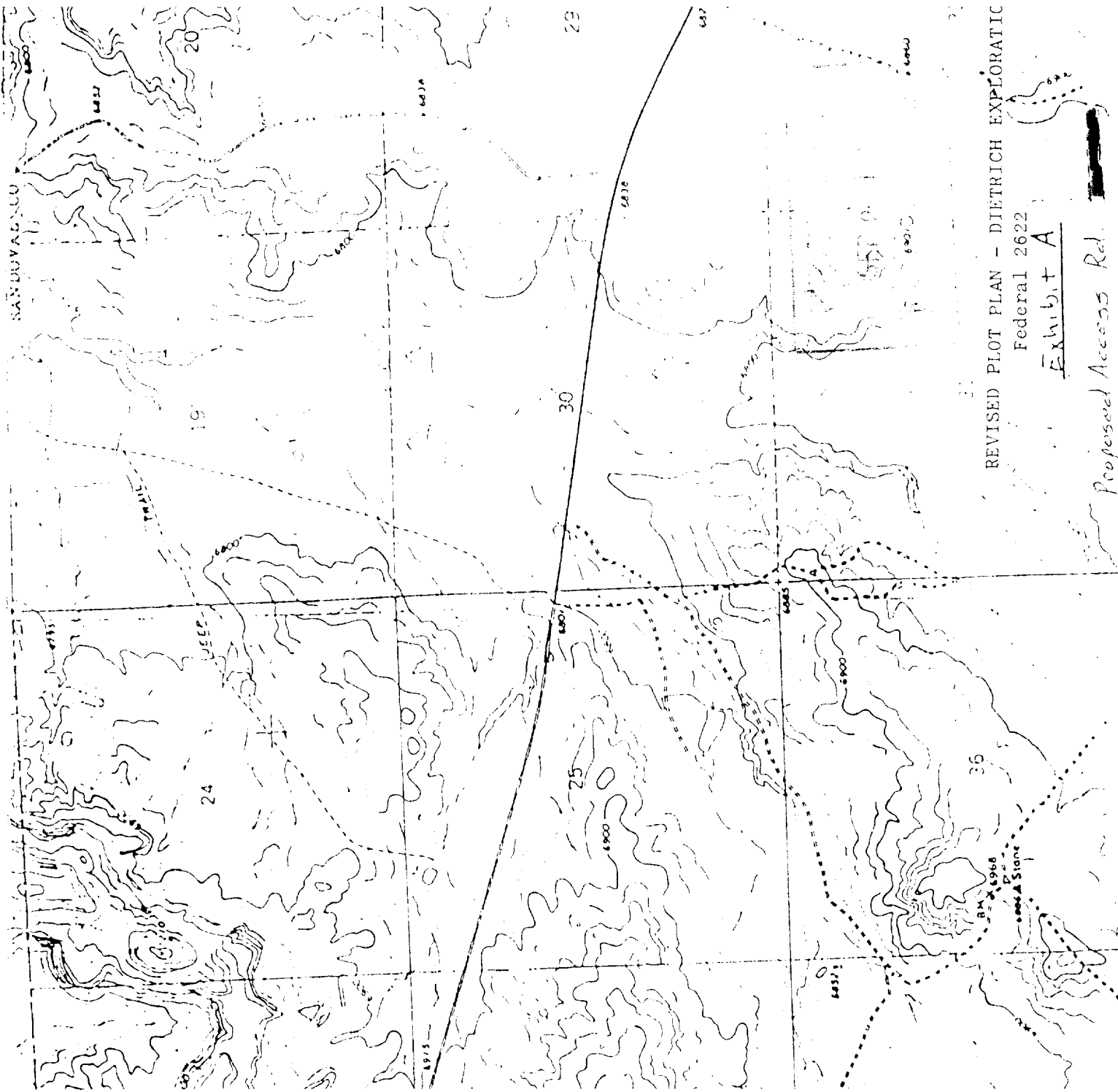
I hereby certify that the information contained herein is true and complete to the best of my knowledge and belief.

Name **Mike Hicks**
Position **Agent**
Company **Dietrich Exploration**

Date **Sept. 10, 1980**

I hereby certify that the well location shown on this plat was plotted from field notes of actual surveys made by me or under my supervision, and that the same is true and correct to the best of my knowledge and belief.

Date Surveyed **AUG 26 1980**
Registered Professional Engineer and Land Surveyor
Frederick B. Ketchum
Certificate No. **2232**



REVISED PLOT PLAN - DIETRICH EXPLORATIC
Federal 2622
Exhibit A
Proposed Access Rd.