

UNITED STATES
DEPARTMENT OF THE INTERIOR
GEOLOGICAL SURVEY

SUBMIT IN TRIPLICATE*
(Other instructions on reverse side)

Form approved
Budget Bureau No. 42-111

APPLICATION FOR PERMIT TO DRILL, DEEPEN, OR PLUG BACK

1a. TYPE OF WORK

DRILL ☒

DEEPEN ☐

PLUG BACK ☐

b. TYPE OF WELL

OIL WELL ☒

GAS WELL ☐

OTHER

SINGLE ZONE ☐

MULTIPLE ZONE ☐

2. NAME OF OPERATOR

Black Oil - *Marlebru*

3. ADDRESS OF OPERATOR

P. O. Box 537 - Farmington, New Mexico 87401

4. LOCATION OF WELL (Report location clearly and in accordance with any State requirements.)
At surface 990' FNL and 990' FEL

At proposed prod. zone
Same

14. DISTANCE IN MILES AND DIRECTION FROM NEAREST TOWN OR POST OFFICE*

2 miles west of Torreon Trading Post, N. Mexico

15. DISTANCE FROM PROPOSED* LOCATION TO NEAREST PROPERTY OR LEASE LINE, FT. (Also to nearest drilg. unit line, if any)

1980'

16. NO. OF ACRES IN LEASE

1270.44

17. NO. OF ACRES ASSIGNED TO THIS WELL

40

18. DISTANCE FROM PROPOSED LOCATION* TO NEAREST WELL, DRILLING, COMPLETED, OR APPLIED FOR, ON THIS LEASE, FT.

1025'

19. PROPOSED DEPTH

1700'

20. ROTARY OR CABLE TOOLS

Rotary

21. ELEVATIONS (Show whether DF, RT, GR, etc.)

6725' GR

22. APPROX. DATE WORK WILL START*

November 15, 1980

PROPOSED CASING AND CEMENTING PROGRAM

SIZE OF HOLE	SIZE OF CASING	WEIGHT PER FOOT	SETTING DEPTH	QUANTITY OF CEMENT
10"	3 5/8"	24 #	60'	
6 3/4"	4 1/2" (if needed)	10.5 #	1700'	sufficient to circulate
				80 SX

This well will be spud in Quaternary terrace gravels and will be drilled with mud to total depth in the Cretaceous Point Lookout Formation after setting and cementing 8-5/8" surface casing. We will run electric logs at total depth and set 4 1/2" casing for production if warranted. Well will be cored if oil sands are encountered. We estimate the following formation tops:
Cretaceous Menefee Formation - Surface
Cretaceous Point Lookout Formation - 1700'

DRILLING OPERATIONS AUTHORIZED ARE
SUBJECT TO COMPLIANCE WITH ATTACHED
"GENERAL REQUIREMENTS"

Eastland Oil Petco No. 1 Federal was drilled 1100' of the proposed location and to the same depth. It encountered no abnormal temperatures or pressures. No other potential hazards are anticipated. Pressure control equipment will include 60 feet of 8 1/2" 24.00# surface casing cemented to surface. We do not plan on using a preventer unless required. Bottom hole pressure is anticipated to be 800 PSI or less. Mud program will call for 9.2 lb/gal mud with hydrostatic head of 750 PSI at 1500 feet. Mud weight will be increased if necessary for higher pressures. Mud will be low solids low water loss. The well will be mud-logged from

(OVER PLEASE)

IN ABOVE SPACE DESCRIBE PROPOSED PROGRAM: If proposal is to deepen or plug back, give data on present productive zone and proposed new productive zone. If proposal is to drill or deepen directionally, give pertinent data on subsurface locations and measured and true vertical depths. Give blowout preventer program, if any.

SIGNED

(This space for Federal or State office use)

TITLE

DATE

PERMIT NO.

APPROVAL DATE

APPROVED BY

CONDITIONS OF APPROVAL, IF ANY

TITLE

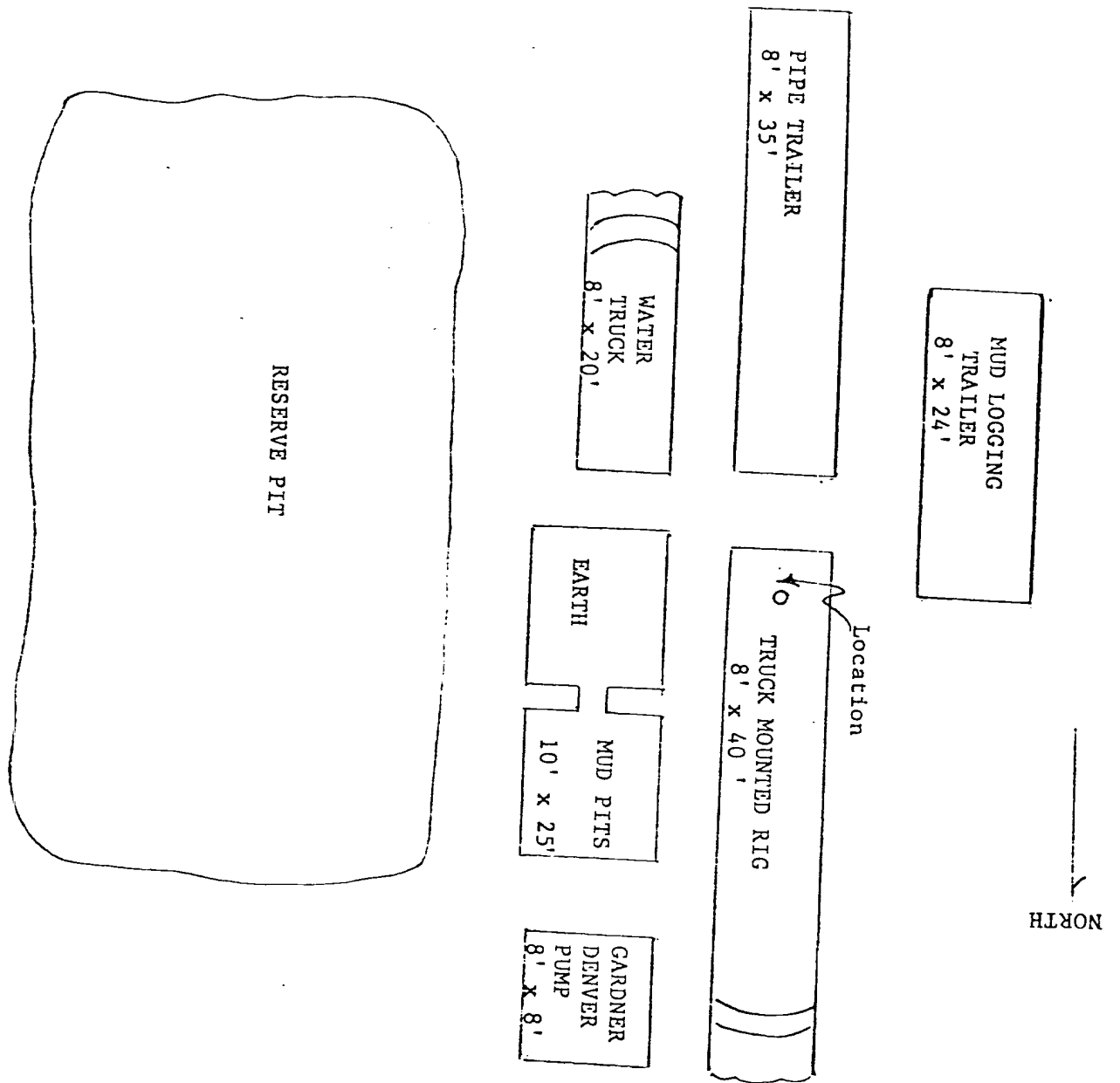
DATE

*See Instructions On Reverse Side



Location Layout:

Black Oil and Colorado Plateau Geological Services
MARLBORU FEDERAL NO. 1
Section 19, T. 18 N., R. 4 W.
Sandoval County, New Mexico



All distances must be from the outer boundaries of the Section.

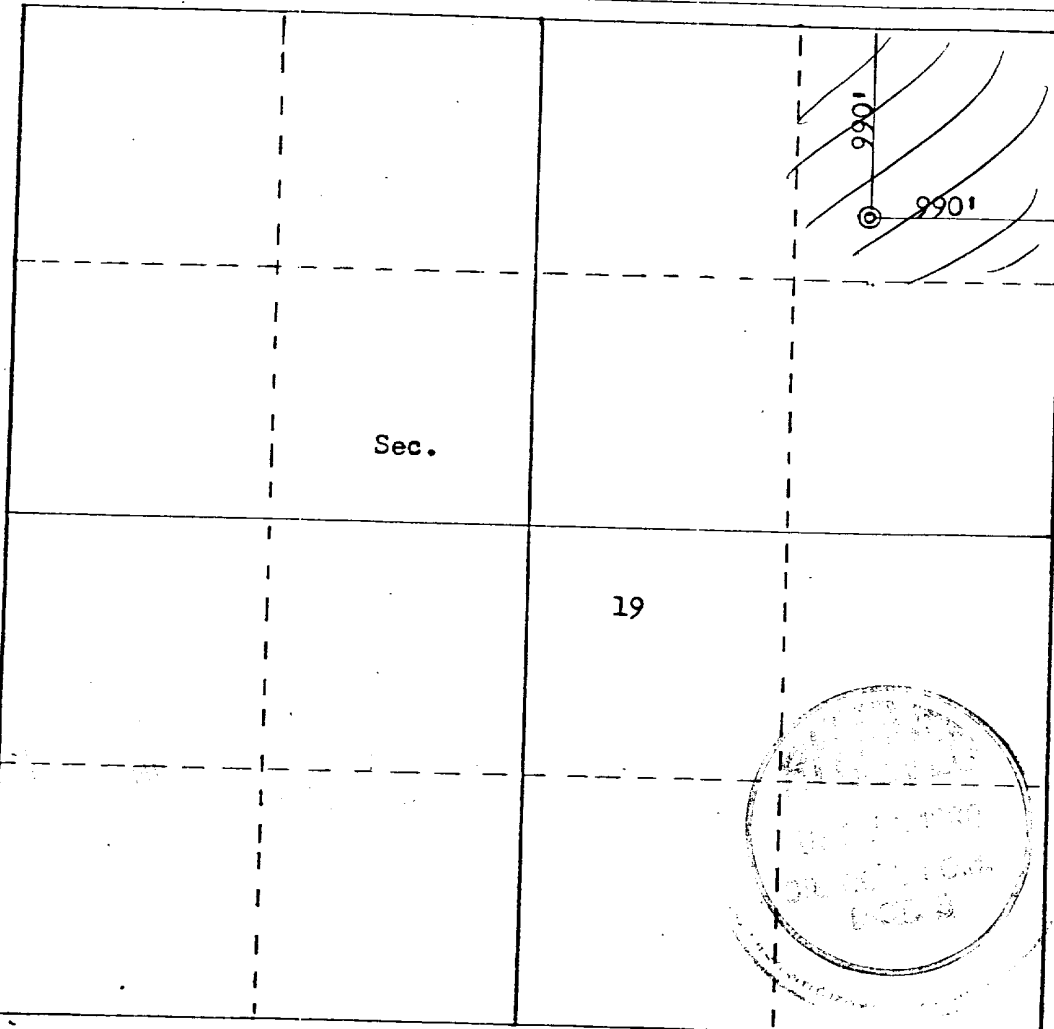
Operator BLACK OIL-COLORADO PLATEAU GEOL. SERVICES		Lease MARLEPRU-FEDERAL		Well No. 1
Unit Letter A	Section 19	Township 18N	Range 4W	County Sandoval
Actual Footage Location of Well:				
990 feet from the North line and		990 feet from the East line		
Ground Level Elev. 6724	Producing Formation M.V.	Pool W.C.	Dedicated Acreage: 40 Acres	

1. Outline the acreage dedicated to the subject well by colored pencil or hatchure marks on the plat below.
2. If more than one lease is dedicated to the well, outline each and identify the ownership thereof (both as to working interest and royalty).
3. If more than one lease of different ownership is dedicated to the well, have the interests of all owners been consolidated by communitization, unitization, force-pooling, etc?

☐ Yes ☐ No If answer is "yes," type of consolidation _____

If answer is "no," list the owners and tract descriptions which have actually been consolidated. (Use reverse side of this form if necessary.) _____

No allowable will be assigned to the well until all interests have been consolidated (by communitization, unitization, forced-pooling, or otherwise) or until a non-standard unit, eliminating such interests, has been approved by the Commission.



Scale: 1"=1000'

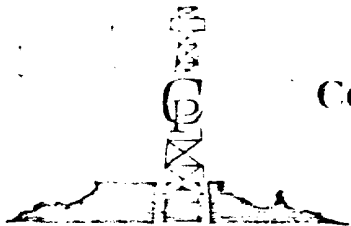
CERTIFICATION

I hereby certify that the information contained herein is true and complete to the best of my knowledge and belief.

Name *Fred B. Kern*
Position *Surveyor*
Company *Carl M. Kern Const. Serv.*
Date *Oct 15-26 1952*

I hereby certify that the well location shown on this plat was plotted from field notes of actual surveys made by me or under my supervision, and that the same is true and correct to the best of my knowledge and belief.

Date Surveyed **OCTOBER 15, 1952**
Registered Professional Engineer and Land Surveyor
Fred B. Kern Jr.
Certificate No. **3950**



COLORADO PLATEAU GEOLOGICAL SERVICES, INC.

P. O. Box 537

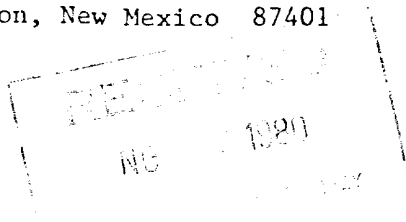
FARMINGTON, NEW MEXICO 87401

(505) 325-9671

October 14, 1980

☆ Surface & Sub-Surface Studies
☆ Well Site Supervision
☆ Exploration Program Planning & Supervision
☆ Property Development and Management

United States Department of Interior
Geological Survey - Farmington District
P. O. Box 959
Farmington, New Mexico 87401



RE: Multi-point surface use & operations plan
for Black Oil - CPGS Inc.
Marlebru Federal No. 1
NE $\frac{1}{4}$ of NE $\frac{1}{4}$, Section 19, T. 18 N., R. 4 W.,
Sandoval County, New Mexico

Gentlemen:

In compliance with governmental requirements, I hereby respectfully submit the following environmental surface use and operating plan data to accompany the application for permit to drill the above referenced test well.

1. Existing roads - Enclosure 1 is a zerox copy of a portion of the USGS 15 minute Albuquerque quadrangle topographic map on a scale 1 to 250,000 which shows the proposed wellsite in relation to Torreon and other small towns in the area. The proposed route from Hiway 44 is shown in red. Access to the location from Torreon Trading Post is by driving westerly 1 $\frac{1}{2}$ miles to Julio Juan Canyon, then northwesterly by $\frac{1}{2}$ mile of dirt road to the drill site as indicated by the attached vicinity map (Enclosure 2). All other existing roads within a three mile radius are dirt roads in fair to excellent condition.
2. Planned access roads - Existing dirt roads will be utilized to within 1/16 mile of drill-site from which point a minimum width graded access road will be prepared to drillsite. This road will be on a less than 10% grade and will terminate at the drillsite. No culverts or surfacing material will be necessary. No fences will be cut and no additional gates or cattle guards will be needed.
3. Location of tank batteries, production facilities, and production, gathering and service lines - None at present. If production is established at this well, adequate production facilities including a tank battery will be installed on location immediately southeast of the wellsite. Sumps will be fenced to prevent hazards to wild life and livestock.
4. Location of existing wells - The only existing known water well within a two mile radius is shown on Enclosure No. 2 circled in green.

5. Location and type of water supply (rivers, creeks, lakes, ponds, and wells). - Water for drilling this well will be trucked from a private water pond located in Section 22, Township 18, N., Range 4 West., via existing roads.
6. Source of construction materials. - No additional constructing materials are anticipated. If they are required they will be brought in by existing roads as set out in paragraphs 1 and 2 from Cuba, New Mexico.
7. Methods for handling waste disposal. - A reserve pit will be utilized for waste disposal. Trash will be buried four feet below the surface. Following drilling, mud pits will be fenced and allowed to dry, then filled with surface soil previously excavated. If necessary, produced oil or water will be trucked off the location.
8. Ancillary facilities - None planned at present time.
9. Wellsite layout - Wellsite layout is shown on Enclosure 3. The rig for this operation is small and no extensive cuts or fills are necessary. The location is flat and the only location construction necessary is digging of the pits, and minimum leveling of the surface. A cross section of the location is shown in Enclosure 4.
10. Plans for restoration of the surface. - If oil production is established, adequate production facilities including tank battery will be installed. The location except for wellhead site, production equipment, and necessary access road will be restored to original condition as much as possible by back-filling any cuts and leveling any fill to the original contours. (location is however essentially flat). Reseeding if necessary will be done on areas which have been disturbed. If no production is found following drilling the location will be restored by leveling to original topography and reseeding as necessary. Only the dry holmarker will remain on the original site and the access road will be abandoned and reseeded as required. No reshaping of topography or drainage systems or soil treatments are anticipated inasmuch as the location is on a flat terrace covered by loose, wind blown sand and scarce grass cover.
11. Other information. - The wellsite is located on a topographically flat terrace or pediment. This feature is covered by a loose thin cover of wind blown sand and thin soil. The soil is a brown sandy soil that supports a sparse vegetation of desert grasses and scattered Pinon and Juniper trees. Animal life in the area includes coyotes, rattlesnakes, and cottontail & jack rabbits. The surface is owned by the Federal Government and leased for grazing. No steep hillsides, gullies, water ponds, wells, lakes, or streams; occupied dwellings, or other facilities are in the near promimity of the location. No archeological historical or cultural sites are in the immediate vicinity.

12. Lessees' or operators' representatives - The operators field representative will be Mr. Bruce A. Black. He can be reached at P. O. Box 537, Farmington, New Mexico - Phone 325-9671 or 325-7855.

13. Certification:

I hereby certify that I, or persons under my direct supervision, have inspected the proposed drillsite and access route; that I am familiar with the conditions which presently exist; that the statement made in this plan are, to the best of my knowledge, true and correct; and that the work associated with the operations proposed herein will be performed by Black Oil and Colorado Plateau Geological Services and its contractors and subcontractors in conformity with this plan and the terms and conditions under which it is approved.

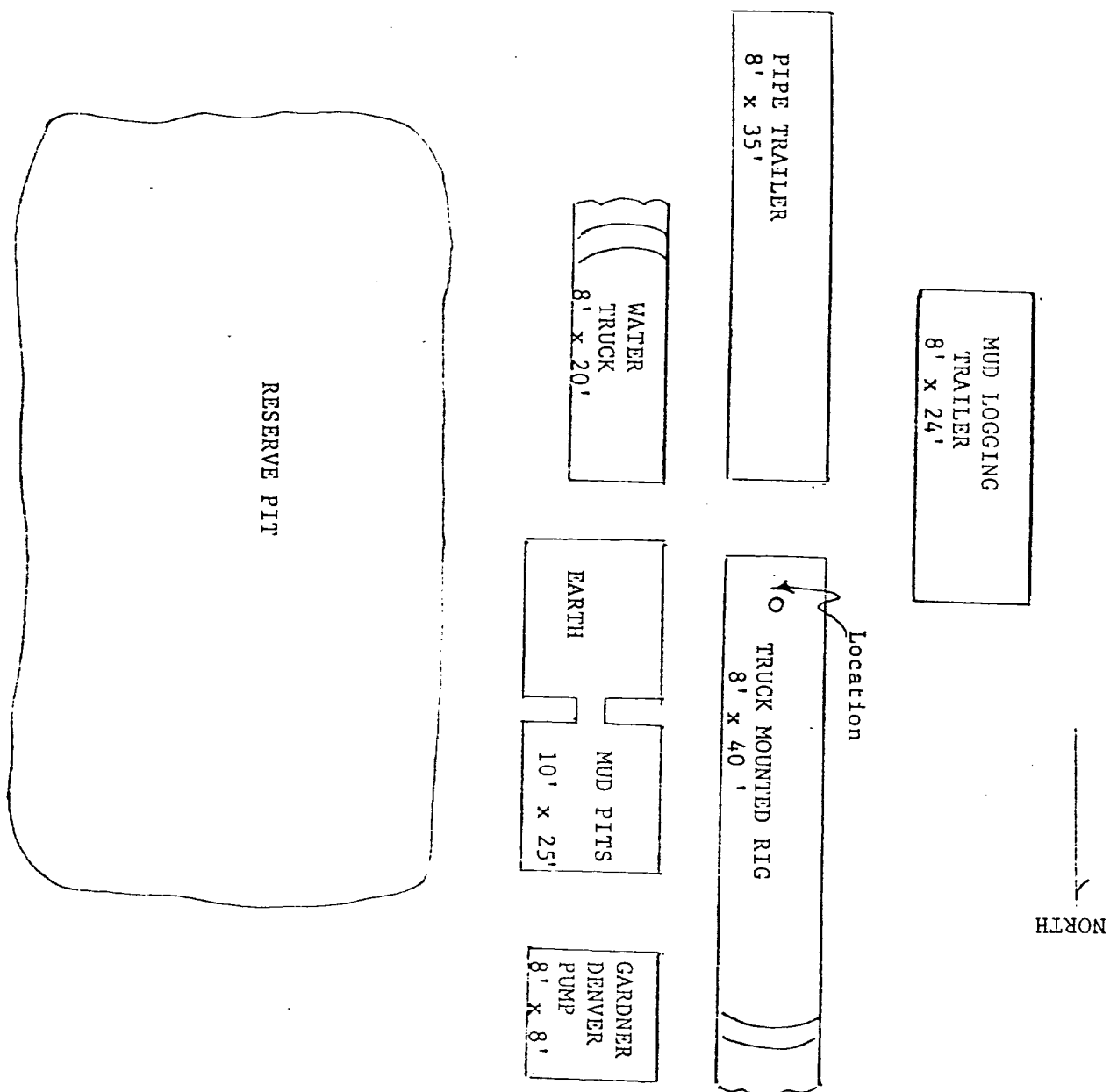
11/14/78
(Date)

Sam C. Black Pres
(Name and Title)

(Date)

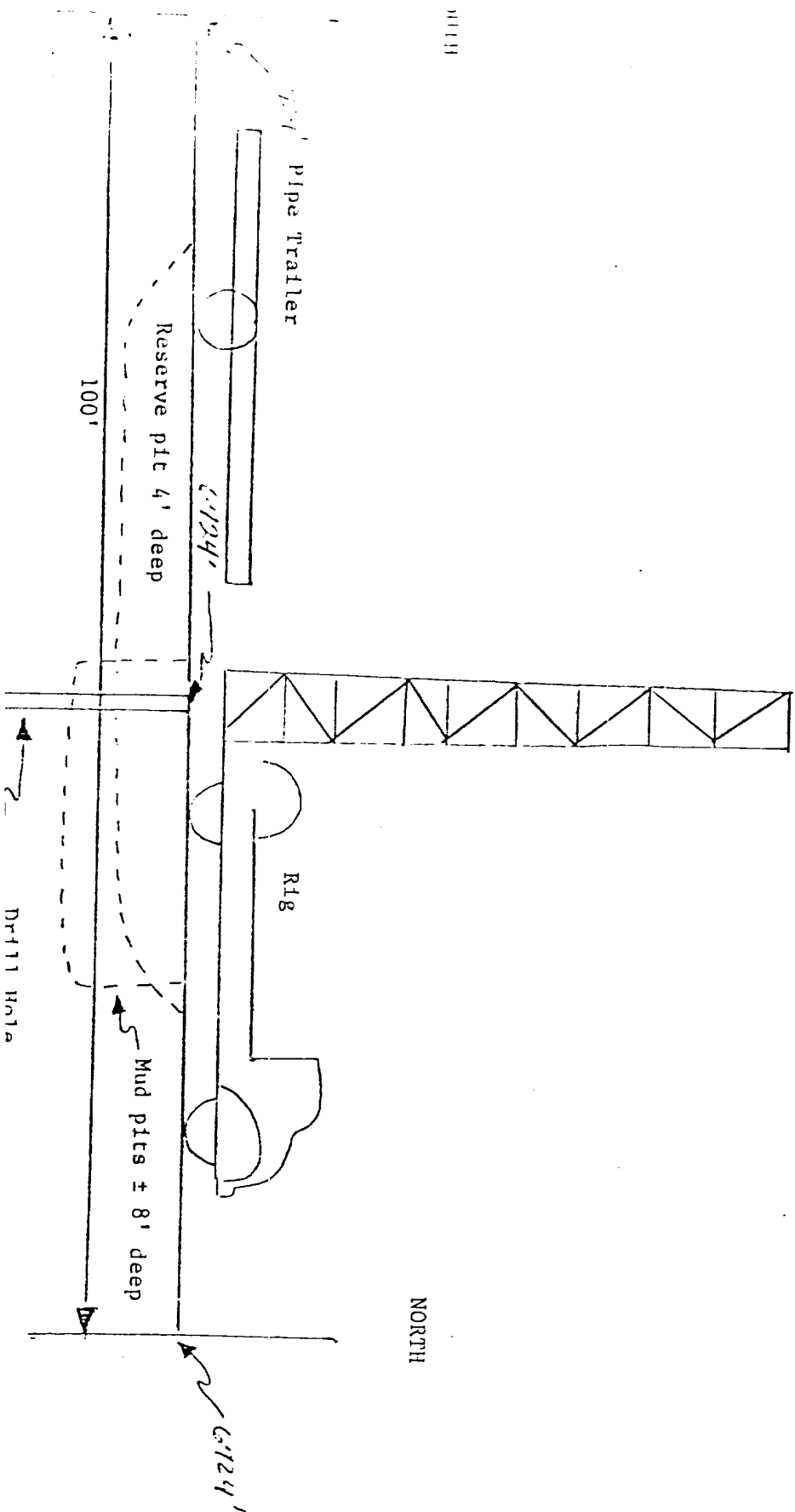
(Name & Title)

Location Layout:
 Black Oil and Colorado Plateau Geological Services
 MARLBORU FEDERAL NO. 1
 Section 19, T. 18 N., R. 4 W.
 Sandoval County, New Mexico



CROSS SECTION

Black Oil and Colorado Plateau Geological Services
MARLEBRU FEDERAL NO. 1
Section 19, T. 18 N., R. 4 W.,
Sandoval County, New Mexico



ALBUQUERQUE



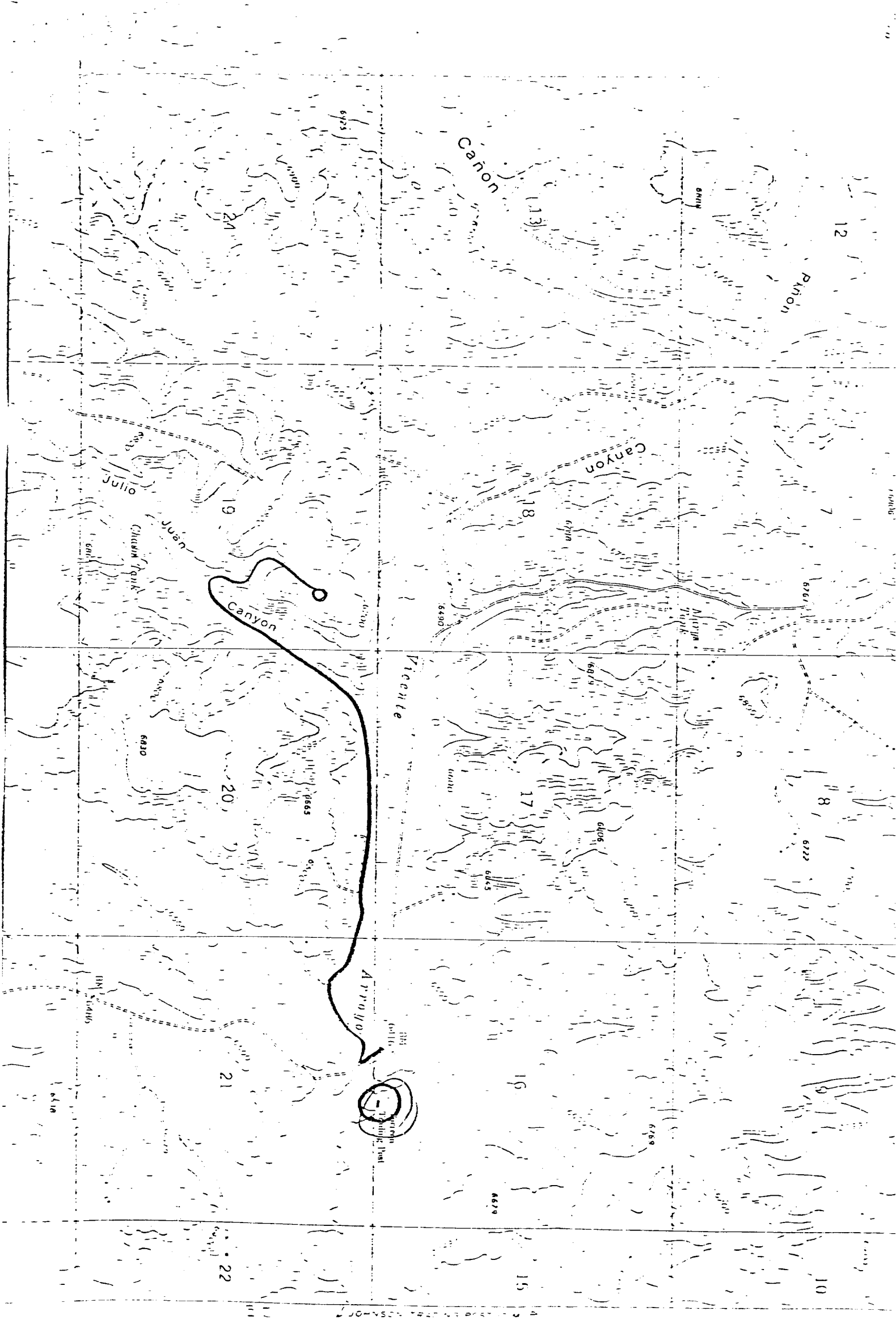


Vicinity Map for
 BLACK OIL-COLORADO PLATEAU GEOLOGICAL SERVICES #1 MARLEBRU-FEDERAL
 990'FNL 990'FEL Sec. 19-T18N-R4W
 SANDOVAL COUNTY, NEW MEXICO

THE HEIGHTS TO FOOT CONTOURS
 DATUM IS MEAN SEA LEVEL

Encl. 2

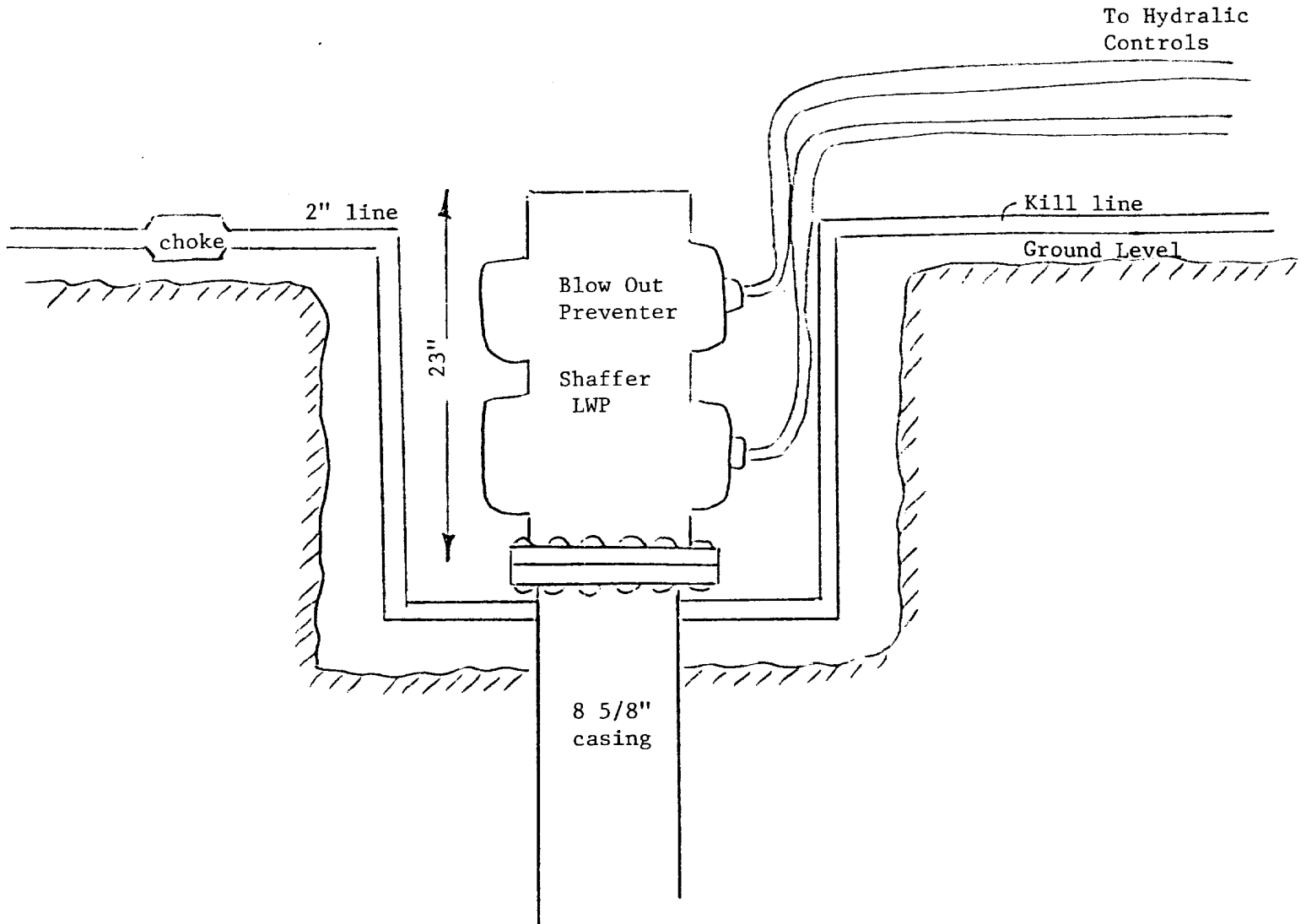




SCHEMATIC DIAGRAM OF PRESSURE CONTROL EQUIPMENT

BLACK OIL - CPGS

Marlebru Federal No. 2
Sec. 19, T.18N, R.4W



Blowout preventer will be a Shaffer LWP hydraulic with a 7-1/16" bore. Blowout preventer will be attached to casing with a 8 5/8" flange. The BOP will be coupled with a hydraulic closing unit and will be 23" from the top of the flange to the top of the B.O.P. Blowout prevention equipment will be in compliance with stipulation 5 of the general requirements for oil and gas operations on Federal Indian leases.