

UNITED STATES
DEPARTMENT OF THE INTERIOR
GEOLOGICAL SURVEY

APPLICATION FOR PERMIT TO DRILL, DEEPEN, OR PLUG BACK

1a. TYPE OF WORK

DRILL ☒DEEPEN ☐PLUG BACK ☐

b. TYPE OF WELL

OIL
WELL ☒GAS
WELL ☐OTHER ☐SINGLE
ZONE ☒MULTIPLE
ZONE ☐

2. NAME OF OPERATOR

Ruth Ross

3. ADDRESS OF OPERATOR

P. O. Box 464 Santa Fe NM 87501

4. LOCATION OF WELL (Report location clearly and in accordance with any State requirements.*)

At surface

330 TWL 1650 FW

At proposed prod. zone

14. DISTANCE IN MILES AND DIRECTION FROM NEAREST TOWN OR POST OFFICE*

About 7 miles SW of Torreon Trading Post

15. DISTANCE FROM PROPOSED*

LOCATION TO NEAREST
PROPERTY OR LEASE LINE, FT.
(Also to nearest drlg. unit line, if any)

330'

16. NO. OF ACRES IN LEASE

160

17. NO. OF ACRES ASSIGNED
TO THIS WELL

40

18. DISTANCE FROM PROPOSED LOCATION*

TO NEAREST WELL, DRILLING, COMPLETED,
OR APPLIED FOR, ON THIS LEASE, FT.

330'

19. PROPOSED DEPTH

350'

20. ROTARY OR CABLE TOOLS

Combination air & Cable tls.

21. ELEVATIONS (Show whether DF, RT, GR, etc.)

6430 GR

22. APPROX. DATE WORK WILL START*

January 1981

23. OPERATIONS AUTHORIZED ARE

23. OPERATIONS AUTHORIZED ARE

PROPOSED CASING AND CEMENTING PROGRAM

SIZE OF HOLE	SIZE OF CASING	WEIGHT PER FOOT	SETTING DEPTH	QUANTITY OF CEMENT
8 inch	7 inch	18#	35'	10 SX

This action is subject to administrative
approval pursuant to 33 CFR 290.

This test will be an attempt to extend eastward the South San Luis Mesaverde Field.

The top of the pay sand should be at about 300'; the hole will start in the Mesaverde.

We plan to evaluate our pay zone prior to asking permission to case the hole, since we must determine whether we wish to use the same recovery methods as have been approved for the South San Luis Water Injection program.

During drilling, pressure control will be by full opening globe valve with oil seaver.

Logging will be done from cuttings and possibly Electric Logs.

IN ABOVE SPACE DESCRIBE PROPOSED PROGRAM: If proposal is to deepen or plug back, give data on present productive zone and proposed new productive zone. If proposal is to drill or deepen directionally, give pertinent data on subsurface locations and measured and true vertical depths. Give blowout preventer program, if any.

24.

SIGNED

Hyman P. Chase

TITLE

Agent

DATE

12/5/80

(This space for Federal Oil Spill Prevention)

PERMIT NO.

AS AMENDED

APPROVAL DATE

APPROVED BY

James F. Sims
DEC 29 1980
JAMES F. SIMS
DISTRICT ENGINEER

TITLE

DATE

OIL CON. COM.
DIST. 3

ILLECIBLE

Instructions

General: This form is designed for submitting proposals to perform certain well operations, as indicated, on all types of lands and leases for appropriate action by either a Federal or a State agency, or both, pursuant to applicable Federal and/or State laws and regulations. Any necessary special instructions concerning the use of this form and the number of copies to be submitted, particularly with regard to local, area, or regional procedures and practices, either are shown below or will be issued by, or may be obtained from, the local Federal and/or State office.

Item 1: If the proposal is to redrill to the same reservoir at a different subsurface location or to a new reservoir, use this form with appropriate notations. Consult applicable State or Federal regulations concerning subsequent work proposals or reports on the well.

Item 4: If there are no applicable State requirements, locations on Federal or Indian land should be described in accordance with Federal requirements. Consult local State or Federal office for specific instructions.

Item 14: Needed only when location of well cannot readily be found by road from the land or lease description. A plat, or plats, separate or on this reverse side, showing the roads to, and the surveyed location of, the well, and any other required information, should be furnished when required by Federal or State agency offices.

Items 15 and 18: If well is to be, or has been directionally drilled, give distances for subsurface location of hole in any present or objective production zone.

Item 22: Consult applicable Federal or State regulations, or appropriate officials, concerning approval of the proposal before operations are started.

RECEIVED
JUL 18 1980
WATER DIVISION
DISTRICT ENGINEER
APPROVED

OIL CONSERVATION DIVISION

STATE OF NEW MEXICO
ENERGY AND MINERALS DEPARTMENTP. O. BOX 2088
SANTA FE, NEW MEXICO 87501Form C-102
Revised 10-1-78

All distances must be from the outer boundaries of the Section.

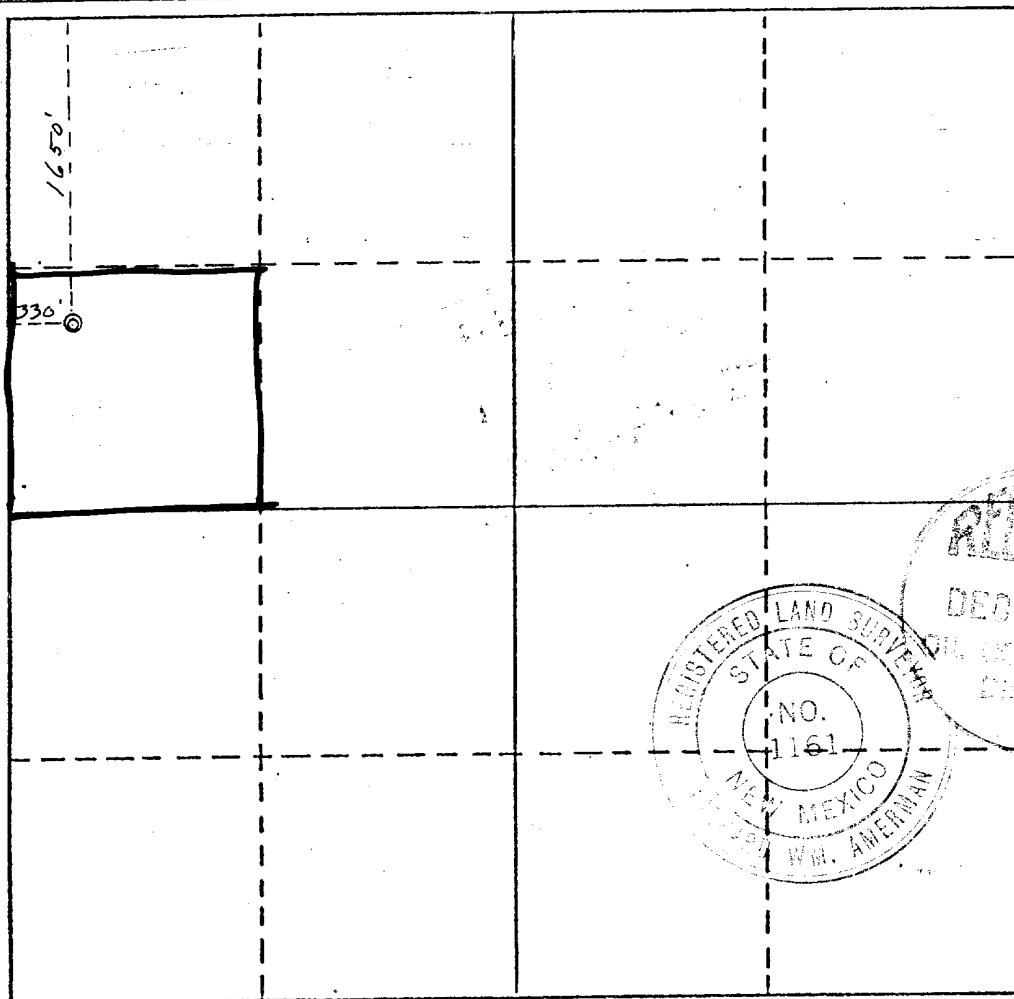
Operator <i>Ruth Ross</i>		Lease <i>South San Luis</i>		Well No. <i>#3</i>
Unit Letter <i>E</i>	Section <i>34</i>	Township <i>18 N</i>	Range <i>3 W</i>	County <i>Sandoval</i>
Actual Footage Location of Well:				
<i>1650</i> feet from the <i>North</i> line and <i>330</i> feet from the <i>West</i> line				
Ground Level Elev. <i>6439</i>	Producing Formation <i>Mimbres</i>	Pool <i>South San Luis</i>	Dedicated Acreage: <i>40</i> Acres	

1. Outline the acreage dedicated to the subject well by colored pencil or hatchure marks on the plat below.
2. If more than one lease is dedicated to the well, outline each and identify the ownership thereof (both as to working interest and royalty).
3. If more than one lease of different ownership is dedicated to the well, have the interests of all owners been consolidated by communitization, unitization, force-pooling, etc?

☐ Yes ☐ No If answer is "yes," type of consolidation _____

If answer is "no," list the owners and tract descriptions which have actually been consolidated. (Use reverse side of this form if necessary.) _____

No allowable will be assigned to the well until all interests have been consolidated (by communitization, unitization, forced-pooling, or otherwise) or until a non-standard unit, eliminating such interests, has been approved by the Division.



CERTIFICATION

I hereby certify that the information contained herein is true and complete to the best of my knowledge and belief.

Name: *Thomas D. Chace*
 Position: *Agent*
 Company: _____
 Date: *12/5/80*

I hereby certify that the well location shown on this plat was plotted from field notes of actual surveys made by me or under my supervision, and that the same is true and correct to the best of my knowledge and belief.

December 4, 1980

Date Surveyed: *December 4, 1980*
 Registered Professional Engineer
 and/or Land Surveyor

NM #1161

Certificate No.

SOUTH SAN LUIS WELLS #1,2,3 & 4.

Our operations plan is pretty simple because of the shallow nature of the South San Luis Pay Sand at around 350' and the very small rig that will be used.

The formerly productive South San Luis Field with its water injection program is likely to be our model, but we feel it would be premature at this time to talk about tank battery etc. installations; the water injection and flow pattern do pretty much dictate the location of the wells.

The details of operations have been spelled out in the ADP.

SURFACE USE PLAN

EXISTING ROADS

These wells are located just off the very active "pipeline" road. Since this road is maintained by others we will not need to improve or maintain it.

PLANNED ACCESS ROAD

The closeness of the wells to the "pipeline" road will eliminate the need for any road construction.

LOCATION OF EXISTING WELLS

There are numerous abandoned and formerly producing wells in the area. Maps are attached hereto that show the abandoned wells and the formerly producing wells of the South San Luis Field.

THE LOCATION OF EXISTING AND/OR PROPOSED FACILITIES

This lease has no presently existing facilities save the El Pamco #1 Demas which we propose to re-enter and test. We do not own or control any facilities in the area.

We will provide fences and other needed forms of protective measures to protect livestock and wildlife.

We will level and reseed disturbed areas no longer needed for operations after any construction is completed.

LOCATION AND TYPE OF WATER SUPPLY

The oil field just to our North has a water well producing from the Entrada Formation. It's our plan to make arrangements to secure water here. We have already made arrangements to use some of their equipment.

SOURCE OF CONSTRUCTION MATERIALS

SOURCE OF CONSTRUCTION MATERIALS

Construction materials will be brought from commercial suppliers--there are no suitable sand, gravel etc. or timber present in the area.

METHODS FOR HANDLING WASTE DISPOSAL

These holes will be drilled primarily with air. Cuttings will be burried and the small pit provided for any cable tool work will be properly leveled and reseeded when the rig moves out. Fencing will be provided for protection around pits while awaiting clean-up.

ANCILLIARY FACILITIES

No camps or airstrips will be required at this time.

WELL SITE LAYOUT

Plat attached.

We will not use much in the way of pits and they will be unlined.

PLANS FOR RESTORATION OF SURFACE

No ground disturbance will be done that will require appreciable backfilling--except at Well #3-. We will level all ground disturbance and at Well #3 where there are a number of gullies some 4 or 5 feet deep which will have to be filled in prior to moving in the rig we can do this without making large cuts into surrounding hillsides that would require backfilling.

Revegetation and rehabilitation will be accomplished according to BLM recommendations.

When rig is released, we will fence all pits until final cleanup.

OTHER INFORMATION

The topography is quite varied. Fortunately, the well locations worked out so that practically no ground disturbance is necessary except at Well #3 where gullies will have to be filled in order to maintain the well spacing. The surface strata are the Mesaverde.

The other surface use activity is that of the rancher who owns the surface and there are numerous roads used by the pipeline people.

LESSEE'S OR OPERATOR'S REPRESENTATIVE

Thomas D. Chace
P. O Box 464
Santa Fe NM 87501
Phone 983 6751

OR

Leon Messer
Leon's Drilling
Cuba, New Mexico
289 ~~9188~~ 3875

CERTIFICATION

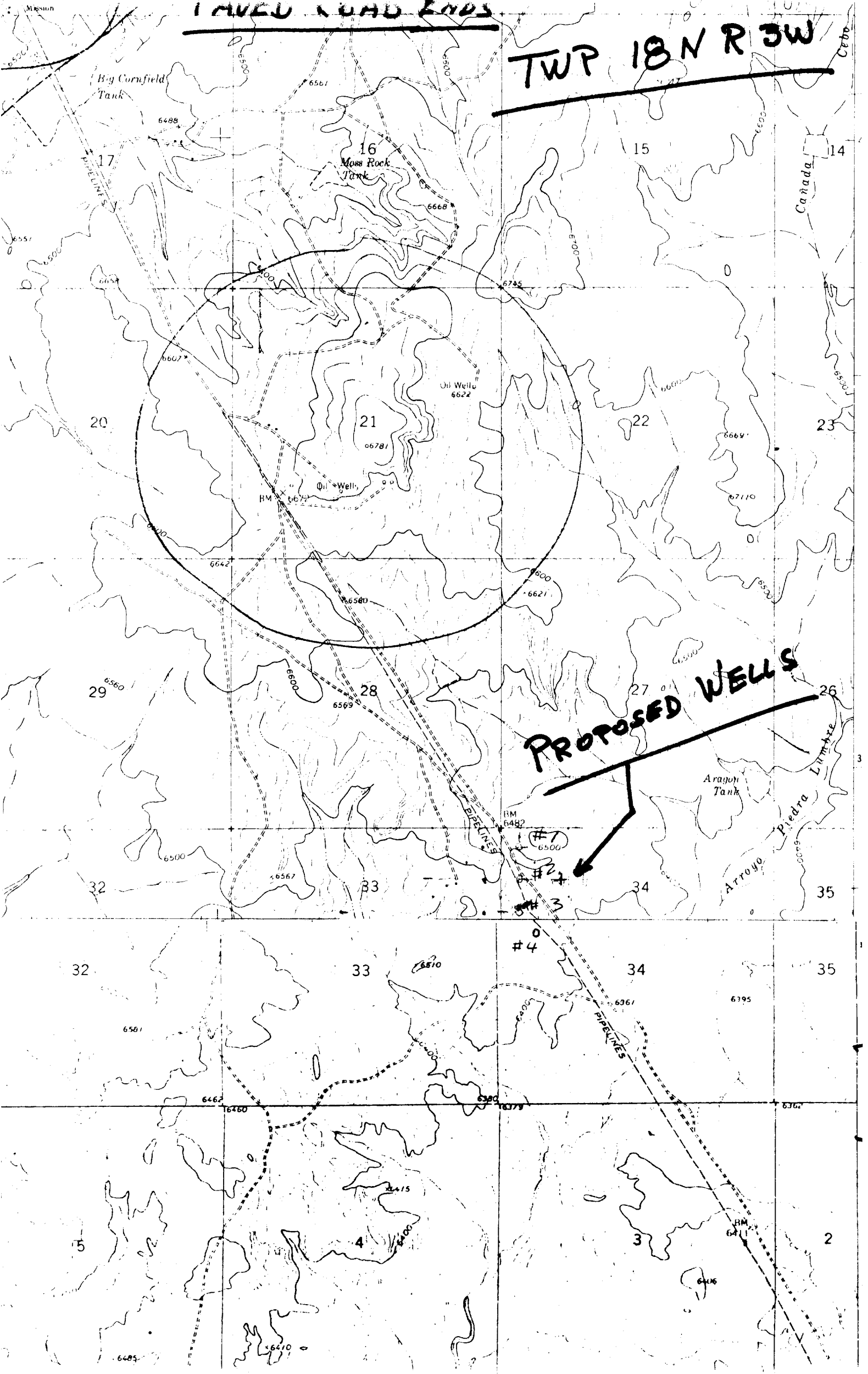
I hereby certify that I, or persons under my direct supervision, have inspected the proposed drillsites and access route; that I am familiar with the conditions that presently exist; that the statements made in this plan are, to the best of my knowledge, true and correct; and that the work associated with the operations proposed herein will be performed by Thomas D. Chace, Leon Messer and others and their contractors and sub-contractors in conformity with this plan and the terms and conditions under which it is approved.

December 5, 1980

Thomas D. Chace
Thomas D. Chace
Agent

IMVED ROAD ENDS

TWP 18N R 3W



(3W)

HULLINS
1308

4 HARVEY
1375
1 STOWE
1379

1 STOWE
1284

0 HARVEY
726

22

21

2 MYRES
730
3 MYRES

1 MYRES

MYRES

0 4 MYRES

4 MYRES
890

1 KING
926

HARVEY
910

SAN LUIS

21 22

28 27

3 RISING
820

MYRES
920

WEST 1 RISING
560

RISING
520

1 RISING
540

HULLINS
584

1 RISING
584

1 DOUGEN
238

HOLMES
1220

1 4 HOLMES
1272

T

18N

WELLS WITHIN ONE MILE
OF NW 1/4 OF SEC 34

28

27

SOUTH SAN LUIS FIELD
sec 33 T18N R3W

HOLMES
1274

0 2 STOWE
598

0 4 EL PAMCO
520

0 3 STOWE
908

1 STOWE
801

1 EL PAMCO
800

2 EL PAMCO
520

0 4 STOWE

10 STOWE
480

1 STOWE
1000

2 STOWE
580

1 EL PAMCO
800

2 ENTRADA
430

STOWE
430

10 STOWE

0 HARVEY

ENTRADA CORR
880

STOWE
350

2 HARVEY
820

1 4 STOWE
383

0 STOWE
480

3 HARVEY

8 STOWE
410

0 STOWE

33

0 HARVEY

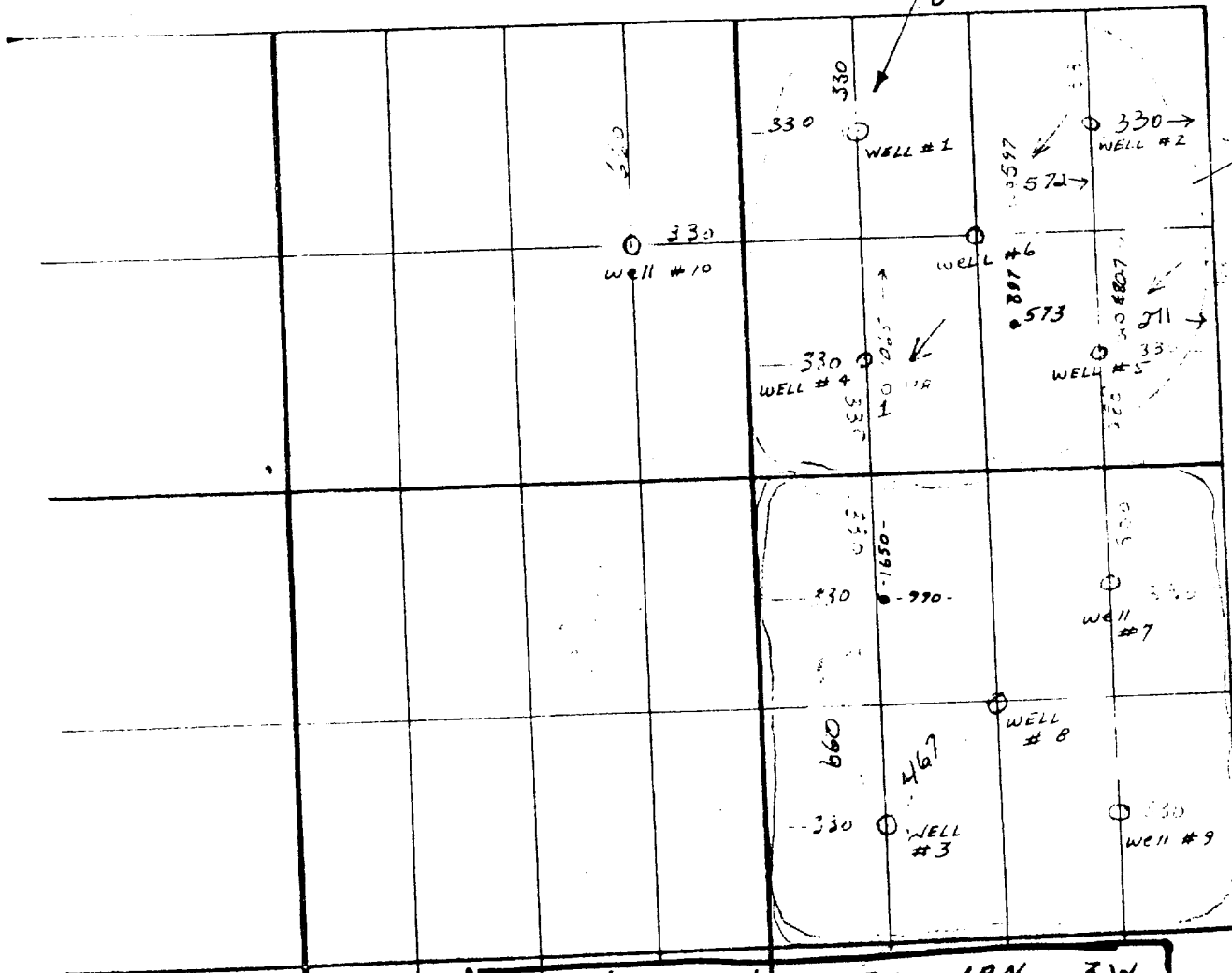
1 HUGHES
1084

SAN LUIS
SOUTH

T 18N

34

BEFORE EXAMINER NUTTER
 OIL CONSERVATION COMMISSION
 EXHIBIT NO. 3307
 CASE NO. 2



NE 1/4 Section 33, 18N 3W
 1" = 500'

SOUTH SAN ~~LUIS~~ LUIS FIELD
 (NO PRESENTLY OPERATING WELLS)

WELL # 3

RIG 0 PIPE RACK



SMALL PIT

PARKING

PIPELINES

ROAD

NM 12512

SEC 34

T18N 23W

WELL # 4

PIPE RACK

RIG 0



SMALL PIT

PARKING

UNITED STATES
DEPARTMENT OF THE INTERIOR
GEOLOGICAL SURVEY

SUNDRY NOTICES AND REPORTS ON WELLS

(Do not use this form for proposals to drill or to deepen or plug back to a different reservoir. Use Form 9-331-C for such proposals.)

1. oil ☒ well gas ☐ well other ☐
2. NAME OF OPERATOR
Ruth Ross
3. ADDRESS OF OPERATOR
P. O. Box 464 Santa Fe NM
4. LOCATION OF WELL (REPORT LOCATION CLEARLY. See space 17 below.)
AT SURFACE: 380 702 1680 741
AT TOP PROD. INTERVAL:
AT TOTAL DEPTH:

16. CHECK APPROPRIATE BOX TO INDICATE NATURE OF NOTICE, REPORT, OR OTHER DATA

REQUEST FOR APPROVAL TO: SUBSEQUENT REPORT OF:
TEST WATER SHUT-OFF ☐ ☐
FRACTURE TREAT ☐ ☐
SHOOT OR ACIDIZE ☐ ☐
REPAIR WELL ☐ ☐
PULL OR ALTER CASING ☐ ☐
MULTIPLE COMPLETE ☐ ☐
CHANGE ZONES ☐ ☐
ABANDON* ☐ ☐
(other) Casing Program

17. DESCRIBE PROPOSED OR COMPLETED OPERATIONS (Clearly state all pertinent details, and give pertinent dates, including estimated date of starting any proposed work. If well is directionally drilled, give subsurface locations and measured and true vertical depths for all markers and zones pertinent to this work.)*

If production is indicated, propose to set 4.5 inch 8' casing to 70 and circulate 30 sz cement to surface.

5. LEASE
12912
6. IF INDIAN, ALLOTTEE OR TRIBE NAME
7. UNIT AGREEMENT NAME
8. FARM OR LEASE NAME
9. WELL NO.
10. FIELD OR WILDCAT NAME
South San Luis Mesavordo
11. SEC., T., R., M., OR BLK. AND SURVEY OR AREA
Section 34
12. COUNTY OR PARISH
Sandoval
13. STATE
New Mex.
14. API NO.
15. ELEVATIONS (SHOW DF, KDB, AND WD)
5439 37

(NOTE: Report results of multiple completion or zone change on Form 9-330.)

ILLECIBLE



Subsurface Safety Valve: Manu. and Type _____ Set @ _____ Ft.

18. I hereby certify that the foregoing is true and correct

SIGNED AS AMENDED TITLE Agent DATE December 15, 1980

APPROVED BY DEC 28 1980 (This space for Federal or State office use)
CONDITIONS OF APPROVAL APPROVED BY SIMS TITLE _____ DATE _____
DISTRICT ENGINEER

Instructions

General: This form is designed for submitting proposals to perform certain well operations, and reports of such operations when completed, as indicated, on Federal and Indian lands pursuant to applicable Federal law and regulations, and, if approved or accepted by any State, on all lands in such State, pursuant to applicable State law and regulations. Any necessary special instructions concerning the use of this form and the number of copies to be submitted, particularly with regard to local, area, or regional procedures and practices, either are shown below or will be issued by, or may be obtained from, the local Federal and/or State office.

Item 4: If there are no applicable State requirements, locations on Federal or Indian land should be described in accordance with Federal requirements. Consult local State or Federal office for specific instructions.

Item 17: Proposals to abandon a well and subsequent reports of abandonment should include such special information as is required by local Federal and/or State offices. In addition, such proposals and reports should include reasons for the abandonment; data on any former or present productive zones, or other zones with present significant fluid contents not sealed off by cement or otherwise; depths (top and bottom) and method of placement of cement plugs; mud or other material placed below, between and above plugs; amount, size, method of parting of any casing, liner or tubing pulled and the depth to top of any left in the hole; method of closing top of well; and date well site conditioned for final inspection looking to approval of the abandonment.