

UNITED STATES
DEPARTMENT OF THE INTERIOR
GEOLOGICAL SURVEY

APPLICATION FOR PERMIT TO DRILL, DEEPEN, OR PLUG BACK

1a. TYPE OF WORK

DRILL ☒DEEPEN ☐PLUG BACK ☐

b. TYPE OF WELL

OIL
WELL ☒GAS
WELL ☐

OTHER

SINGLE
ZONE ☒MULTIPLE
ZONE ☐

2. NAME OF OPERATOR

DOME PETROLEUM CORP.

3. ADDRESS OF OPERATOR

501 Airport Drive, Suite 114, Farmington, New Mexico 87401

4. LOCATION OF WELL (Report location clearly and in accordance with any State requirements.*)

At surface

840' FNL, 1780' FWL

At proposed prod. zone

14. DISTANCE IN MILES AND DIRECTION FROM NEAREST TOWN OR POST OFFICE*

9 miles Southwest of Lybrook Trading Post

15. DISTANCE FROM PROPOSED*

LOCATION TO NEAREST

PROPERTY OR LEASE LINE, FT.

(Also to nearest drlg. unit line, if any)

18. DISTANCE FROM PROPOSED LOCATION*

TO NEAREST WELL, DRILLING, COMPLETED,
OR APPLIED FOR, ON THIS LEASE, FT.

21. ELEVATIONS (Show whether DF, RT, GR, etc.)

6756' GR

23.

PROPOSED CASING AND CEMENTING PROGRAM

SIZE OF HOLE	SIZE OF CASING	WEIGHT PER FOOT	SETTING DEPTH	QUANTITY OF CEMENT
12 1/4"	8 5/8"	24#	200'	200 sacks (circulated)
7 7/8"	4 1/2"	10.5#	5000'	900 sacks (circulated)
This section is subject to administrative approval of the Bureau of Land Management, U.S. Dept. of the Interior, Washington, D.C. 20240				

Move in rotary tools. Drill 12 1/4" hole to 200'. Set 200' new 8 5/8", 24#, K55 Casing. Cement with 200 sxs. Class "B" Cement with 2% CaCl. Wait on cement 12 hours. Install 10" 900 Series BOP. Test to 500 psi. before drilling out from under surface pipe. Check pipe rams daily & blind rams on trips. Drill 7 7/8" hole to T.D. The geological name of the surface formation is Nacimiento. Oil is expected in the Gallup and gas is expected in the Chacra. All other formations are probably water bearing. Pertinent formation tops are estimated as Pictured Cliff 981'; Chacra 1343'; Cliffhouse 1714'; Point Lookout 3359'; Mancos 3553'; and Gallup 4450'. Mud will be low solids non-dispersed. Mud weight 8.8-9.2#/Gal., FL 8-10cc, and viscosity 30-60 sec./quart. No abnormal temperatures or pressures are anticipated. Logging program will be DIL, FDC/CNL with Gamma Ray/Caliper. If productive 4 1/2", 10.5#, K55 Casing will be run and cemented with 700 sxs. 65/35 Pozmix, 6% Gel, and 10# Gilsonite/sx. Followed with 200 sxs. Class "B" Cement with 10% salt. Drilling should require approximately 10 days.

DRILLING OPERATIONS AUTHORIZED ARE
SUBJECT TO COMPLIANCE WITH ATTACHED

IN ABOVE SPACE DESCRIBE PROPOSED PROGRAM: If proposal is to deepen or plug back, give data on present productive zone and proposed new productive zone. If proposal is to drill or deepen directionally, give pertinent data on subsurface locations and measured and true vertical depths. Give blowout preventer program, if any.

24.

SIGNED

H. D. HOLLINGSWORTH

TITLE Drlg. & Production Foreman

DATE November 17, 1980

(This space for Federal or State office use)

PERMIT NO.

APPROVED
AS AMENDED

APPROVAL DATE

APPROVED BY

CONDITIONS OF APPROVAL, IF ANY:

JAN 06 1981
JAMES F. SIMS
DISTRICT ENGINEER

TITLE



All distances must be from the outer boundaries of the Section.

Operator DOMESTIC PETROLEUM CORPORATION			Lease DOMESTIC-TESORO 27		Well No. 2
Unit Letter C	Section 27	Township 22N	Range 7W	County Sandoval	
Actual Footage Location of Wells: 840 feet from the North line and 1780 feet from the West line					
Ground Level Elev: 6756	Producing Formation Gallup		Pool Undesignated Gallup		Dedicated Acreage 40 Acres

1. Outline the acreage dedicated to the subject well by colored pencil or hatchure marks on the plat below.

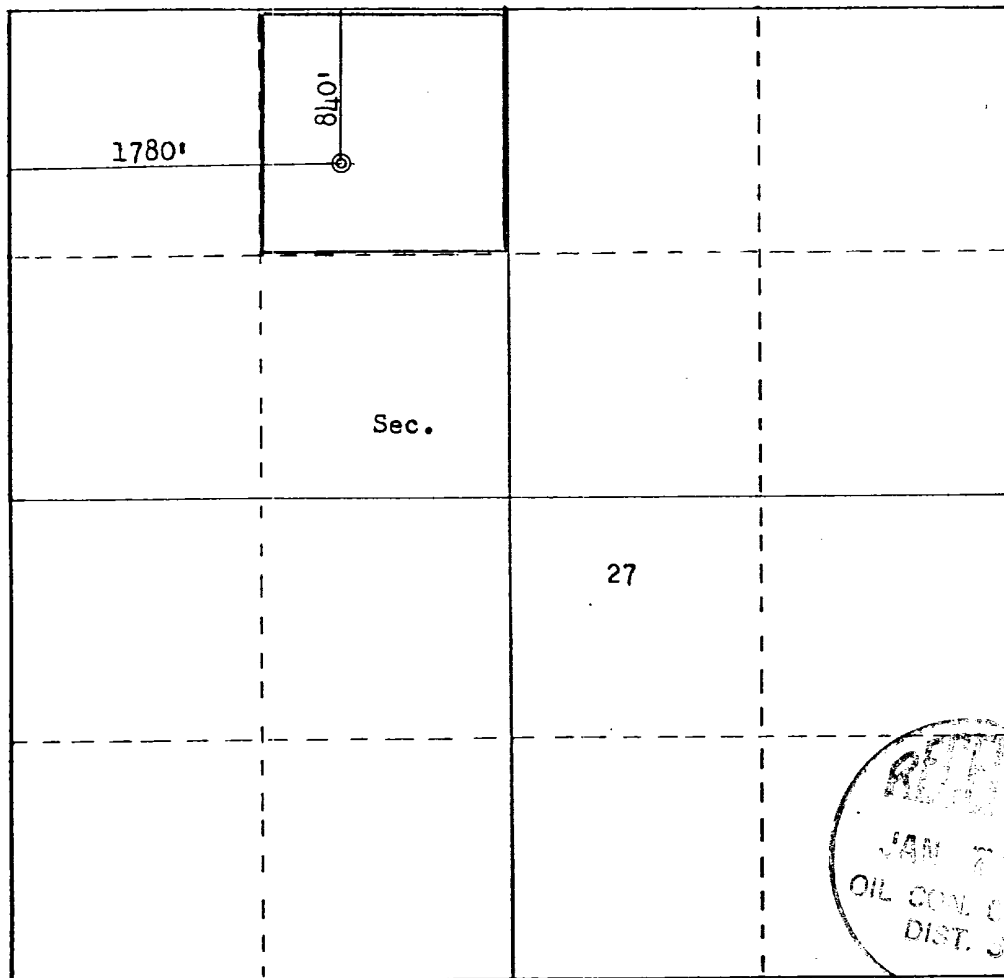
2. If more than one lease is dedicated to the well, outline each and identify the ownership thereof (both as to working interest and royalty).

3. If more than one lease of different ownership is dedicated to the well, have the interests of all owners been consolidated by communitization, unitization, force-pooling, etc?

☐ Yes ☐ No If answer is "yes," type of consolidation _____

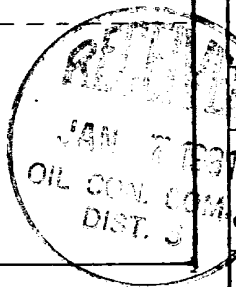
If answer is "no," list the owners and tract descriptions which have actually been consolidated. (Use reverse side of this form if necessary.) _____

No allowable will be assigned to the well until all interests have been consolidated (by communitization, unitization, forced-pooling, or otherwise) or until a non-standard unit, eliminating such interests, has been approved by the Commission.



Scale: 1"=1000'

CERTIFICATION	
I hereby certify that the information contained herein is true and complete to the best of my knowledge and belief.	
<i>H. D. Hollingsworth</i>	
Name	H. D. HOLLINGSWORTH
Position	Drilg. & Production Foreman
Company	DOMESTIC PETROLEUM CORP.
Date	November 17, 1980
I hereby certify that the well location shown on this plat was plotted from field notes of actual surveys made by me or under my supervision, and that the same is true and correct to the best of my knowledge and belief.	
Date Surveyed	November 17, 1980
Registered Professional Engineer and Land Surveyor	
<i>Fred B. Kerr Jr.</i>	
Certificate No.	3950





DOME PETROLEUM CORP.

501 AIRPORT DRIVE

SUITE 107

TELEPHONE
(505) 325-2897

FARMINGTON, NEW MEXICO 87401

Development Plan For Surface Use
Dome Petroleum Corp.
Dome Tesoro 27-#2, 840' FNL, 1780' FWL
Section 27-T22N-R7W
Sandoval County, New Mexico

1. Existing Roads

The main road to the location is that from Counselors Trading Post to Pueblo Pintado, leaving this road approximately 9 miles South of Counselors and using existing side road.

2. Planned Access Roads

The access road, to be routed as shown on the attached map, will be approximately 100' long and 18' wide with adequate ditch and water bars.

3. Location Of Existing Wells

Existing wells within one mile of location are shown on the attached topographic map.

4. Location Of Proposed Facilities

Development of commercial production will require separation facilities on the location pad. Equipment and pits will be fenced as required for protection of livestock and wildlife. Above ground facilities will be painted brown or grey to blend in with the surrounding area as specified by the BLM. The disturbed areas no longer needed for operations after well completion will be restored to natural contour and reseeded.

5. Location & Type Of Water Supply

To be hauled from Escrito, approximately 25 miles to the North.

6. Source Of Construction Materials

Not applicable.

7. Method Of Handling Waste Material

All garbage and trash that can be burned shall be burned. All trash that cannot be burned will be contained in a trash pit and covered with a minimum of 24 inches of dirt. All drilling waste such as cuttings, overflows of oil, water, and drilling fluids will be contained in the reserve pit and buried with adequate cover upon completion of operations. The reserve pit will be fenced until cleanup operations are commenced. Toilet facilities will be provided.

Dome Petroleum Corp.
Development Plan For Surface Use

8. Ancillary Facilities

No camps or airstrips are proposed for this location.

9. Well Site Layout

See attached diagram.

10. Plans For Restoration Of Surface

Cleanup of the location will commence immediately following the removal of the drilling equipment. The reserve pit will be fenced until restoration operations are commenced. The location will be returned to original contour if the well is not productive. Both the road and location will be reseeded in accordance with BLM specifications.

11. Other Information

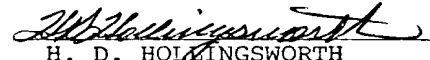
This location is on sparsely vegetated sandy land. Vegetation consists principally of sagebrush and native grasses. There is no water source in the immediate area.

12. Lessee's Or Operator's Representative

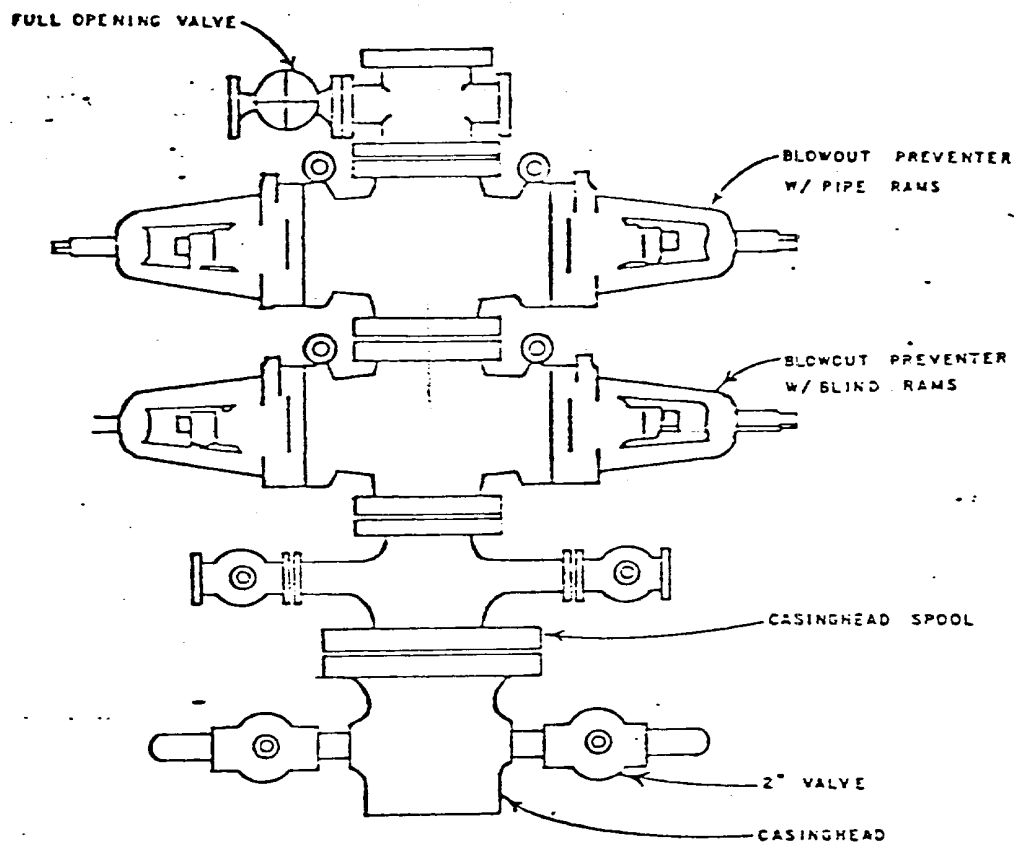
Dome Petroleum Corporation
H. D. Hollingsworth
501 Airport Drive, Suite 114
Farmington, New Mexico 87401
Phone: 505-325-2897 Office
505-327-1548 Home

13. Certification

I hereby certify that I, or persons under my direct supervision, have inspected the proposed drill site and access route; that I am familiar with the conditions which presently exist; that the statements made in this plan are, to the best of my knowledge, true and correct; and that the work associated with the operations proposed herein will be performed by Dome Petroleum Corp. and its contractors and subcontractors in conformity with this plan and the terms and conditions under which it is approved.


H. D. HOLLINGSWORTH
Drilling & Production Foreman
Dome Petroleum Corporation

HDH:ig
November 17, 1980



DOME PETROLEUM CORP.

SUITE 1500, COLORADO STATE BANK BLDG.

1600 BROADWAY

DENVER, COLORADO 80202

STANDARD BLOWOUT PREVENTER ASSEMBLY
10" 900 SERIES

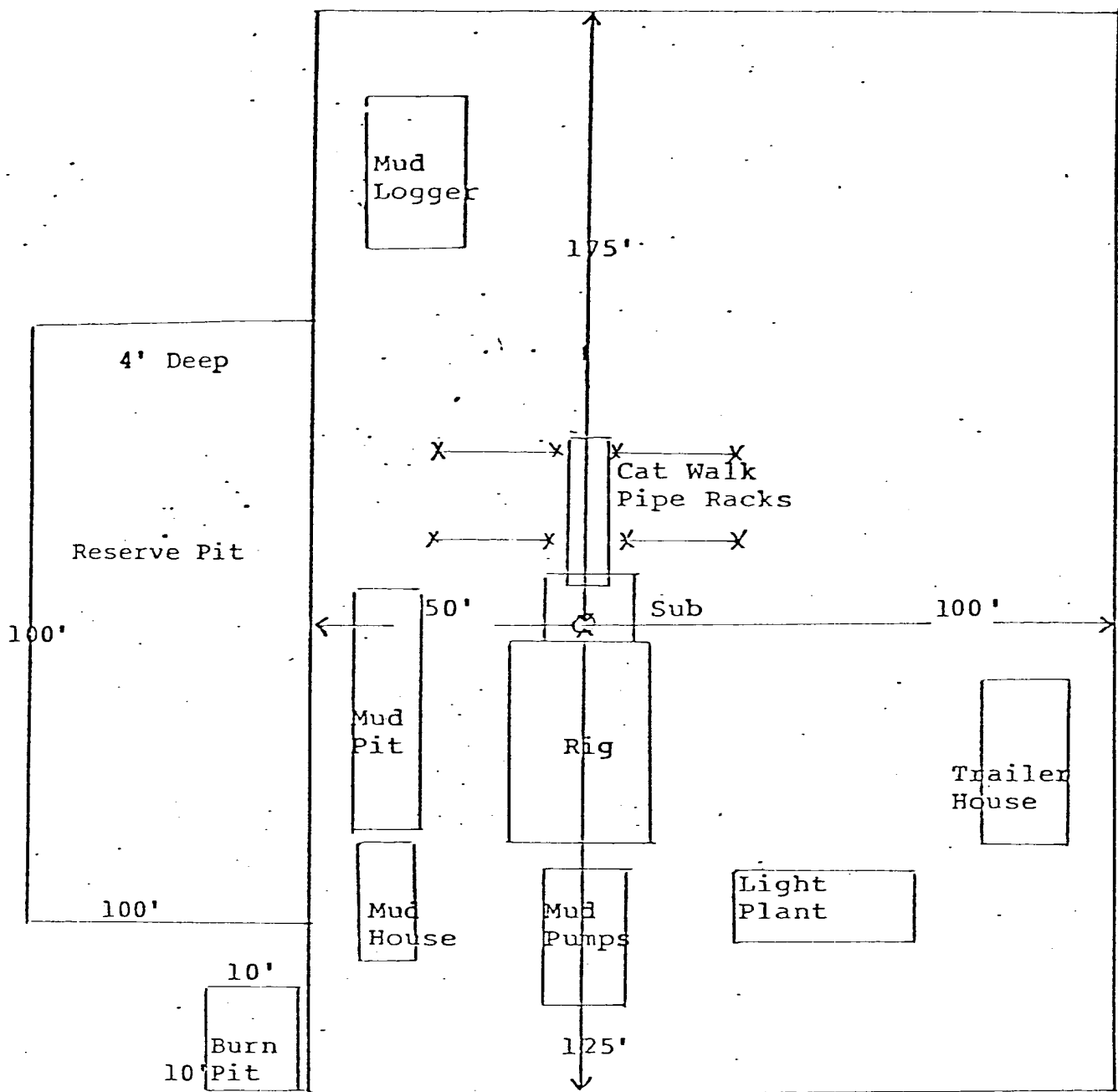
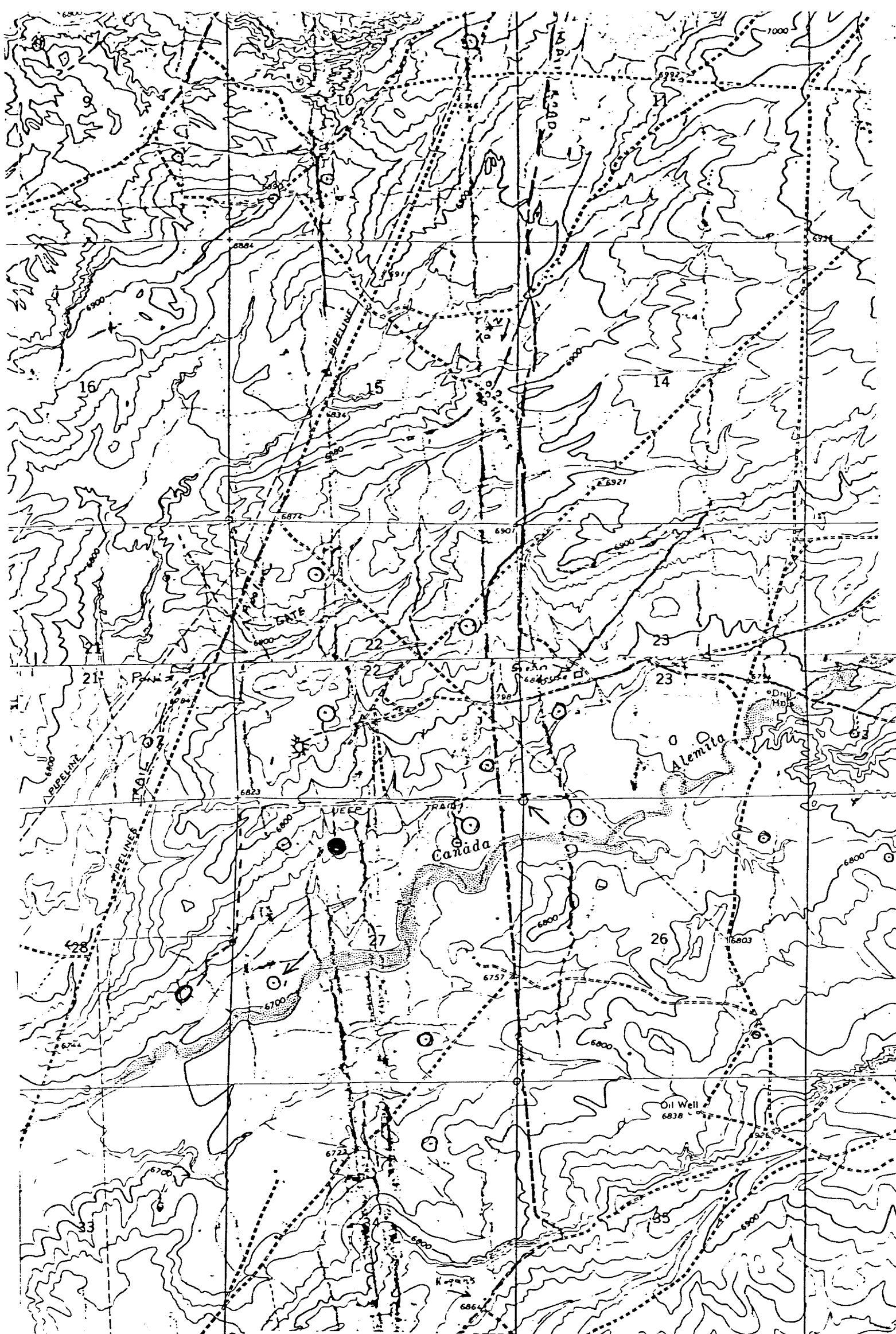


DIAGRAM OF WELL LOCATION
AND DRILLING RIG LAYOUT



Vicinity Map for
DOME PETROLEUM CORP. #2 DOME-TESORO 27
840'FNL 1780'FWL Sec. 27-T22N-R7W
SANDOVAL COUNTY, NEW MEXICO