

UNITED STATES
DEPARTMENT OF THE INTERIOR
GEOLOGICAL SURVEY

APPLICATION FOR PERMIT TO DRILL, DEEPEN, OR PLUG BACK

1a. TYPE OF WORK

DRILL ☒DEEPEN ☐PLUG BACK ☐

b. TYPE OF WELL

OIL
WELL ☒GAS
WELL ☐OTHER ☐SINGLE
ZONE ☒MULTIPLE
ZONE ☐

2. NAME OF OPERATOR

DOME PETROLEUM CORP.

3. ADDRESS OF OPERATOR

501 Airport Drive, Suite 114, Farmington, New Mexico 87401

4. LOCATION OF WELL (Report location clearly and in accordance with any State requirements.)*

At surface

330' FNL, 960' FWL

At proposed prod. zone

14. DISTANCE IN MILES AND DIRECTION FROM NEAREST TOWN OR POST OFFICE*

9 miles Southwest of Lybrook Trading Post

15. DISTANCE FROM PROPOSED*

LOCATION TO NEAREST
PROPERTY OR LEASE LINE, FT.
(Also to nearest drlg. unit line, if any)18. DISTANCE FROM PROPOSED LOCATION*
TO NEAREST WELL, DRILLING, COMPLETED,
OR APPLIED FOR, ON THIS LEASE, FT.

16. NO. OF ACRES IN LEASE

160

19. PROPOSED DEPTH

5000'

17. NO. OF ACRES ASSIGNED
TO THIS WELL

40

20. ROTARY OR CABLE TOOLS

Rotary

21. ELEVATIONS (Show whether DF, RT, GR, etc.)

6758' GR

22. APPROX. DATE WORK WILL START*

12/01/80

23.

PROPOSED CASING AND CEMENTING PROGRAM

SIZE OF HOLE	SIZE OF CASING	WEIGHT PER FOOT	SETTING DEPTH	QUANTITY OF CEMENT
12 1/4"	8 5/8"	24#	200'	200 sacks (circulated)
7 7/8"	4 1/2"	10.5#	5000'	900 sacks (circulated)

This program is subject to administrative
approval by 30 CFR 290.

Move in rotary tools. Drill 12 1/4" hole to 200'. Set 200' new 8 5/8", 24#, K55 Casing. Cement with 200 sxs. Class "B" Cement with 2% CaCl. Wait on cement 12 hours. Install 10" 900 Series BOP. Test to 500 psi. before drilling out from under surface pipe. Check pipe rams daily & blind rams on trips. Drill 7 7/8" hole to T.D. The geological name of the surface formation is Nacimiento. Oil is expected in the Gallup and gas is expected in the Chacra. All other formations are probably water bearing. Pertinent formation tops are estimated as Pictured Cliff 948'; Chacra 1310'; Cliffhouse 1681'; Point Lookout 3526'; Mancosque 4417'; and Gallup 4417'. Mud will be low solids non-dispersed. Mud weight 8.8-9.5 lb/Gal. 8-10 cc, and viscosity 30-60 sec./quart. No abnormal temperatures or pressures are anticipated. Logging program will be DIL, FDC/CNL with Gamma Ray/Caliper. If production 4-10 bbls/10.5#, K55 Casing will be run and cemented with 700 sxs. 65/35 Pozmix, 6% Gel, and 10% Colloidal. Followed with 200 sxs. Class "B" Cement with 10% salt. Drilling should require approximately 10 days.


DRILLING OPERATIONS AUTHORIZED ARE
SUBJECT TO COMPLIANCE WITH ATTACHED

"GENERAL REQUIREMENTS"

IN ABOVE SPACE DESCRIBE PROPOSED PROGRAM: If proposal is to deepen or plug back, give data on present productive zone and proposed new productive zone. If proposal is to drill or deepen directionally, give pertinent data on subsurface locations and measured and true vertical depths. Give blowout preventer program, if any.

24.

SIGNED



H. D. HOLLINGSWORTH

TITLE Drlg. & Production Foreman

DATE November 17, 1980

(This space for Federal or State office use)

PERMIT NO.

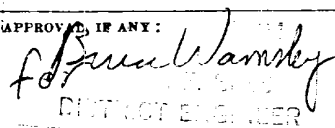
APPROVAL DATE

APPROVED BY

TITLE

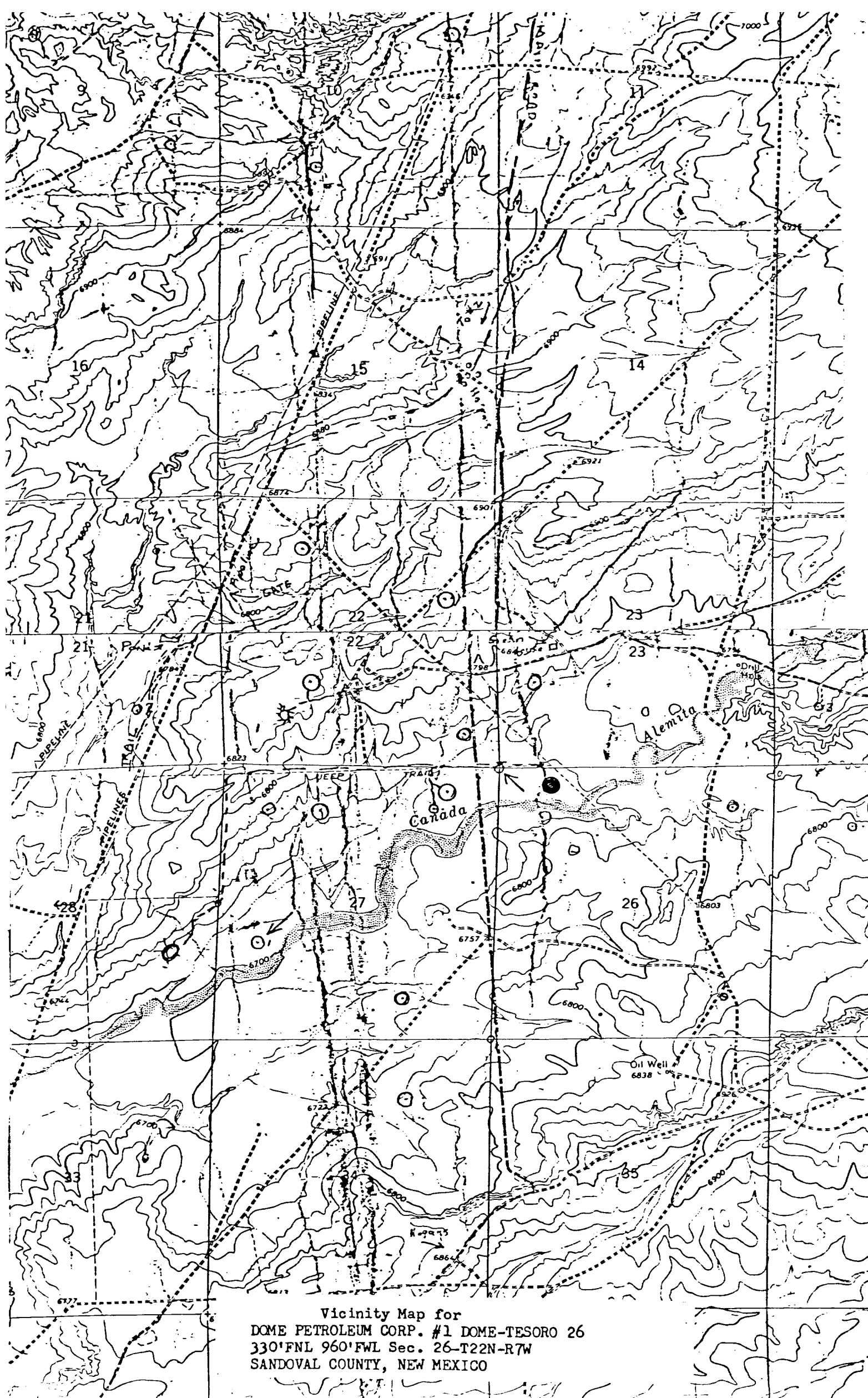
DATE

CONDITIONS OF APPROVAL, IF ANY:


PAUL WAMSELEY
DISTRICT ENGINEER

ok 3m

Scale: 1"=1000'



Vicinity Map for
DOME PETROLEUM CORP. #1 DOME-TESORO 26
330'FNL 960'FWL Sec. 26-T22N-R7W
SANDOVAL COUNTY, NEW MEXICO