

STATE OF NEW MEXICO
ENERGY AND MINERALS DEPARTMENT

OIL CONSERVATION DIVISION

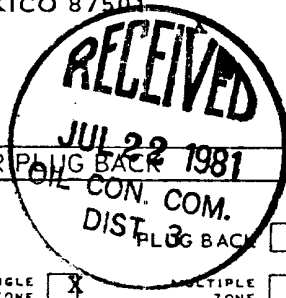
P. O. BOX 2088

SANTA FE, NEW MEXICO 87501

30-043-20585

Form C-101
Revised 10-1-78

NO. OF COPIES RECEIVED	
DISTRIBUTION	
SANTA FE	
FILE	
U.S.G.S.	
LAND OFFICE	
OPERATOR	



5A. Indicate Type of Lease
STATE ☒ FEE ☐

5. State Oil & Gas Lease No.
L-6952

APPLICATION FOR PERMIT TO DRILL, DEEPEN, OR PLUG BACK

1a. Type of Work
b. Type of Well
OIL WELL ☒ GAS WELL ☒ OTHER ☐ DEEPEN ☐ PLUG BACK ☐ SINGLE ZONE ☒ MULTIPLE ZONE ☐

2. Name of Operator
Wexpro Company

3. Address of Operator
P. O. Box 1129, Rock Springs, Wyoming 82901 (307) 382-9791

4. Location of Well
UNIT LETTER K - - LOCATED 1980 FEET FROM THE West LINE
AND 1980 FEET FROM THE South LINE OF SEC. 16 TWP. 21N RGE. 4W NMAPM

7. Unit Agreement Name
- - -

8. Farm or Lease Name
Armijo Reservoir

9. Well No.
1

10. Field and Pool, or Wildcat
Wildcat ml

12. County
Sandoval

19. Proposed Depth
4200

19A. Formation
Mancos

20. Rotary or C.T.
Rotary

21. Elevations (Show whether DF, KT, etc.)
GR 7183'

21A. Kind & Status Plug Bond
Blanket - on file

21B. Drilling Contractor
Undetermined

22. Approx. Date Work will start
Within 60 days of approval

23. PROPOSED CASING AND CEMENT PROGRAM

SIZE OF HOLE	SIZE OF CASING	WEIGHT PER FOOT	SETTING DEPTH	SACKS OF CEMENT	EST. TOP
12-1/4	9-5/8	36	300	180	Surface
7-7/8	5-1/2	17	4200	to be determined by caliper logs	2815

Wexpro Company plans to drill the subject well with mud to test the Point Lookout member of the Mesaverde formation. After surface casing is set, a 10-inch 3000 psi double gate blowout preventer will be installed. After a WOC time of 12 hours, surface casing and all preventer rams will be pressure tested to 2500 psi for 15 minutes using the rig pump and mud. Logs: dual induction laterolog (with 2-inch linear, 5-inch logarithmic) from from bottom of surface casing to total depth; compensated neutron-formation density gamma ray caliper log from surface casing to total depth. If production possible: run 4200' of 5-1/2" casing, 17-pound K-55, cement will be determined from caliper logs; install a 6-inch 5000 psi double gate preventer with blind rams in the bottom and 2-3/8-inch pipe rams in the top. Blind rams and pipe rams will each be pressure tested to 3000 psi for 15 minutes. We do not anticipate fracturing at this time.

APPROVAL VALID
FOR 90 DAYS UNLESS
DRILLING COMMENCED.

IN ABOVE SPACE DESCRIBE PROPOSED PROGRAM: IF PROPOSAL IS TO DEEPEN OR PLUG BACK, GIVE DATA ON PREVIOUS PRODUCTIVE ZONE. GIVE BLOWOUT PREVENTER PROGRAM, IF ANY.

I hereby certify that the information above is true and complete to the best of my knowledge and belief.

Signed C. J. Mader Title Drilling Superintendent Date July 15, 1981

(This space for State Use)

Original Signed by CHARLES GHOLSON

APPROVED BY _____ TITLE _____ DATE JUL 29 1981

CONDITIONS OF APPROVAL, IF ANY:

All distances must be from the outer boundaries of the Section.

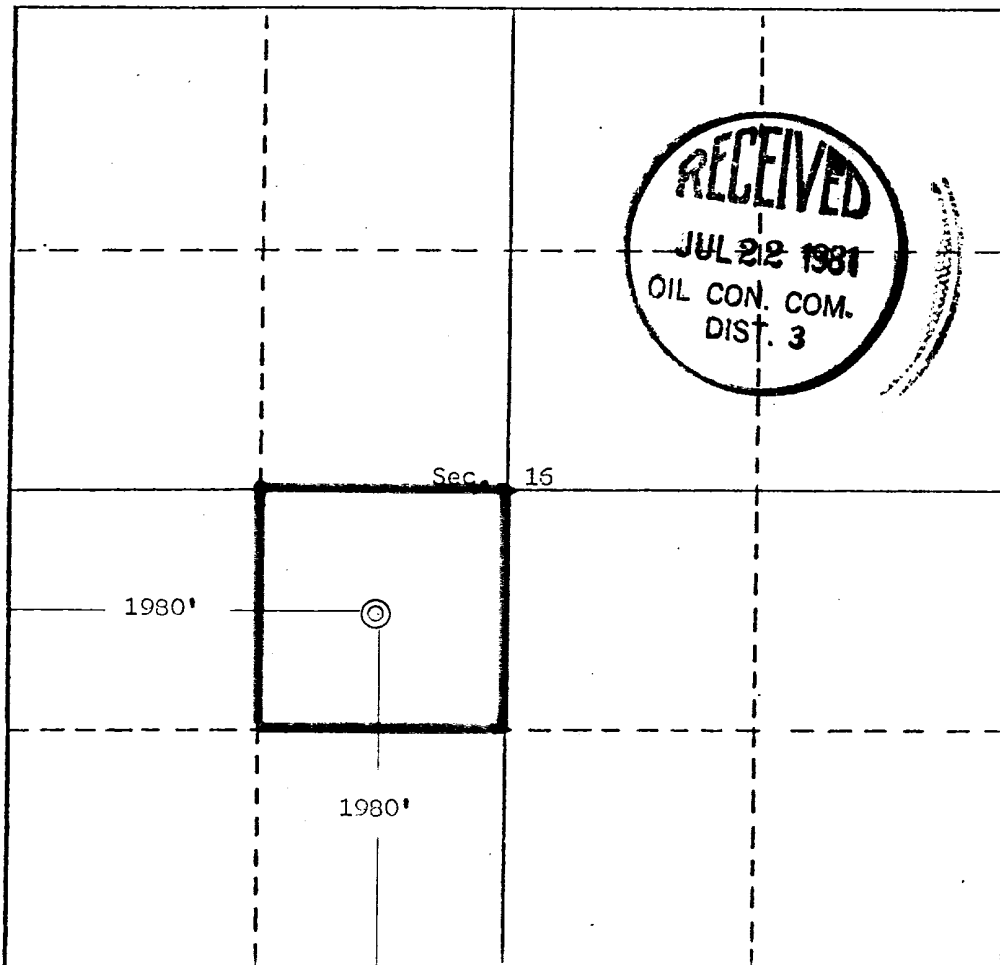
Operator Wexpro Company			Lease Armijo Reservoir L-6952		Well No. 1
Unit Letter K	Section 16	Township 21 North	Range 4 West	County Sandoval	
Actual Footage Location of Well: 1980 feet from the South line and 1980 feet from the West line					
Ground Level Elev. 7183	Producing Formation Point Lookout		Pool ---	Dedicated Acreage: 40 Acres	

1. Outline the acreage dedicated to the subject well by colored pencil or hachure marks on the plat below.
2. If more than one lease is dedicated to the well, outline each and identify the ownership thereof (both as to working interest and royalty).
3. If more than one lease of different ownership is dedicated to the well, have the interests of all owners been consolidated by communitization, unitization, force-pooling, etc? N/A

☐ Yes ☐ No If answer is "yes," type of consolidation _____

If answer is "no," list the owners and tract descriptions which have actually been consolidated. (Use reverse side of this form if necessary.) _____

No allowable will be assigned to the well until all interests have been consolidated (by communitization, unitization, forced-pooling, or otherwise) or until a non-standard unit, eliminating such interests, has been approved by the Division.



CERTIFICATION

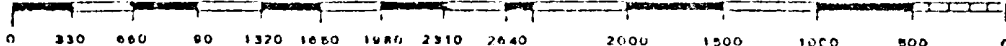
I hereby certify that the information contained herein is true and complete to the best of my knowledge and belief.

Name Lee Martin
Position Asst. Drilling Supt.
Company Wexpro Company
Date July 20, 1981

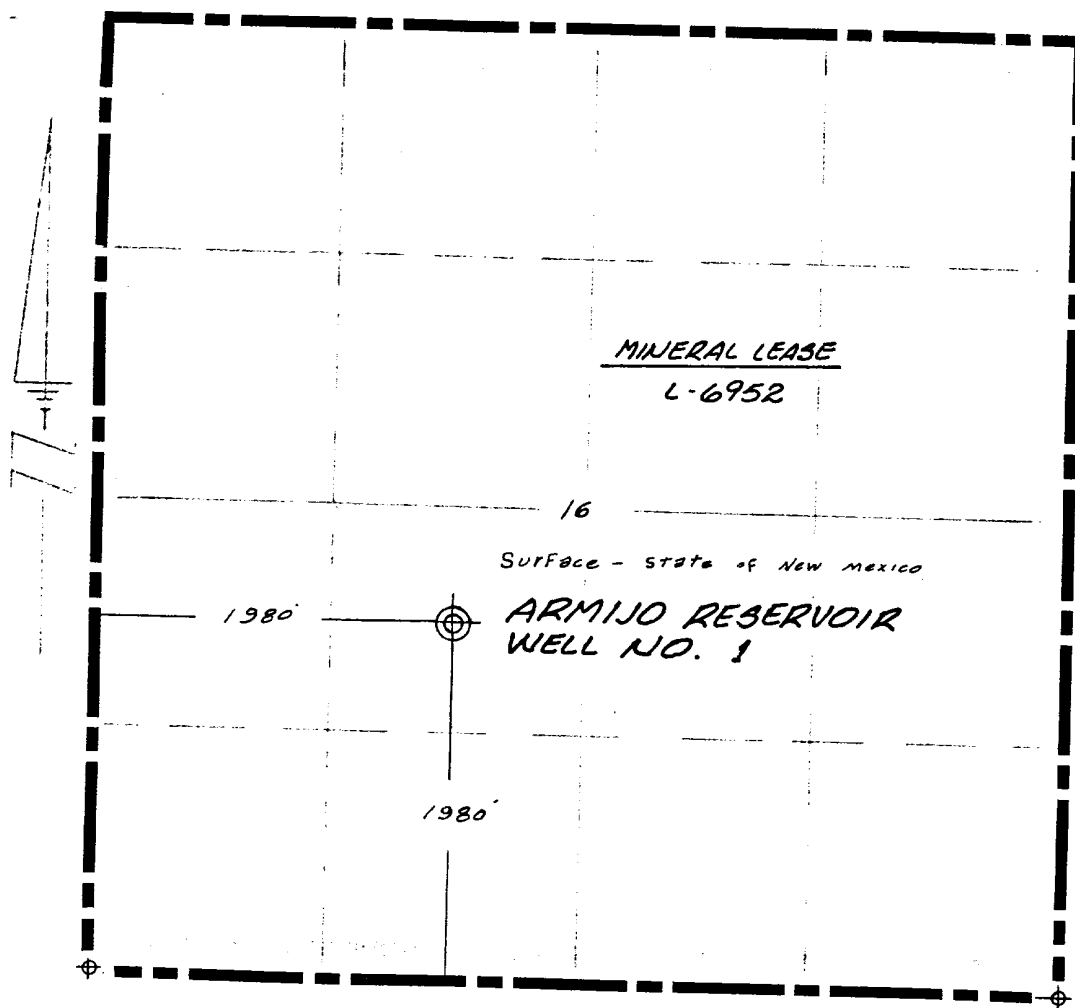
I hereby certify that the well location shown on this plat is correct to the best of my knowledge and belief. (If you are a field note of actual survey made by me or under my supervision and that the same is true and correct to the best of my knowledge and belief.)

Date Surveyed June 14, 1981
Registered Professional Engineer and/or Land Surveyor

Edgar L. Risenhcover
Certificate No. 5970
Edgar L. Risenhcover, L.S.



T. 21 N., R. 4 W., N.M.P.M.
SANDOVAL COUNTY, NEW MEXICO



LOCATION PLAN
SCALE 1" = 1000'

--- SURFACE
--- MINERAL

LEGEND

- ⊕ Well
- ⊕ Stone Corner
- ⊕ Pipe Corner

This is to certify that the above plan
notes of actual surveys made by me
and that the same are true and correct
knowledge.



ENGINEERING RECORD	
SURVEYED BY	ELR
REFERENCES	G.L.O. PLAT. <input checked="" type="checkbox"/> U.S.G.S. QUAD. MAP <input checked="" type="checkbox"/>
LOCATION DATA	
FEES	WEST OF CUBA
LOCATION: NE 1/4 SW 1/4 Sec. 16, T-21-N, R-4-W, N.M.P.M.	
1980' FSL - 1980' FNL	
SANDOVAL COUNTY, NEW MEXICO	
WELL ELEVATION:	



WEXPRO COMPANY

CERTIFIED WELL LOCATION
AND
WELL SITE PLAN

ARMIJO RESERVOIR WELL NO. 1

DRAWN: ELR

SCALE 1" = 1000'

CHECKED:

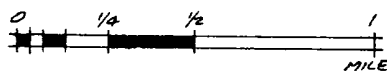
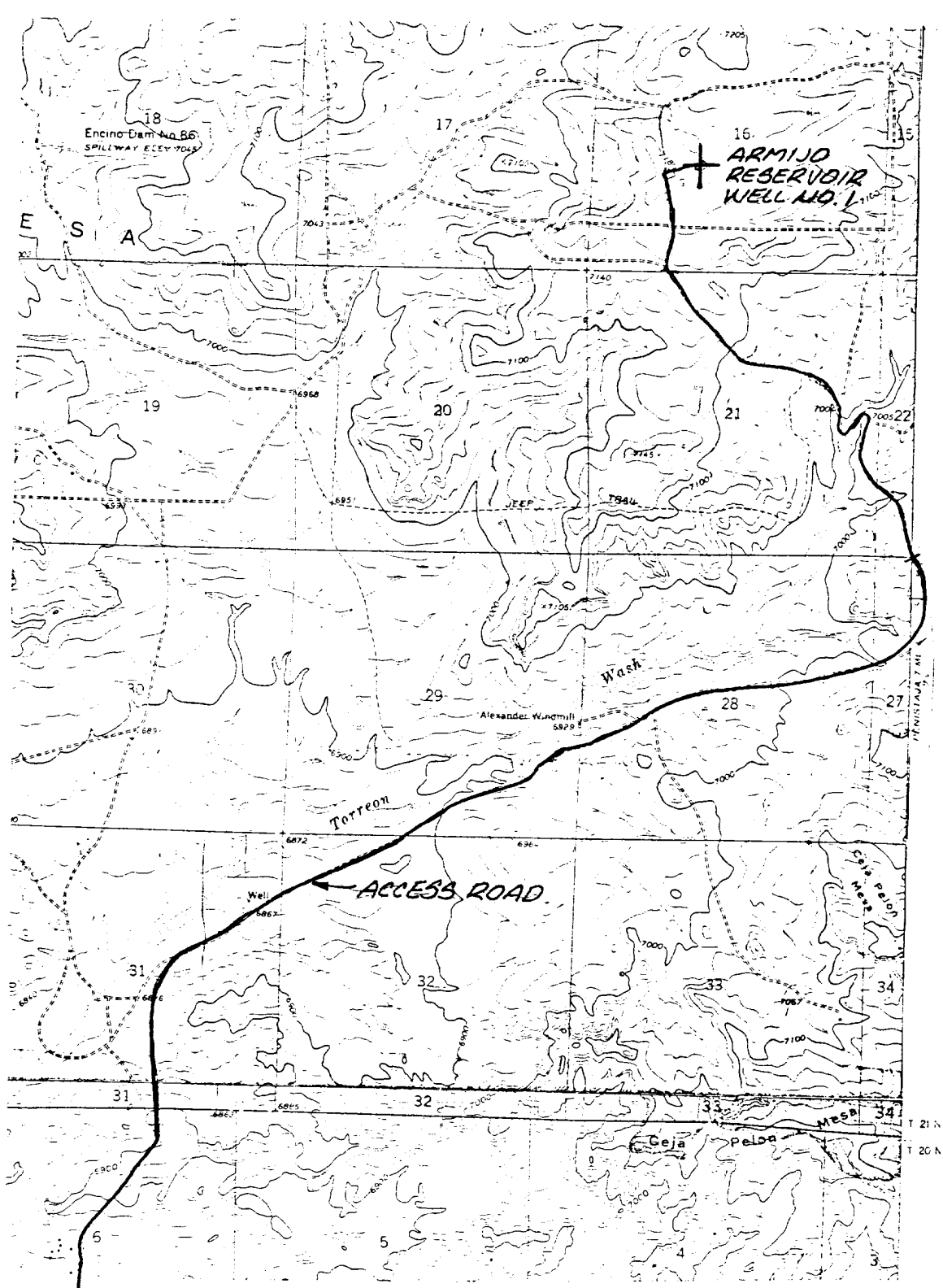
DATE:

APPROVED: RWH

M-16243

7/83

1/4



AREA MAP
 ARMIJO RESERVOIR WELL
 NO. 1

710.81 D.A.P.

A 11

M. 16202

M-16241

