

Form 9-331C
(May 1963)SUBMIT IN TRIPLICATE*
(Other instructions on
reverse side)Form approved.
Budget Bureau No. 42-R1425.UNITED STATES
DEPARTMENT OF THE INTERIOR
GEOLOGICAL SURVEY

30-043-20598

5. LEASE DESIGNATION AND SERIAL NO.

NM 28748

6. IF INDIAN, ALLOTTEE OR TRIBE NAME

7. UNIT AGREEMENT NAME

8. FARM OR LEASE NAME

Kinsale

9. WELL NO.

#1

10. FIELD AND POOL, OR WILDCAT

Undesignated Chacra

11. SEC., T., R., M., OR BLK.
AND SURVEY OR AREA

P Sec 26 T23N R7W

12. COUNTY OR PARISH 13. STATE

Sandoval

NM

1a. TYPE OF WORK

DRILL ☒DEEPEN ☐PLUG BACK ☐

b. TYPE OF WELL

OIL
WELL ☐GAS
WELL ☒

OTHER

SINGLE
ZONE ☒MULTIPLE
ZONE ☐

2. NAME OF OPERATOR

DUGAN PRODUCTION CORP.

3. ADDRESS OF OPERATOR

P O Box 208, Farmington, NM 87401

4. LOCATION OF WELL (Report location clearly and in accordance with any State requirements.*)

At surface

790' FSL - 790' FEL

At proposed prod. zone

14. DISTANCE IN MILES AND DIRECTION FROM NEAREST TOWN OR POST OFFICE*

3 miles south of Lybrook, NM

15. DISTANCE FROM PROPOSED*

LOCATION TO NEAREST

PROPERTY OR LEASE LINE, FT.

(Also to nearest drlg. unit line, if any) 790'

18. DISTANCE FROM PROPOSED LOCATION*
TO NEAREST WELL, DRILLING, COMPLETED,
OR APPLIED FOR, ON THIS LEASE, FT.

1 mile

16. NO. OF ACRES IN LEASE

640

17. NO. OF ACRES ASSIGNED

TO THIS WELL

160

19. PROPOSED DEPTH

2880'

20. ROTARY OR CABLE TOOLS

Rotary

21. ELEVATIONS (Show whether DF, RT, GR, etc.)

7180' GL

22. APPROX. DATE WORK WILL START*

ASAP - exp. date 11-1-81

23. PROPOSED CASING AND CEMENTING PROGRAM

SIZE OF HOLE	SIZE OF CASING	WEIGHT PER FOOT	SETTING DEPTH	QUANTITY OF CEMENT
12-1/4"	8-5/8"	24#	200'	160 sx circ. to surface
6-1/4"	4-1/2"	10.5#	2880'	280' cu.ft. slurry

Plan to drill with as little spud mud as possible to approx. 200' and then set surface casing and circ. to surface. Then will drill to approx. 2880' to test the Chacra formation to see if there are any productive zones. If so, plan to run 4 1/2" casing, cement, covering top of Ojo Alamo, perforate, frac, clean up after frac and complete well with 1 1/2" tubing.

GAS NOT DEDICATED.

IN ABOVE SPACE DESCRIBE PROPOSED PROGRAM: If proposal is to deepen or plug back, give data on present productive zone and proposed new productive zone. If proposal is to drill or deepen directionally, give pertinent data on subsurface locations and measured and true vertical depths. Give blowout preventer program, if any.

24. SIGNED Jerome P. McHugh Jr. TITLE Landman DATE 9-22-81
 (This space for Federal or State office use)

PERMIT NO.

APPROVAL DATE

APPROVED BY [Signature]
CONDITIONS OF APPROVAL, IF ANY:TITLE Acting Dist. Super.DATE 10/7/81

NMOC

OIL CONSERVATION DIVISION

STATE OF NEW MEXICO
ENERGY AND MINERALS DEPARTMENTP. O. BOX 2088
SANTA FE, NEW MEXICO 87501Form C-102
Revised 10-1-78

All distances must be from the outer boundaries of the Section.

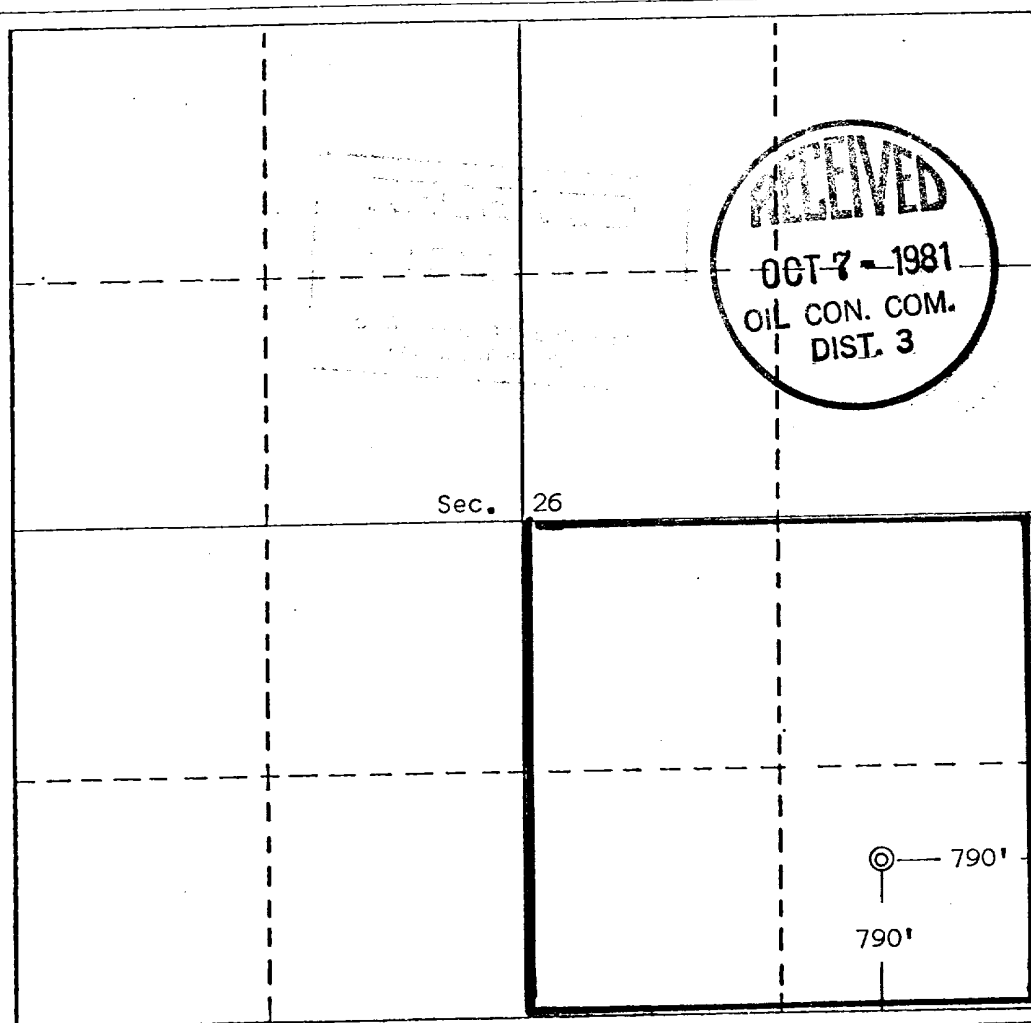
Operator Dugan Production Corporation			Lease Kinsale		Well No. #1
Unit Letter P	Section 26	Township 23 North	Range 7 West	County Sandoval	
Actual Footage Location of Well: 790 feet from the South line and 790 feet from the East line					
Ground Level Elev. 7180	Producing Formation Chacra	Pool Undesignated Chacra		Dedicated Acreage: 160 Acres	

1. Outline the acreage dedicated to the subject well by colored pencil or hachure marks on the plat below.
2. If more than one lease is dedicated to the well, outline each and identify the ownership thereof (both as to working interest and royalty).
3. If more than one lease of different ownership is dedicated to the well, have the interests of all owners been consolidated by communitization, unitization, force-pooling, etc?

☐ Yes ☐ No If answer is "yes," type of consolidation _____

If answer is "no," list the owners and tract descriptions which have actually been consolidated. (Use reverse side of this form if necessary.) _____

No allowable will be assigned to the well until all interests have been consolidated (by communitization, unitization, forced-pooling, or otherwise) or until a non-standard unit, eliminating such interests, has been approved by the Division.



CERTIFICATION

I hereby certify that the information contained herein is true and complete to the best of my knowledge and belief.

Jerome P. McHugh Jr.
Name Jerome P. McHugh Jr.

Position Landman

Company Dugan Production Corp.

Date 9-22-81

I hereby certify that the location shown on this plat was obtained from field notes of actual surveys made by me or under my supervision and that the same is true and correct to the best of my knowledge.

Date Surveyed

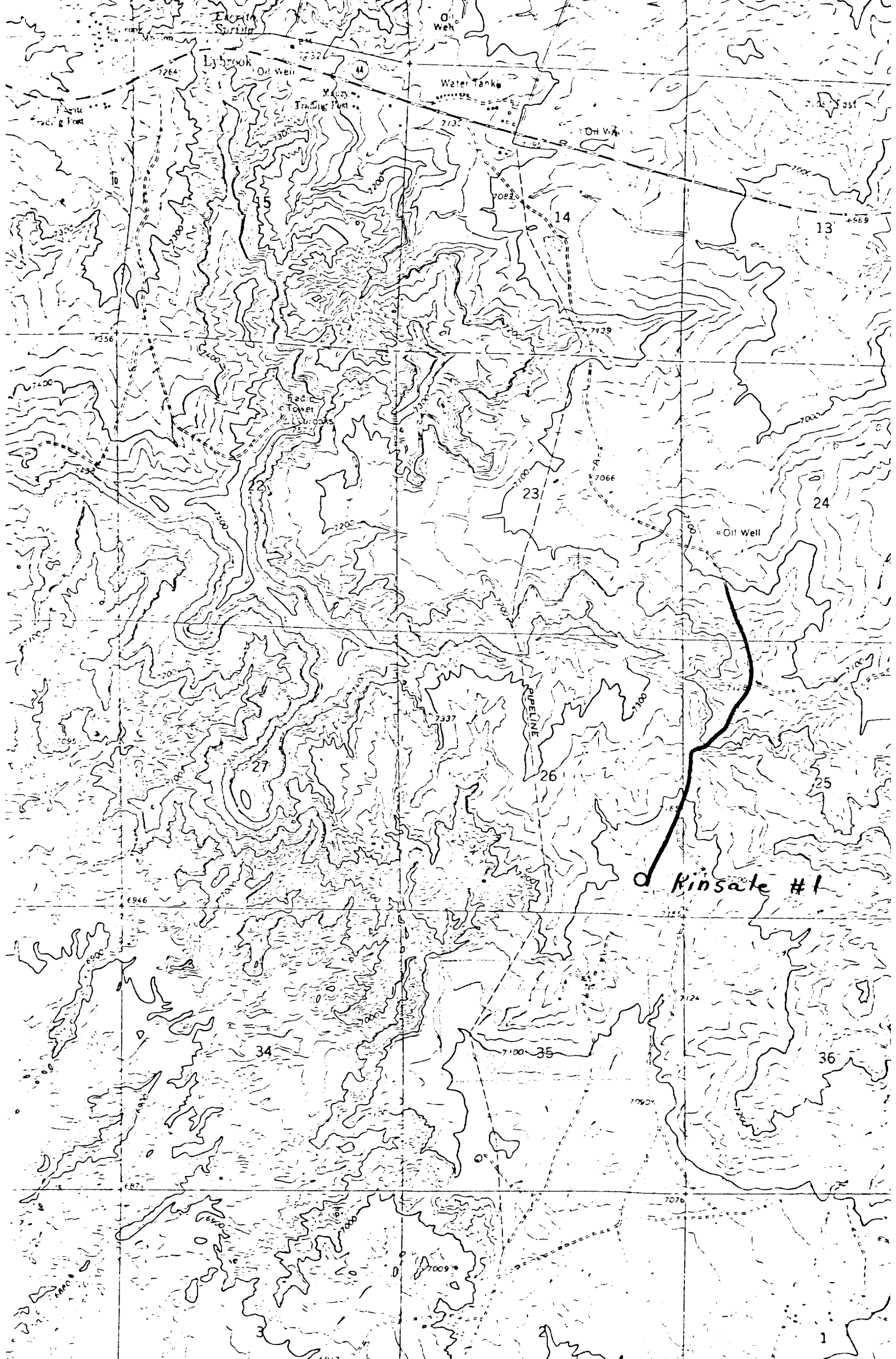
August 24, 1981

Registered Professional Engineer and/or Land Surveyor

Edgar L. Risenhoover

Certificate No. 5979

Edgar L. Risenhoover, L.S.



Existing Road
Access Road *none*

DUGAN PRODUCTION CORP.
Kinsale #1