

UNITED STATES
DEPARTMENT OF THE INTERIOR
GEOLOGICAL SURVEY

SUBMIT IN TRIPPLICATE

(Other instructions on reverse side)

Form approved.
Budget Bureau No. 42-R1425.

30-043-20599
LEASE DESIGNATION AND SERIAL NO.

APPLICATION FOR PERMIT TO DRILL, DEEPEN, OR PLUG BACK

1A. TYPE OF WORK

DRILL ☒

DEEPEN ☐

PLUG BACK ☐

B. TYPE OF WELL

OIL WELL ☒

GAS WELL ☐

OTHER

SINGLE ZONE ☒

MULTIPLE ZONE ☐

2. NAME OF OPERATOR

Mobil Producing TX. & N.M. Inc.

3. ADDRESS OF OPERATOR

Nine Greenway Plaza, Suite 2700, Houston, TX. 77046

4. LOCATION OF WELL (Report location clearly and in accordance with any State requirements.)

At surface

990' FNL and 990' FWL, Sec. 21, T23N, R2W

At proposed prod. zone

Same as surface

14. DISTANCE IN MILES AND DIRECTION FROM NEAREST TOWN OR POST OFFICE*

15. DISTANCE FROM PROPOSED*

LOCATION TO NEAREST PROPERTY OR LEASE LINE, FT.
(Also to nearest drig. unit line, if any)

990'

(330')

18. DISTANCE FROM PROPOSED LOCATION* TO NEAREST WELL, DRILLING, COMPLETED, OR APPLIED FOR, ON THIS LEASE, FT.

10,560'±
West to #1

16. NO. OF ACRES IN LEASE

2545.93

19. PROPOSED DEPTH

9000'

17. NO. OF ACRES ASSIGNED TO THIS WELL

40

20. ROTARY OR CABLE TOOLS

Rotary

21. ELEVATIONS (Show whether DF, RT, GR, etc.)

7398' GR

22. APPROX. DATE WORK WILL START*

As soon as possible

PROPOSED CASING AND CEMENTING PROGRAM

SIZE OF HOLE	SIZE OF CASING	WEIGHT PER FOOT	SETTING DEPTH	QUANTITY OF CEMENT
15"	10-3/4"*	40.5# K-55	0-400'	1. Circulate to surface.
9-7/8" to ±3500'	5-1/2"*	17# K-55	0-900'	2. Circulate to surface in two
7-7/8" to TD		15.5# K-55	900'-6900'	stages. DV tool set at
*All casing will be new.		17# K-55	6900'-8600'	±4300'.

CEMENTING PROGRAM

1. Class B with 2% CaCl₂

2. 1st-Lead: Class B + 4% gel + 1/4#/sx FC; Tail: Class B + 1/4#/sx FC

2nd-Lead: Howco Lite + 12-1/2#/sx gelsomite; Tail: Class C + 1/4#/sx FC

MUD PROGRAM

Depth	Type of Mud	Weight	Viscosity	PH	Water Loss
0'-400'	Spud Mud	9.0-9.2	35-45	9+	N.C.
400'-8600'	Fresh gel w/10% oil	8.8	35-40	9+	10 cc's

BLOWOUT PREVENTER PROGRAM

See attachment

LOGGING PROGRAM:

Type	Depth
SP-IE	Surface Casing to TD
GR-CND	Surface Casing to TD
BHC-Sonic	Surface Casing to TD
Dipmeter	3000' to TD

IN ABOVE SPACE DESCRIBE PROPOSED PROGRAM: If proposal is to deepen or plug back, give data on present productive zone and proposed new productive zone. If proposal is to drill or deepen directionally, give pertinent data on subsurface locations and measured and true vertical depths. Give blowout preventer program, if any.

34. *W.D. Simon* for A.D. Bond TITLE Regulatory Engineering Coordinator II DATE October 2, 1981

(This space for Federal or State office use)

PERMIT NO.

APPROVAL DATE

APPROVED BY

Dean Elliott

TITLE

For

ACTING SUPERVISOR

DATE

OCT 11 1981

CONDITIONS OF APPROVAL, IF ANY:

ok

*See Instructions On Reverse Side

**NEW MEXICO OIL CONSERVATION COMMISSION
WELL LOCATION AND ACREAGE DEDICATION PLAT**

Form C-102
Supersedes C-128
Effective 1-1-65

All distances must be from the outer boundaries of the Section.

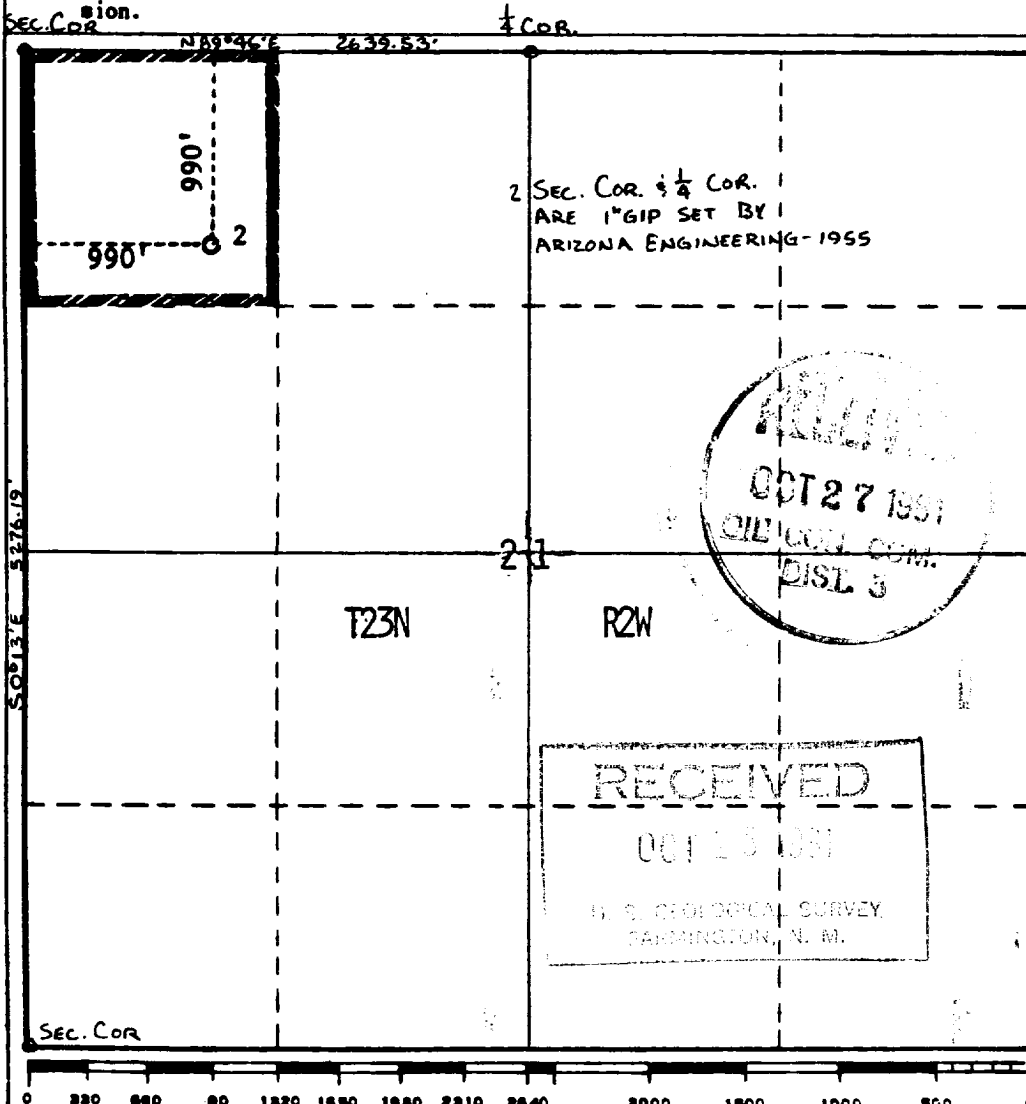
Operator Mobil Producing TX. & N.M. Inc.			Lease Jicarilla L		Well No. 2
Unit Letter D	Section 21	Township 23N	Range 2W	County Sandoval	
Actual Footage Location of Well:					
990 feet from the North line and		990 feet from the West line			
Ground Level Elev. 7398'	Producing Formation Entrada	Pool Wildcat	Dedicated Acreage: 40 Acres		

1. Outline the acreage dedicated to the subject well by colored pencil or hachure marks on the plat below.
2. If more than one lease is dedicated to the well, outline each and identify the ownership thereof (both as to working interest and royalty).
3. If more than one lease of different ownership is dedicated to the well, have the interests of all owners been consolidated by communitization, unitization, force-pooling, etc?

☐ Yes ☐ No If answer is "yes," type of consolidation _____

If answer is "no," list the owners and tract descriptions which have actually been consolidated. (Use reverse side of this form if necessary.) _____

No allowable will be assigned to the well until all interests have been consolidated (by communitization, unitization, forced-pooling, or otherwise) or until a non-standard unit, eliminating such interests, has been approved by the Commission.



CERTIFICATION

I hereby certify that the information contained herein is true and complete to the best of my knowledge and belief.

A.D. Bond
Name
A.D. Bond
Position **Regulatory Engineering Coordinator II**
Company **Mobil Producing TX. & N.M. Inc.**

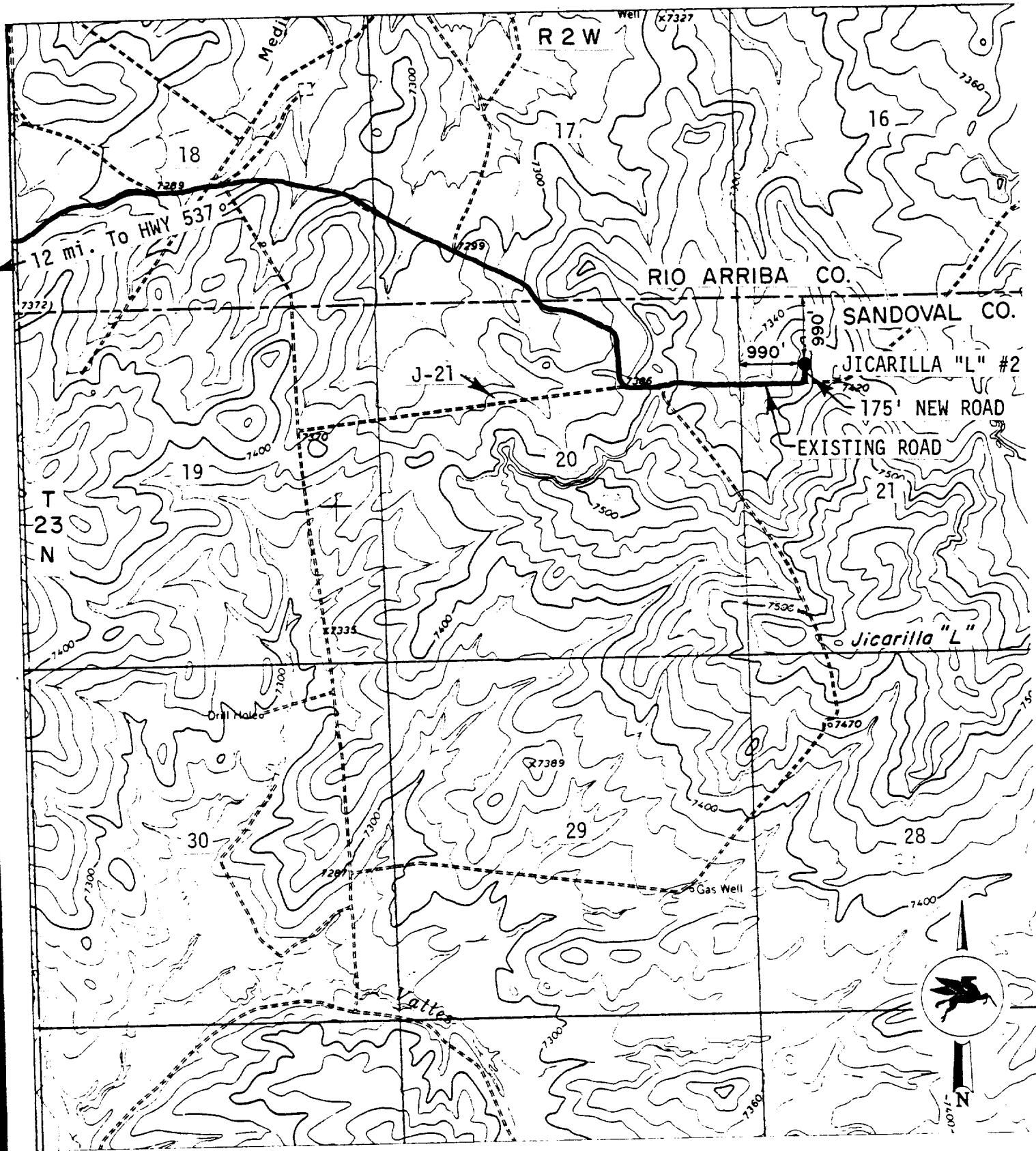
Date
October 2, 1981

I hereby certify that the well location shown on this plat was plotted from field notes of actual surveys made by me or under my supervision, and that the same is true and correct to the best of my knowledge and belief.

H.A. Carson, Jr.
Date Surveyed
September 29, 1981
Registered Professional Engineer and/or Land Surveyor

H.A. Carson, Jr.
Certificate No.

5063



Mobil Producing
Texas & New Mexico Inc.

MAP "B"
JICARILLA AREA
VICINITY PLAT
SANDOVAL CO., N.MEXICO

Scale 1" = 2000'

Date 10-2-81
Drawn J.W.J.
Checked
Approved
Revised