

UNITED STATES
DEPARTMENT OF THE INTERIOR
GEOLOGICAL SURVEY

APPLICATION FOR PERMIT TO DRILL, DEEPEN OR PLUG BACK

1a. TYPE OF WORK

DRILL ☒DEEPEN ☐

b. TYPE OF WELL

OIL
WELL ☒GAS
WELL ☐OTHER ☐SINGLE
ZONE ☐MULTIPLE
ZONE ☐

2. NAME OF OPERATOR

JACK A. COLE

3. ADDRESS OF OPERATOR

P. O. Box 191 Farminston, N.M. 87401

4. LOCATION OF WELL (Report location clearly and in accordance with any State requirements.)*

At surface

1850' FNL, 1850' FEL

At proposed prod. zone

Same

14. DISTANCE IN MILES AND DIRECTION FROM NEAREST TOWN OR POST OFFICE*

32 miles Northwest of Cuba, New Mexico

15. DISTANCE FROM PROPOSED*

LOCATION TO NEAREST
PROPERTY OR LEASE LINE, FT.
(Also to nearest drlg. unit line, if any)

1850'

16. NO. OF ACRES IN LEASE

2541

17. NO. OF ACRES ASSIGNED
TO THIS WELL

160

18. DISTANCE FROM PROPOSED LOCATION*

TO NEAREST WELL, DRILLING, COMPLETED,
OR APPLIED FOR, ON THIS LEASE, FT.

2600'

19. PROPOSED DEPTH

7200'

20. ROTARY OR CABLE TOOLS

Rotary

21. ELEVATIONS (Show whether DF, RT, GR, etc.)

7229' G.L.

22. APPROX. DATE WORK WILL START*

February 1, 1982

23.

PROPOSED CASING AND CEMENTING PROGRAM

| SIZE OF HOLE | SIZE OF CASING | WEIGHT PER FOOT | SETTING DEPTH | QUANTITY OF CEMENT |
|--------------|----------------|-----------------|---------------|----------------------------|
| 12-1/4" | 8-5/8" | 24.0 | 250' | 250 sacks - to surface |
| 7-7/8" | 4-1/2" | 10.50 & 11.60 | 7200' | 370 sacks-140 sacks, 2 sta |

All producing intervals in Dakota Formation will be perforated and stimulated as necessary.

EXHIBITS

"A" - Location and Elevation Plat

"B" - Ten Point Compliance Program

"C" - Blowout Preventer Diagram

"D" - Multi-Point Requirements of A.P.D.

"E" - Access Road to Location

"F" - Radium Map of Field

"G" - Drill Rig Layout

"H" - Fracturing Program Layout

"I" - Location Profile

The gas for this well is committed.

The NE/4, Section 11 is dedicated to this well.

IN ABOVE SPACE DESCRIBE PROPOSED PROGRAM: If proposal is to deepen or plug back, give data on present productive zone and proposed new productive zone. If proposal is to drill or deepen directionally, give pertinent data on subsurface locations and measured and true vertical depths. Give blowout preventer program, if any.

24. FOR: JACK A. COLE
SIGNED: Ewell N. Walsh, P.E.
(This space for Federal or State office use)

ORIGINAL SIGNED BY
EWELL N. WALSH

President, Walsh Engineering

TITLE & Production Corp.

DATE 12/4/81

PERMIT NO.

APPROVAL DATE

(Orig. Sgd.) RAYMOND W. VINYARD

RAYMOND W. VINYARD
ACTING DISTRICT SUPERVISOR

APPROVED BY

TITLE

DATE

CONDITIONS OF APPROVAL, IF ANY:

*See Instructions On Reverse Side

NM000

All distances must be from the outer boundaries of the Section.

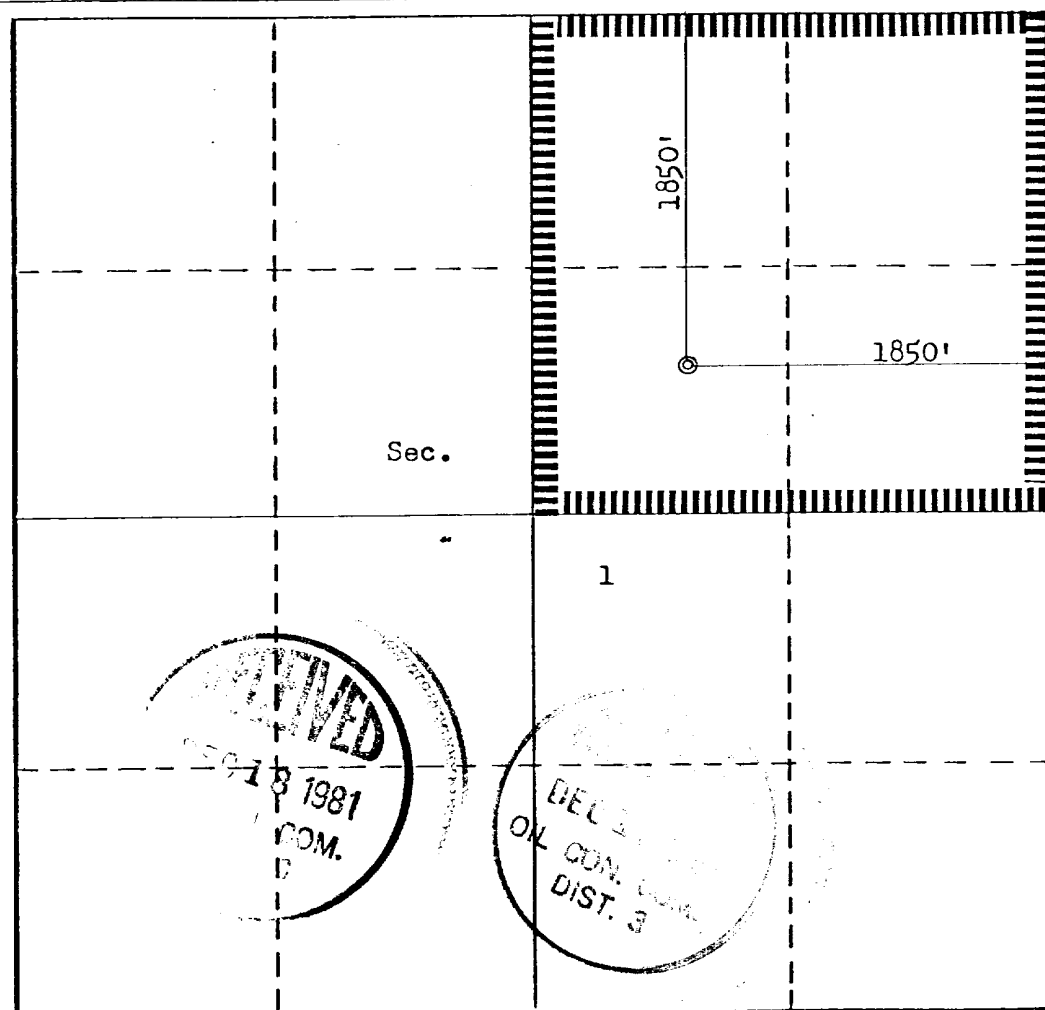
| | | | | | |
|---|--------------------------------------|--|--|---------------------------|----------------------|
| Operator JACK A. COLE | | | Lease CHACON AMIGOS | | Well No. 8 |
| Unit Letter G | Section 1 | Township 22N | Range 3W | County Sandoval | |
| Actual Footage Location of Well: | | | | | |
| 1850 feet from the North line and | | 1850 feet from the East line | | | |
| Ground Level Elev. 7229 | Producing Formation Dakota | Pool Chacon Dakota Associated | Dedicated Acreage: 160 Acres | | |

1. Outline the acreage dedicated to the subject well by colored pencil or hatchure marks on the plat below.
2. If more than one lease is dedicated to the well, outline each and identify the ownership thereof (both as to working interest and royalty).
3. If more than one lease of different ownership is dedicated to the well, have the interests of all owners been consolidated by communitization, unitization, force-pooling, etc?

☐ Yes ☐ No If answer is "yes," type of consolidation --

If answer is "no," list the owners and tract descriptions which have actually been consolidated. (Use reverse side of this form if necessary.)

No allowable will be assigned to the well until all interests have been consolidated (by communitization, unitization, forced-pooling, or otherwise) or until a non-standard unit, eliminating such interests, has been approved by the Commission.



CERTIFICATION

I hereby certify that the information contained herein is true and complete to the best of my knowledge and belief.

FOR: **JACK A. COLE**

EWELL N. WALSH
Name **EWELL N. Walsh, P.E.**
Position **President**

Walsh Engineering & Prod
Company
Corporation

Date
December 4, 1981

I hereby certify that the well location shown on this plat was plotted from field notes of actual surveys made by me or under my supervision, and that the same is true and correct to the best of my knowledge and belief.

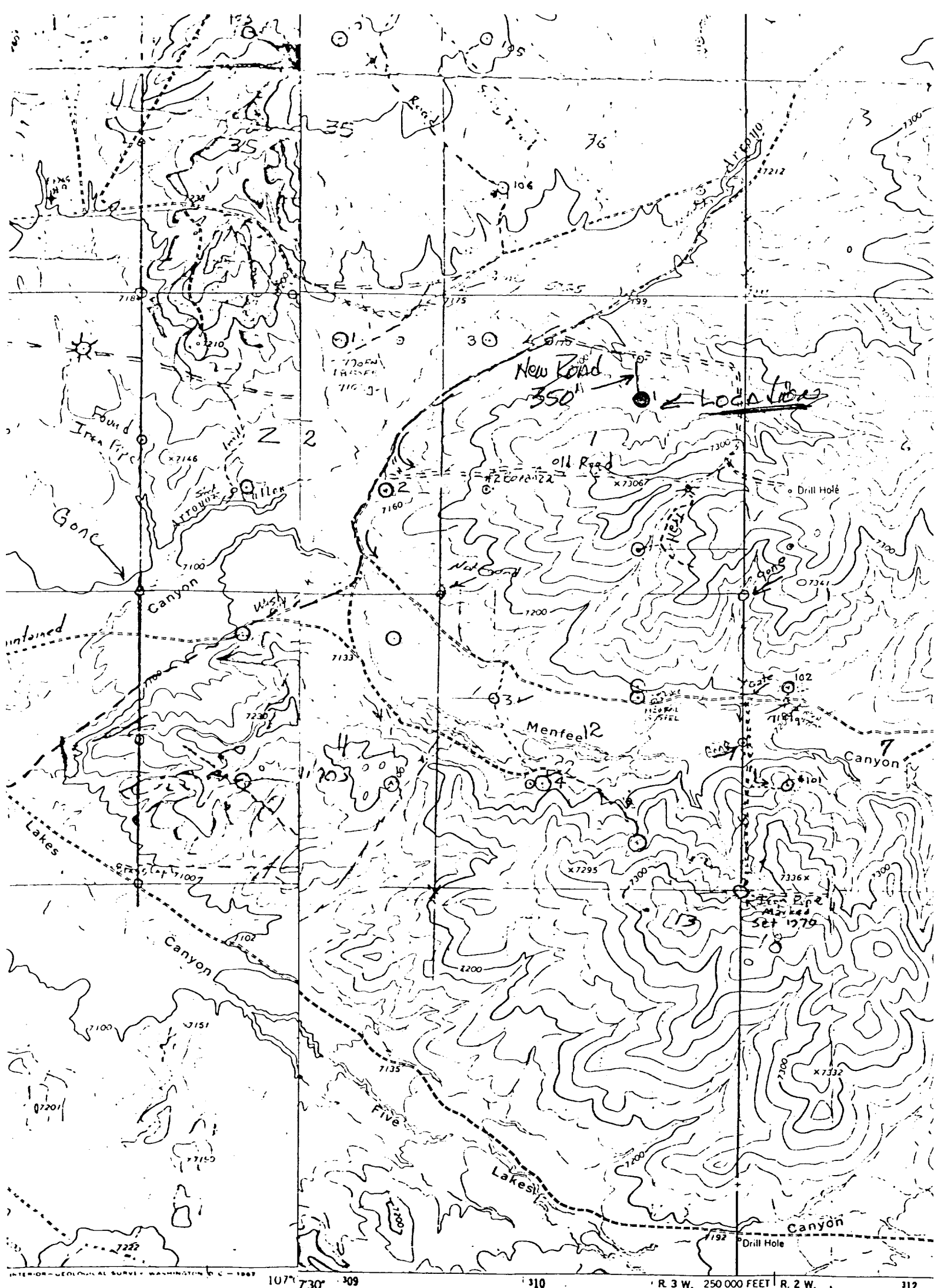
Date Surveyed

October 18, 1981

Registered Professional Engineer and/or Land Surveyor

Fred B. Kerr Jr.

Certificate No.
3950



ROAD CLASSIFICATION

— Light-duty

- - - Unimproved dirt

○ State Route

Maped, edited, and published by the Geological Survey

Control by USGS and USC&GS

Topography by photogrammetric methods from aerial photographs taken 1963. Field checked 1967

EXHIBIT "E"

Vicinity Map for

JACK A. COLE #8 CHACON AMIGOS

1850'FNL 1850'FEL Sec. 1-T22N-R3W

SANDOVAL COUNTY, NEW MEXICO

E LAKES CANYON NW. 1

1963

Entire area lies within the boundary of the Jicarilla Apache Indian Reservation

UTM GRID AND 1963 MAGNETIC NORTH DECLINATION AT CENTER OF SHEET