

UNITED STATES
DEPARTMENT OF THE INTERIOR
GEOLOGICAL SURVEY

APPLICATION FOR PERMIT TO DRILL, DEEPEN, OR PLUG BACK

1a. TYPE OF WORK

DRILL ☒DEEPEN ☐PLUG BACK ☐

b. TYPE OF WELL

OIL
WELL ☐GAS
WELL ☒OTHER ☐SINGLE
ZONE ☐MULTIPLE
ZONE ☐

2. NAME OF OPERATOR

DUGAN PRODUCTION CORP.

3. ADDRESS OF OPERATOR

P O Box 208, Farmington, NM 87401

4. LOCATION OF WELL (Report location clearly and in accordance with any State requirements.*)
At surface

1850' FNL - 790' FEL

At proposed prod. zone

14. DISTANCE IN MILES AND DIRECTION FROM NEAREST TOWN OR POST OFFICE*

6 miles east of Cuba, NM

15. DISTANCE FROM PROPOSED*

LOCATION TO NEAREST
PROPERTY OR LEASE LINE, FT.
(Also to nearest drlg. unit line, if any)

790'

16. NO. OF ACRES IN LEASE

2480

17. NO. OF ACRES ASSIGNED
TO THIS WELL

160

18. DISTANCE FROM PROPOSED LOCATION*
TO NEAREST WELL, DRILLING, COMPLETED,
OR APPLIED FOR, ON THIS LEASE, FT.

2000'

19. PROPOSED DEPTH

1650'

20. ROTARY OR CABLE TOOLS

Rotary

21. ELEVATIONS (Show whether DF, RT, GR, etc.)

7060'

22. APPROX. DATE WORK WILL START*

12-30-81

23. PROPOSED CASING AND CEMENTING PROGRAM

SIZE OF HOLE	SIZE OF CASING	WEIGHT PER FOOT	SETTING DEPTH	QUANTITY OF CEMENT
8-3/4"	7"	20#	100'	35 sx
5-1/2"	2-7/8"	6.4#	1650'	198 cu.ft. slurry

Plan to drill with as little mud as possible to set surface pipe at 100'. Then will drill with as little gel and mud as possible (5 1/2" hole) using the slim hole technique to 1650' TD. Will run IES logs; if lucrative, will run 2-7/8" casing, cement to surface, perf, frac, clean out after frac, and complete the well with 1 1/4" tubing.

NMRB REQUIREMENT: GAS NOT DEDICATED

IN ABOVE SPACE DESCRIBE PROPOSED PROGRAM: If proposal is to deepen or plug back, give data on present productive zone and proposed new productive zone. If proposal is to drill or deepen directionally, give pertinent data on subsurface conditions and measured and true vertical depths. Give blowout preventer program, if any.

24.

SIGNED Thomas A. Dugan TITLE Petroleum Engineer DATE 12-24-81

(This space for Federal or State office use)

PERMIT NO. _____

APPROVAL DATE _____

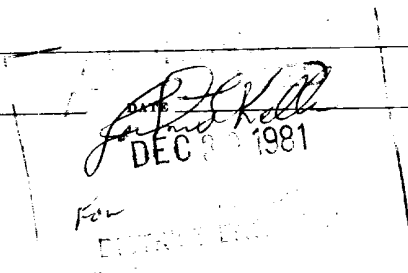
APPROVED BY _____

TITLE _____

CONDITIONS OF APPROVAL, IF ANY:

This action is subject to administrative
appeal pursuant to 30 CFR 290.
DRILLING OPERATIONS AUTHORIZED ARE
SUBJECT TO COMPLIANCE WITH ATTACHED
"GENERAL REQUIREMENTS"

111000



OIL CONSERVATION DIVISION

P. O. BOX 2088

Form C-102
Revised 10-1-78STATE OF NEW MEXICO
ENERGY AND MINERALS DEPARTMENT

SANTA FE, NEW MEXICO 87501

All distances must be from the outer boundaries of the Section.

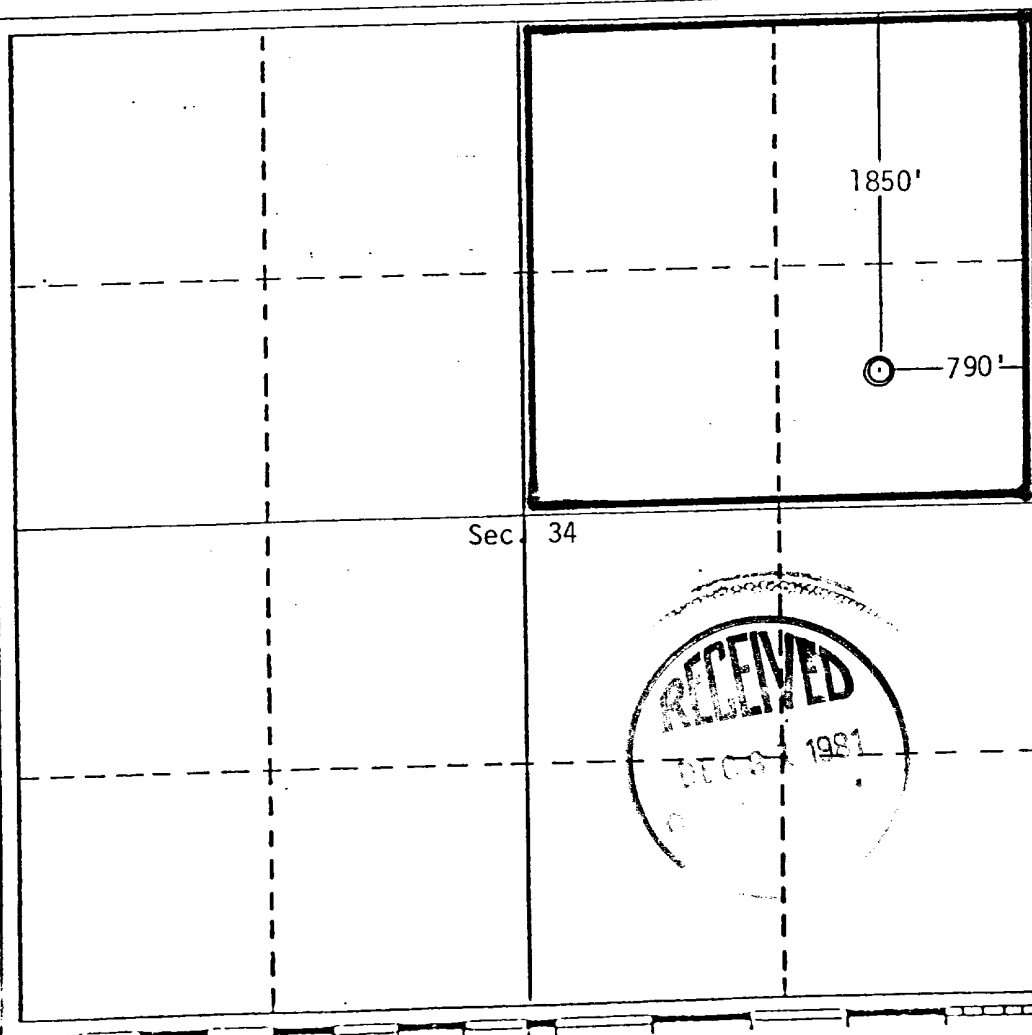
Operator DUGAN PRODUCTION CORP.		Lease Husky Federal		Well No. 1
Unit Letter H	Section 34	Township 21 North	Range 4 West	County Sandoval
Actual Footage Location of Well: 1850 feet from the North line and 790 feet from the East line				
Ground Level Elev. 7060'	Producing Formation Pictured Cliffs		Pool Undesignated P.C.	Dedicated Acreage: 160 Acres

1. Outline the acreage dedicated to the subject well by colored pencil or hatchure marks on the plat below.
2. If more than one lease is dedicated to the well, outline each and identify the ownership thereof (both as to working interest and royalty).
3. If more than one lease of different ownership is dedicated to the well, have the interests of all owners been consolidated by communitization, unitization, force-pooling, etc?

☐ Yes ☐ No If answer is "yes," type of consolidation _____

If answer is "no," list the owners and tract descriptions which have actually been consolidated. (Use reverse side of this form if necessary.) _____

No allowable will be assigned to the well until all interests have been consolidated (by communitization, unitization, forced-pooling, or otherwise) or until a non-standard unit, eliminating such interests, has been approved by the Division.



CERTIFICATION

I hereby certify that the information contained herein is true and complete to the best of my knowledge and belief.

Jerome P. McHugh Jr.
Name

Jerome P. McHugh Jr.

Position
Landman

Company
Dugan Production Corp.

Date
12-23-81

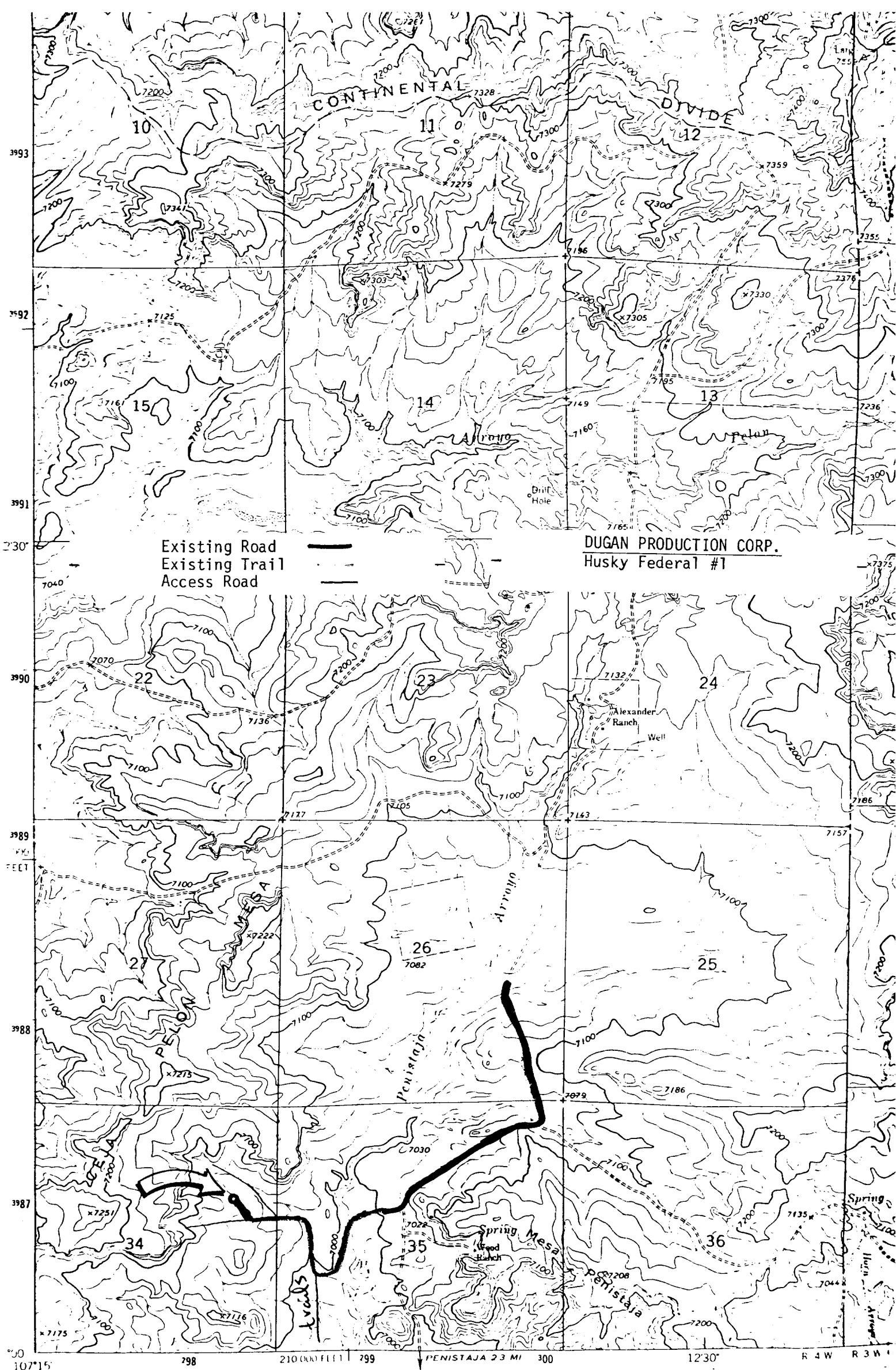
I hereby certify that the well location shown on this plat was plotted from field notes of actual surveys made by me or under my supervision, and that the same is true and correct to the best of my knowledge and belief.

Thomas A. Dugan
Date Surveyed
12-23-81

Registered Professional Engineer
and/or Land Surveyor

Thomas A. Dugan

Certificate No.
#2373



Mapped, edited, and published by the Geological Survey

Control by USGS and USC&GS

Topography by photogrammetric methods from aerial photographs taken 1963 Field checked 1963

