

UNITED STATES
DEPARTMENT OF THE INTERIOR
GEOLOGICAL SURVEY

APPLICATION FOR PERMIT TO DRILL, DEEPEN, OR PLUG BACK

1a. TYPE OF WORK

DRILL ☒

DEEPEN ☐

PLUG BACK ☐

b. TYPE OF WELL

OIL
WELL ☐

GAS
WELL ☒

OTHER

SINGLE
ZONE ☒

MULTIPLE
ZONE ☐

2. NAME OF OPERATOR

Robert L. Bayless

3. ADDRESS OF OPERATOR

P.O. Box 1541, Farmington, NM 87401

4. LOCATION OF WELL (Report location clearly and in accordance with any State law or rule)

At surface
1850' FNL & 1660' FWL

At proposed prod. zone
same

14. DISTANCE IN MILES AND DIRECTION FROM NEAREST TOWN OR POST OFFICE*

15. DISTANCE FROM PROPOSED*

LOCATION TO NEAREST
PROPERTY OR LEASE LINE, FT.
(Also to nearest drig. unit line, if any)

18. DISTANCE FROM PROPOSED LOCATION*

TO NEAREST WELL, DRILLING, COMPLETED,
OR APPLIED FOR, ON THIS LEASE, FT.

21. ELEVATIONS (Show whether DF, RT, GR, etc.)

7001' GL

23.

PROPOSED CASING AND CEMENTING PROGRAM

SIZE OF HOLE	SIZE OF CASING	WEIGHT PER FOOT	SETTING DEPTH	QUANTITY OF CEMENT
9"	7"	23#	90'	30 sacks circulated to surface
6 1/4"	2-7/8"	6.5#	2550'	150 sacks

Will drill 9" hole to 90' and set 90' of 7", 23#, J-55 used casing with 30 sacks Class "H" cement, circulated to surface. Will drill 6 1/4" hole to 2550 feet and run 2550 feet of 2-7/8", EUE, J-55 used casing and cement with 150 sacks Class "H" cement with 2% D-79 circulated to above Ojo Alamo. Circulating medium will be clear water, natural mud and water loss control additives. No abnormal pressures or temperatures are anticipated. Will run Induction and Density logs. Blowout preventer schematic is attached. The gas from this formation is dedicated to a gas contract.

ESTIMATED TOPS

Surface Formation: Clays & Sand

1764': Ojo Alamo

2194': Fruitland

2394': Pic. Cliffs

IN ABOVE SPACE DESCRIBE PROPOSED PROGRAM: If proposal is to deepen or plug back, give data on present productive zone and proposed new productive zone. If proposal is to drill or deepen directionally, give pertinent data on subsurface locations and measured and true vertical depths. Give blowout preventer program, if any.

24.

SIGNED

TITLE

Operator

DATE

Feb. 12, 1982

(This space for Federal or State office use)

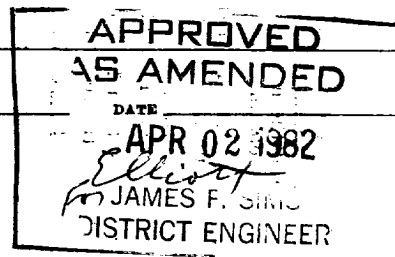
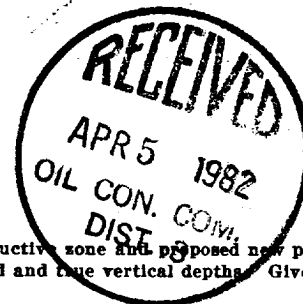
PERMIT NO.

APPROVAL DATE

APPROVED BY

TITLE

CONDITIONS OF APPROVAL, IF ANY:



NMOCC

OIL CONSERVATION DIVISION

STATE OF NEW MEXICO
ENERGY AND MINERALS DEPARTMENTP. O. BOX 2088
SANTA FE, NEW MEXICO 87501Form C-107
Revised 10-1-78

All distances must be from the outer boundaries of the Section.

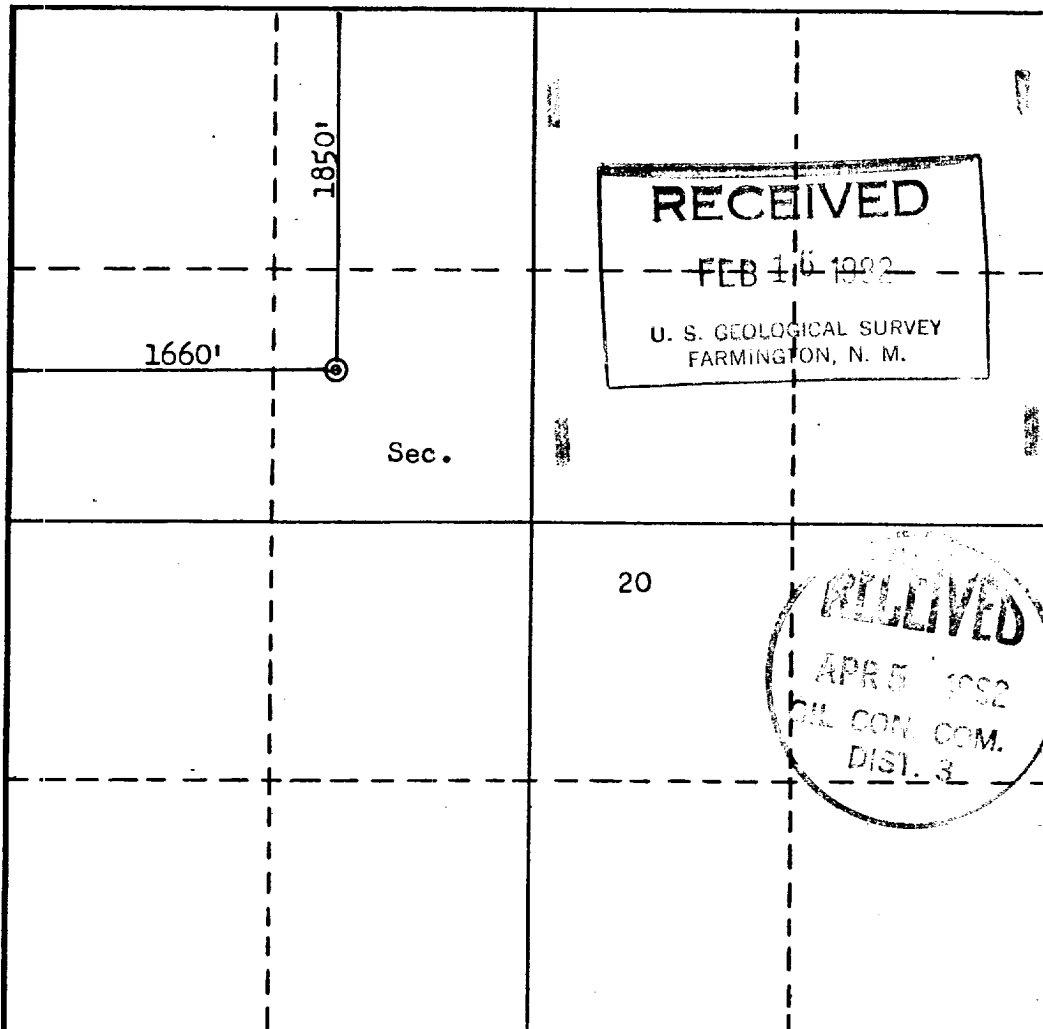
Operator R. L. BAYLESS			Lease AXI 1471 Apache P		Well No. 5
Unit Letter F	Section 20	Township 23N	Range 4W	County Sandoval	
Actual Footage Location of Well: 1850 feet from the North line and 1660 feet from the West line					
Ground Level Elev. 7001	Producing Formation Pictured Cliffs	Pool Ballard Pic. Cliffs		Dedicated Acreage 160 Acres	

1. Outline the acreage dedicated to the subject well by colored pencil or hatchure marks on the plat below.
2. If more than one lease is dedicated to the well, outline each and identify the ownership thereof (both as to working interest and royalty).
3. If more than one lease of different ownership is dedicated to the well, have the interests of all owners been consolidated by communitization, unitization, force-pooling, etc?

☐ Yes ☐ No If answer is "yes," type of consolidation _____

If answer is "no," list the owners and tract descriptions which have actually been consolidated. (Use reverse side of this form if necessary.) _____

No allowable will be assigned to the well until all interests have been consolidated (by communitization, unitization, forced-pooling, or otherwise) or until a non-standard unit, eliminating such interests, has been approved by the Commission.



CERTIFICATION

I hereby certify that the information contained herein is true and complete to the best of my knowledge and belief.

Name
Robert L. Bayless

Position
Owner

Company
Robert L. Bayless

Date
Feb. 12, 1982

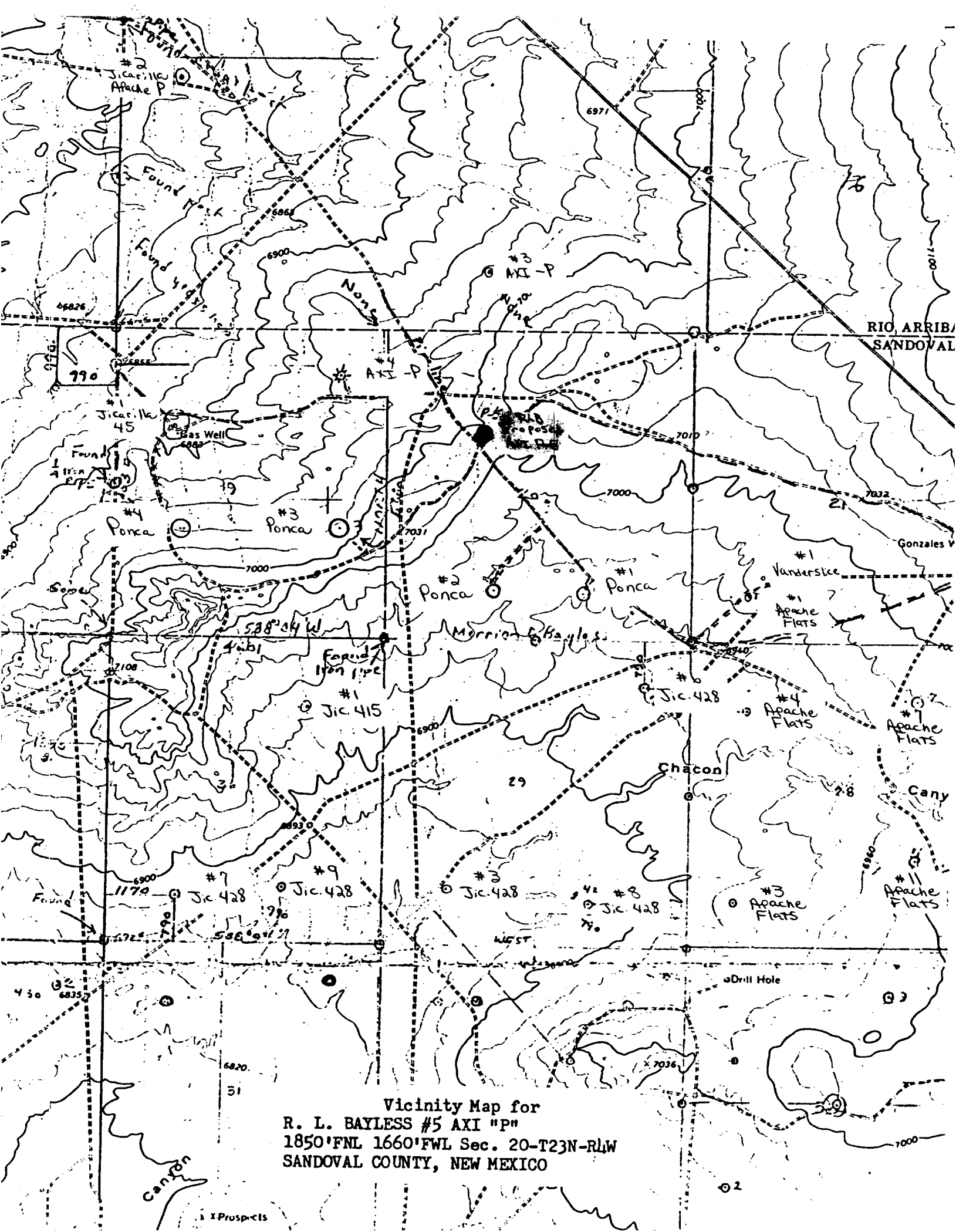
I hereby certify that the well location shown on this plat was plotted from field notes of actual surveys made by me or under my supervision, and that the same is true and correct to the best of my knowledge and belief.

Date Surveyed
February 12, 1982

Registered Professional Engineer
and/or Land Surveyor
Fred B. Kerr, Jr.

Certificate No.
3950

0 330 660 990 1320 1650 1980 2310 2640 2000 1800 1000 800 0



Vicinity Map for
R. L. BAYLESS #5 AXI "P"
1850'FNL 1660'FWL Sec. 20-T23N-RLW
SANDOVAL COUNTY, NEW MEXICO