

UNITED STATES  
DEPARTMENT OF THE INTERIOR  
GEOLOGICAL SURVEY

30-043-20639

## APPLICATION FOR PERMIT TO DRILL, DEEPEN, OR PLUG BACK

## 1a. TYPE OF WORK

DRILL ☒DEEPEN ☐PLUG BACK ☐

## b. TYPE OF WELL

OIL  
WELL ☒GAS  
WELL ☐OTHER ☐SINGLE  
ZONE ☐MULTIPLE  
ZONE ☒

## 2. NAME OF OPERATOR

DAVE M. THOMAS, JR.

## 3. ADDRESS OF OPERATOR

P. O. Box 2026 Farmington, New Mexico 87401

## 4. LOCATION OF WELL (Report location clearly and in accordance with applicable requirements.)

At surface

990'FSL, 1850'FEL

At proposed prod. zone

Same

## 14. DISTANCE IN MILES AND DIRECTION FROM NEAREST TOWN OR POST OFFICE

32 miles Northwest of Cuba, New Mexico

## 15. DISTANCE FROM PROPOSED\*

LOCATION TO NEAREST  
PROPERTY OR LEASE LINE, FT.

990'

(Also to nearest drlg. unit line, if any)

## 18. DISTANCE FROM PROPOSED LOCATION\*

TO NEAREST WELL, DRILLING, COMPLETED,  
OR APPLIED FOR, ON THIS LEASE, FT.

1300'

## 16. NO. OF ACRES IN LEASE

2240.91

## 19. PROPOSED DEPTH

7340'

## 17. NO. OF ACRES ASSIGNED

TO THIS WELL

160.11

## 20. ROTARY OR CABLE TOOLS

Rotary

## 21. ELEVATIONS (Show whether DF, RT, GR, etc.)

7192'G.L.

## 22. APPROX. DATE WORK WILL START\*

June 15, 1982

## 23.

## PROPOSED CASING AND CEMENTING PROGRAM

SIZE OF HOLE	SIZE OF CASING	WEIGHT PER FOOT	SETTING DEPTH	QUANTITY OF CEMENT
12-1/4"	8-5/8"	24.0	250'	295 Cuft. to surface
7-7/8"	4-1/2"	10.50&11.60	7340'	574 Cuft.-290 Cuft, 2 stage

All producing intervals in Dakota Formation will be perforated and stimulated as necessary.

## EXHIBITS

"A" Location and Elevation Plat  
"B" Ten Point Compliance Program  
"C" Blowout preventer Diagram  
"D" Multi-Point Requirements of APD

"E" Access Road to Location  
"F" Radium Map of Field  
"G" Drill Rig Layout  
"H" Fracturing Program Layout  
"I" Location Profile

The gas for this well is committed.

The SE/4, Section 36, is dedicated to this well.

IN ABOVE SPACE DESCRIBE PROPOSED PROGRAM: If proposal is to deepen or plug back, give data on present productive zone and proposed new productive zone. If proposal is to drill or deepen directionally, give pertinent data on subsurface locations and measured and true vertical depths. Give blowout preventer program, if any.

24. FOR: DAVE M. THOMAS, JR.  
ORIGINAL SIGNED BYPresident, Walsh Engr.  
& Production Corp.

SIGNED

Ewell N. Walsh, P.E.

TITLE

DATE

4/26/82

(This space for Federal or State office use)

PERMIT NO.

APPROVAL DATE

APPROVED BY

TITLE

CONDITIONS OF APPROVAL, IF ANY:

APPROVED  
AS AMENDED

DATE

APR 29 1982

JAMES F. SIMS  
DISTRICT ENGINEER

\*See Instructions On Reverse Side

NMOC

All distances must be from the outer boundaries of the Section.

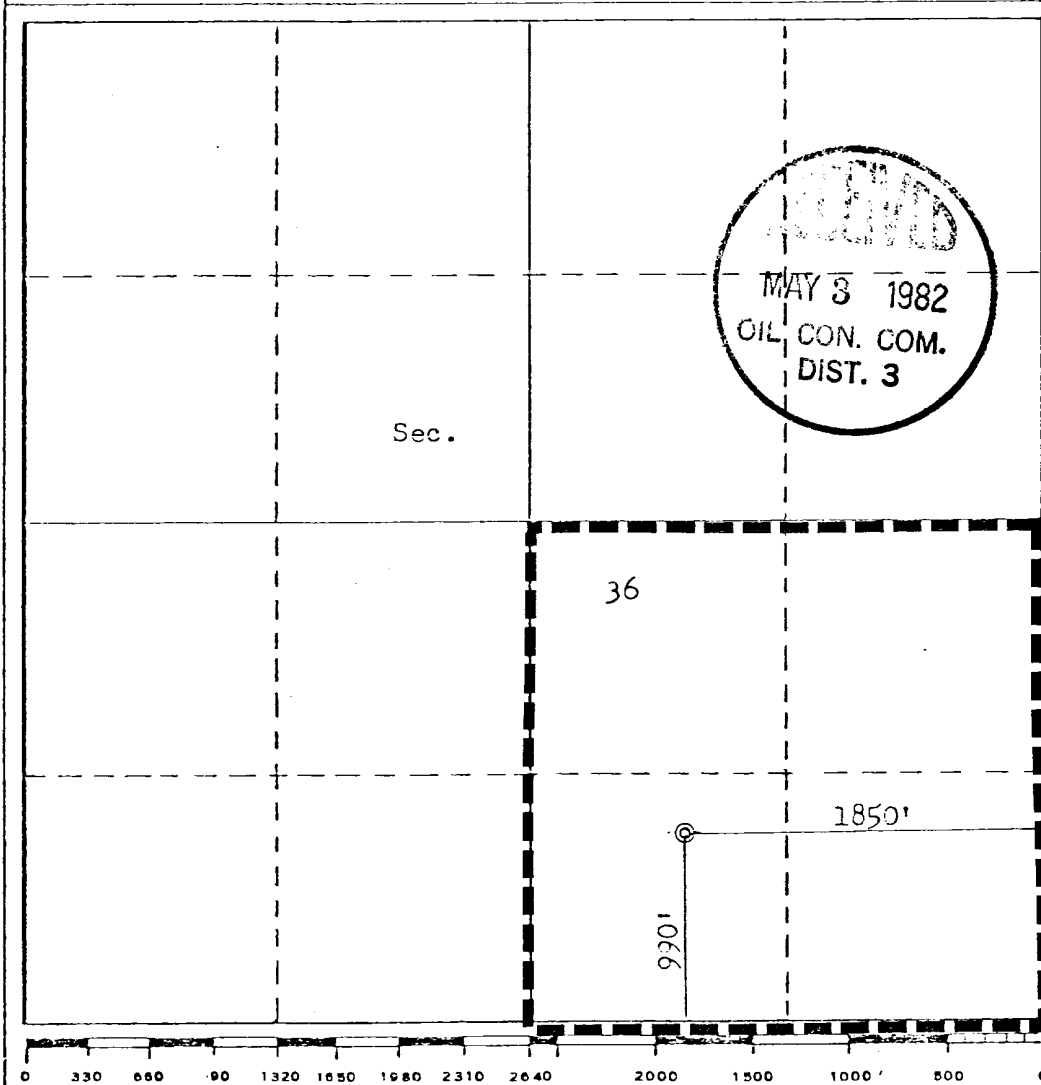
Operator <b>DAVE M. THOMAS JR.</b>		Lease <b>CHACON JICARILLA APACHE "D"</b>		Well No. <b>111</b>
Unit Letter <b>0</b>	Section <b>36</b>	Township <b>23N</b>	Range <b>3W</b>	County <b>Sandoval</b>
Actual Footage Location of Well: <b>990</b> feet from the <b>South</b> line and <b>1850</b> feet from the <b>East</b> line				
Ground Level Elev. <b>7192</b>	Producing Formation <b>Dakota</b>	Pool <b>Chacon Dakota Associated</b>	Dedicated Acreage: <b>160.11</b> Acres	

1. Outline the acreage dedicated to the subject well by colored pencil or hatchure marks on the plat below.
2. If more than one lease is dedicated to the well, outline each and identify the ownership thereof (both as to working interest and royalty).
3. If more than one lease of different ownership is dedicated to the well, have the interests of all owners been consolidated by communitization, unitization, force-pooling, etc?

☐ Yes ☐ No If answer is "yes," type of consolidation \_\_\_\_\_

If answer is "no," list the owners and tract descriptions which have actually been consolidated. (Use reverse side of this form if necessary.) \_\_\_\_\_

No allowable will be assigned to the well until all interests have been consolidated (by communitization, unitization, forced-pooling, or otherwise) or until a non-standard unit, eliminating such interests, has been approved by the Commission.



CERTIFICATION

I hereby certify that the information contained herein is true and complete to the best of my knowledge and belief.  
FOR: **DAVE M. THOMAS, JR.**  
**ORIGINAL SIGNED BY**

Name **EWELL N. WALSH**  
Ewell N. Walsh, P.E.  
Position  
President  
Company  
Walsh Engr, & Production Corp  
Date  
4/26/82

I hereby certify that the well location shown on this plat was plotted from field notes of actual surveys made by me or under my supervision, and that the same is true and correct to the best of my knowledge and belief.

Date Surveyed  
**April 26, 1982**  
Registered Professional Engineer and/or Licensed Surveyor  
**Fred B. Kerr Jr.**  
Certificate No.  
**3950**

