

UNITED STATES
DEPARTMENT OF THE INTERIOR
GEOLOGICAL SURVEY

APPLICATION FOR PERMIT TO DRILL, DEEPEN, OR PLUG BACK

1a. TYPE OF WORK

DRILL ☒DEEPEN ☐PLUG BACK ☐

b. TYPE OF WELL

OIL
WELL ☐GAS
WELL ☒

OTHER

SINGLE
BONE ☒MULTIPLE
BONE ☐

2. NAME OF OPERATOR

R.E. "Dick" Lauritsen

3. ADDRESS OF OPERATOR

P.O. Box 2364, 3005 Northridge, Santa Fe, New Mexico 87501

4. LOCATION OF WELL (Report location clearly and in accordance with any State requirements.)

At surface

1520' FNL, 790' FEL

At proposed prod. zone

14. DISTANCE IN MILES AND DIRECTION FROM NEAREST TOWN OR POST OFFICE

10 miles from 44 Store, south on Star Lake Road

15. DISTANCE FROM PROPOSED*

LOCATION TO NEAREST
PROPERTY OR LEASE LINE, FT.
(Also to nearest drlg. unit line, if any)18. DISTANCE FROM PROPOSED LOCATION*
TO NEAREST WELL, DRILLING, COMPLETED,
OR APPLIED FOR, ON THIS LEASE, FT.

N/A

16. NO. OF ACRES IN LEASE

281.47

19. PROPOSED DEPTH

2,000'

17. NO. OF ACRES ASSIGNED
TO THIS WELL

160

20. ROTARY OR CABLE TOOLS

Rotary

21. ELEVATIONS (Show whether DF, RT, GR, etc.)

6847.0 GL.

22. APPROX. DATE WORK WILL START*

June 15, 1982

23. PROPOSED CASING AND CEMENTING PROGRAM

SIZE OF HOLE	SIZE OF CASING	WEIGHT PER FOOT	SETTING DEPTH	QUANTITY OF CEMENT
12 1/4	8 5/8	28#	100'	100 sacks
7 7/8	4 1/2	9.5#	2,000'	290 sacks

Will drill 12 1/4" hole to 100' and set 100' of 8 5/8, 28# used casing with 100 sacks cement. Will drill 7 7/8 hole to 2000' and run open hole logs. If appears production will run 2000' of 4 1/2", 9.5# new casing and cement with 290 sacks. Will perforate and stimulate as required. Minimum specifications for pressure control equipment which is to be used: 10" - 900 series double ram BOP.

Estimated TopsFormation
Ojo Alamo
Picture CliffDepth
800'
1,350'

Chacra

1,725'

ContentSalt Water (some gas
Possible)
Gas, Salt water

IN ABOVE SPACE DESCRIBE PROPOSED PROGRAM: If proposal is to deepen or plug back, give data on present productive zone and proposed new productive zone. If proposal is to drill or deepen directionally, give pertinent data on subsurface locations and measured and true vertical depths. Give blowout preventer program, if any.

24.

SIGNED

R.E. Lauritsen

TITLE

Operator

DATE

5/8/82

(This space for Federal or State office use)

PERMIT NO.

APPROVED BY

CONDITIONS OF APPROVAL, IF ANY:

TITLE



DATE

JUN 01 1982

Carol B. Becker
for JAMES P. ...
DISTRICT ENGINEER

**NEW MEXICO OIL CONSERVATION COMMISSION
WELL LOCATION AND ACREAGE DEDICATION PLAT**

Form C-102
Supersedes C-128
Effective 1-1-65

All distances must be from the outer boundaries of the Section.

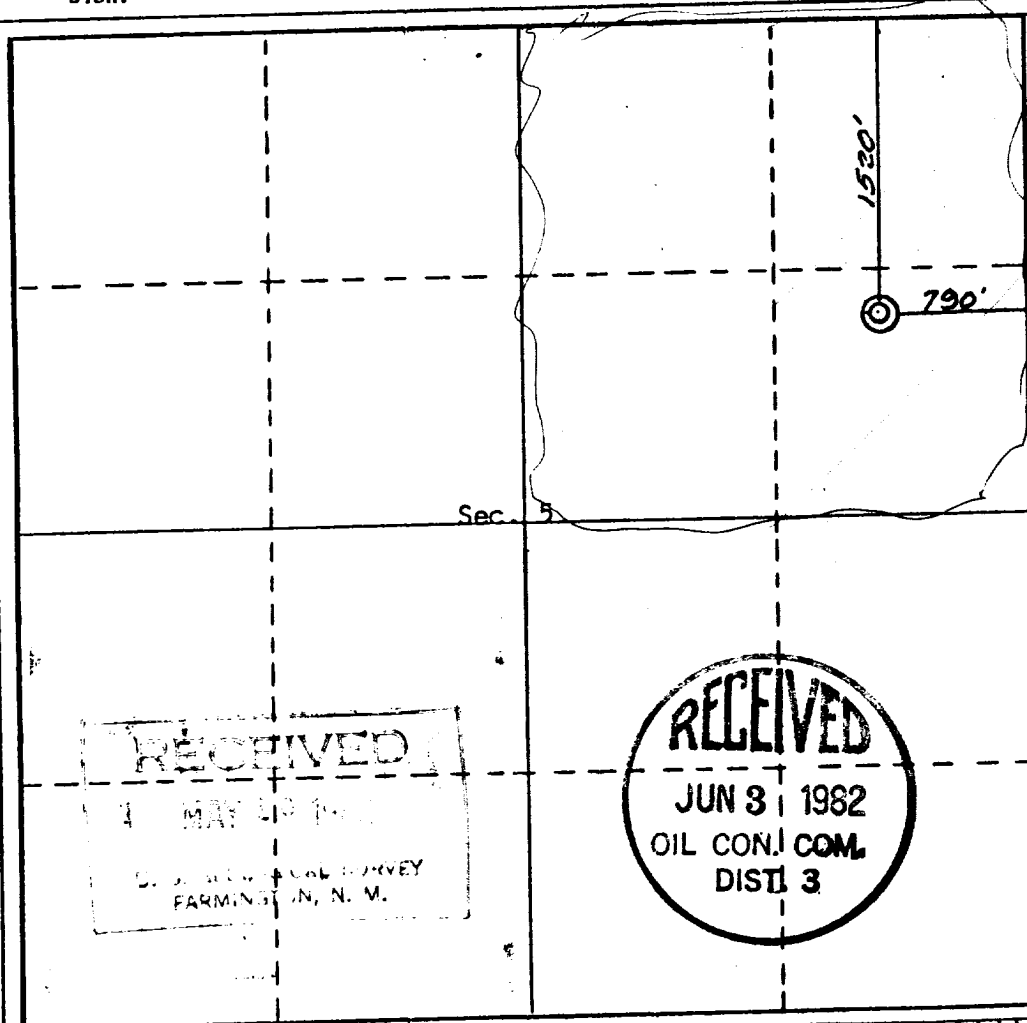
Operator R. E. LAURITSEN			Lease FEDERAL 229 5		Well No. 1
Unit Letter H	Section 5	Township 22 NORTH	Range 7 WEST	County SANDOVAL	
Actual Footage Location of Well: <div style="display: flex; justify-content: space-between;"> 1520 feet from the NORTH line and 790 feet from the EAST line </div>					
Ground Level Elev. 6847.0	Producing Formation Chacra	Pool Undes	Dedicated Acreage: 281.47 160 Acres		

1. Outline the acreage dedicated to the subject well by colored pencil or hatchure marks on the plat below.
2. If more than one lease is dedicated to the well, outline each and identify the ownership thereof (both as to working interest and royalty).
3. If more than one lease of different ownership is dedicated to the well, have the interests of all owners been consolidated by communitization, unitization, force-pooling, etc?

☐ Yes ☐ No If answer is "yes," type of consolidation _____

If answer is "no," list the owners and tract descriptions which have actually been consolidated. (Use reverse side of this form if necessary.) _____

No allowable will be assigned to the well until all interests have been consolidated (by communitization, unitization, forced-pooling, or otherwise) or until a non-standard unit, eliminating such interests, has been approved by the Commission.



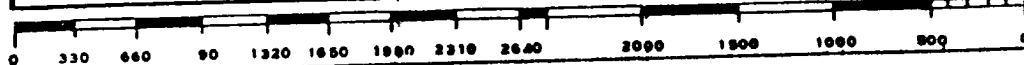
CERTIFICATION

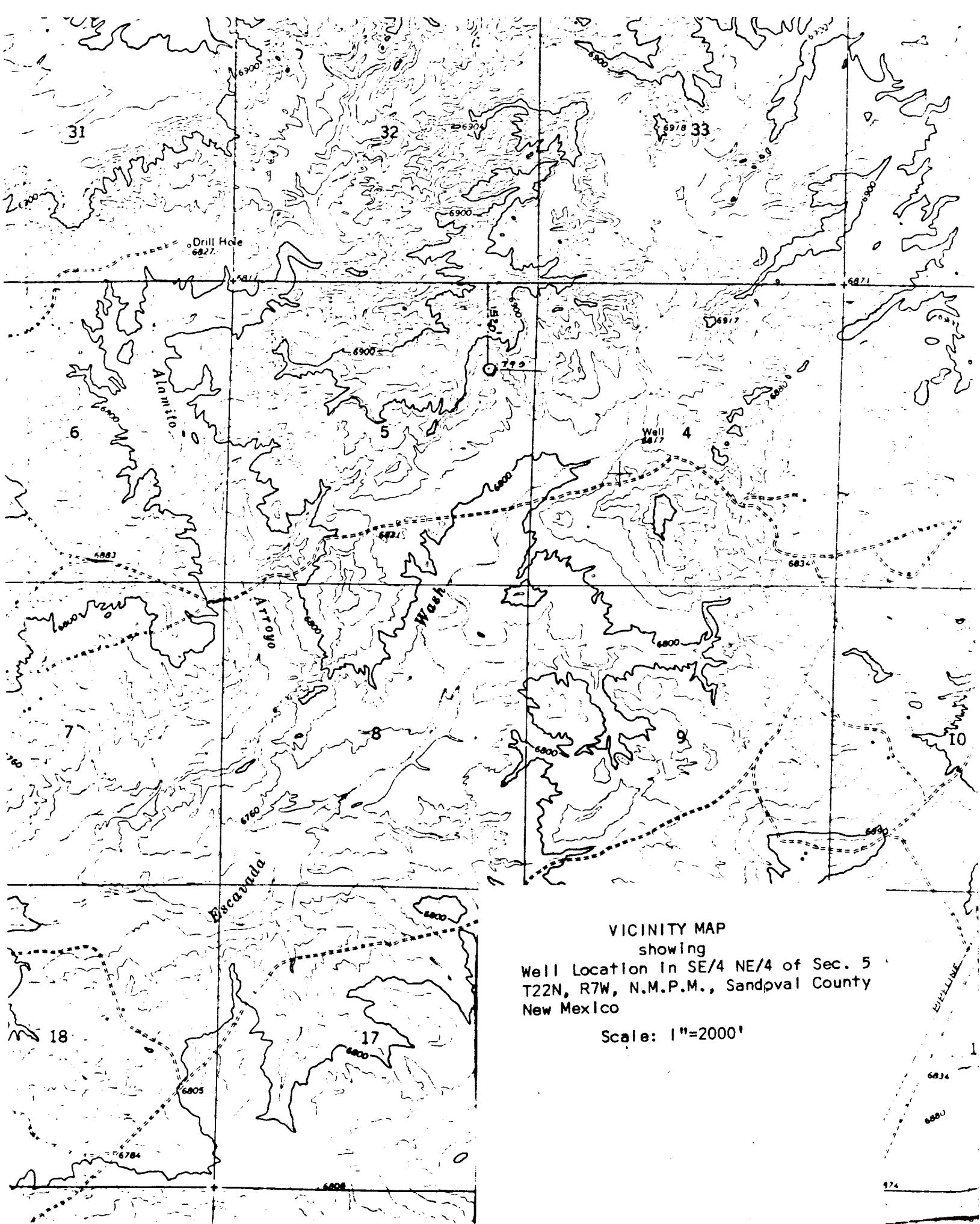
I hereby certify that the information contained herein is true and complete to the best of my knowledge and belief.

Name **Gary E. Roberts**
 Position **AGENT**
 Company **R. E. LAURITSEN DRILLING**
 Date **5-14-82**

I hereby certify that the well location shown on this plat was plotted from field notes of actual surveys made by me or under my supervision, and that the same is true and correct to the best of my knowledge and belief.

Date **May 15 1982**
 Registered Professional Engineer and/or Land Surveyor
Curtis C. Stocking
 Certificate No. **5980 LS**





VICINITY MAP
showing
Well Location in SE/4 NE/4 of Sec. 5
T22N, R7W, N.M.P.M., Sandoval County
New Mexico

Scale: 1"=2000'