

UNITED STATES
DEPARTMENT OF THE INTERIOR
GEOLOGICAL SURVEY

30-043-20648

APPLICATION FOR PERMIT TO DRILL, DEEPEN, OR PLUG BACK

1a. TYPE OF WORK

DRILL ☒DEEPEN ☐PLUG BACK ☐

b. TYPE OF WELL

OIL
WELL ☒GAS
WELL ☐OTHER ☐SINGLE
ZONE ☐MULTIPLE
ZONE ☐

2. NAME OF OPERATOR

Aztec Energy Corporation

3. ADDRESS OF OPERATOR

1206 East 20th Street, Farmington, N. M.

4. LOCATION OF WELL (Report location clearly and in accordance with any State requirements.)

At surface 790' FNL x 1850' FWL

At proposed prod. zone Same

14. DISTANCE IN MILES AND DIRECTION FROM NEAREST TOWN OR POST OFFICE*

11 Miles Southeast of Ojito New Mexico

15. DISTANCE FROM PROPOSED*

LOCATION TO NEAREST

PROPERTY OR LEASE LINE, FT.

(Also to nearest drig. unit line, if any)

790 ft

18. DISTANCE FROM PROPOSED LOCATION*

TO NEAREST WELL, DRILLING, COMPLETED,

OR APPLIED FOR, ON THIS LEASE, FT.

1580 ft.

21. ELEVATIONS (Show whether DF, RT, GR, etc.)

7077 GR

23.

PROPOSED CASING AND CEMENTING PROGRAM

SIZE OF HOLE	SIZE OF CASING	WEIGHT PER FOOT	SETTING DEPTH	QUANTITY OF CEMENT
12-1/4"	8-5/8"	24#/ft.	270 ft.	175 sx circulated
7-7/8"	4-1/2"	11.6#/ft.	6900 ft.	1100 sx

We desire to drill a 12-1/4" surface hole to approx. 270 feet and run new 8-5/8" 24#/ft. casing at this depth, using natural mud as a circulating medium.

Cement with approx. 175 sx circulated to the surface. Pressure test the casing. Drill 7-7/8" hole to approx. 6900 feet. Log the well. Run new 4-1/2" 10.5#/ft. and 11.6#/ft. casing to TD with locations for DU tools and cement volumes determined after logging. Perforate and fracture Dakota zone. Clean up well and run tubing to the producing zone. Nipple down well head. Test the well and connect to gathering system.

IN ABOVE SPACE DESCRIBE PROPOSED PROGRAM: If proposal is to deepen or plug back, give data on present productive zone and proposed new productive zone. If proposal is to drill or deepen directionally, give pertinent data on subsurface locations and measured and true vertical depths. Give blowout preventer program, if any.

24.

SIGNED

Ronnie W. Allen
Ronnie W. Allen

TITLE

Geologist

DATE

6-23-82

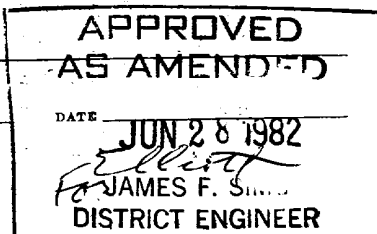
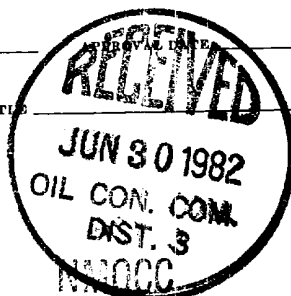
(This space for Federal or State office use)

PERMIT NO.

APPROVED BY

CONDITIONS OF APPROVAL, IF ANY:

TITLE



All distances must be from the outer boundaries of the Section.

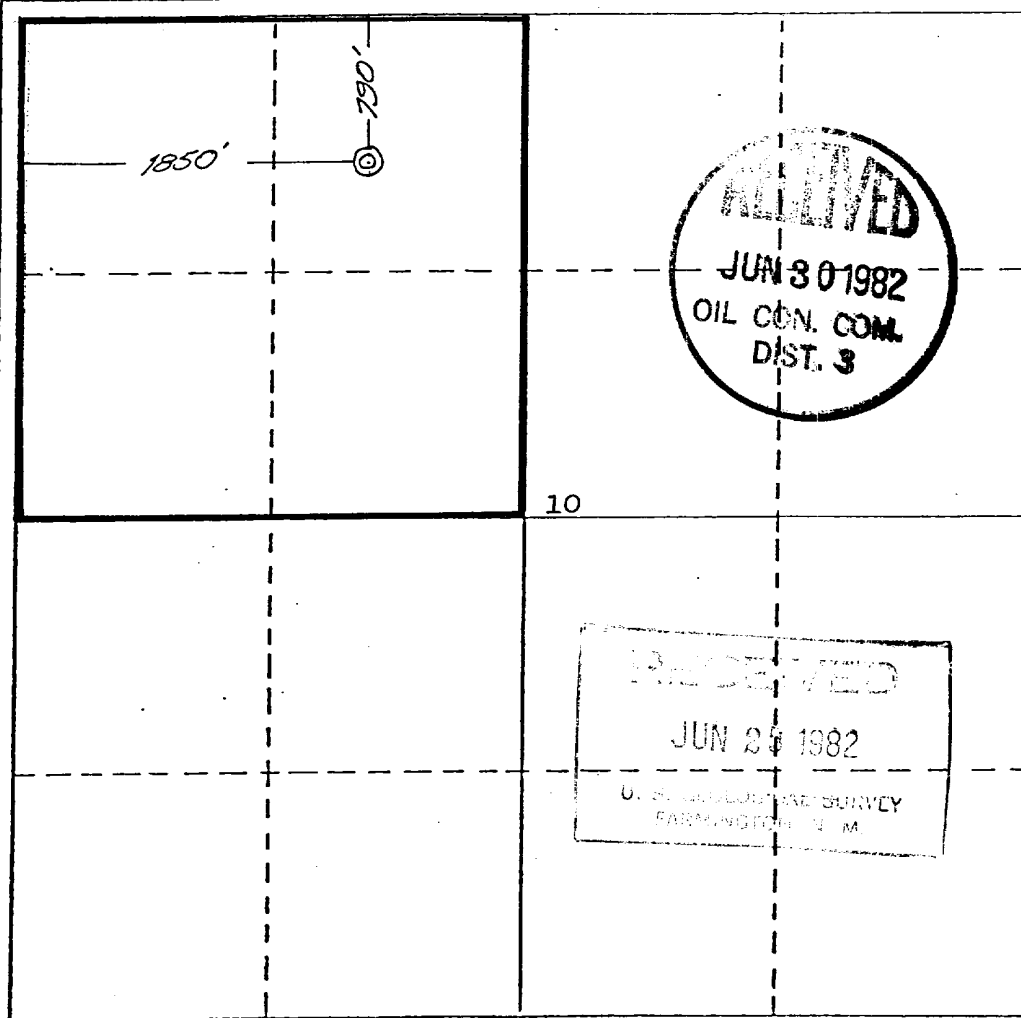
Operator AZTEC ENERGY CORPORATION		Lease JICARILLA		Well No. 4
Unit Letter C	Section 10	Township 22 NORTH	Range 3 WEST	County SANDOVAL
Actual Footage Location of Well: 790 feet from the NORTH line and 1850 feet from the WEST line				
Ground Level Elev. 7077	Producing Formation	Pool Chacon Dakota	Dedicated Acreage: 160.02 Acres	

1. Outline the acreage dedicated to the subject well by colored pencil or hatchure marks on the plat below.
2. If more than one lease is dedicated to the well, outline each and identify the ownership thereof (both as to working interest and royalty).
3. If more than one lease of different ownership is dedicated to the well, have the interests of all owners been consolidated by communitization, unitization, force-pooling, etc?

☐ Yes ☐ No If answer is "yes," type of consolidation _____

If answer is "no," list the owners and tract descriptions which have actually been consolidated. (Use reverse side of this form if necessary.) _____

No allowable will be assigned to the well until all interests have been consolidated (by communitization, unitization, forced-pooling, or otherwise) or until a non-standard unit, eliminating such interests, has been approved by the Division

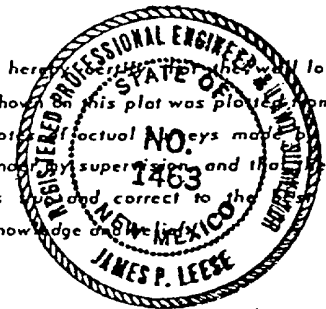


CERTIFICATION

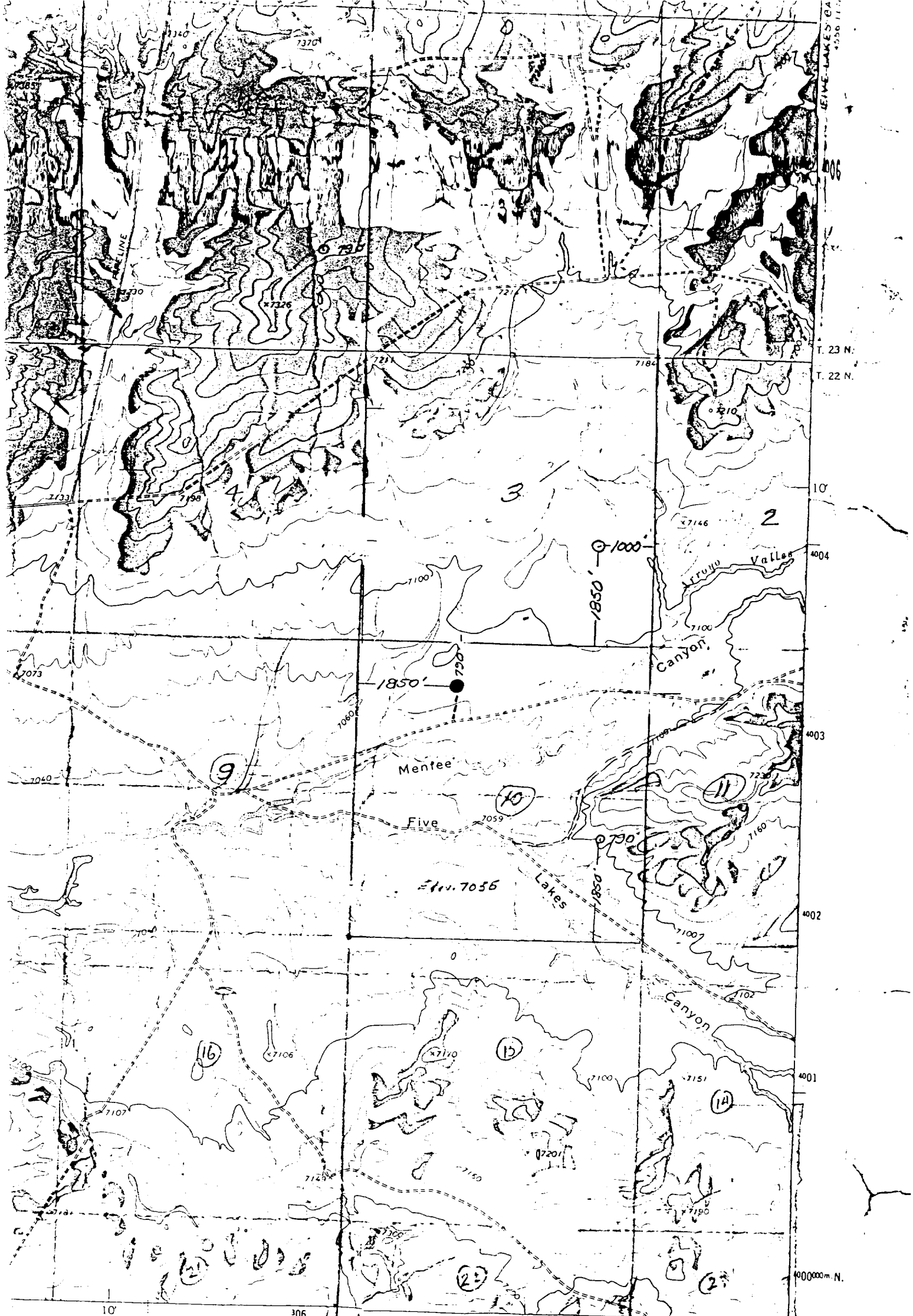
I hereby certify that the information contained herein is true and complete to the best of my knowledge and belief.

Louie W. Allen
Name
Geologist
Position
Aztec Energy Corp
Company
June 23, 1982
Date

I hereby certify that the well location shown on this plat was plotted in the field notes of actual NO. 1463 and that some is and correct to the knowledge of my



Date Surveyed
2 June 1982
Registered Professional Engineer
and/or Land Surveyor
James P. Leese
James P. Leese
Certificate No. **1463**



1 MILE
FET



307000m E. • • • INTERIOR- GEOLOGICAL SURVEY WASHINGTON D C - 1887

Aztec Energy Corporation
NE $\frac{1}{4}$ NW $\frac{1}{4}$ Sec. 10, T22N, R3W
Sandoval County, New Mex.

Unimproved dirt

○ State Route

36°07'30"
107°07'30"

(ARROYO CHUJILLI)
4556 11 SE

FIVE LAKES CANYON NW. N MFX