

UNITED STATES
DEPARTMENT OF THE INTERIOR
GEOLOGICAL SURVEY

30-093-30651

APPLICATION FOR PERMIT TO DRILL, DEEPEN, OR PLUG BACK

1a. TYPE OF WORK

DRILL ☒DEEPEN ☐PLUG BACK ☐

b. TYPE OF WELL

OIL
WELL ☒GAS
WELL ☐

OTHER

SINGLE
ZONE ☐MULTIPLE
ZONE ☐

2. NAME OF OPERATOR

Chace Oil Company, Inc.

3. ADDRESS OF OPERATOR

313 Washington, S. E., Albuquerque, NM 87102

4. LOCATION OF WELL (Report location clearly and in accordance with any State requirements.)

At surface

Unit "I" 1850' FSL and 1000' FEL

At proposed prod. zone

14. DISTANCE IN MILES AND DIRECTION FROM NEAREST TOWN OR POST OFFICE*

14 miles W-SW of Lindrith, New Mexico

15. DISTANCE FROM PROPOSED*

LOCATION TO NEAREST
PROPERTY OR LEASE LINE, FT.
(Also to nearest drlg. unit line, if any)

1850'

16. NO. OF ACRES IN LEASE

2560

18. DISTANCE FROM PROPOSED LOCATION*
TO NEAREST WELL, DRILLING, COMPLETED,
OR APPLIED FOR, ON THIS LEASE, FT.

2500'

19. PROPOSED DEPTH

7050'

17. NO. OF ACRES ASSIGNED
TO THIS WELL

160

20. ROTARY OR CABLE TOOLS

Rotary

21. ELEVATIONS (Show whether DF, RT, GR, etc.)

7124 GR

22. APPROX. DATE WORK WILL START*

September 10, 1982

23.

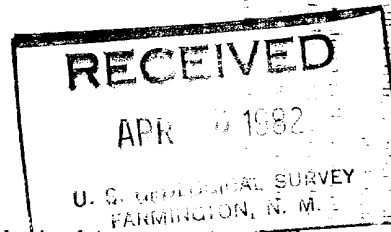
PROPOSED CASING AND CEMENTING PROGRAM

SIZE OF HOLE	SIZE OF CASING	WEIGHT PER FOOT	SETTING DEPTH	QUANTITY OF CEMENT
9 3/4"	8 5/8"	22	225'	225 sxs Class "B" cement
7 7/8"	4 1/2"	11.6	7050'	1st stage - 750 sxs 50/50 posmix; 2nd stage - 550 sxs 40/60 posmix; 12% gel; 200 sxs Class "B" cement

Drill 230' of 9 3/4" surface hole. Set 225' of 8 5/8" casing; cement to surface with 225 sxs cement. Use an oil base mud (15% oil) and Schaeffer 5000# standard doublegate BOP. Drill 7 7/8" hole to 7050' to test the Dakota formation.

Wasatch formation on surface. Estimated tops: Ojo-2170'; Pictures Cliffs-2480'; Chacra-2845'; Cliff House-4015'; Point Lookout-4390'; Gallup-5660'; Greenhorn-6650'; Dakota "A"-6725'; Dakota "D"-6900'.

D. V. tool @ 3000'. Float collar at 7700'.



IN ABOVE SPACE DESCRIBE PROPOSED PROGRAM: If proposal is to deepen or plug back, give data on present productive zone and proposed new productive zone. If proposal is to drill or deepen directionally, give pertinent data on subsurface locations and measured and true vertical depths. Give blowout preventer program, if any.

24.

SIGNED

Ross Eastabing

TITLE

Landman

DATE

March 30, 1982

(This space for Federal or State office use)

PERMIT NO.

APPROVAL DATE

APPROVED BY

TITLE

CONDITIONS OF APPROVAL, IF ANY:

JUL 07 1982

JAMES E. SUTHERLAND
DISTRICT ENGINEER

*See Instructions On Reverse Side

NMOCC

**NEW MEXICO OIL CONSERVATION COMMISSION
WELL LOCATION AND ACREAGE DEDICATION PLAT**

Form C-102
Supersedes C-128
Effective 1-1-65

All distances must be from the outer boundaries of the Section.

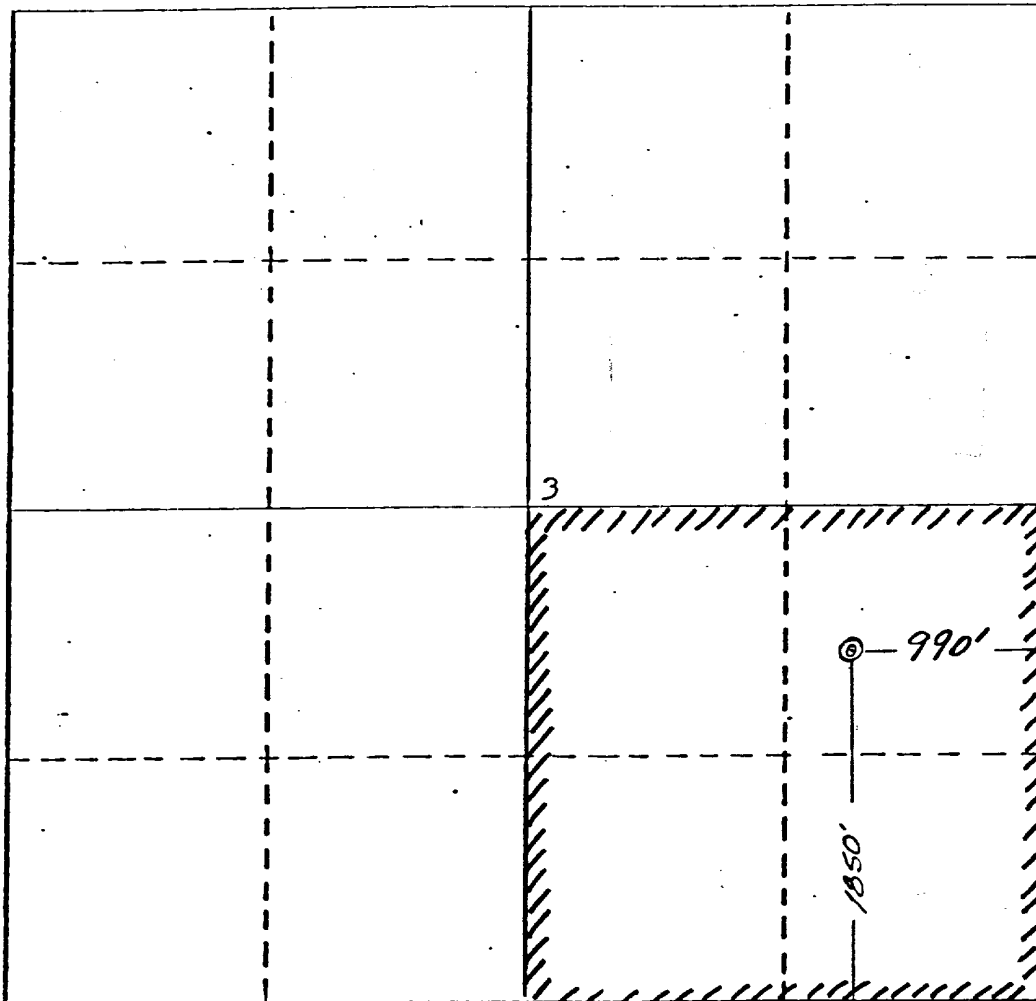
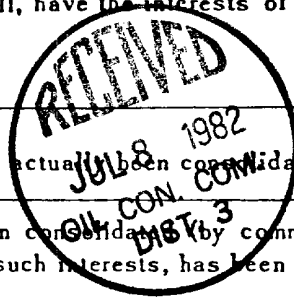
Operator CHACE OIL COMPANY			Lease CHACE APACHE 54		Well No. 10
Unit Letter I	Section 3	Township 22 NORTH	Range 3 WEST	County SANDOVAL	
Actual Footage Location of Well: <div style="display: flex; justify-content: space-between;"> 1850 feet from the SOUTH line and 990 feet from the EAST line </div>					
Ground Level Elev. 7124	Producing Formation DAKOTA	Pool Chacon Dakota	Dedicated Acreage: 160 Acres		

- Outline the acreage dedicated to the subject well by colored pencil or hatchure marks on the plat below.
- If more than one lease is dedicated to the well, outline each and identify the ownership thereof (both as to working interest and royalty).
- If more than one lease of different ownership is dedicated to the well, have the interests of all owners been consolidated by communitization, unitization, force-pooling, etc?

☐ Yes ☐ No If answer is "yes," type of consolidation _____

If answer is "no," list the owners and tract descriptions which have actually been consolidated. (Use reverse side of this form if necessary.) _____

No allowable will be assigned to the well until all interests have been consolidated by communitization, unitization, forced-pooling, or otherwise) or until a non-standard unit, eliminating such interests, has been approved by the Commission.



CERTIFICATION

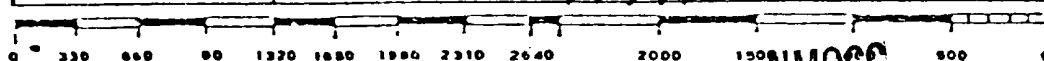
I hereby certify that the information contained herein is true and complete to the best of my knowledge and belief.

Name **Ross Eastaburg**
 Position **Landman**
 Company **Chace Oil Company**
 Date **5-4-82**

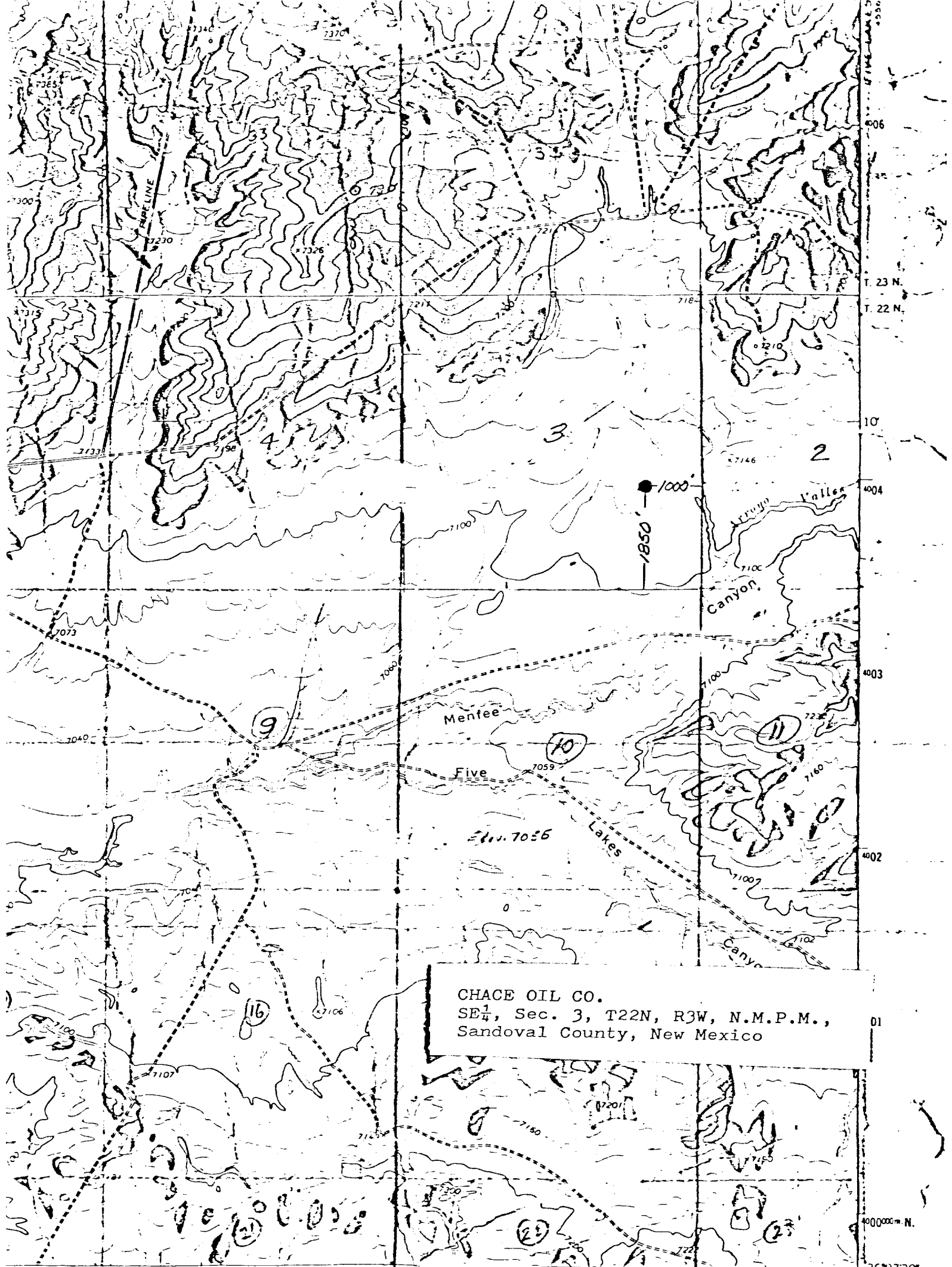
I hereby certify that the information shown on this plat was plotted from field notes of actual surveys made by me or under my supervision and that the same is true and correct to the best of my knowledge and belief.



Date Surveyed
March 23, 1982
 Registered Professional Engineer and/or Land Surveyor
James P. Leese
 Certificate No.
1463



NMOCC



CHACE OIL CO.
SE $\frac{1}{4}$, Sec. 3, T22N, R3W, N.M.P.M.,
Sandoval County, New Mexico

1 MILE
7000 FEET
KILOMETER



QUADRANGLE LOCATION

ROAD CLASSIFICATION
Heavy-duty ——— Light-duty - - - - -
Unimproved dirt
○ State Route

FIVE LAKES CANYON NW. N. MEX.
N36°07'30" W107°07'30"

1963