



STATE OF NEW MEXICO
ENERGY AND MINERALS DEPARTMENT

OIL CONSERVATION DIVISION
AZTEC DISTRICT OFFICE

1000 RIO BRAZOS ROAD
AZTEC, NEW MEXICO 87410
(505) 334-6178

OIL CONSERVATION DIVISION
BOX 2088
SANTA FE, NEW MEXICO 87501

DATE June 14, 1983

RE: Proposed MC _____
Proposed DHC ✓ _____
Proposed NSL _____
Proposed SWD _____
Proposed WFX _____
Proposed PMX _____

Gentlemen:

I have examined the application dated June 8, 1983
for the Zobo Production July State 36 #1 A-36-23N-6W
Operator Lease and Well No. Unit, S-T-R

and my recommendations are as follows:

Approve pending pressure and rate test of M.V.

Yours truly,

Frank D. O'Leary

LOBO PRODUCTION
R.E. Lauritsen & Gary Roberts
P.O. BOX 2364
FARMINGTON, NEW MEXICO 87401
TELEPHONE: (505) 327-0331

June 7, 1983

Mr. Joe D. Ramey, Director
New Mexico Oil Conservation Division
P.O. Box 2088
Sante Fe, New Mexico 87501

Re: Lobo Production Co.
#1-Gulf State-36
Sec. 36, T23N, R6W
850' FNL & 800' FEL
Sandoval County, NM

Dear Mr. Ramey:

Lobo Production is hereby requesting permission for downhole commingling of production in the referenced well from the Counselors Gallup Pool and the Venado Mesa Verde Pool under Rule 303-C of the Oil Conservation Division Rules and Regulations.

Currently the Gallup zone is producing and the Mesa Verde zone is behind pipe. Upon receiving permission for commingling, a completion attempt will be made in the Mesa Verde. If productive, the zone will be tested and potentialized before commingling commences.

As evidence for permission for commingling, the attached information is offered as required under Rule 303-C-2. If your office requires additional information, please give me a call at (505) 327-0331, or call Dave Simmons, consulting engineer, at (505) 326-2510.

Please inform Lobo Production at P.O. Box 2364, Farmington, New Mexico 87499, as soon as possible of your ruling.

Respectfully submitted,



R.E. Lauritsen
Partner

cc: Mr. Frank Chavez
Supervisor and Oil and Gas Inspector
Attachments

RECEIVED
JUN 8 1983
OIL CON. DIV.
DIST. 3

APPLICATION FOR DOWNHOLE

COMMINGLING

to

NEW MEXICO OIL CONSERVATION DIVISION

RECEIVED

JUN 8 1983

**OIL CON. DIV.,
DIST. 3**

The following information is submitted as required under rule 303-C-2 in application to the New Mexico Oil Conservation Division for approval of downhole commingling:

(a) Operator's name and address;

Lobo Production Company
P.O. Box 2364
Farmington, New Mexico

(b) The lease name, well number, and well location are;

Gulf State #1-36
Sec. 36, T23N, R6W
850' FNL & 800' FEL
Sandoval County, New Mexico

(c) The pools to be commingled are;

Counselors Gallup
Venado Mesa Verde (Menefee Sand)

(d) Exhibit "A" represents a plat of the acreage showing the offsetting ownership. The well of reference has 160 acres dedicated to the Gallup Pool. The acreage dedicated is the NE/4 of Section 36, T23N, R6W, Sandoval County, N.M..

(e) The well was tested in May 1983 and attached as Exhibit "B" is State Form C116 indicating the current oil, gas and water production. The Mesa Verde zone is behind pipe. It is estimated the initial production from this zone will be 20 BOPD, 10 BWPD and 40-50 MCFD. This estimate is based on offset production.

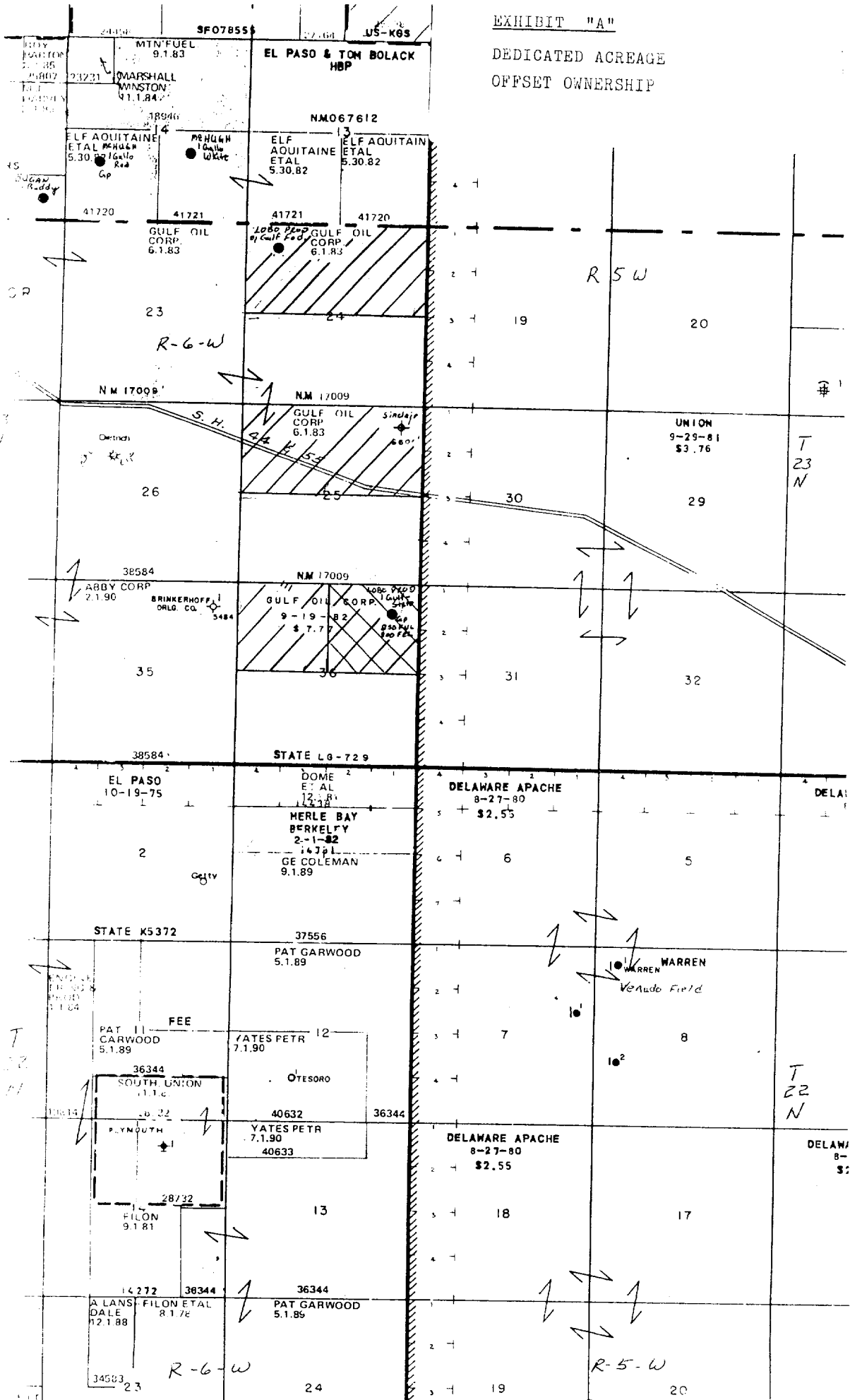
(f) Attached for reference are Exhibit "C1"; Production History of the referenced well, Exhibit "C2", production history averaged to days of production on referenced well; Exhibit "D1", Exhibit "D2", and Exhibit "D3", production decline curves of offsetting Gallup producing wells; and Exhibits "E1" & "E2" production decline curves for the two wells currently producing from the Venado Mesa Verde Pool.

- (g) Attached for reference is a Completion Report covering the completion methods and testing covering the referenced well.
- (h) Attached as Exhibit "F" is the projected decline curves of the Gallup Pool, Mesa Verde Pool and combined production. This curve was produced from analysis of the decline curves of the offsetting wells mentioned previously. The Gallup zone was initialized at 6 BOPD for the remainder of 1983, then declined at 20 percent for the next 3 years and then the production was declined at 10 percent per year thereafter. The Mesa Verde zone was initialized at 20 BOPD for the first six months and declined 35 percent. The next four years were declined at 25 percent then 10 percent thereafter.
- (i) Both zones will require artificial lift and the bottom hole pressures are estimated as follows:

Gallup Zone: 2000 psig.
Mesa Verde: 1800 psig.
- (j) The oil produced from the Gallup formation has a paraffin base and the API Gravity runs around 43-45°. The oil produced from the Mesa Verde formation is also of a paraffin base and has an API Gravity of 46-48°. There should not be any related problems to commingling these two oils.
- (k) All oil sold in the area is priced the same, therefore there will be no reduction in the value of the oils due to commingling.
- (l) The production shall be allocated to each zone according to the projected decline curve. However, it is anticipated that the Mesa Verde zone will be produced for a month individually to establish an Initial Potential and Gas Oil Ratio. This will establish the starting point for commencing a decline curve.
- (m) Attached for reference are copies of letters mailed to offset operators notifying them of the request for commingling.

EXHIBIT "A"

DEDICATED ACREAGE
OFFSET OWNERSHIP



NEW MEXICO OIL CONSERVATION COMMISSION
GAS-OIL RATIO TESTS

Operator		County		Sandoval	
Lobo Production Company		Counselors Gallup		Sandoval	
Address		P.O. Box 2364 Farmington, N.M.		Special <input checked="" type="checkbox"/>	
LEASE NAME		WELL NO:		TYPE OF TEST - (X)	
Gulf-State 36		1		TEST - (X)	
LOCATION		DATE OF TEST		DAILY ALLOWABLE	
U S T R		5-24-83 P		4.5	
36 23N 6W		1/4 35		4.5	
24		1/2 46		6.3	
59		9365:1			
WATER BBLs.		GRAV. OIL		OIL BBLs.	
GAS M.C.F.		GAS RATIO		CU.FT./BBL.	
<p>Note: Special test run subject to Rule 303-C to gather data for commingling order.</p> <p>EXHIBIT " B "</p> <p>GULF-STATE # 1-36 Gas Oil Ratio</p>					

RECEIVED
JUN 8 1983
OIL CON. DIV.
DIST. 3

I hereby certify that the above information is true and complete to the best of my knowledge and belief.

R. S. Sandoval
(Signature)

Agent
June 2, 1983

No well will be assigned an allowable greater than the amount of oil produced on the official test.
During gas-oil ratio test, each well shall be produced at a rate not exceeding the top unit allowable for the pool in which well is located by more than 25 percent. Operator is encouraged to take advantage of this 25 percent tolerance in order that well can be assigned increased allowables when authorized by the Commission.
Gas volumes must be reported in MCF measured at a pressure base of 15.025 psia and a temperature of 60° F. Specific gravity base will be 0.60.
Report casing pressure in lieu of tubing pressure for any well producing through casing.
Mail original and one copy of this report to the district office of the New Mexico Oil Conservation Commission in accordance with Rule 301 and appropriate pool rules.

<p>LOBO PRODUCTION COMPANY GULF-STATE #36-1 "GALLUP" "A", Sec. 36, T23N, R6W Sandoval County, New Mexico EXHIBIT "C1"</p>										1982	1983	1984	19	19	19	19	19
---	--	--	--	--	--	--	--	--	--	------	------	------	----	----	----	----	----

0129 24

LOBO PRODUCTION COMPANY
GULF-STATE #36-1 "GALLUP"
"A", Sec. 36, T23N, R6W
Sandoval County, New Mexico

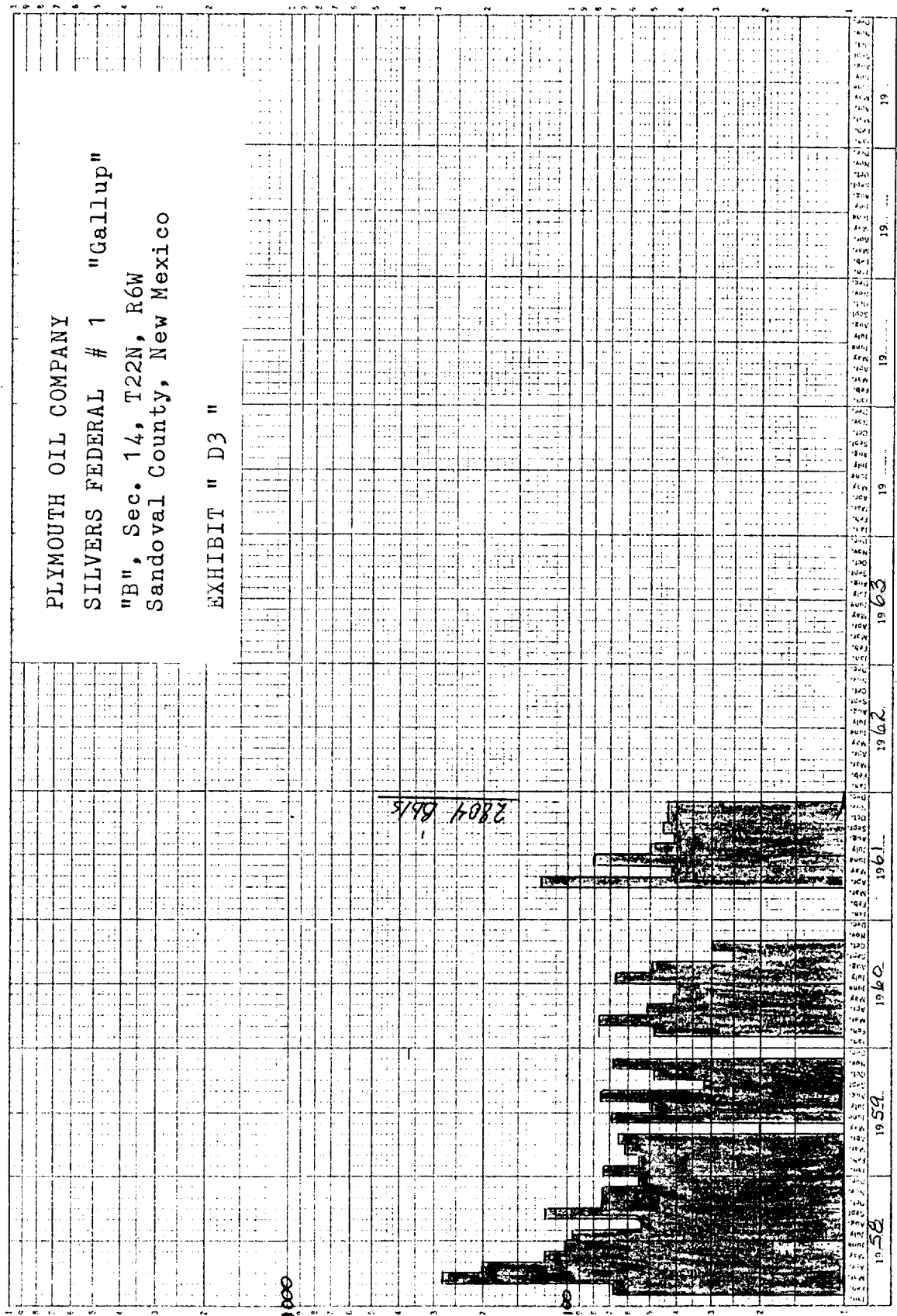
EXHIBIT "C2"

0120 28
 0120 28

DIETRICH RESOURCE CORP.		FEDERAL #26-22		"Gallup"	
"F", Sec. 26, T23N, R6W		Sandoval County, New Mexico		EXHIBIT " D1 "	
1981	1982	1983	1984	1985	1986
1987	1988	1989	1990	1991	1992
1993	1994	1995	1996	1997	1998
1999	2000	2001	2002	2003	2004
2005	2006	2007	2008	2009	2010
2011	2012	2013	2014	2015	2016
2017	2018	2019	2020	2021	2022
2023	2024	2025	2026	2027	2028
2029	2030	2031	2032	2033	2034
2035	2036	2037	2038	2039	2040
2041	2042	2043	2044	2045	2046
2047	2048	2049	2050	2051	2052
2053	2054	2055	2056	2057	2058
2059	2060	2061	2062	2063	2064
2065	2066	2067	2068	2069	2070
2071	2072	2073	2074	2075	2076
2077	2078	2079	2080	2081	2082
2083	2084	2085	2086	2087	2088
2089	2090	2091	2092	2093	2094
2095	2096	2097	2098	2099	2100
2101	2102	2103	2104	2105	2106
2107	2108	2109	2110	2111	2112
2113	2114	2115	2116	2117	2118
2119	2120	2121	2122	2123	2124
2125	2126	2127	2128	2129	2130
2131	2132	2133	2134	2135	2136
2137	2138	2139	2140	2141	2142
2143	2144	2145	2146	2147	2148
2149	2150	2151	2152	2153	2154
2155	2156	2157	2158	2159	2160
2161	2162	2163	2164	2165	2166
2167	2168	2169	2170	2171	2172
2173	2174	2175	2176	2177	2178
2179	2180	2181	2182	2183	2184
2185	2186	2187	2188	2189	2190
2191	2192	2193	2194	2195	2196
2197	2198	2199	2200	2201	2202
2203	2204	2205	2206	2207	2208
2209	2210	2211	2212	2213	2214
2215	2216	2217	2218	2219	2220
2221	2222	2223	2224	2225	2226
2227	2228	2229	2230	2231	2232
2233	2234	2235	2236	2237	2238
2239	2240	2241	2242	2243	2244
2245	2246	2247	2248	2249	2250
2251	2252	2253	2254	2255	2256
2257	2258	2259	2260	2261	2262
2263	2264	2265	2266	2267	2268
2269	2270	2271	2272	2273	2274
2275	2276	2277	2278	2279	2280
2281	2282	2283	2284	2285	2286
2287	2288	2289	2290	2291	2292
2293	2294	2295	2296	2297	2298
2299	2300	2301	2302	2303	2304
2305	2306	2307	2308	2309	2310
2311	2312	2313	2314	2315	2316
2317	2318	2319	2320	2321	2322
2323	2324	2325	2326	2327	2328
2329	2330	2331	2332	2333	2334
2335					

0629 ZP

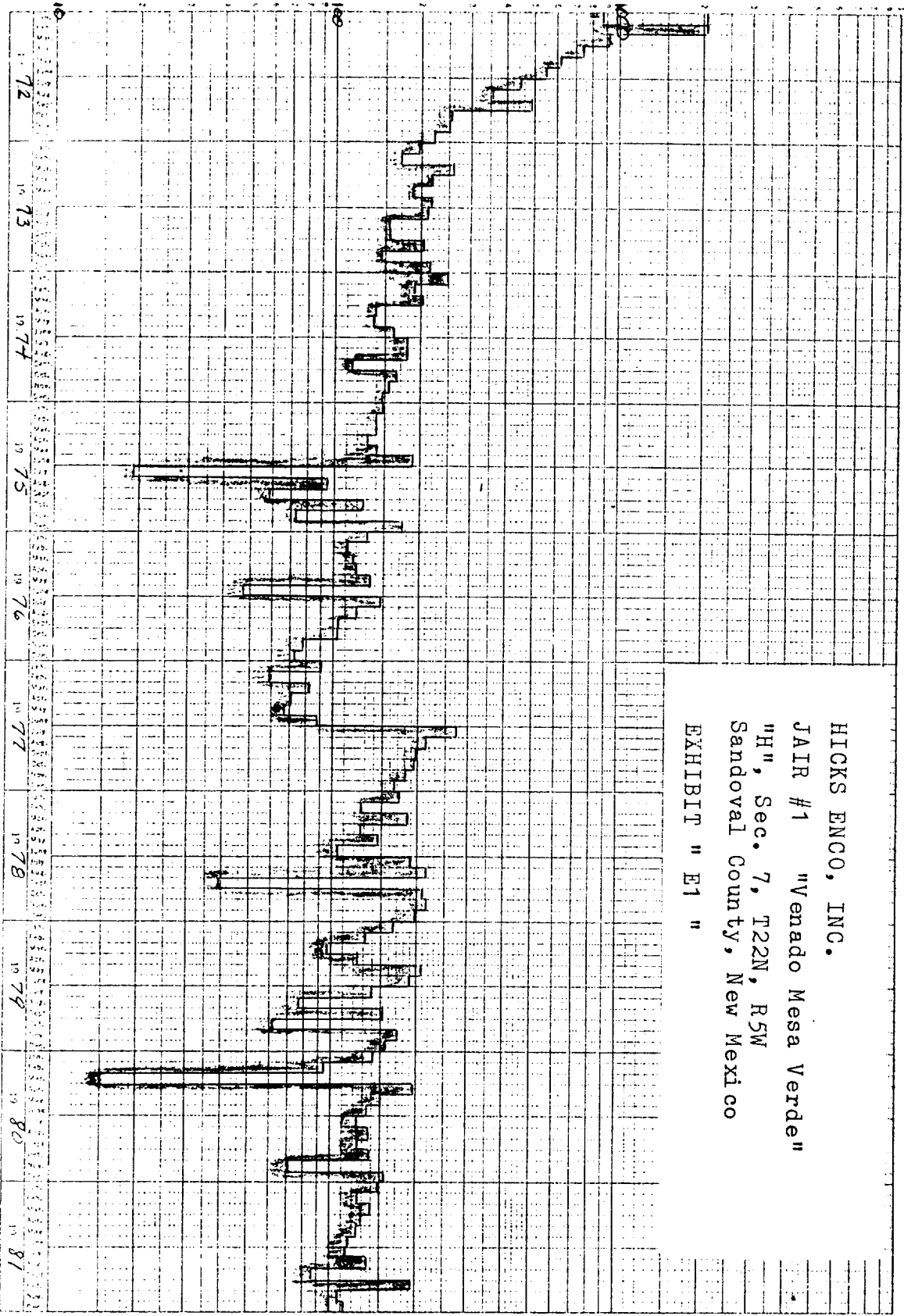
PLYMOUTH OIL COMPANY
 SILVERS FEDERAL # 1 "Gallup"
 "B", Sec. 14, T22N, R6W
 Sandoval County, New Mexico
 EXHIBIT " D3 "



600 Mo.

B D P M_b

HICKS ENCO, INC.
JAIR #1 "Venado Mesa Verde"
"H", Sec. 7, T22N, R5W
Sandoval County, New Mexico
EXHIBIT " E1 "



JAIR #2 "Venado Mesa Verde"
"L", Sec. 8, T22N, R5W
Sandoval County, New Mexico

E. D. F. No.

BOPM. (AUG.)

EXHIBIT "F"
PROJECTED DECLINE CURVES for
GALLUP & MESA VERDE ZONES

PROJECTED MESA VERDE PRODUCTION

PROJECTED COMBINED PRODUCTION

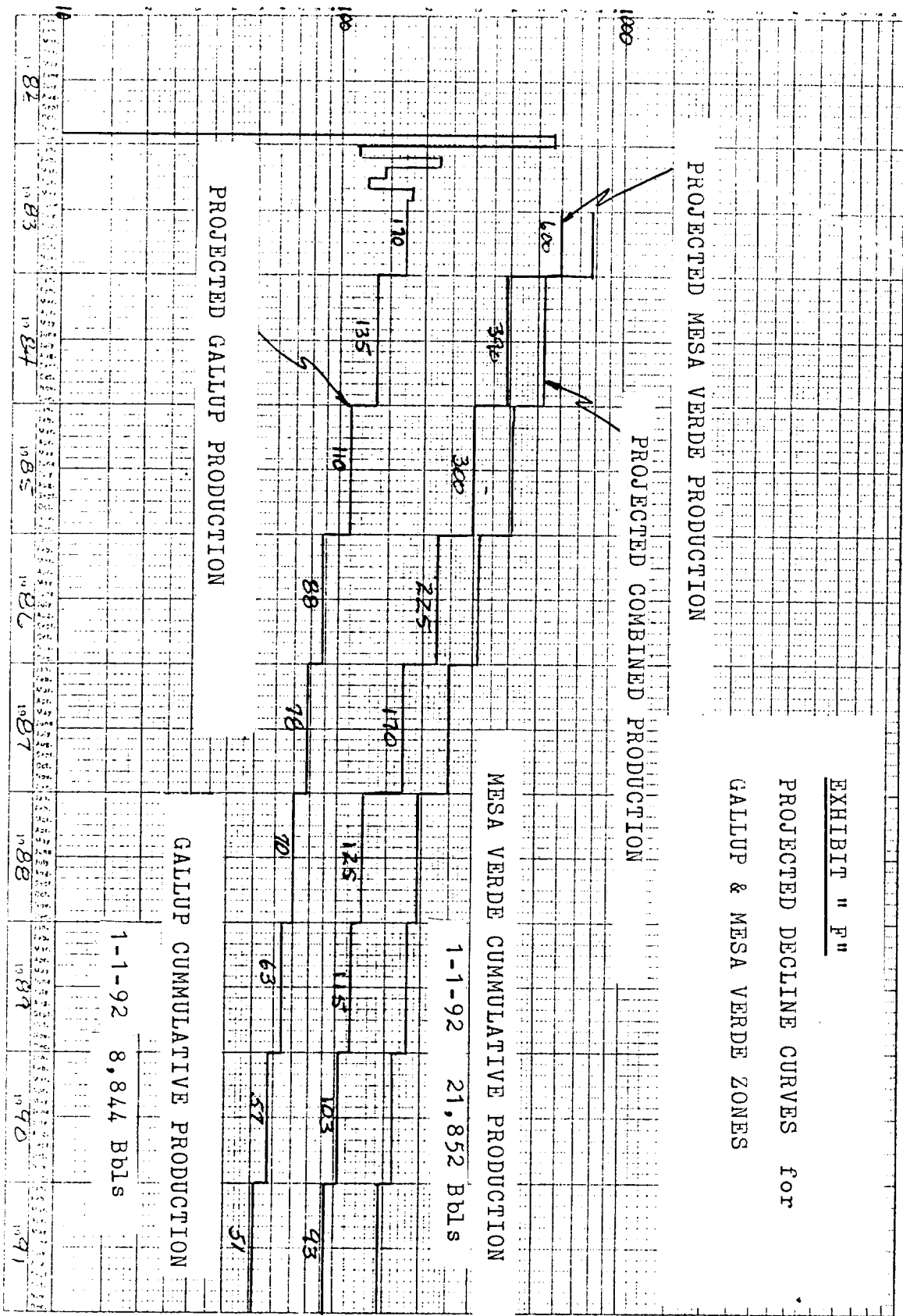
MESA VERDE CUMMULATIVE PRODUCTION

1-1-92 21,852 Bbls

PROJECTED GALLUP PRODUCTION

GALLUP CUMMULATIVE PRODUCTION

1-1-92 8,844 Bbls



SIMMONS ENGINEERING & CONSULTING CO.
5704 VILLA VIEW DRIVE
FARMINGTON, NEW MEXICO 87401
PHONE (505) 326-2510 RADIO CONTACT (505) 325-1873

COMPLETION REPORT

for

LOBO PRODUCTION

GULF STATE NO. 1-36

850' FNL & 800' FEL, Sec. 36, T23N, R6W

SANDOVAL COUNTY, NEW MEXICO

ELEVATION: 6919 KB

WILDCAT GALLUP



R. D. Simmons

SIMMONS ENGINEERING & CONSULTING CO.
5702 1/2 N. 2ND DRIVE
FARMINGTON, NEW MEXICO 87401
PHONE (505) 326-2510 RADIO CONTACT (505) 325-1873

COMPLETION PROGNOSIS

LOBO PRODUCTION
GULF-STATE NO. 1-36
850' FNL & 800' FEL Sec. 36, T23N, R6W
SANDOVAL COUNTY, NEW MEXICO
ELEVATION: 6919 KB.
WILDCAT GALLUP

RECEIVED

JUN 8 1983

OIL CON. DIV./
DIST. 3

Completion Rig:	Action Well Service	327-6006
	Radio Service	327-7062
Stimulation:	Halliburton	325-3575
Logging:	Basin Perforators	327-5244
Frac tanks & water:	Dawn Trucking	327-6316
Supplies:	Rig Equipment	327-4927
Trucking:	Dawn Trucking	327-6316

Directions: Go South from Bloomfield, New Mexico on highway 44
2½ miles south of Counselors Trading Post and turn
right on access road.

Casing: 4½, 10.5#, K55, ST&C, 8rd. D.V. Tool @ 4300' KB.
PBSD @ 5563' KB. Cemented in 2 stages, with 980 sks.

Representative:	Dave Simmons	326-2510
	Radio Contact	325-1873
	Unit	2514

LOBO PRODUCTION
 GULF-STATE 1-36
 COMPLETION PROGNOSIS - PROCEDURE

1. Move Action Well Service on location, install BOP, talley 2-3/8" tubing and run in hole with 3-7/8" mill tooth bit. Clean out cement to top of D.V. tool. Pressure test casing with rig pump to 2000 psig before drilling D.V. tool. Clean out to PBTD and circulate hole clean.
2. Pressure test casing with Halliburton to 3000 psig. Circulate hole with 1% KCL water. Pull tubing to 5470' and spot 500 gallons 7½% HCL acid.
3. Run Gamma ray, CCL log from PBTD to 4000'.
4. Perforate using 3-1/8" guns 0.38" holes as follows:

5378 - 5390	1 jspf	12 holes
5406 - 5416		10 "
5426 - 5430		4 "
5456 - 5470		16 "

Total of 42 holes
5. Acidize down casing with 2000 gallons 15% HCL acid and drop 65 ball sealers and ball off if possible. Run junk basket on wireline and retrieve balls.
6. Fracture treat down casing with 75,000# 20/40 sand in slick water as follows at 60-75 BPM:

15,000	gallons	PAD	
5,000	"	@ 1/2#	20/40
10,000	"	@ 1#	
15,000	"	@ 1½#	
20,000	"	@ 2#	

Flush to bottom perforation.
7. Run Retrievable Bridge Plug on 2-3/8" tubing and set @ 5350'. Pressure test BP to 3000 psig. Pull tubing to 5300' and spot 500 gallons 7½% HCL acid.
8. Perforate with 3-1/8" guns 0.38" holes as follows:

5040 - 5050	1 jspf	10 holes	
5060 - 5066		6 "	
5250 - 5265		15 "	
5270 - 5275		6 "	
5286 - 5300		14 "	Total 51 holes
9. Acidize down casing with 2000 gallons 15% HCL acid and drop 70 ball sealers and ball off if possible. Run junk basket and retrieve balls.

LOBO PRODUCTION
GULF-STATE 1-36
COMPLETION PROGNOSIS - PROCEDURE

10. Fracture treat down casing with 75,000# 20/40 sand in slick water as follows at 60-75 BPM:
SAME SCHEDULE AS ABOVE !
Flush to bottom perforation.
11. Run tubing and clean out to BP. Pull BP. Clean out to PBTD with rig pump or N₂ as required.
12. Land tubing at 5500' with 30' mud shoe, 3' perforated sub and Seating Nipple. Swab test to pit or frac tank to establish flow or requirement for pump.



R. D. Simmons

October 14, 1982

LOBO PRODUCTION
GULF STATE 1-36
COMPLETION REPORT

- 10-23-82 Moved Action Well Service Rig 5 on location. Welded on bell nipple. installed Bop and wellhead. Tallied 2-3/8" tubing and ran mill tooth bit in hole. Tagged cement at 5154'. Drilled cement out to DV tool @ 5300'. Pressure tested casing to 2000 psig with rig pump. Test okay. Drilled DV tool and cleaned out to PBTD @ 5557'. Circulated hole with rig pump and shut down.
- 10-25-82 Pressure tested casing with Western Co. to 3000 psig for 15 minutes. OK. Circulated hole with 1% KCL water and spot 500 gallons 7½% HCL acid. Pulled tubing and rigged up perforators. Ran GR-CCL log from PBTD to 4300'. Perforated using 3-1/8" cased hole guns 5378-90', 5406-16', 5426-30, 5456-70'. Total of 42 holes. Shut well in for the night.
- 10-26-82 Broke down perforations and acidized with 2000 gallons 15% HCL acid and balled off at 2950 psig. Ran wireline junk basket and retrieved balls. Frac'd down casing with slick water: 75,000# 20/40 sand as follows: 15,000 gallons PAD, 5,000 gallons @ 1/2#, 10,000 gallons @ 1#, 35,000 gallons @ 1-1/2#, 5,000 gallons at 2#, and flushed over by 10 bbls. ISIP 800 psig, ATR of 65 BPM, ATP of 2900 psig. Ran Baker retrievable Bridge Plug on wireline and set @ 5350'. Ran tubing to 5300' and spot 500 gallons 7½% HCL acid. Pressure tested casing to 3000 psig. OK. Perforated second stage as follows: 5040-50, 5060-66, 5250-65, 5270-75, 5286-5300'. Acidized down casing with 2000 gallons 15% HCL acid and balled off. Breakdown pressure 1100 psig. Isip 800 psig. Ran wireline junk basket and recovered balls. Shut down.
- 10-27-82 Western Frac'd down casing with slick water as follows: 15,000 gallons PAD; 5,000 gallons @ 1/2#, 20/40 sand; 10,000 gallons @ 1#, 41,667 gallons @ 1½#, Lost one pump and finished frac on one pound sand. Frac'd @ 69 BPM @ 2900 psig, and 2300 psig @ 60 BPM after losing pump. Pumped total of 75,000# 20/40 sand in 66,667 gallons slick water. ATR of 66 BPM; ATP of 2700 psig. ISIP 700 psig. Shut well in for 2 hours and opened to pit with 500 psig on casing. Flowed well thru 3/4 ck ith 375 psig. Flowed well to pit until pressure dropped. Ran tubing in hole and tagged sand @ 5130'. Pulled 4 stands and shut down. Left well flowing to pit over night.
- 10-28-82 Well dead this AM. Circulated sand off BP and recovered BP. Bottom zone flowing sand and water. Ran tbgs back in hole and circulated sand out to PBTD. Pulled 6 stands off btm. and shut down. Slight show of gas.

LOBO PRODUCTION
GULF STATE #1-36
COMPLETION REPORT

- 10-29-82 Well dead this AM. Rab tubing in hole to PBTD to check sand fill. Pulled one stand and rigged up swab tools. Fluid level at surface first run. Made total of 38 runs and recovered 200 bbls. fluid. Well gassing 1 min. before each run. Fluid level down to 2800'.
- 10-30-82 Well dead this AM. Fluid level 500' first run. Ran tbg. to PBTD to check sand. No sand fill. Pulled tubing and ran in hole as follows: Bull plug, one joint tbg., 3' perforated sub, seating nipple and 169 joints 2-3/8" 4.7#, CW55, EUE 8rd and landed with btm. at 5465' KB. Nippled down BOP and nipped up wellhead. Fluid level @ 2000'. Made total of 28 runs and recovered 120 bbls. frac water. Rig down for repairs 2 hours. Gas before run 30 seconds at beginning and 80 seconds at end of day. Shut well in for night.
- 11-1-82 Tubing and casing pressure zero this AM. Moved Action Well Service Rig 3 off location and moved Action Swab Co. on location. Fluid level 300' first run. Made 20 runs and recovered 100 bbls. fluid. Slight amount of gas and only trace of oil.
- 11-2-82 Swabbed well to pit. Trace of oil and show of gas.
- 11-3-82 Swabbed to pit.
- 11-4-82 Swabbed to pit.
- 11-5-82 Swabbed to pit. Released rig.
- 11-19-82 Moved swab unit on location. Swabbed to tanks. Oil cut 25%.
- 11-20-82 Swabbed to tank. Oil cut 30%.
- 11-22-82 Kicked well off to tanks. Flowed with oil cut of 30%.
- 11-23-82 Well kicked off by itself to tanks. Flowed 2 hours and placed on production through production unit. Well flowed for 1 hour and died. Had released swab unit. Shut well in for night.
- 11-26-82 Opened well to production unit with 200 psig on tbg. and 1100 psig on casing. Tubing bled down and well would not flow. Left well open @ 12:00 PM. Moved Black Gold rig on location. Well had kicked off before rigged up and was flowing with 400 psig on tubing. Flowed to tanks through production unit for 4½ hours. Made over 20 bbls. fluid. Left well open to production unit.
- 11-27-82 Well had not flowed to tanks. Casing pressure 1100 psis, tubing 50 psig. Rigged up Black Gold and made one swab run. Fluid level @ 2000'. Kicked well off and rigged down rig. Flowed well to tanks for 1½ hours and recovered 30 bbls. fluid. Tubing pressure dropped to 50 psig and casing pressure dropped to 750 psig. Shut-in.

LOBO PRODUCTION
GULF STATE 11-36
COMPLETION REPORT

- 12- 1-82 Flowed well to tanks and then put through unit. Flowed 3 hrs. and logged off. Shut well in.
- 12- 2-82 Opened to tanks and kicked off after 1 hr. Put through unit and flowed 30 minutes. Shut in with 700 psig on tubing. Opened after 30 minutes and flowed through unit with 12/64 choke. Left well open to unit.
- 12- 3-82 Well had not produced over night. Shut well in.
- 12-7-82 Instsllled motor valve and bottom hole tubing stop and spring. Blew well down and installed nipple and valve on casing side. Started swabbing well. Fluid level first run at 2200'. Made total of 11 runs and recovered 70 bbls. fluid. Well kicked for 20 minutes after last four runs. Fluid level down to 2500' with casing pressure down to 450 psig. Shut well in.
- 12- 8-82 Casing pressure 875 psig and 500 psig on tubing. Drained tank form 10' to 7' 6". Opened well and waited 1½ hrs. but would not flow. Made one run and kicked well off. Shut well in when casing pressure dropped to 775 psig. After two hours opened well up. Well kicked off after one hour and flowed to tanks. Placed well on timer at 3 hrs. off and 45 minutes on. Last pressures were 750 casing and 250 tubing. Last tank guage 9' 10". Made total of 47 bbls. fluid.
- 12- 9-82 Well was logged off in AM with 950 psig on casing and 100 psig on tubing. Made one swab run with fluid level at 2000' and kicked well off. Place well through unit to check for dumping and shut well in. Reset timer for 4 hours off and 2 hours on. Well came on after 4 hours but wouldn't operate against 100 psig back pressure. Dropped pressure to 60 psig and well started producing and choke setting of 18/64. Made 9" fluid or 15 bbls. Last pressures 850 psig casing and 400 psig on tubing. Left well open to unit with timer set 4 off 2 on.
- 12-10-82 Well logged off with 925 psig casing pressure and 150 psig on tubing. Kicked well off through seperator with fluid level at 3500' and produced 25 bbls. fluid. Well logged off and started swabbing. Recovered 60 bbls. fluid with fluid level at 3500'. All fluid swabbed was water. Placed well back on timer and left on line through seperator.
- 12-11-82 Well logged off with 925 psig on casing and 250 psig on tubing. Fluid level 1200'. Kicked well off with one run and flowed 2½ hours. Recovered 21 bbls fluid. Swabbed well rest of day and well would flow 20 mins. after each run. Recovered 70 bbls fluid for day. last pressure 350 psig casing and zero tubing. Fluid level down to 4300'. Placed well on timer at 10 off 2 on.

LOBO PRODUCTION
GULF STATE # 1-36
COMPLETION REPORT

- 12-13-82 Well logged off with 850 psig casing and 60 psig on tubing. Fluid level first run at 2000'. Kicked well off with one run. Flowed 2 hours and logged off. Swabbed well rest of day and flowed 20 minutes after each run. Recovered 62 bbls. fluid 50% oil. Fluid level down to 4500' with casing pressure 300 psig. Shut well in.
- 12-14-82 Pressure this AM 725 psig on casing and 300 psig on tubing. Open well to tanks and kicked off and flowed 1½ hours. Well logged off. Fluid level first run at 3500' with 400 psig on casing. Recovered 45 bbls. fluid for day. Oil cut 50%. Last casing pressure 275 psig. Fluid level 4700'. Shut well in for night.
- 12-15-82 Well shut-in with 725 psig on casing and 425 psig on tubing. Rigged down Silver Star Swabbing and moved off location. Left well shut-in.

A handwritten signature in dark ink, appearing to read "R. D. Simmons", is written over a horizontal line.

R. D. Simmons

PS Form 3811, Dec. 1980

RETURN RECEIPT, REGISTERED, INSURED AND CERTIFIED MAIL

STICK TO IT
If you want to
have this service
on your mail, there
is a return receipt
card, Form 3811,
which you must
attach to the article.
Do not want the
return receipt?
Then, do not attach
the card. Otherwise,
it is adjacent to the
article and delivery
restriction is
for the services requested.
If you want a receipt and present it.

(CONSULT POSTMASTER FOR FEES)

1. The following service is requested (check one).

- ☐ Show to whom and date delivered
☐ Show to whom, date, and address of delivery ..

2. ☐ **RESTRICTED DELIVERY**

(The restricted delivery fee is charged in addition to the return receipt fee.)

TOTAL \$

3. ARTICLE ADDRESSED TO:

Gulf
P.O. Box 2100
Houston Texas 77252

4. TYPE OF SERVICE:

- ☐ REGISTERED ☐ INSURED
☐ CERTIFIED ☐ COD
☐ EXPRESS MAIL

ARTICLE NUMBER

P495-058-970

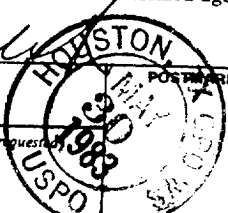
(Always obtain signature of addressee or agent)

I have received the article described above.

SIGNATURE ☐ Addressee ☒ Authorized agent

5. DATE OF DELIVERY

JAN 3 1983



6. ADDRESSEE'S ADDRESS (Only if requested)

7. UNABLE TO DELIVER BECAUSE:

7a. EMPLOYEE'S INITIALS

PS Form 3811, Dec. 1980

RETURN RECEIPT, REGISTERED, INSURED AND CERTIFIED MAIL

● SI

(CONSULT POSTMASTER FOR FEES)

1. The following service is requested (check one).

- ☐ Show to whom and date delivered
☐ Show to whom, date, and address of delivery ..

2. ☐ **RESTRICTED DELIVERY**

(The restricted delivery fee is charged in addition to the return receipt fee.)

TOTAL \$

3. ARTICLE ADDRESSED TO:

abby Corporation
P.O. Box 1029
Grand Junction Colo 81502

4. TYPE OF SERVICE:

- ☐ REGISTERED ☐ INSURED
☐ CERTIFIED ☐ COD
☐ EXPRESS MAIL

ARTICLE NUMBER

P495-058-969

(Always obtain signature of addressee or agent)

I have received the article described above.

SIGNATURE ☐ Addressee ☒ Authorized agent

5. DATE OF DELIVERY

POSTMARK

6. ADDRESSEE'S ADDRESS (Only if requested)

JUL 1 1983

7. UNABLE TO DELIVER BECAUSE:

7a. EMPLOYEE'S INITIALS

● **SENDER:** Complete items 1, 2, 3, and 4.
 Add your address in the "RETURN TO" space on reverse.

(CONSULT POSTMASTER FOR FEES)

1. The following service is requested (check one).

- ☐ Show to whom and date delivered
☐ Show to whom, date, and address of delivery ..

2. ☐ **RESTRICTED DELIVERY**

(The restricted delivery fee is charged in addition to the return receipt fee.)

TOTAL \$

3. ARTICLE ADDRESSED TO:

Dretrick Exploration
410 17th Suite 2450
DENVER Colo 80202

4. TYPE OF SERVICE:

- ☐ REGISTERED ☐ INSURED
☐ CERTIFIED ☐ COD
☐ EXPRESS MAIL

ARTICLE NUMBER

P495-058-968

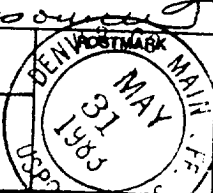
(Always obtain signature of addressee or agent)

I have received the article described above.

SIGNATURE ☐ Addressee ☒ Authorized agent

5. DATE OF DELIVERY

7/31/83



6. ADDRESSEE'S ADDRESS (Only if requested)

● **SENDER:** Complete items 1, 2, 3, and 4.
 Add your address in the "RETURN TO" space on reverse.

(CONSULT POSTMASTER FOR FEES)

1. The following service is requested (check one).

- ☐ Show to whom and date delivered
☐ Show to whom, date, and address of delivery ..

2. ☐ **RESTRICTED DELIVERY**

(The restricted delivery fee is charged in addition to the return receipt fee.)

TOTAL \$

3. ARTICLE ADDRESSED TO:

EL PASO EXPLORATION
P.O. Box 1492
EL PASO TEXAS 79978

4. TYPE OF SERVICE:

- ☐ REGISTERED ☐ INSURED
☐ CERTIFIED ☐ COD
☐ EXPRESS MAIL

ARTICLE NUMBER

P498-200-416

(Always obtain signature of addressee or agent)

I have received the article described above.

SIGNATURE ☐ Addressee ☒ Authorized agent

5. DATE OF DELIVERY

POSTMARK

6. ADDRESSEE'S ADDRESS (Only if requested)

7. UNABLE TO DELIVER BECAUSE:

7a. EMPLOYEE'S INITIALS

PS Form 3811, Dec. 1980

● SE

Add your address in the RETURN TO space on reverse.

(CONSULT POSTMASTER FOR FEES)

1. The following service is requested (check one).

☒ Show to whom and date delivered \$

☐ Show to whom, date, and address of delivery \$

2. ☐ **RESTRICTED DELIVERY**
(The restricted delivery fee is charged in addition to the return receipt fee.) \$

TOTAL \$

3. ARTICLE ADDRESSED TO:
Jacanna Apache
P.O. Box 507
Del Rio, N.M. 87528

4. TYPE OF SERVICE: ☐ REGISTERED ☐ INSURED ☒ CERTIFIED ☐ COD ☐ EXPRESS MAIL

ARTICLE NUMBER
P495-058-967

(Always obtain signature of addressee or agent)

I have received the article described above.

SIGNATURE ☐ Addressee ☐ Authorized agent
Mary A. [Signature]

5. DATE OF DELIVERY
6/2/83

6. ADDRESSEE'S ADDRESS (Only if requested)

7. UNABLE TO DELIVER BECAUSE:

7a. EMPLOYEE'S INITIALS
W

POSTMARK
1983

PS Form 3811, Dec. 1980

● SE

Add your address in the RETURN TO space on reverse.

(CONSULT POSTMASTER FOR FEES)

1. The following service is requested (check one).

☐ Show to whom and date delivered \$

☐ Show to whom, date, and address of delivery \$

2. ☐ **RESTRICTED DELIVERY**
(The restricted delivery fee is charged in addition to the return receipt fee.) \$

TOTAL \$

3. ARTICLE ADDRESSED TO:
PETROLEUM Exchange
717 N. Harwood Suite 800
DALLAS TEXAS 75201

4. TYPE OF SERVICE: ☐ REGISTERED ☐ INSURED ☐ CERTIFIED ☐ COD ☐ EXPRESS MAIL

ARTICLE NUMBER
P495-058-971

(Always obtain signature of addressee or agent)

I have received the article described above.

SIGNATURE ☐ Addressee ☐ Authorized agent
Robin [Signature]

5. DATE OF DELIVERY

6. ADDRESSEE'S ADDRESS (Only if requested)

7. UNABLE TO DELIVER BECAUSE:

7a. EMPLOYEE'S INITIALS

POSTMARK
1983

RETURN RECEIPT, REGISTERED, INSURED AND CERTIFIED MAIL

PS Form 3811, Dec. 1980

(CONSULT POSTMASTER FOR FEES)

1. The following service is requested (check one).

☐ Show to whom and date delivered \$

☐ Show to whom, date, and address of delivery \$

2. ☐ **RESTRICTED DELIVERY**
(The restricted delivery fee is charged in addition to the return receipt fee.) \$

TOTAL \$

3. ARTICLE ADDRESSED TO:
Geo Coleman
P.O. Box Drav 3337
Ang. 7m. 87401

4. TYPE OF SERVICE: ☐ REGISTERED ☐ INSURED ☐ CERTIFIED ☐ COD ☐ EXPRESS MAIL

ARTICLE NUMBER
P495-058-972

(Always obtain signature of addressee or agent)

I have received the article described above.

SIGNATURE ☐ Addressee ☐ Authorized agent
[Signature]

5. DATE OF DELIVERY

6. ADDRESSEE'S ADDRESS (Only if requested)

7. UNABLE TO DELIVER BECAUSE:

7a. EMPLOYEE'S INITIALS

POSTMARK

LOBO PRODUCTION
R.E. Lauritsen & Gary Roberts
P.O. BOX 2364
FARMINGTON, NEW MEXICO 87401
TELEPHONE: (505) 327-0331

*Letter 5/24/83
Return to R.E. Lauritsen
Doris Simons*

May 23, 1983

Re: #1 Gulf-State-36
Sec. 36, T23N, R6W
850' FNL, 800" FEL
Sandoval County,
New Mexico

Jicarilla Apache
Oil and Gas Division
P.O. Box 507
Dulse, NM 87528

An application is being prepared to obtain permission to commingle production from the lower Gallup formation and from a sand in the Menefee formation (Mesa Verde) in the Lobo Production, #1 Gulf-State-36. The well is located 850' FNL, 800' FEL, Section 36, T23N, R6W, Sandoval County, New Mexico.

If you have any objections or comments regarding the commingling, please contact the New Mexico Oil Conservation Division as follows:

Mr. Joe D. Ramy, Director
P.O. Box 2088
Santa Fe, New Mexico 87501

Thank you for your cooperation.

Sincerely,

R.E. Lauritsen

R.E. Lauritsen

*Letter 5/24/83
R.E. Lauritsen*

LOBO PRODUCTION
R.E. Lauritsen & Gary Roberts
P.O. BOX 2364
FARMINGTON, NEW MEXICO 87401
TELEPHONE: (505) 327-0331

May 23, 1983

Re: #1 Gulf-State-36
Sec. 36, T23N, R6W
850' FNL, 800" FEL
Sandoval County,
New Mexico

Gulf Oil Exploration
P.O. Box 2100
Houston, Texas 77252

An application is being prepared to obtain permission to commingle production from the lower Gallup formation and from a sand in the Menefee formation (Mesa Verde) in the Lobo Production, #1 Gulf-State-36. The well is located 850' FNL, 800' FEL, Section 36, T23N, R6W, Sandoval County, New Mexico.

If you have any objections or comments regarding the commingling, please contact the New Mexico Oil Conservation Division as follows:

Mr. Joe D. Ramy, Director
P.O. Box 2088
Santa Fe, New Mexico 87501

Thank you for your cooperation.

Sincerely,

R.E. Lauritsen
R.E. Lauritsen

LOBO PRODUCTION
R.E. Lauritsen & Gary Roberts
P.O. BOX 2364
FARMINGTON, NEW MEXICO 87401
TELEPHONE: (505) 327-0331

*Letter 5/24/83
return to sender*

May 23, 1983

Re: #1 Gulf-State-36
Sec. 36, T23N, R6W
850' FNL, 800' FEL
Sandoval County,
New Mexico

George Coleman
P.O. Box Drawer 3337
Farmington, NM 87499

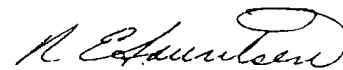
An application is being prepared to obtain permission to commingle production from the lower Gallup formation and from a sand in the Menefee formation (Mesa Verde) in the Lobo Production, #1 Gulf-State-36. The well is located 850' FNL, 800' FEL, Section 36, T23N, R6W, Sandoval County, New Mexico.

If you have any objections or comments regarding the commingling, please contact the New Mexico Oil Conservation Division as follows:

Mr. Joe D. Ramy, Director
P.O. Box 2088
Santa Fe, New Mexico 87501

Thank you for your cooperation.

Sincerely,



R.E. Lauritsen

*Letter 5/24/83
re: Lobo Production*

LOBO PRODUCTION
R.E. Lauritsen & Gary Roberts
P.O. BOX 2364
FARMINGTON, NEW MEXICO 87401
TELEPHONE: (505) 327-0331

May 23, 1983

Re: #1 Gulf-State-36
Sec. 36, T23N, R6W
850' FNL, 800" FEL
Sandoval County,
New Mexico

Abby Corporation
P.O. Box 1629
Grand Junction Colo 81502

An application is being prepared to obtain permission to commingle production from the lower Gallup formation and from a sand in the Menefee formation (Mesa Verde) in the Lobo Production, #1 Gulf-State-36. The well is located 850' FNL, 800' FEL, Section 36, T23N, R6W, Sandoval County, New Mexico.

If you have any objections or comments regarding the commingling, please contact the New Mexico Oil Conservation Division as follows:

Mr. Joe D. Ramy, Director
P.O. Box 2088
Santa Fe, New Mexico 87501

Thank you for your cooperation.

Sincerely,



R.E. Lauritsen

LOBO PRODUCTION
R.E. Lauritsen & Gary Roberts
P.O. BOX 2364
FARMINGTON, NEW MEXICO 87401
TELEPHONE: (505) 327-0331

Letter 5/24/83
Return to R.E. Lauritsen
RECEIVED

JUN 8 1983

OIL CON. DIV.

DIST. 3

May 23, 1983

Re: #1 Gulf-State-36
Sec. 36, T23N, R6W
850' FNL, 800" FEL
Sandoval County,
New Mexico

Dretrick Exploration
410 17th St.
Suite 2450
Denver, Colo 80202

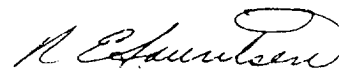
An application is being prepared to obtain permission to commingle production from the lower Gallup formation and from a sand in the Menefee formation (Mesa Verde) in the Lobo Production, #1 Gulf-State-36. The well is located 850' FNL, 800' FEL, Section 36, T23N, R6W, Sandoval County, New Mexico.

If you have any objections or comments regarding the commingling, please contact the New Mexico Oil Conservation Division as follows:

Mr. Joe D. Ramy, Director
P.O. Box 2088
Santa Fe, New Mexico 87501

Thank you for your cooperation.

Sincerely,



R.E. Lauritsen

LOBO PRODUCTION
R.E. Lauritsen & Gary Roberts
P.O. BOX 2364
FARMINGTON, NEW MEXICO 87401
TELEPHONE: (505) 327-0331

*Letter 5/24/83
R.E. Lauritsen*

May 23, 1983

El Paso Exploration Co.
P.O. Box 1492
El Paso Texas 79978

Re: #1 Gulf-State-36
Sec. 36, T23N, R6W
850' FNL, 800' FEL
Sandoval County,
New Mexico

An application is being prepared to obtain permission to commingle production from the lower Gallup formation and from a sand in the Menefee formation (Mesa Verde) in the Lobo Production, #1 Gulf-State-36. The well is located 850' FNL, 800' FEL, Section 36, T23N, R6W, Sandoval County, New Mexico.

If you have any objections or comments regarding the commingling, please contact the New Mexico Oil Conservation Division as follows:

Mr. Joe D. Ramo, Director
P.O. Box 2088
Santa Fe, New Mexico 87501

Thank you for your cooperation.

Sincerely,

R.E. Lauritsen

R.E. Lauritsen