

UNITED STATES
DEPARTMENT OF THE INTERIOR
GEOLOGICAL SURVEY

APPLICATION FOR PERMIT TO DRILL, DEEPEN, OR PLUG BACK

1a. TYPE OF WORK
DRILL ☒ DEEPEN ☐ PLUG BACK ☐

b. TYPE OF WELL
OIL WELL ☒ GAS WELL ☐ OTHER ☐ SINGLE ZONE ☒ MULTIPLE ZONE ☐

2. NAME OF OPERATOR
Aztec Energy Corporation

3. ADDRESS OF OPERATOR
1206 East 20th Street, Farmington, N. M. 87401

4. LOCATION OF WELL (Report location clearly and in accordance with any State requirements.)*
At surface 660' FSL 2090' FWL
At proposed prod. zone 660' FSL 2090' FWL

14. DISTANCE IN MILES AND DIRECTION FROM NEAREST TOWN OR POST OFFICE*
2-1/2 miles Southwest of Counselors, New Mexico

15. DISTANCE FROM PROPOSED* LOCATION TO NEAREST PROPERTY OR LEASE LINE, FT. (Also to nearest drlg. unit line, if any) 660'

16. NO. OF ACRES IN LEASE 430 200

17. NO. OF ACRES ASSIGNED TO THIS WELL 40

18. DISTANCE FROM PROPOSED LOCATION* TO NEAREST WELL, DRILLING, COMPLETED, OR APPLIED FOR, ON THIS LEASE, FT. 1930

19. PROPOSED DEPTH 5800

20. ROTARY OR CABLE TOOLS Rotary

21. ELEVATIONS (Show whether DF, RT, GR) 7255 GR

22. APPROX. DATE WORK WILL START* May 1983

23. "GENERAL REQUIREMENTS" PROPOSED CASING AND CEMENTING PROGRAM

5. LEASE DESIGNATION AND SERIAL NO.
NM 28

6. IF INDICATED, STATE OF LEASE

7. UNIT AGREEMENT NAME

8. FARM OR LEASE NAME
Lu Lu

9. WELL NO.
3

10. FIELD AND POOL, OR WILDCAT
Lybrook Gallup Ext.

11. SEC., T., R., M., OR BLK. AND SURVEY OR AREA
Sec. 29, T.23N, R.6W

12. COUNTY OR PARISH
Sandoval

13. STATE
N.M.

30-043-20675
RECEIVED
APR 29 1983
OIL CON. DIV.
DIST. 3

SIZE OF HOLE	SIZE OF CASING	WEIGHT PER FOOT	SETTING DEPTH	QUANTITY OF CEMENT
12-1/4"	8-5/8"	24.0#	250	200 Sk Class B w/2% KCL
7-7/8"	5-1/2"	14.0#, 15.5#	5800	950 Sk Class B

1. Drill 12-1/4" hole with rotary tools to approximately 250 feet and run new 8-5/8" 24.0#/ft casing. Cement casing with approximately 200 SK Class B cement, circulating to the surface.
2. Install BOP and test casing and BOP to 1000 PSIG.
3. Drill 7-7/8" to approximately 5800' with fresh water gel mud.
4. Log well.
5. Run and set 5-1/2" casing and cement in two stages, cement to cover Ojo Alamo.
6. Perforate and stimulate Gallup Formation. Clean up well and complete as required.

IN ABOVE SPACE DESCRIBE PROPOSED PROGRAM: If proposal is to deepen or plug back, give data on present productive zone and proposed new productive zone. If proposal is to drill or deepen directionally, give pertinent data on subsurface locations and measured and true vertical depths. Give blowout preventer program, if any.

24. SIGNED Ronnie W. Allen TITLE Geologist DATE March 22, 1983
(This space for Federal or State office use)

PERMIT NO. _____ APPROVAL DATE _____

APPROVED BY _____ TITLE _____

CONDITIONS OF APPROVAL, IF ANY: _____

APPROVED
AS AMENDED
DATE APR 28 1983
James F. Sims
DISTRICT ENGINEER
Acting Area Manager

NM000

All distances must be from the outer boundaries of the Section.

Operator AZTEC ENERGY CORPORATION			Lease Lu Lu		Well No. 3
Unit Letter N	Section 29	Township 23 NORTH	Range 6 WEST	County SANDOVAL COUNTY	
Actual Footage Location of Well: 660 feet from the SOUTH line and 2090 feet from the WEST line					
Ground Level Elev. 7255	Producing Formation Gallup	Pool Lybrook Gallup Ext.		Dedicated Acreage: 40 Acres	

1. Outline the acreage dedicated to the subject well by colored pencil or hatchure marks on the plat below.
2. If more than one lease is dedicated to the well, outline each and identify the ownership thereof (both as to working interest and royalty).
3. If more than one lease of different ownership is dedicated to the well, have the interests of all owners been consolidated by communitization, unitization, force-pooling, etc?

☐ Yes ☐ No If answer is "yes," type of consolidation _____

If answer is "no," list the owners and tract descriptions which have actually been consolidated. (Use reverse side of this form if necessary.) _____

No allowable will be assigned to the well until all interests have been consolidated (by communitization, unitization, forced-pooling, or otherwise) or until a non-standard unit, eliminating such interests, has been approved by the Division

RECEIVED
APR 29 1983
OIL CON. DIV.
DIST. 3

U.S. GEOLOGICAL SURVEY
M.

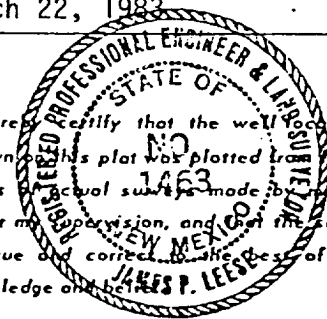
CERTIFICATION

I hereby certify that the information contained herein is true and complete to the best of my knowledge and belief.

Ronnie W. Allen

Name
Ronnie W. Allen
Position
Geologist
Company
Aztec Energy Corporation
Date
March 22, 1983

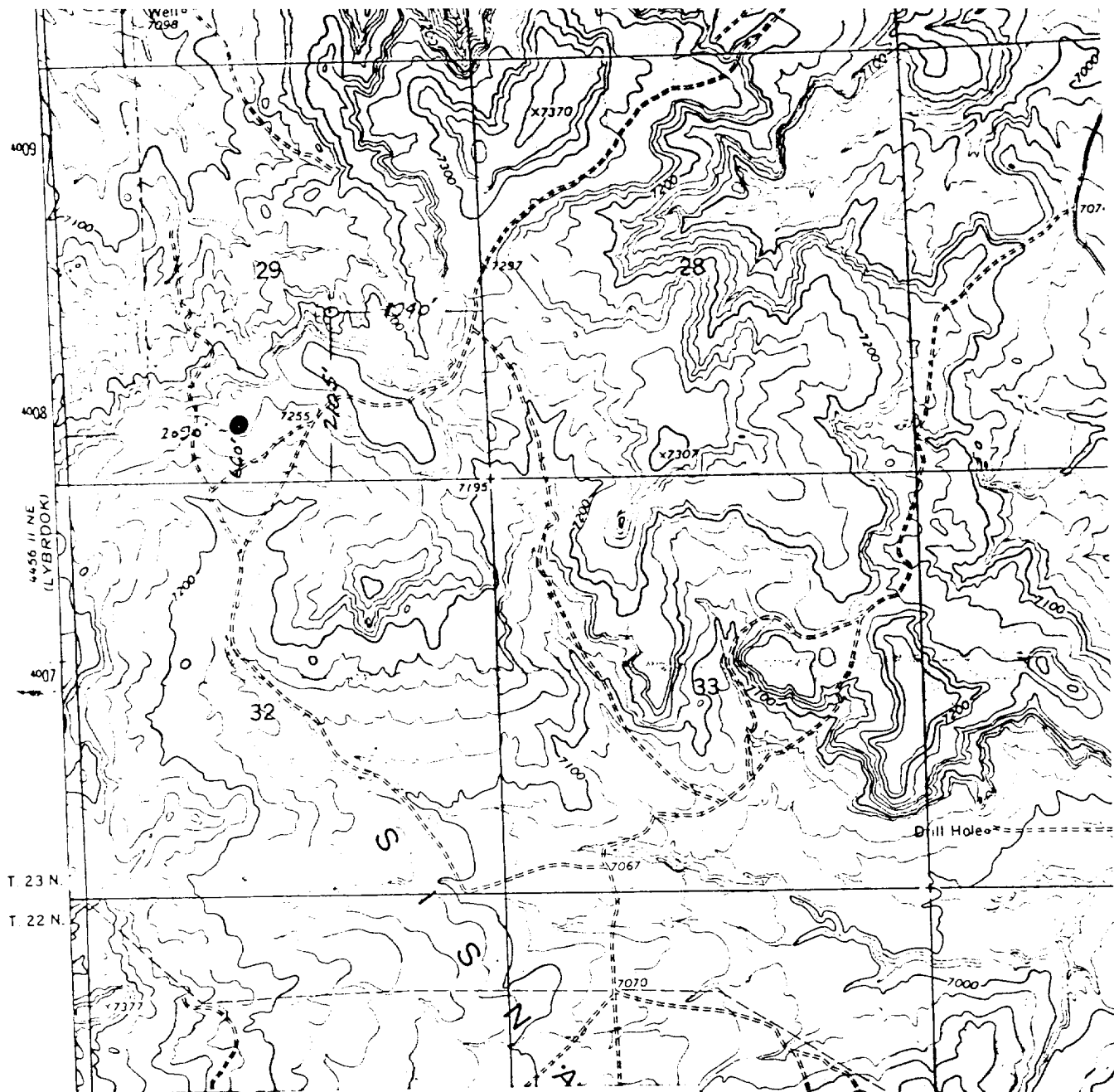
I hereby certify that the well location shown on this plat was plotted from field notes of actual surveys made by me or under my supervision, and that the same is true and correct to the best of my knowledge and belief.



Date Surveyed
March 14, 1983
Registered Professional Engineer and/or Land Surveyor
James P. Leese
James P. Leese
Certificate No.
1463

2090'
660'

0 330 660 990 1320 1650 1980 2310 2640 2970 3300 3630 3960 4290 4620 4950 5280 5610 5940 6270 6600



AZTEC ENERGY CORPORATION
 SE $\frac{1}{4}$ SW $\frac{1}{4}$, Sec. 29, T23N, R6W, N.M.P.M.,
 Sandoval County, New Mexico

