

UNITED STATES  
DEPARTMENT OF THE INTERIOR  
GEOLOGICAL SURVEY

## APPLICATION FOR PERMIT TO DRILL, DEEPEN, OR PLUG BACK

## 1a. TYPE OF WORK

DRILL ☒DEEPEN ☐PLUG BACK ☐

## b. TYPE OF WELL

OIL  
WELL ☐GAS  
WELL ☐

OTHER

Injection well

SINGLE  
ZONE ☒MULTIPLE  
ZONE ☐

## 2. NAME OF OPERATOR

Noel Reynolds

## 3. ADDRESS OF OPERATOR

c/o A. R. Kendrick, Box 516, Aztec, New Mexico 87410

## 4. LOCATION OF WELL (Report location clearly and in accordance with any State requirements.)

At surface

750' FNL 430' FEL Sec. 33

At proposed prod. zone

same

## 14. DISTANCE IN MILES AND DIRECTION FROM NEAREST TOWN OR POST OFFICE\*

21 airline miles southwest from Cuba, New Mexico

## 15. DISTANCE FROM PROPOSED\*

LOCATION TO NEAREST  
PROPERTY OR LEASE LINE, FT.  
(Also to nearest drlg. unit line, if any)

430'

## 18. DISTANCE FROM PROPOSED LOCATION\*

TO NEAREST WELL, DRILLING, COMPLETED,  
OR APPLIED FOR, ON THIS LEASE, FT.

211'

## 16. NO. OF ACRES IN LEASE

520

## 19. PROPOSED DEPTH

430'

## 17. NO. OF ACRES ASSIGNED

40 joint

## 20. ROTARY OR CABLE TOOLS

Rotary

## 21. ELEVATIONS (Show whether DF, RT, GR, etc.)

6511' GR

## 23.

## DRILLING OPERATIONS AUTHORIZED ARE

SUBJECT TO COMPLIANCE WITH ATTACHED

## PROPOSED CASING AND CEMENTING PROGRAM

SIZE OF HOLE	SIZE OF CASING	WEIGHT PER FOOT	SETTING DEPTH	QUANTITY OF CEMENT
8.75"	7.0"	23.0# 7-55	35'	8ssx, 9 cu ft. to surface
6.25"	4.5"	10.5# 7-55	330'	43ssx, 51 cu ft. to surface

Drilling contractor to furnish 6½" Regan, bladder type, 3000 psi BOP

Well is to be drilled using air as circulating fluid.

Gas is not dedicated.

IN ABOVE SPACE DESCRIBE PROPOSED PROGRAM: If proposal is to deepen or plug back, give data on present productive zone and proposed new productive zone. If proposal is to drill or deepen directionally, give pertinent data on subsurface locations and measured and true vertical depths. Give blowout preventer program, if any.

## 24.

SIGNED

*AR Kendrick*

TITLE Agent

DATE June 20, 1983

(This space for Federal or State office use)

PERMIT NO.

APPROVAL DATE

APPROVED BY

TITLE

CONDITIONS OF APPROVAL, IF ANY:

APPROVED  
AS AMENDED

DATE

JUN 22 1983

JAMES F. SIMS

DISTRICT ENGINEER

30-043-20677

## 5. LEASE DESIGNATION AND SERIAL NO.

SF 081171-K

## 6. IF INDIAN, ALLOTTEE OR TRIBE NAME

## 7. UNIT AGREEMENT NAME

## 8. FARM OR LEASE NAME

Ann Injection

## 9. WELL NO.

## 10. FIELD AND POOL, OR WILDCAT

San Luis-Mesa Verde Oil

## 11. SEC. T. R. M. OR BLK.

Sec. 33, T18N, R3W

## 12. COUNTY OR PARISH

Sandoval New Mexico

## 13. STATE

New Mexico

## 14. DISTANCE IN MILES AND DIRECTION FROM NEAREST TOWN OR POST OFFICE\*

21 airline miles southwest from Cuba, New Mexico

## 15. DISTANCE FROM PROPOSED\*

LOCATION TO NEAREST PROPERTY OR LEASE LINE, FT.

(Also to nearest drlg. unit line, if any)

430'

## 18. DISTANCE FROM PROPOSED LOCATION\*

TO NEAREST WELL, DRILLING, COMPLETED, OR APPLIED FOR, ON THIS LEASE, FT.

211'

## 16. NO. OF ACRES IN LEASE

520

## 19. PROPOSED DEPTH

430'

## 17. NO. OF ACRES ASSIGNED

40 joint

## 20. ROTARY OR CABLE TOOLS

Rotary

## 21. ELEVATIONS (Show whether DF, RT, GR, etc.)

6511' GR

## 23.

## DRILLING OPERATIONS AUTHORIZED ARE

SUBJECT TO COMPLIANCE WITH ATTACHED

## PROPOSED CASING AND CEMENTING PROGRAM

QUANTITY OF CEMENT

8ssx, 9 cu ft. to surface

43ssx, 51 cu ft. to surface

RECEIVED

JUN 22 1983

OIL CON. DIV.

DIST. 3

JUN 22 1983

JAMES F. SIMS

DISTRICT ENGINEER

DISTRICT ENGINEER

DISTRICT ENGINEER

DISTRICT ENGINEER

DISTRICT ENGINEER

DISTRICT ENGINEER

DISTRICT ENGINEER

DISTRICT ENGINEER

DISTRICT ENGINEER

DISTRICT ENGINEER

DISTRICT ENGINEER

DISTRICT ENGINEER

DISTRICT ENGINEER

DISTRICT ENGINEER

DISTRICT ENGINEER

DISTRICT ENGINEER

DISTRICT ENGINEER

DISTRICT ENGINEER

All distances must be from the outer boundaries of the Section.

Operator <b>Noel Reynolds</b>		Lease <b>Ann Injection</b>		Well No. <b>1</b>
Unit Letter <b>A</b>	Section <b>33</b>	Township <b>18N</b>	Range <b>3W</b>	County <b>Sandoval</b>
Actual Footage Location of Well: <b>750</b> feet from the <b>North</b> line and <b>430</b> feet from the <b>East</b> line				
Ground Level Elev. <b>6511</b>	Producing Formation <b>Mesaverde</b>	Pool <b>South San Luis-Mesaverde Oil</b>	Dedicated Acreage: <b>40</b> Acres	

1. Outline the acreage dedicated to the subject well by colored pencil or hachure marks on the plat below.
2. If more than one lease is dedicated to the well, outline each and identify the ownership thereof (both as to working interest and royalty).
3. If more than one lease of different ownership is dedicated to the well, have the interests of all owners been consolidated by communitization, unitization, force-pooling, etc?

☐ Yes ☐ No If answer is "yes," type of consolidation \_\_\_\_\_

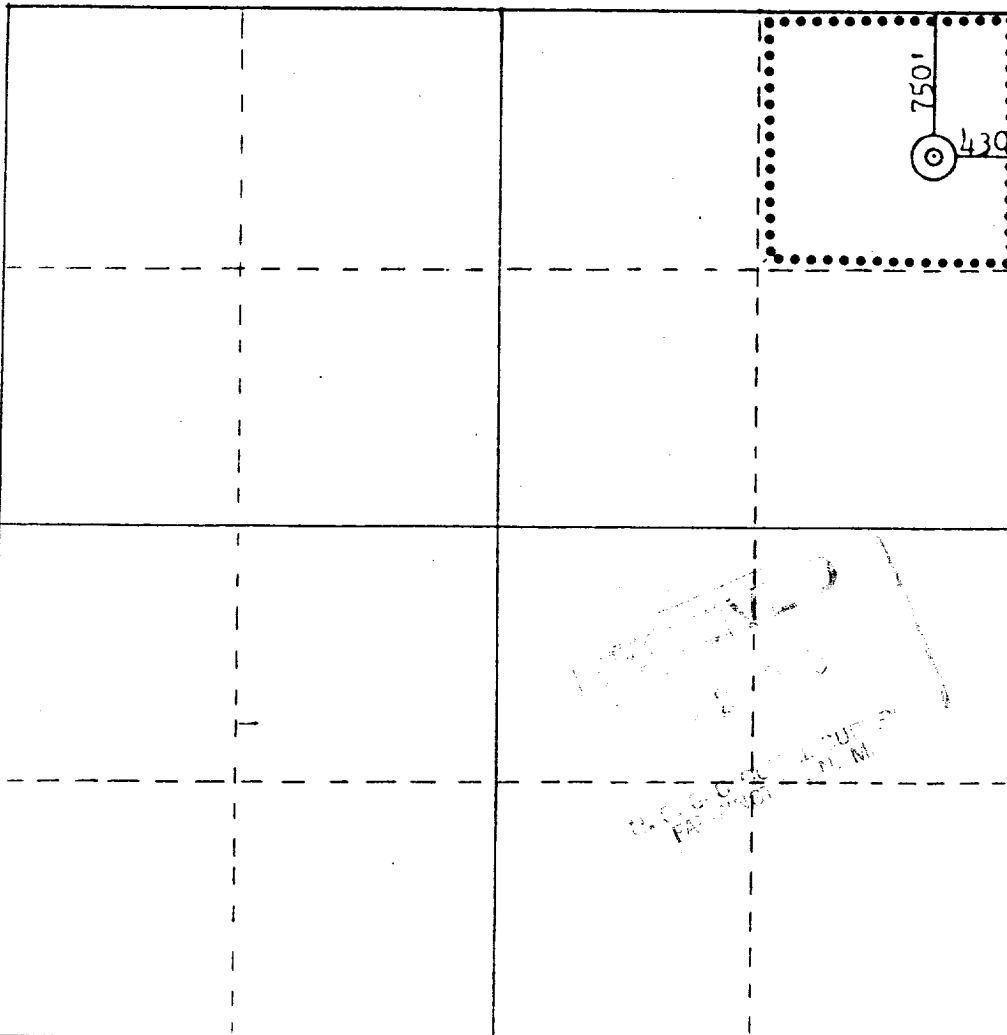
RECEIVED

JUN 29 1983

OIL CON. DIV.

If answer is "no," list the owners and tract descriptions which have actually been consolidated. (Use reverse side of this form if necessary.) \_\_\_\_\_

No allowable will be assigned to the well until all interests have been consolidated (by communitization, unitization, forced-pooling, or otherwise) or until a non-standard unit, eliminating such interests, has been approved by the Commission.



Scale: 1"=1000'

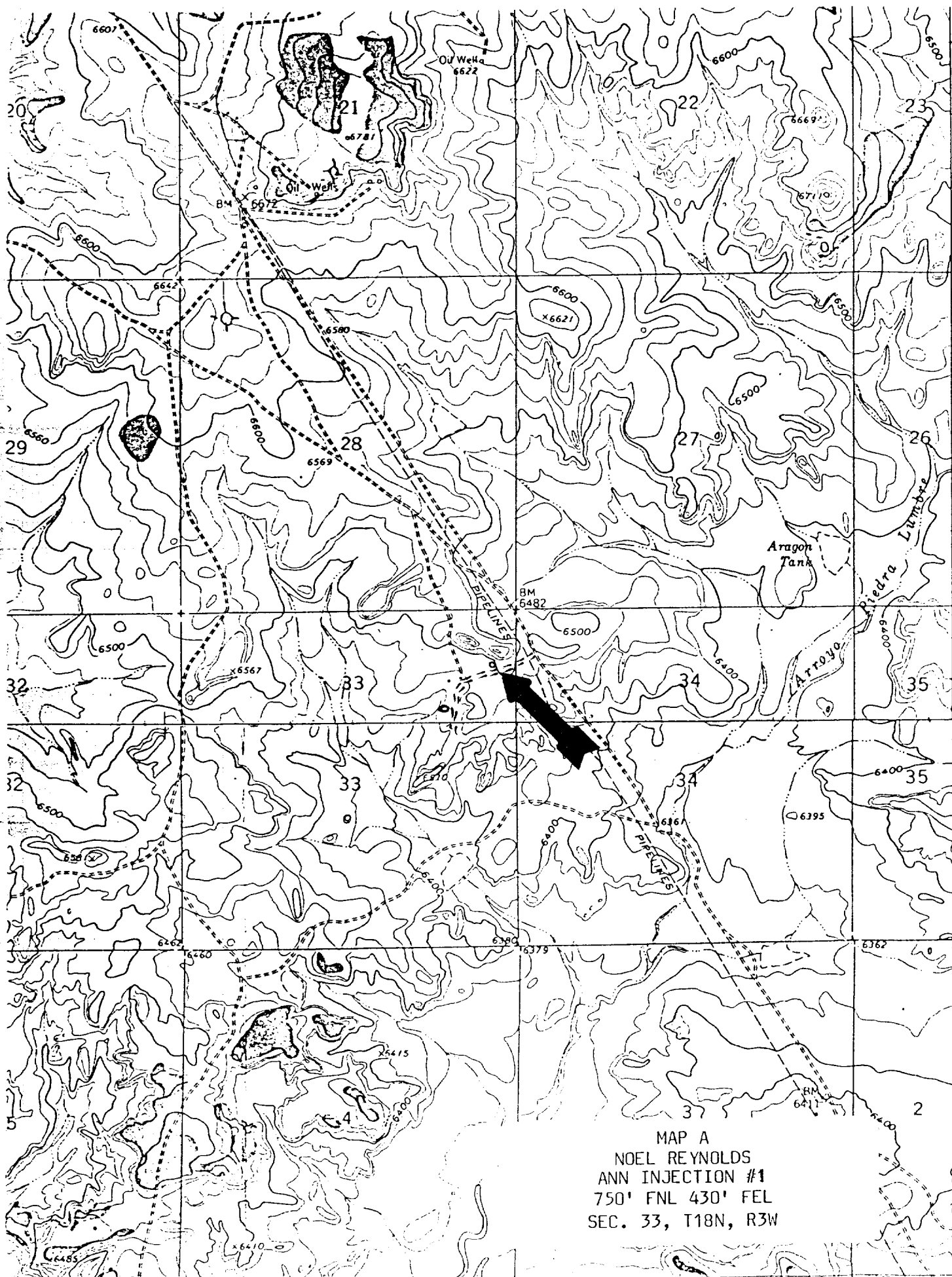
CERTIFICATION

I hereby certify that the information contained herein is true and complete to the best of my knowledge and belief.

Name  
*AR Kendrick*  
Position  
Agent  
Company  
**Noel Reynolds**  
Date  
**June 10, 1983**

I hereby certify that the well location shown on this plat was plotted from field notes of actual surveys made by me or under my supervision, and that the same is true and correct to the best of my knowledge and belief.

Date Surveyed  
**June 8, 1983**  
Registered Professional Engineer and Land Surveyor  
*Fred B. Kern Jr.*  
**Fred B. Kern Jr.**  
Certificate No. **3950**



MAP A  
NOEL REYNOLDS  
ANN INJECTION #1  
750' FNL 430' FEL  
SEC. 33, T18N, R3W

TENNECO  
6 - Torreón Core Test

Q

EL PAM  
Myro

4  
TD 520

A. H. STOWE  
Timmy Fed

3  
J. HARVEY  
TD 920 TD 600

1  
TD 560

2  
TD 520

STOWE  
Fed - 1

TD 1010

Ann - 14  
TD 3382

EL PAM  
i- Demos

TD 550

RUTH ROSS  
2 - So. Son Luis

TD 400

TENNECO  
7 - Torreón C. T.

TD 1150

MAP B  
NOEL REYNOLDS  
ANN INJECTION #1  
750' FNL 430' FEL  
SEC. 33, T18N, R3W

Indicated  
stream channel  
boundaries

Hughes Collins

TD 1800

Ann - 13

TD 500

Della - 8

TD 450

Fed - 9

TD 400

Della - 16

TD 450

Fed - 2

TD 820

Ann - 11

TD 550

Ann - 15

TD 430

Ann - 10

TD 350

Ann - 17

TD 360

Ann - 1

TD 1010

Ann - 2

TD 550

Ann - 6

TD 450

Ann - 12

TD 430

Ann - 18

TD 605

Ann - 19

TD 450

Ann - 20

TD 450

Ann - 21

TD 450

Ann - 22

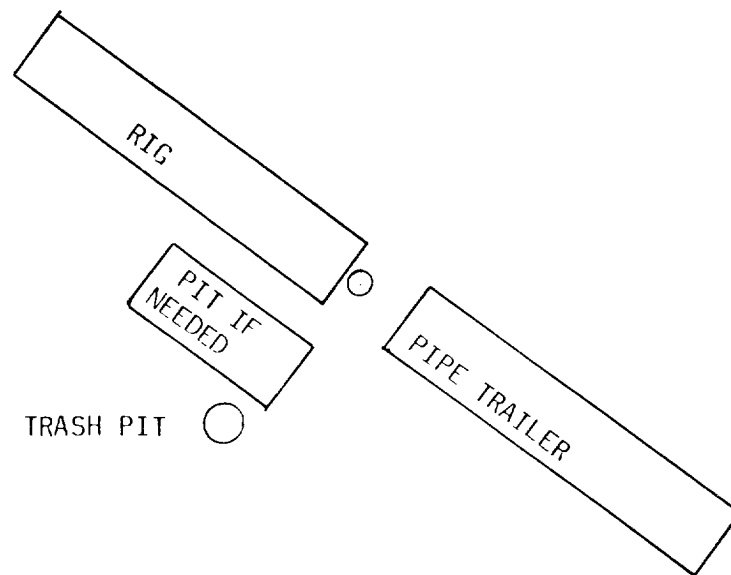
TD 450

Ann - 23

TD 450

Ann - 24

TD 450



LOCATION LAYOUT  
NOEL REYNOLDS  
ANN INJECTION #1  
750' FNL 430' FEL  
SEC. 33, T18N, R3W